

A. 278.a

MELODIÆ

⚡

PRUDENTIANÆ ET IN VIRGI-
LIVM MAGNA EX PARTE NV-

per natæ, & per Nicolaum

Fabrum typographum

expressæ.

LIPSIAE.

M. D. XXXIII.

Mense Aprili.


*Quicquid est uirtutis usquam, psallat in laudem Dei,
Nulla linguarum filescat, uox & omnis consonet.*

Ad Prudentiam

et Virgilium

expressæ

CATALOGVS HYMNORVM.

- Præfatio.** Per quinquennia. Choriambicum triplex.
Ad Galli cantum. Ales dici. Iambicum quaternarium.
Ad Matutinum. Nox & tenebræ. Eiusdem generis.
Oda ante cibum. O crucifer bone. Alemanicum Dactylis-
 cum, bis.
Post cibum. Passis uisceribus. Phalæcium.
Sub accensionem lucernarum. Inuentor rutili. Asclepias-
 dum, bis.
Ante somnum. Ades pater . Iamb. dimetrum sed
 catalecticum.
Ieiunantium. O Nazarene. Iambicum senarium.
Post ieiunium. Christe seruatorum. Sapphicū unā cum Adonico.
Omni hora. Da puer plectrum. Trochaicum tetrametrum.
In exequijs defunctorum. Deus ignee fons. Anapæsticum
 Partheniacum.
Oftauo Kal. Ianu. Quid est quod arctum. Iambicus dimeter.
Epiphaniæ. Quicumq; Christum queritis. Eiusdem rationis.
Agon. beati Laurentij. Antiqua sanorū. Eiusdē sicut et sequēs.
Martyrium beati Vincenij. Beate Martyr prospera.
Præfatio in Enchiridion. Pius fidelis. Iamb. trimetrum sed
 Catalecticum alternis cū Trochaico dimetro catalectico.
Deinde Sedulij. A solis ortus cardine. quaternariū Iambicū.
HEROICA septem uersuum ad usum Vergilij.
Heroicæ uersibus duobus.
Postremum est hymnus uestertinus. Immenſe cœli conditor,
 ex hymnario ecclesiastico, uersu Iambico & dimetro.

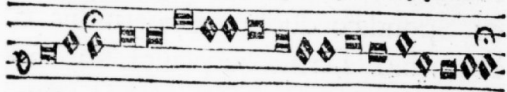
O D E est tricolos tristrophos.
 Sunt enim in singulis ambitibus uersus
 tres, totidem generum. Primus Glyco-
 nius, ex Spondaeo Choriambo & Pyr-
 richio constat. Secundus Asclepiadæus,
 ex Spondaeo duobus Choriambis &
 Pyrrichio. Tertius qui plane Choriamb-
 icus dicitur, ex Spondaeo tribus Cho-
 riambis & Pyrrichio, sic.

-- -vv- vv
 -- -vv- -vv- vv
 -- -vv- -vv- -vv- vv

DISCANTVS.

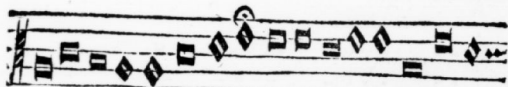


Per quinquennia iā decem Ni fallor, fuimus, septimus



in super Annum cardo rotat, dum fruimur sole uolubili.

TENOR.



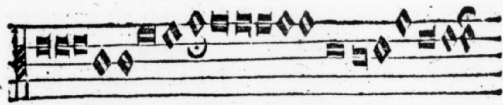
Per quinquennia iam decem Ni fallor, fuimus, septi-



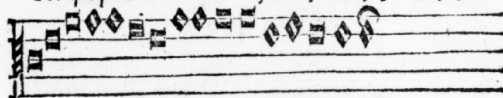
mus in super Annum cardo rotat, dum fruimur sole uolubili.

19 JY 62

ALTVS.



Per quinquennia iā decē Ni fallor, fuim⁹, septim⁹ in super

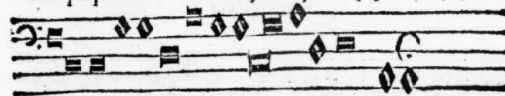


Annum cardo rotat, dū fruimur sole uolubili.

BASSVS.



Per quinquennia iā decē Ni fallor, fuim⁹, septim⁹ in super



Annum cardo rotat, dum fruimur sole uolubili.

Per Lucam Hordifch.

HYMNVS AD GALLICANTVM.

ODE Monocolos metrum Iambicum, Dimetrum, Archilo-
chium, acatalecticum, locis imparibus Spondeam, &
nonnunquam Anapestum, sed raro dactylum aut tribrachyn:
paribus vero recipit Iambum, aut pro hoc aliquando Pyrrhi-
chium & interdum tribrachyn, in hunc serè modum.

DISCANTVS.



Ales di e i nunci- us, Lucē propinquā præcirit,

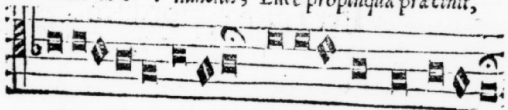


Nos excitator mentium Iam Christus ad uitam uocat.

TENOR.



Ales di e i nunci- us, Lucē propinquā præcirit,

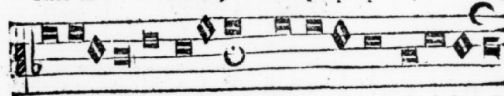


Nos excitator mentium Iam Christus ad uitam uocat.

ALTVS.

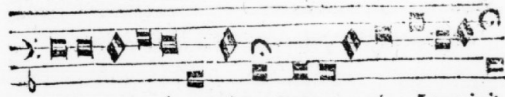


Ales di e i nunci- us, Lucem propinquam præcirit.

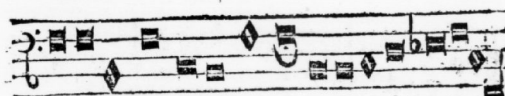


Nos excitator mentium Iam Christus ad uitam uocat.

BASSVS.



Ales di e i nunci- us, Lucem propinquā præcirit,



Nos exci ta tor men ti um Iā Christus ad uitā uocat.

Per Sebast. Forster.

HYMNVS AD MATVTINVM.

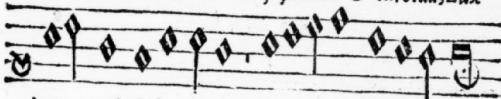
Eadem est huius ratio, quae superioris.

-- v -- v --

DISCANTVS.



Nox et tenebrae et nubila, Confusa mundi & turbida, Lux

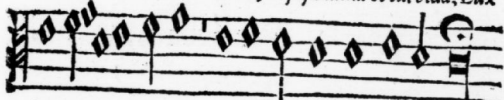


intrat, albescit polus, Christus uenit discedite.

TENOR.

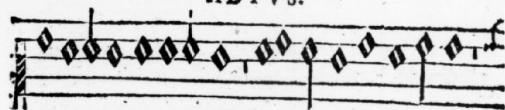


Nox & tenebrae & nubila, Confusa mundi et turbida, Lux

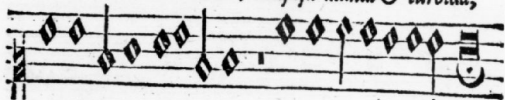


intrat, albescit polus, Christus uenit, discedite.

ALTVS.



Nox et tenebrae et nubila, Confusa mundi & turbida,

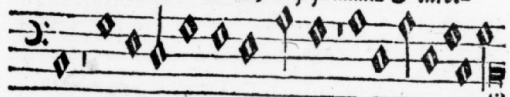


Lux intrat, albescit polus, Christus uenit, discedite.

BASSVS.



Nox & tenebrae & nubila, Confusa mundi & turbi-



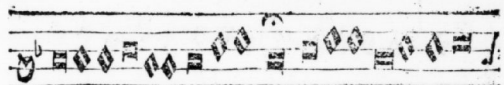
da, Lux intrat, albescit polus, Christus uenit, discedite.

HYMNVS ANTE CIBVM,

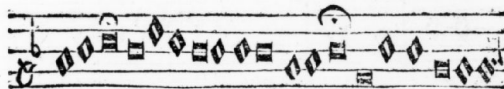
ODE Monocolos metrum Alemanicum, Dactylicum trimetrum, hypercatalecticum, pentastrophon, Constans tribus dactylis & semipede, hoc est heptimemeri heroica, hoc modo.

--vv --vv --vv v

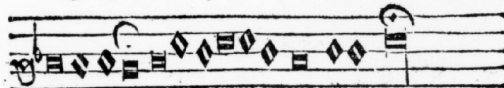
DISCANTVS.



O Crucifer bone luci fa tor, Omniparens pie uer-



bigena, Aedite corpore uirgineo, Sed prius in geni-

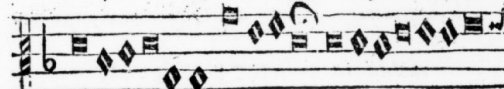


tore potens, Astra, solum, mare quam fierent.

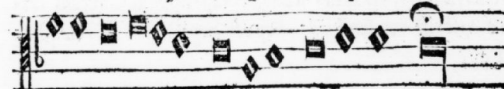
TENOR.



O Crucifer bone lucifator, Omniparens pie uerbigena,

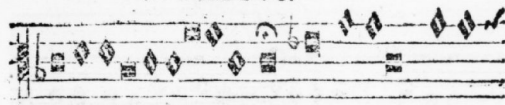


Aedite corpore uirgineo, Sed prius in genito-



re potens, Astra, solum, mare quam fi e rent.

ALTVS.



O Crucifer bone lucifator, Omniparens pi e

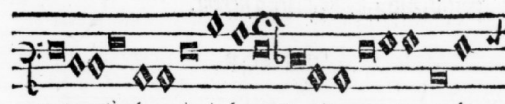


uerbi gena, Aedi te corpore uir gine o, Sed pria

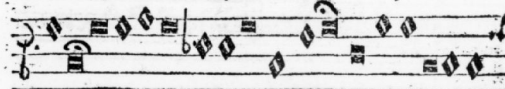


us in genitore potens, Astra, solum, mare q̄ fierent.

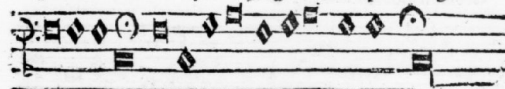
BASSVS.



O Crucifer bone luci fator, Omniparens pie uerbi-



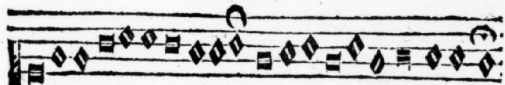
gena, Aedite corpore uir gi neo, Sed prius in geni-



tore potens, Astra, solum, mare quam fi e rent.

Aliud Melos inter æquales.

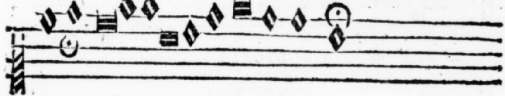
DIS.



O Crucifer bone lucifator, Omniparens pie uerbigena,
Germine nobilis Eulalia. In Peristepharo est hymnus.

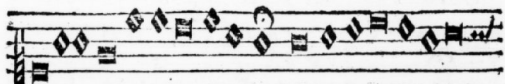


Aedite corpore uir gi ne o, Sed prius in geni to re

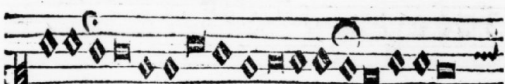


potens, Astra, solum, mare q̄ fierent.

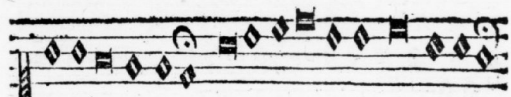
TENOR.



O Crucifer bone luci sa tor, Omniparens pie uer=
Germine nobilis Eulalia &c.



bi gena, Aedite corpore uirgi ne o, Sed prius in



ge ni to re potens, Astra, solum, mare quàm fierent.

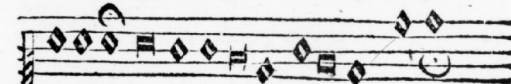
ALTUS.



O Crucifer bone lucifator, Omniparens pie uerbigena,

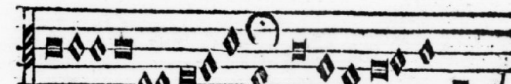


Aedite corpore uir gi ne o, Sed prius in genito =



re potens, Astra, solum, mare quàm fi e rent,

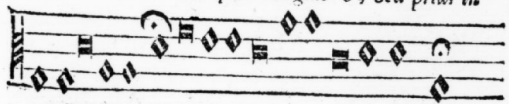
BASSVS.



O Brucifer bone lucifator, Omniparens pie uer =



bigena, Aedit corpore uirgine o, Sed prius in



genito re potens, Astra, solum, mare quam fierent.

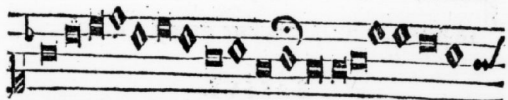
L. H.

Ode post cibum.

*Monocolos metrum hendecasyllabum, Phaetium. Constans
Spondeo, Dactylo & tribus Trocheis. Sic.*

-- - u u - u - u - u - u

DISCANTVS.



Pastis uisceribus ciboq; sumpto, Quæ lex corporis imbe-



cilla poscit, Laudè lingua deo patri rependat, Patri

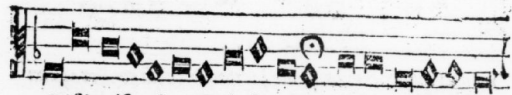


qui Cherubim sedile sacrū, Nec nō et Seraphim suū, /upremo



Subnixus soli o te net re git q;.

TENOR.



Pastis uisceribus ciboq; sumpto, Quæ lex corporis im-



becilla poscit, Laudem lingua deo patri rependat, Patri

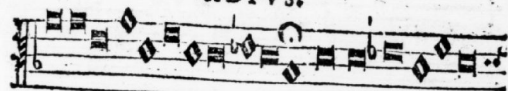


qui Cherubim sedile sacrum, Nec nō et Seraphim suum,

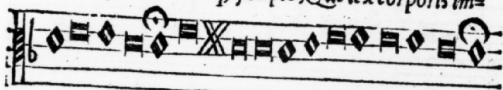


suprema Subnixus soli o te net re git q;.

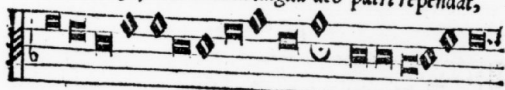
ALTVS.



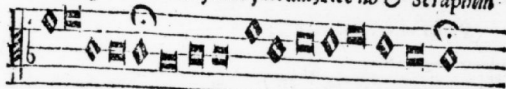
Pastis uisceribus ciboq; sumpto, Quē lex corporis im-



becilla poscit, Lau dem lingua deo patri rependat,



Patri qui Cherubim sedile sacrum, Nec nō & Seraphim

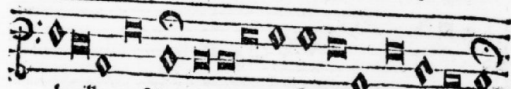


sum, supremo Subnixus fo li o tenet re git q;.

BASSVS.



Pastis uisceribus ciboq; sumpto, Quē lex corporis im-



becilla poscit, Laudem lingua deo patri rependat



Patri, qui Cherubim se di le sacrum, Nec non & Se-



raphim suum, supremo Subnixus folio tenet regit q;.

L. H.

ODE AD ACCENSIONEM LUCERNAE,
nonnulli ad incensionem cerei Paschalis inseri-
bunt.

Carmen monocolon Choriambicum Asclepiadæum, Te-
trametron, Acatalecticum, tetra-strophon, constans Spondaeo,
duobus Choriambis, & Pyrrichio, aut nonnunquam Iambo,
per hunc modum.

B

DISCANTVS.

Inuentor rutili dux bone luminis, Qui certis uicibus
tempora diuidis, Merſo ſole chaos ingruit horridum,
Lucem Chriſte tuis redde ſi de li bus.

BASSVS.

Inuentor rutili dux bone luminis, Qui certis uicibus tem=
pora diuidis, Merſo ſole chaos ingruit horridum, Lu=
cem Chriſte tuis redde fidelibus.

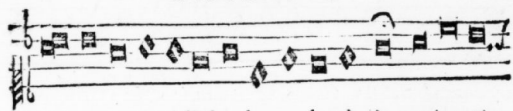
ALTVS.

Inuentor ruti i dux bone luminis, Qui certis ui=
cibus tempora diuidis, Merſo ſole chaos ingruit horridū,
Lucem Chriſte tuis red.ſe ſi de li bus.

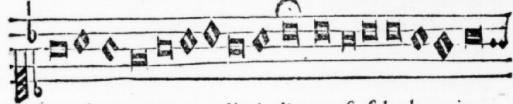
BASSVS.

Inuentor rutili dux bone luminis, Qui certis uici=
bus tempora di ui dis, Merſo ſole chaos ingru=
it horridum, Lucem Chriſte tuis redde ſi de li bus.

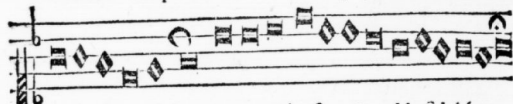
Ad Melos Ecclesiasticum.
DISCANTVS.



In uentor ru ti li dux bo ne lu mi nis, Qui certis

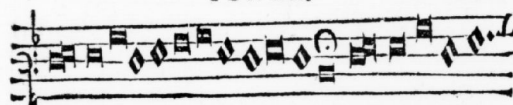


uicibus tempora di ui dis, Merfo sole chaos in=

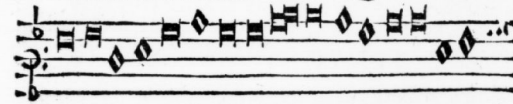


gruit horri dum, Lucem Christe tuis redde fidelibus.

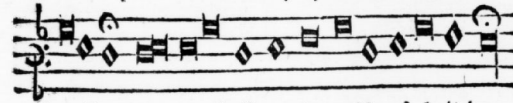
TENOR.



Inuentor ruti li dux bone lumini s. Qui certis uici=

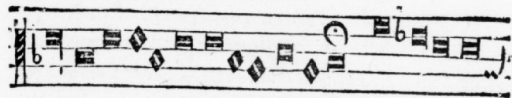


bus tempora diui dis, Merfo sole chaos ingruit

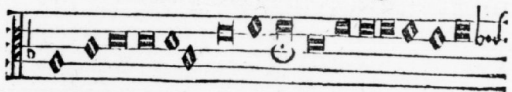


horridum, Lucem Christe tuis redde fi de li bus.

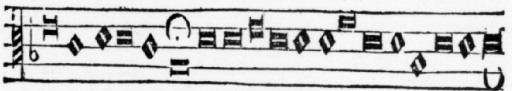
ALTVS.



Inuentor ruti li dux bone lumini s, Qui certis ui=

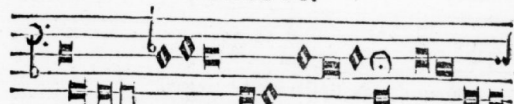


cibus tempora di ui dis, Merfo sole chaos in=



gruit horri dum, Lucem Christe tuis redde fidelibus.

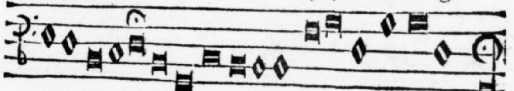
BASSVS.



In uentor ruti li dux bone lumini s, Qui certis ui=



cibus tempora di ui dis, Merfo sole chaos ingruit



it horridum, Lucem Christe tuis redde fi de li bus.

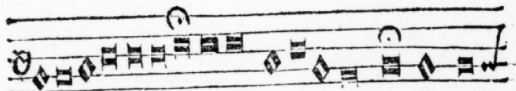
Sebast. Forst.

HYMNVS ANTE SOMNVM.

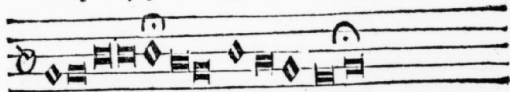
Ode monocolos. Carmen Dimetrum Iambicum, Ana-
creontium catalecticum, tetra-strophon. constans tribus pedi-
bus, & semipede. Estq; heptimemeris Iambica. Primus enim
locus habet Iambum uel Spondeum. Secundus solum Iambum.
Tertius Iambum uel Spondeum, in hunc modum.

— — — — —
— — — — —
— — — — —
— — — — —
— — — — —
— — — — —
— — — — —
— — — — —
— — — — —
— — — — —

DIS.

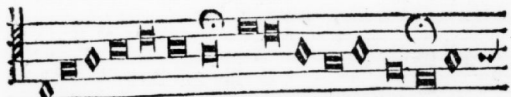


Ades pater supreme, Quē nemo uidit unquā, Pa tris

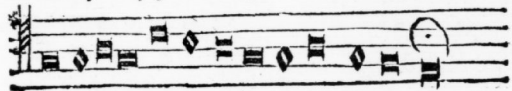


q; sermo Christe, Et spiritus be nigne.

TENOR.

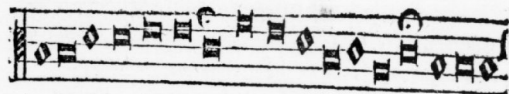


Ades pater supreme, Quē nemo uidit unquam, Pa-

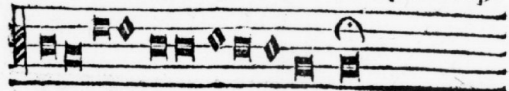


trisq; sermo Christe, Et spi ri tus be nig ne.

ALTVS.



Ades pater supreme, Quem nemo uidit unquā, Patrisq;

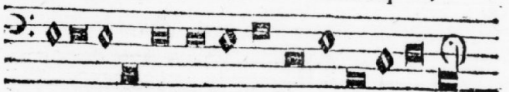


sermo Christe, Et spiritus be nig ne.

BASSVS.



Ades pater supreme, Quem nemo uidit unquam,



Patrisq; sermo Christe, Et spi ri tus be nig ne.

HYMNVS IEIVNANTIVM.

Carmen monocolon, Iambicum Senarium, acatalecticum,
Pentastrophon, locis imparibus, Spondeo, Anapæsto, Iambo,
Tribracho incedit. Paribus uero Iambo, & non semel Ana-
pæsto. In postremo loco & Pyrrichium aliquando patitur.

DIS.

O Nazarene dux Bethlem, uerbū patris, Quē partus alui uir-
ginalis protulit, Adesto castis Christe par-simonijs,
resumq; nostrum rex serene aspice. Ie iu-
niorum dum litamus uictimam.

TENOR.

O Nazarene dux Bethlem, uerbū patris, Quē partus
alui uirginalis protu lit, Adesto castis Christe par-
simonijs, Festumq; nostrum rex serene a spi ce, ieu-
niorum dum li ta mus ui cti mam.

ALTUS.

O Nazarene dux Bethlem, uerbū patris, Quē partus alui

uirgi na lis protulit, Adesto castis Christe parsi-
 mo ijs, Festumq; nostrum rex serenus a spi ce, ieu-
 niorum dum lita mus ui etiam.

BASSVS.

O Nazarene dux Bethlem, uerbum patris, Quē partus al-
 ui uirgi nalis protulit, Adesto castis Christe parsi-

monijs, festumq; nostrum rex serenus. appi ce,
 Ie iu ni o rum dum litamus uictimam.
 L. H.

HYMNVS POSTIEI VNIVM.

Carmen Sapphicum, Hendecasyllabum, constans Trocheis,
 Spondeo, Dactylo, & duobus Trocheis, hoc modo.

— u — — — u — — — u —
 Quartus est ubiq; Adonius ex Dactylo & Spondeo.
 — u — —

DIS.



Christe seruatorū regimen tuorum, Mollibus qui nos moderans
 habenis Leniter frenas, faciūq; septos Lege coerces.

TENOR.



Christe seruatorū regimen tuorū, Mollibus qui nos moderans
 habenis, Leniter frenas, faciūq; septos Lege coerces.

ALTVS.



Christe seruatorū regimen tuorum, Mollibus qui nos moderans
 habenis, Leniter frenas, faciūq; septos Lege coerces.



Christe seruatorū regimen tuorum, Mollibus qui nos moderans
 habenis, Leniter frenas, faciūq; septos Lege coerces.

HYMNVS OMNI HORA.

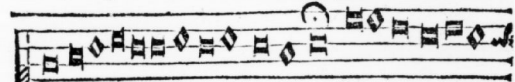
Ode est monocolos, tristrophos, carmine Trochaico, tetrametro quadrato, cataleptico, Archilochio, id constat septem pedibus & syllaba. paribus locis Trochæum habens, & per sepe Spondæum, nonnunquam etiam Anapestum. Imparibus Trochæum, Tribrachyn & Dactylum, hoc modo.

—v — — —v — —
 —v — — —vv

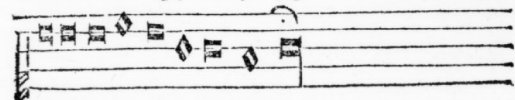
DISCANTVS.



Da puer plectrum, choræis ut canam fidelibus, Dulce car-

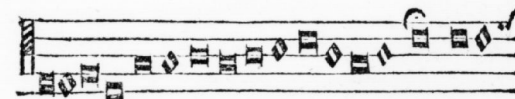


men & melodū, gesta Christi insignia, Hunc cænæ nostra

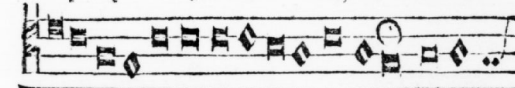


solum pangat, hunc laudet lyra,

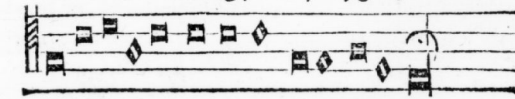
TENOR.



Da puer plectrum, choræis ut canam fide- bus, Dulce

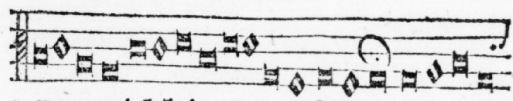


carmen & melodum, gesta Christi insignia, Hunc ca-

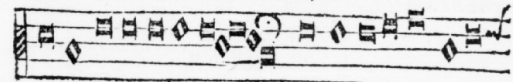


mæna nostra solum pangat, hunc laudet lyra.

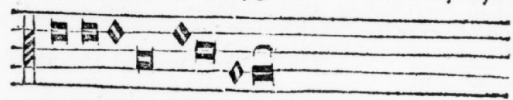
ALTVS.



Da puer plectrū, choræis ut canā fidelibus, Dulce carmen

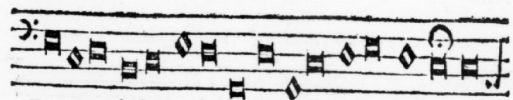


& melodū, gesta Christi insignia, Hunc cænæ nostra so-

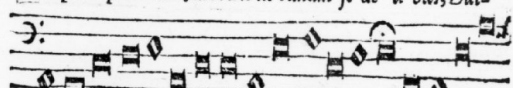


lum pangat, hunc laudet lyra.

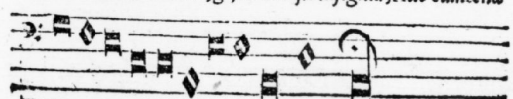
BASSVS.



Da puer plectrum, choræis ut canam fi de li bus, Dul-



ce carmen & melodū, gesta Christi insignia, Hunc cænæ



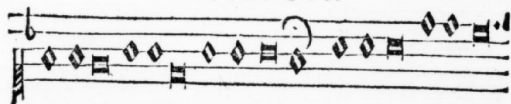
nostra solum pangat, hunc laudet lyra.

HYMNVS IN EXEQVIIS DEFVNCTORVM.

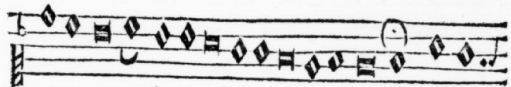
Monocolon est carmen, Anapaesticum, Partheniacum, Dimetrum, Catalecticum & Tetraſtrophon. Conſtans tribus Anapaſtis & ſyllaba. Poeta in prioribus locis duobus ſepe numero Spondeum admifcet.

uu - uu - uu - u

DISCANTVS.



Deus igne e fons animarum, Duo qui socians

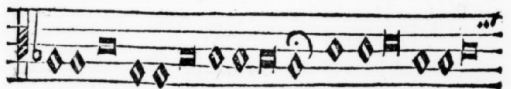


elementa, Viuum ſimul ac moribundum Homi-

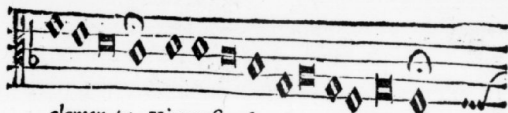


nem pater effigi a ſti.

TENOR.



Deus igne e fons animarum, Duo qui socians

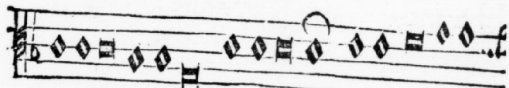


elementa, Viuum ſimul ac moribundum

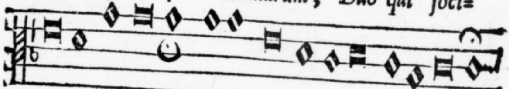


Hominem pater effigi a ſti.

ALTVS.



Deus igne e fons animarum, Duo qui soci-

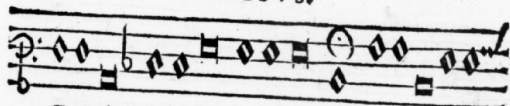


ans elementa, Viuum ſimul ac moribundum



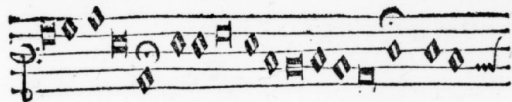
Hominem pater effigi a ſti.

BASSVS.

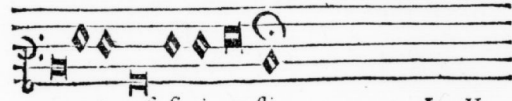


Deus igne e fons animarum, Duo qui soci-

C



ans elementa, Vivum simul ac moribundum Homi-



neni pater ej si gi a sti.

L. H.

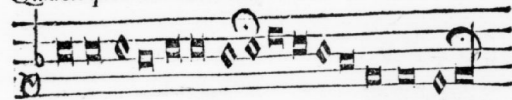
Hymnus octavo Kalendas Ianuarias.

Iambicum dimetrum, sicut Ales diei nuncius.

DISCANTVS.

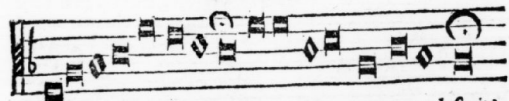


Quid est quod arctum circulum Sol iam recurrens deserit ?

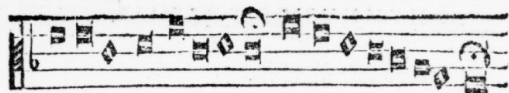


Christus ne terris nascitur, Qui lucis auget tramitem ?

TENOR.



Quid est quod arctum circulum, Sol iam recurrens deserit ?



Christus ne terris nascitur, Qui lucis auget tramitem ?

ALTVS.



Quid est quod arctum circulum Sol iam recurrens deserit ?



Christus ne terris nascitur, Qui lucis auget tramitem ?

BASSVS.



Quid est quod arctum circulum Sol iam recurrens deserit ?



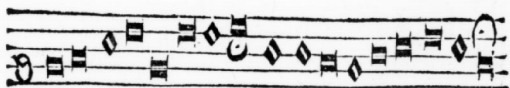
Christus ne terris nascitur, Qui lucis auget tramitem ?

HYMNVS EPIPHANIAE,

Iambicum sicut superioris.

-- v - -- v -

DIS.

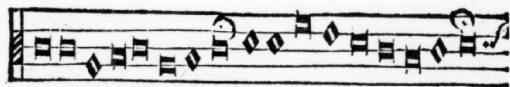


Quicumq; Christum queritis, Oculos in altum tollite,

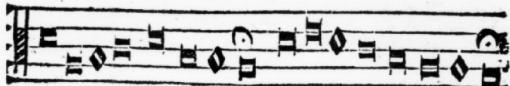


Illic li ce bit ui se re, Signum perennis gloriae.

TENOR.

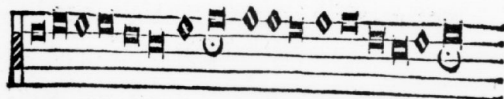


Quicumq; Christum queritis, Oculos in altum tollite,

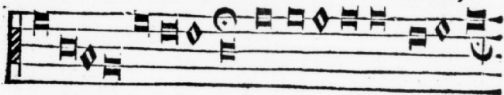


Illic li ce bit ui se re, Signum perennis gloriae.

ALTVS.

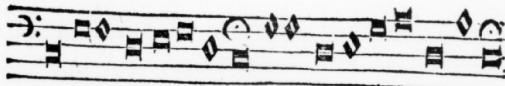


Quicumq; Christum queritis, Oculos in altum tollite,

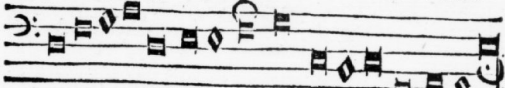


Illic li ce bit uise re Signum perennis glo ri a e.

BASSVS.



Quicumq; Christum queritis, Oculos in altum tollite.



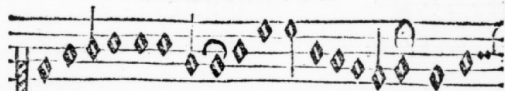
Illic li cebit ui se re Signum perennis ploriae.

Hæcenus Cathemerinon.

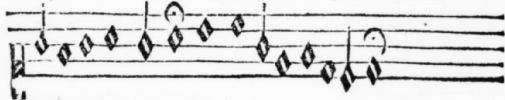
AGON BEATI LAURENTII, EX
libro Peristephanon eiusdem poete.

Carmen est Iambicum dimetrum, proxinis nihil absumi-
le, hoc modo.

DISCANTVS.



Antiqua sanorum parens, Iam Roma Christo dedita, Lauren-

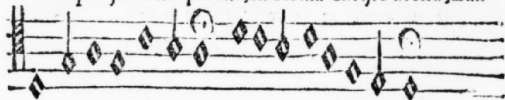


tio uictrix duce, Ritum triumphas barbarum.

TENOR.

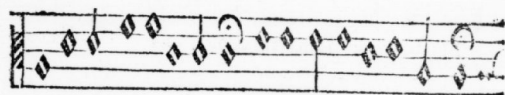


Antiqua sanorum parens, Iam Roma Christo dedita, Lau-

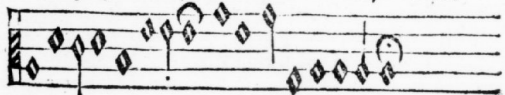


rentio uictrix duce, Ritum triumphas barbarum.

ALTVS.

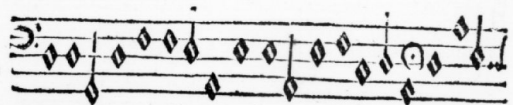


Antiqua sanorum parens, Iam Roma Christo dedita,

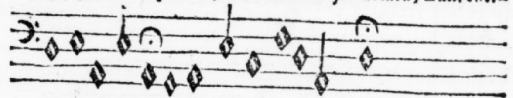


Laurentio uictrix duce, Ritum triumphas barbarum.

BAS.



Antiqua sanorum parens, Iam Roma Christo dedita, Laurenti-



o uictrix duce, Ritum triumphas barbarum.

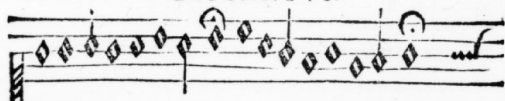
L. H.

MARTYRIUM BEATI VINCENTI,
tj, ex peristephanon.

Eiusdem generis dimetri Iambici.

-- v -- -- v --
Vel sic.
v -- v -- -- vv

DISCANTVS.

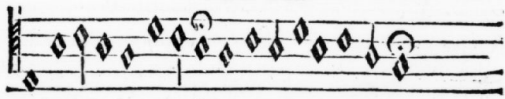


Beate Martyr, prospera Diem triumphalem tuum,



Quo sanguinis merces tibi Corona Vincenti datur.

TENOR.

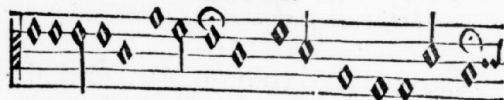


Beate Martyr, prospera Diem triumphalem tuum.

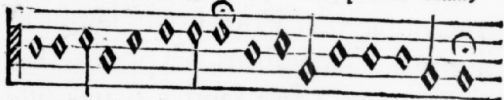


Quo sanguinis merces tibi Corona Vincenti datur.

ALTVS.

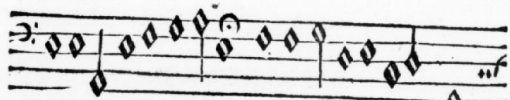


Beate Martyr, prospera Diem triumphalem tuum,

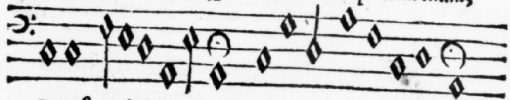


Quo sanguinis merces tibi Corona Vincenti datur.

BASSVS.



Beate Martyr, prospera Diem triumphalem tuum,



Quo sanguinis merces tibi Corona Vincenti datur.

L. H.

C 5

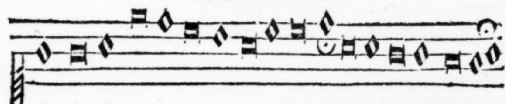
ODE IN QVA POETA DE SEIPSO,
Aut si maior, prefatio est in Enchiridion.

Carmen est dicolon inæqualium con-
uersionum, quodq; melodia non reci-
procante ægeat. Prior uersus lambicus
Senarius, Catalecticus, Hypponactius:
constat quinq; fere lambis & una syl-
laba.

Secundus est Trochaicus, Euripidius
dimeter, catalecticus, tribus pedibus ijsq;
magna ex parte Trochæis, hoc modo.

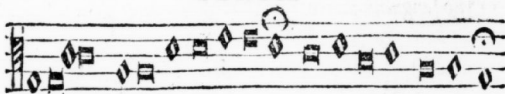
v - v - v - v - v
- v - v - v -

DISCANTVS.



Pi us, fi de lis, innocens, pudicus, Dona conscientia.

TENOR.



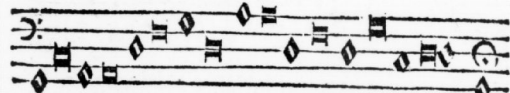
Pius, fide lis, innocens, pudicus, Dona consci en ti a.

ALTVS.



Pius, fidelis, innocens, pudicus, Dona conscientia.

BASSVS.



Pius, fidelis, innocens, pudicus, Dona conscientia.

L. H.

Hucusq; Prudentiana.

SEDVLII

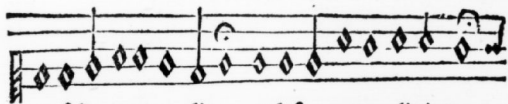
EST ILLVD DE MIRACVLIS

*Christi, consueto melo, quo utitur Cho-
rus Ecclesiasticus.*

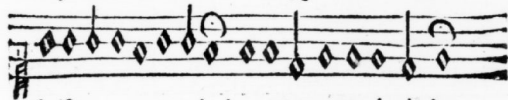
Est autem Iambicum quaternarium, ut superiora pleraq̄.

-- v - - - v - -

DISCANTVS.

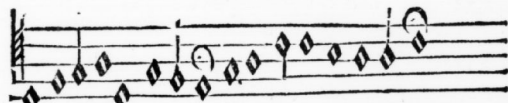


A solis ortus cardine, Adusq; terræ limitem,

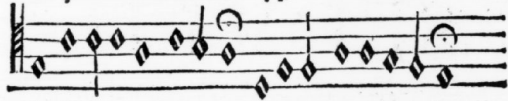


Christum canamus principem, Natum Maria uirgine.

TENOR.

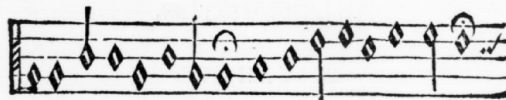


A solis ortus cardine, Adusq; terræ li mi tem,

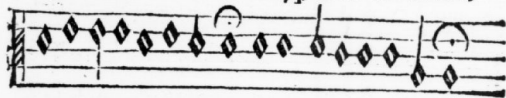


Christum canamus principem, Natum Maria uirgine.

ALTVS.

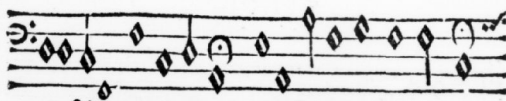


A solis ortus cardine, Adusq; terræ li mi tem,

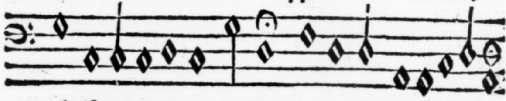


Christum canamus principem, Natum Maria uirgine.

BASSVS.



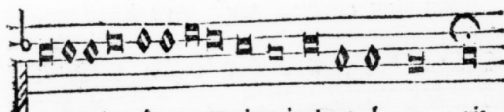
A solis ortus cardine, Adusq; terræ li mi tem,



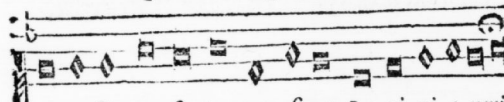
Christum canamus principem, Natum Maria uirgine.

Sequitur Melos Heroicum
in septem uersus.

DISCANTVS.

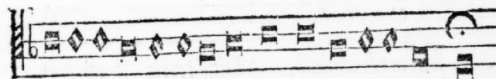


Arma uirumq; cano, Troie qui primus ab oris.

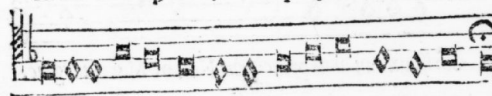


I t a l i a m f i t o p r o f u g u s , L a u i n i a u e n i t
V e r t e .

TENOR.

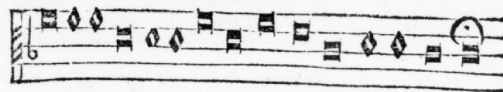


Arma uirumq; cano, Troie qui primus ab oris,



I t a l i a m f i t o p r o f u g u s , L a u i n i a u e n i t

ALTVS.

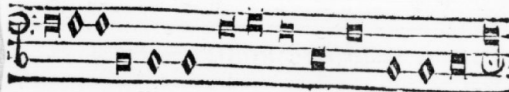


Arma uirumq; cano, Troie qui primus ab oris,

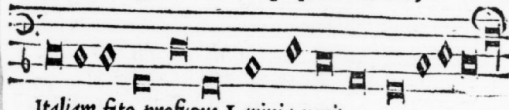


I t a l i a m f i t o p r o f u g u s L a u i n i a u e n i t
V e r t e .

BASSVS.

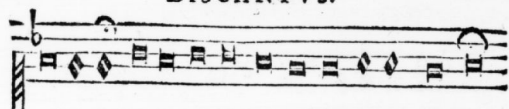


Arma uirumq; cano, Troie qui primus ab oris,



I t a l i a m f i t o p r o f u g u s L a u i n i a u e n i t

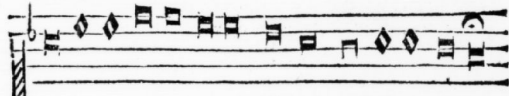
DISCANTVS.



Littora: multum ille & terris iactatus & al to,

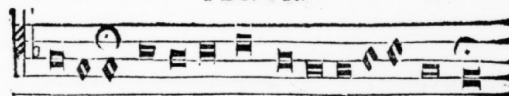


Vi superum, seuæ memorem Iu no nis ob iram.

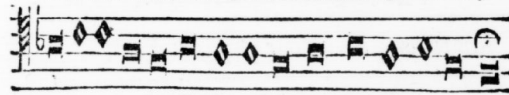


Multa quoq; & bello passus dum conderet urbem.

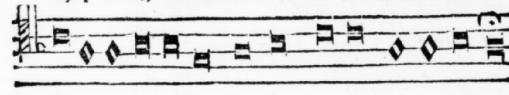
TENOR.



Littora: multum ille & terris iactatus & al to,



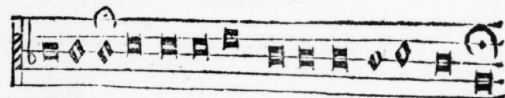
Vi superum, seuæ memorem Iu no nis ob iram.



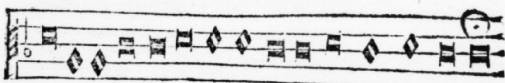
Multa quoq; & bello passus dum con de ret urbem.

Verte.

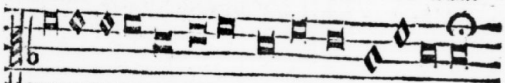
ALTVS.



Littora: multum ille & terris iactatus & alto.

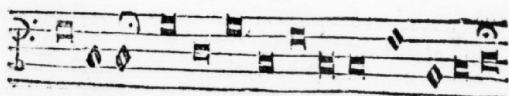


Vi superum, seuæ memorem Iunonis ob iram.

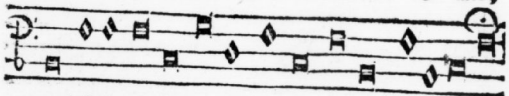


Multa quoq; & bello passus, dum conderet urbem;

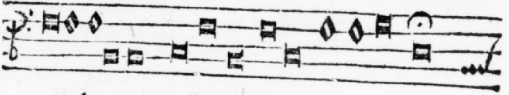
BASSVS.



Littora: multum ille & terris iactatus & alto,



Vi superum seuæ memorem Iunonis ob iram.



Multa quoq; & bello passus, dum conderet urbem.

Verte.


D

DISCANTVS.



Inferret q̄; deos Lati o, genus unde Latinum,
Albani q̄; patres, atq; altæ mœnia Romæ.

TENOR.



Inferretq̄; deos Latio, genus unde Latinum.
Albaniq̄; patres, atq; altæ mœnia Romæ.

ALTVS.



Inferretq̄; deos Latio, genus unde Latinum,
Albaniq̄; patres, atq; altæ mœnia Romæ.

BASSVS.



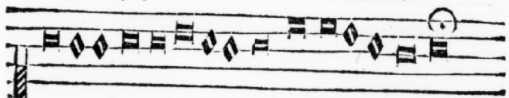
Inferretq̄; deos Latio, genus unde Latinum,
Albaniq̄; patres, atq; altæ mœnia Romæ.

ALTERVM IN VERSVS DVOS,
Hexametros & Heroicos.

DISCANTVS.

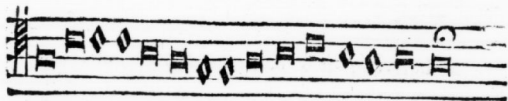


Daphnis ego in syluis hinc usq; ad sydera notus,
O formose puer nimium ne crede colori:

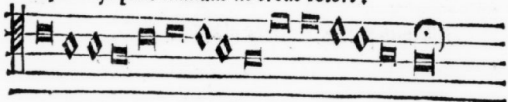


Formosi pecoris custos formosior ipse.
Alba ligustra cadunt, uaccinia nigra leguntur.

TENOR.

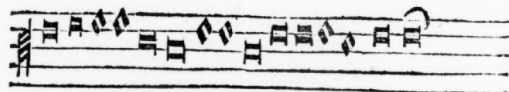


Daphnis ego in syluis hinc usq; ad sydera notus,
O formose puer nimium ne crede colori:

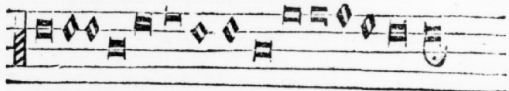


Formosi pecoris custos formosior ipse.
Alba ligustra cadunt, uaccinia nigra leguntur.

ALTVS.



Daphnis ego in syluis hinc usq; ad sydera notus,
O formose puer, nimium ne crede colori:

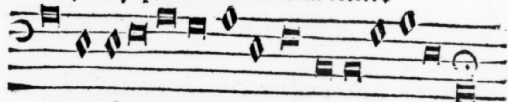


Formosi pecoris custos formosior ipse.
Alba ligustra cadunt, uaccinia nigra leguntur.

BASSVS.



Daphnis ego in syluis hinc usq; ad sydera notus,
O formose puer, nimium ne crede colori:



Formosi pecoris custos formosior ipse.
Alba ligustra cadunt, uaccinia nigra leguntur.

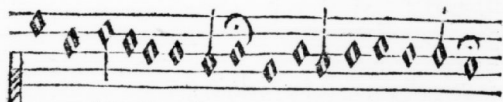
SEB. FORST.

D 3

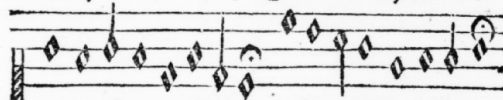
APPENDATUR HVC DENIQUE

& alia dimetri Iambici melos. quoniam uidemus
chorum sacrum ueteris Ecclesie, hoc, præser-
tim inter nocturna uespertinaq; psal-
morum ubiq; ferè delectatum.

DISCANTVS.



Immense cœli conditor, Qui mixta ne confunderent,

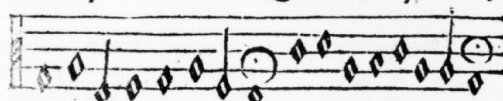


Aquæ fluentia diuidens, Cœlum dedisti limitem.

TENOR.

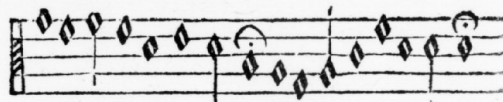


Immense cœli conditor Qui mixta ne confunderent,

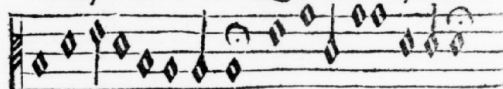


Aquæ fluentia diuidens, Cœlum dedisti limitem.

ALTVS.

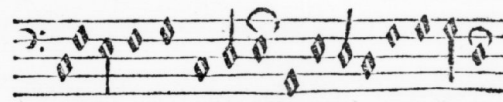


Immense cœli con di tor, Qui mixta ne confunderent,

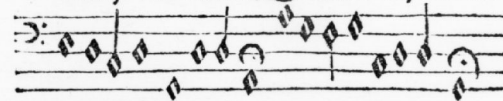


Aquæ fluentia diuidens, Cœlum dedisti limitem.

BASSVS.



Immense cœli conditor, Qui mixta ne confunderent,



Aquæ fluentia diuidens, Cœlum dedisti limitem.

Lucerna pedibus meis uerbum
tuum, & lumen semitis meis.

Psal. 118.

19 JY 62