

A faery song

text by W.B. Yeats

Paolo Ugoletti

♩ = 54

Voce

Pianoforte

legato e morbido

4

A fae - ry song

7

a fae - ry song — give to these chil - dren

2
10

A faery song

new from the world, si - lence and love, si - lence and love,

This system contains the first three measures of the song. The vocal line is in treble clef with a key signature of two sharps (D major). The piano accompaniment is in bass clef. The lyrics are: "new from the world, si - lence and love, si - lence and love,". The piano part features a steady eighth-note accompaniment in the left hand and a melody in the right hand with accents.

13

give to these chil - dren new from the world, Rest far from men,

This system contains measures 4 through 7. The vocal line continues with the lyrics: "give to these chil - dren new from the world, Rest far from men,". The piano accompaniment continues with the same rhythmic pattern.

16

Rest far from men.

This system contains measures 8 through 11. The vocal line has a rest for the first measure, followed by the lyrics: "Rest far from men." The piano accompaniment continues with the same rhythmic pattern.

20

We who are old, old and gay, O — so old,

The musical score for measures 20-23 consists of a vocal line and a piano accompaniment. The vocal line is in a treble clef with a key signature of two sharps (F# and C#). The lyrics are: "We who are old, old and gay, O — so old,". The piano accompaniment features a steady eighth-note bass line in the left hand and a more melodic line in the right hand.

24

o so gay. — Thou-sands of y - ears, thou-sands of y - ears

The musical score for measures 24-26 continues the vocal line and piano accompaniment. The lyrics are: "o so gay. — Thou-sands of y - ears, thou-sands of y - ears". The piano accompaniment maintains the same rhythmic pattern as the previous section.

27

If all were told, — if all were told: Give to these chil - dren

The musical score for measures 27-30 concludes the vocal line and piano accompaniment. The lyrics are: "If all were told, — if all were told: Give to these chil - dren". The piano accompaniment continues with the same rhythmic pattern.

A faery song

new from the world, Si - lence and love, si - lence and love;

30

8

This system contains the first three measures of the song. The vocal line is in treble clef with a key signature of two sharps (D major). The piano accompaniment is in bass clef. The lyrics are: 'new from the world, Si - lence and love, si - lence and love;'. Measure numbers 30 and 8 are indicated.

And the long dew drop - ping ho - urs of the night — and — the star — a -

33

This system contains measures 33 through 36. The vocal line continues with the lyrics: 'And the long dew drop - ping ho - urs of the night — and — the star — a -'. Measure numbers 33 and 36 are indicated.

bove a - bove —

36

This system contains measures 36 through 39. The vocal line concludes with the lyrics: 'bove a - bove —'. Measure numbers 36 and 39 are indicated.

40

Give to these-children,

43

new from the world, Rest far from men, rest far from men. Is

46

a-ny-thing bet-ter? a-ny-thing bet-ter? Tell us it then — tell us it then:

50

Us who are old old and gay, o — so old

53

o so gay! Thou-sand of y - ears thou-sand of y - ears

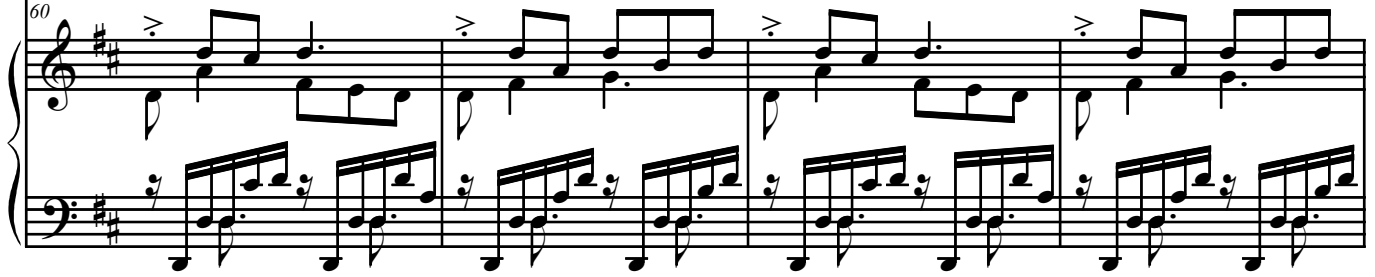
56

If all were told — if all were told —

60



60



64



A fae - ry song

a fae - ry song —

64



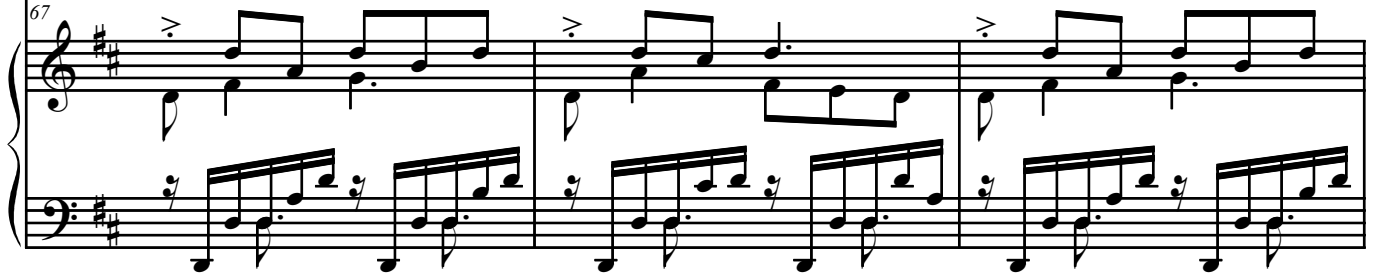
67



Give to these chil - dren new from the world,

Si - lence and love,

67



70

si - lence and love. Give to these chil - dren new from the world,

73

Rest far from men, rest far from men.

76

A fae - ry song a fae - ry song.