

BALLET

(from: *Terpsichore*, TMA 259 - 1612)
for Oboe & Harpsichord

Score (01':16:)

Anonymous

Arr. Michel Rondeau

Part I - Allegretto ♩ = 90

Oboe

Harpsichord

Detailed description: This block contains the first five measures of the score. The Oboe part is written in a single treble clef staff with a 2/4 time signature. It begins with a repeat sign and a first ending bracket. The Harpsichord part is written in two staves (treble and bass clefs) with a 2/4 time signature. It features a rhythmic accompaniment with chords and moving lines in both hands.

Ob.

Hpschd.

Detailed description: This block contains measures 6 through 10. The Oboe part continues with a first ending bracket over measures 7 and 8, followed by a second ending bracket over measures 9 and 10. The Harpsichord part continues with its accompaniment. Measure numbers 6 and 11 are indicated at the start of the respective staves.

Ob.

Hpschd.

Part II

Detailed description: This block contains measures 11 through 15, marking the beginning of Part II. The Oboe part has a first ending bracket over measures 12 and 13, followed by a second ending bracket over measures 14 and 15. The Harpsichord part continues with its accompaniment. Measure numbers 11 and 16 are indicated at the start of the respective staves.

Ob. 18

Hpschd.

Detailed description: This system contains measures 18 through 24. The Oboe part (top staff) begins with a melodic line starting on G4, moving through A4, B4, and C5, with some chromaticism and grace notes. The Harpsichord part (bottom staves) provides accompaniment with chords and moving lines in both hands. Measure 24 ends with a repeat sign and a fermata over the final note.

Ob. 25

Hpschd.

Detailed description: This system contains measures 25 through 31. The Oboe part (top staff) has a more melodic and sustained line, ending with a fermata. The Harpsichord part (bottom staves) continues with accompaniment, featuring some sixteenth-note patterns in the left hand. Measure 31 ends with a repeat sign and a fermata over the final note.

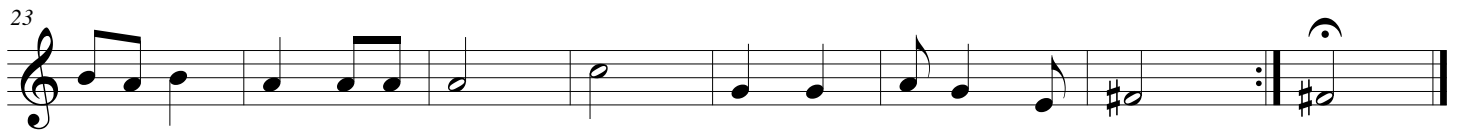
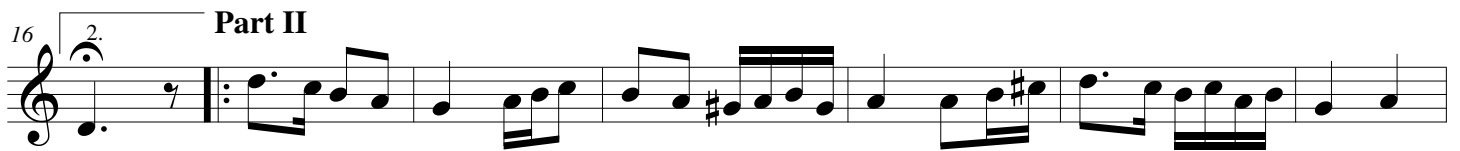
BALLET

(from: *Terpsichore*, TMA 259 - 1612)
for Oboe & Harpsichord

Oboe

Anonymous
Arr. Michel Rondeau

Part I - Allegretto ♩ = 90



BALLET

(from: *Terpsichore*, TMA 259 - 1612)
for Oboe & Harpsichord

Harpsichord

Anonymous
Arr. Michel Rondeau

Oboe

Part I - Allegretto ♩ = 90

Harpsichord

Ob.

Hpschd.

Ob.

Hpschd.

Part II

Ob. ¹⁸

Hpschd.

This system contains measures 18 through 24. The Oboe part (top staff) begins with a treble clef and a key signature of one sharp (F#). It features a melodic line with eighth and sixteenth notes, including a triplet of eighth notes in measure 20. The Harpsichord part (bottom staves) consists of two staves with a grand brace. The right hand plays chords and moving lines, while the left hand provides a rhythmic accompaniment with eighth and sixteenth notes. Measure 24 ends with a double bar line.

Ob. ²⁵

Hpschd.

This system contains measures 25 through 31. The Oboe part (top staff) continues the melodic line, ending with a fermata over a half note in measure 31. The Harpsichord part (bottom staves) continues its accompaniment, ending with a fermata over a whole note chord in measure 31. Measure 31 is marked with a double bar line.