

GAETANO DONIZETTI

L'ELISIR D'AMORE

ATTO I. TACET

ATTO II.

N. 6 Coro d'Introduzione

CLARINETTO II. in Si \flat

Allegretto

6

p

trill

1

ff

2

XVIII

EDWIN F. KALMUS

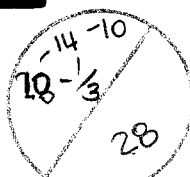
PUBLISHER OF MUSIC
NEW YORK, N. Y.

한국예술종합학교



60F 24.010
7 1983

악보



p

ff

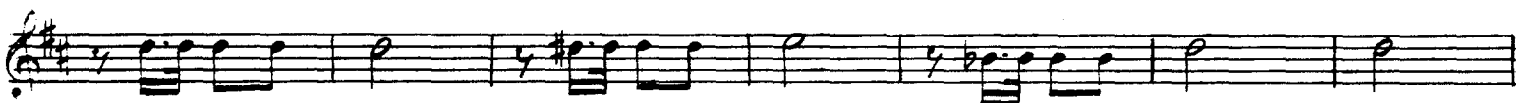
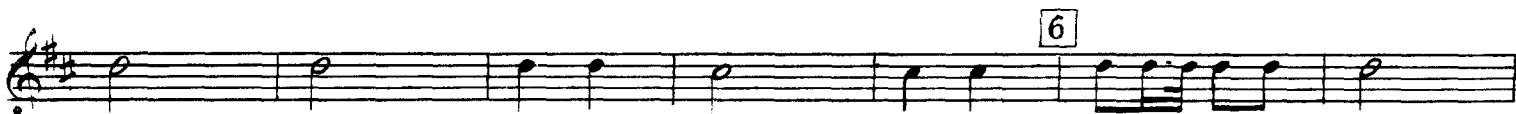
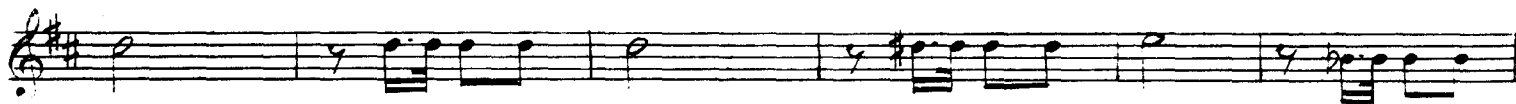
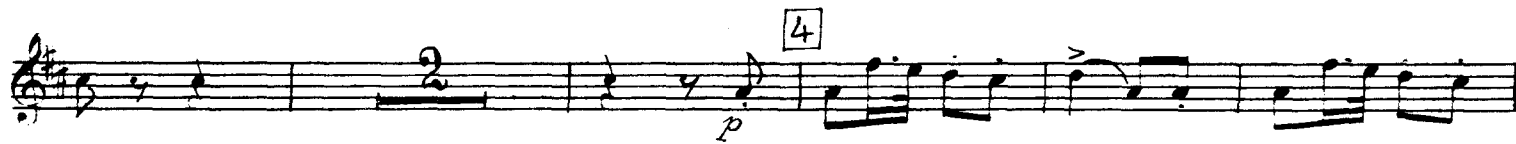
2

p

tr

3

ff



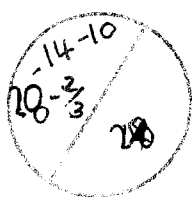
XVIII



670.88

1 DK83L

FTO



Barcaruola

Recit. face *La Nina Gondoliera e il Senator Tredenti.*

(Parla/o) *Barcarola a due voci. Attenti! At-tenti!* 7 5 16 8 13

9 *Ado-rata* 10 *f*

11 *Più allegro* *f*

12 *Recit. Sia il ben ve-inu-to! Andiam a segnar l'atto: il tempo affretta* 15 13 *I. Tempo Allegretto* 6

Musical score for six staves. The first staff begins with a piano (*p*) dynamic. The second staff features a trill (*tr*) marking. The fourth staff is marked fortissimo (*ff*). The sixth staff concludes with a fermata and a '2' above it, indicating a second ending.

XVIII



070-88 / 880801



-14-10
 8-3/3
 28

14

15 *Più allegro*

16

N: 7 e 8 *Tace*

Quartetto

N: 9

Primi tempi tacet sino alle parole: M'ascolta, m'ascolta, m'ascolta.

48 26 49 32 50 29 *da rasi-car, da*
 (Coro)

51 *rasi-car*
 ff

20

p *cresc. poco a poco* *f*

53 *ff*

54 *ff*

55 Più mosso

5

6

56

1

2

3

4

5

6

7

8

VUOTA

VUOTA

N° 10 - 11 - 12 *Tacet.*

Recit. ed Aria finale 2°

N° 13.

Recit. tacet 85 *Allegretto* *a tempo* *Ei cor - regge ogni di - fetta.* 86 *a tempo* *Egli e un offa sedu -*

- cente *a tempo* 87 *Sveglia - rino è per l'a - more* 88 *a tempo* *Predi - letti dalle stelle,* 89 *Più allegro*

A musical score consisting of six staves. The first staff begins with a piano (*p*) dynamic and a *cresc.* (crescendo) marking with a dashed line. A box containing the number 90 is positioned above the second staff. The second staff ends with a forte (*f*) dynamic. The third staff contains several measures with eighth and sixteenth notes. The fourth staff features a melodic line with a slur and an accent (>) over the first note. The fifth staff continues with rhythmic patterns. The sixth staff concludes with a final note and a double bar line.