

Alto:

U-n-u-n-f-r-r-für U-n-f-r-M-a-t-z-mat-z-u-n-f-r-Mat-z, 2
2
h-a-t-t-h-a-t-t-r-i-g-i-n-u-n-u-n-n-i-n-u-n-n-u-n-g-r-o
g-r-o-f-f-r-u-n-f-r-g-r-o-p-r-u-l-a-u-l-a-u-g-r-u-n-g-r-o-l-a-u-g-r-u-n-g-r-o
g-r-o-f-f-r-u-n-g-r-o-l-a-u-g-r-u-n-g-r-o-l-a-u-g-r-u-n-g-r-o-l-a-u-g-r-u-n-g-r-o
U-n-f-r-Mat-z-h-a-t-t-r-i-n-u-n-g-r-o-f-f-r-u-n-g-r-o-l-a-u-g-r-u-n-g-r-o
U-n-f-r-R-o-t-f-r-o-s-t-u-n-d-u-n-d-B-r-a-u-n-u-n-d-B-r-a-u-n,
U-n-f-r-R-o-t-f-r-o-s-t-u-n-d-B-r-a-u-n, u-n-c-h-w-a-c-h-u-n-c-h-w-a-c-h,

Verte Cito.

U-ter-ru, u-ter-ru nach wasser f-ü-jü, d-e-u-lu Jüden Jüden

U-ter-ru wasser Roth und braun nach wasser Jüden u-ter-ru, u-ter-ru

Motz halt einen großen langen bart wasser Roth und braun nach

wasser Jüden u-ter-ru nach wasser Jüden u-ter-ru d-i-e-die f-e-r-sü

die f-e-r-sü l-o-l-o, f-e-r-sü, l-o-l-o, die f-e-r-sü l-o-l-o, d-e-f-e-r-l-u-

U-ter-ru die f-e-r-sü l-o-l-o, f-e-r-sü l-o-l-o, f-e-r-sü l-o-l-o, f-e-r-sü l-o-l-o



U-ter-ru die f-e-r-sü l-o-l-o, f-e-r-sü l-o-l-o, f-e-r-sü l-o-l-o, f-e-r-sü l-o-l-o

Frögen, die für dich gelun, Gott ist dein Viel betro - - - gen und b. als

r-i-u-uin B-r-ü-bräu, t-r-l-tal Brütal als ein brütal Brütal,

S-c-h-u-r-i, S-i-g-u-r-i, d-r-r-D-r, Brütal S-i-g-u-r-i, i-s-t i-s-t,

M-r-t-z-m-a-z i-s-t m-r-t-z a-u-f-rü-s-t, g-r-g-r, a-u-f-g-r-z-o-z-o-a-u-f

g-r-z-o-g-r-u-g-r-u a-u-f-g-r-z-o-g-r-u   als ein

brütal S-i-g-u-r-i, i-s-t m-r-t-z a-u-f-g-r-z-o-g-r-u 

Verte:

ti.

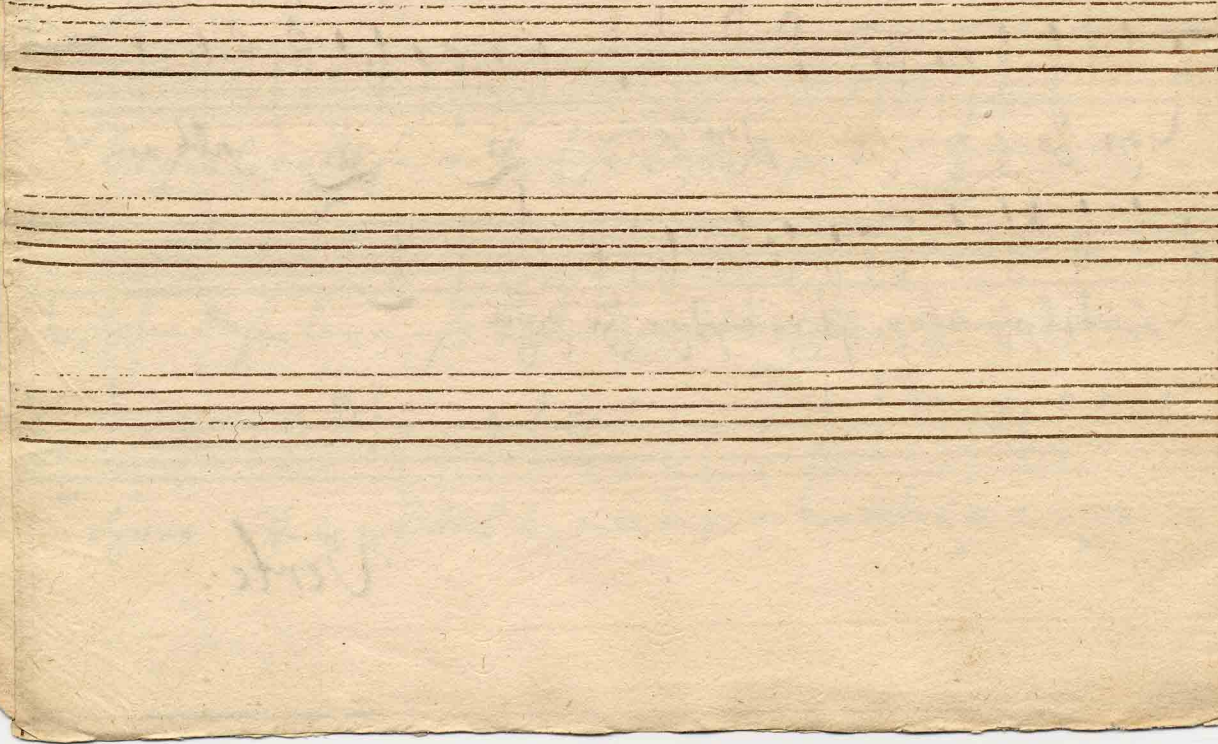
Unser Moltz hat einen, grossen, lau - - - gen lau - - - gen

Bart, waliger Rotz und braun nachgerostet für - den rot, dieses

loße Diefeln hat ihren Viel betrogen als ein brütal Diefeln zu

ist er nicht gezo

Finis.





I - x - t - u - r - u - l - f - e - r - u - s - u - l - f - e - r - u - s - u - l - f - e - r - u - s - f - ü - j - ü - d - e - n - d - e - n



f - ü - d - e - n - a - u - t - a - u - t - a - u - t - u - l - f - e - r - u - s - R - e - s - u - r - r - e - x - t - u - r - u - s - u - l - f - e - r - u - s



u - l - f - e - r - u - s - f - ü - d - e - n - u - l - f - e - r - u - s - u - l - f - e - r - u - s - u - l - f - e - r - u - s - u - l - f - e - r - u - s



u - l - f - e - r - u - s - u - l - f - e - r - u - s - u - l - f - e - r - u - s - u - l - f - e - r - u - s - u - l - f - e - r - u - s



u - l - f - e - r - u - s - u - l - f - e - r - u - s - u - l - f - e - r - u - s - u - l - f - e - r - u - s - u - l - f - e - r - u - s



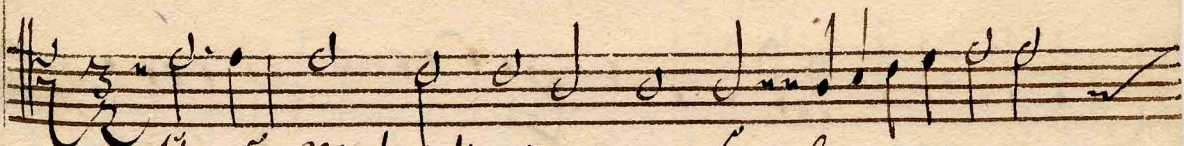
u - l - f - e - r - u - s - u - l - f - e - r - u - s - u - l - f - e - r - u - s - u - l - f - e - r - u - s - u - l - f - e - r - u - s



u - l - f - e - r - u - s - u - l - f - e - r - u - s - u - l - f - e - r - u - s - u - l - f - e - r - u - s - u - l - f - e - r - u - s

o-tro, betro, g-r-u-gan be tro - - - gan die für lofe
 die balen salt iferns viel betro - - - gan a-l-l-er-i
 u-rin D-r-u, B-n, d-r-l-tal brütal allern brütal brütal
 d-r, o-f-n-r-i, p-furi, d-r-r-der d-furi der, allern brütal p-furiden
 i-f-t-ist, M-a-t-iz-Matz ist matz a-u-ff-ruff, g-
 r-g-ruff ge, z-s-zo ruff ge zo, g-r-u, gan ruff ge zo,
 gan allern brütal d-furiden, ist r-ruff ge - - - gan.

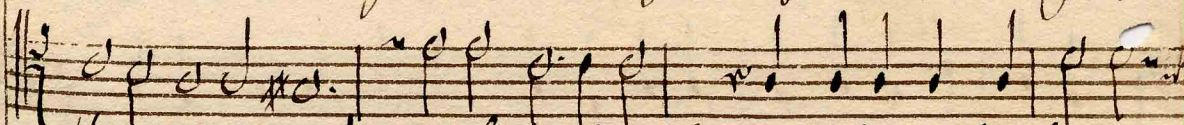
Verte:



Unser Mox hatt einen grossen lau - - - gen



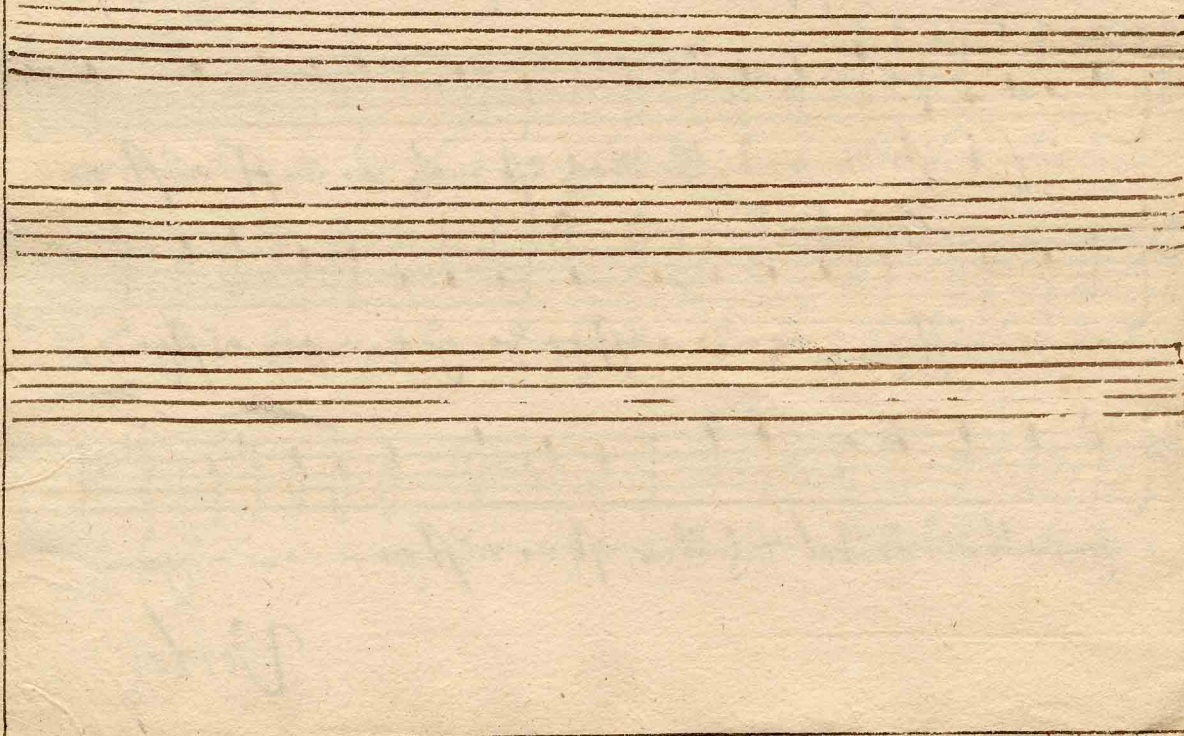
lau - - - gen hat halbes Koffin und bräun noch gar

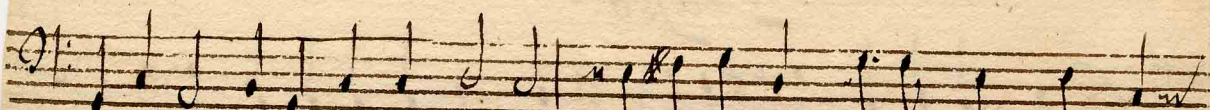


fü - - - In dem diese losen Befehl hat ihnen viel be trogen





alle ein Bütel befunden ist er rüffte zu - - - gen





J-u-Jü, I-r-u-Du Jüden a-r-t-ent, Welcher Gott sind brüder

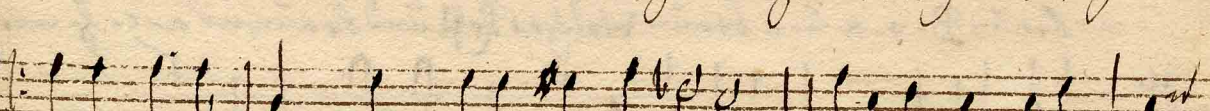

nach welcher Jüden art, Unser Matz soll einen großen laugen bracht


Welcher Gott sind brüder nach welcher Jüden art, nach welcher Jüden art


D-i-r-dit, f-a-r-für diesen, l-o-lo, f-r-fu, lo fu, D-c-f-r-ben


Tafeln, dieses lo fu Tafeln f-a-t-t, f-a-t-i-bif a-r-r-und d-er, D-i-


r-l-Wiel, b-t-bo, t-r-o-tro betro, g-r-u-gu betro-gu betro-gu


Dieses lo fu Tafeln sollt i-er-Wiel betro-gu a-l-b-ald, a-i-u-nin



B-r-ä-utal, l-tal brütal, als ein brütal Brütal, G-e-f-u-r-ig



D-e-r-brütal defundat, als ein brütal defundat i-f-t-ist



M-a-t-z-mat ist matz u-i-f, rüff, g-r-g, rüff, z-o-zo, rüff

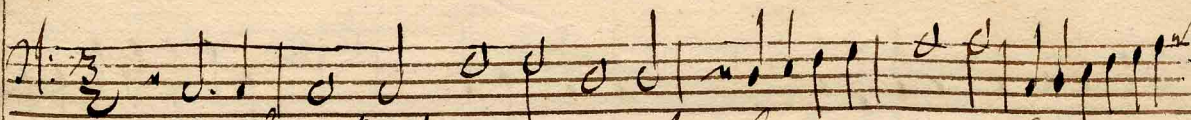


z-o-g-u-gu rüff z-o-gu *Q* als ein brütal defundat



ist no rüff z-o-gu

Perle:



Unser Metzger einen großen lau - - - - - einen lau - -



- - - - - einen Hart, Welcher Rotz und braun nach dem Jüden war



Dieser laßt die Galen sattigen Vielbe trogen als ein brütal



Schwinder ist es nicht gezo gen.

Handwritten text in the left margin, possibly a page number or reference, including the number '111'.

35:19,

Madriuale.

8

Unser Matz hatt einen
Zwoyten Längen:

a 3

Alt. Tenor. Bass:

di

Johan Theile:

Madrigale: a

Handwritten musical notation on a single staff, featuring a treble clef, a common time signature, and a key signature of one sharp (F#). The notation includes various note values, rests, and accidentals.

Unser Maß:

Handwritten musical notation on a single staff, continuing the piece with a treble clef and a common time signature. The key signature remains one sharp (F#).

Handwritten musical notation on a single staff, featuring a treble clef and a common time signature. The key signature changes to two sharps (F# and C#).

Handwritten musical notation on a single staff, featuring a treble clef and a common time signature. The key signature changes to one sharp (F#).

Handwritten musical notation on a single staff, featuring a treble clef and a common time signature. The key signature changes to two sharps (F# and C#).

Handwritten musical notation on a single staff, featuring a treble clef and a common time signature. The key signature changes to one sharp (F#).

Handwritten musical notation on a single staff, featuring a treble clef and a common time signature. The key signature changes to two sharps (F# and C#).

de a 3 A. T. B. di T.

Basso Continuo.

A handwritten musical score for Basso Continuo, consisting of seven staves of music. The notation includes various rhythmic values (quarter, eighth, and sixteenth notes), rests, and accidentals (sharps and flats). The score is written in a cursive, historical style. The first staff begins with a treble clef and a common time signature. The music is written in a single system across seven staves. The final staff concludes with a double bar line and the word "Finis" written in a decorative, cursive hand.

