

67:8



à 3.

Soprano. 1.

cantate Domino can ta - te can ta - te  
 can ta - te Do mi no cantate Do mi no can ta -  
 te, can ta - te, can ta - te, can ta te, can ta te :: Do mi  
 no, can ta - te Do mi no can ta - te  
 cantate Do mi no can ta - te, can ta te, can ta te,  
 can ta - te Do mi no can ta - te Do mi no, can  
 ticum canticum novum, can - ticum  
 canticum novum, can  
 ticum novum can ta - te can ta te Do mi no omnis terri

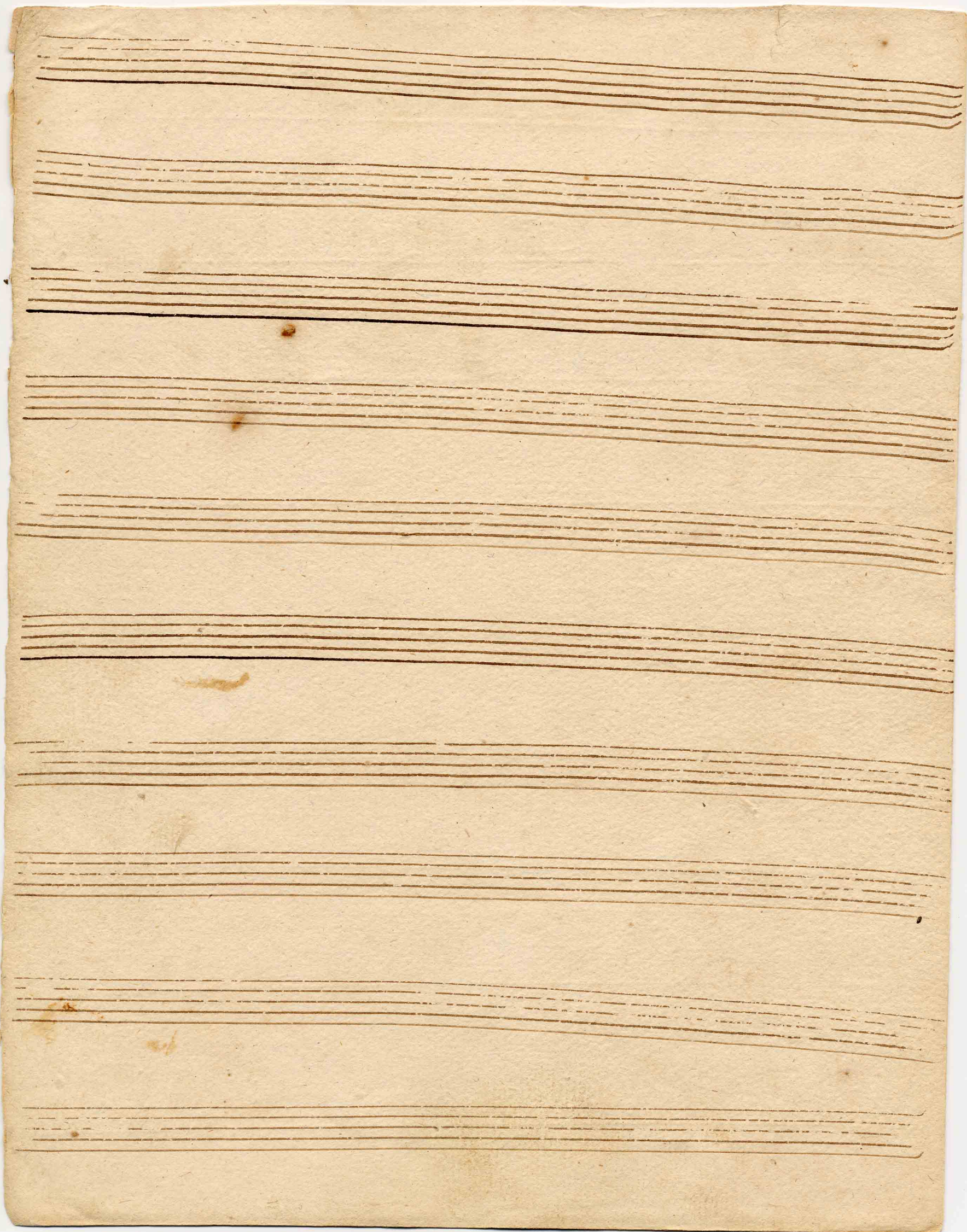


secula seculo = = = = rum A = = =

= = = = mea A men, A = = = = mea A = = = =

= = = = men A = = = = men Amen A men A

men.



a 3.

Soprano 2.<sup>da</sup>

2.

Cantate Domino canta - - - - - te can,

ta - te canta - - - - - te Domino, cantate can,

tate Domino cantate Domino canta - - - - - te,

canta - - - - - te Domino, canta - - - - -

- te canta - te, canta - - - - - te Domino, cantate, cantate, cantate

Domino canta = = = = = te Domi,

no, canta = te Domino can = = = = =

= ticum canticum no - vum canticum canticum novum, can = = = = =

= ticum no - vum can = = = = =

= ticum no - vum, canta = = te cantate Domino omnis terra

Cantate. Basso. Annunciate. Populi

In omni<sup>2</sup>bus populis

mirabi = lia e = jus, mirabi = lia e jus.

solo:

Quoniam ma = gnus Dominus et laudabilis et lauda =

= bilis ni = mis ter = ribilis est, Super om

nes De = os. terribilis est, terribilis est super om =

nes De os, super om = nes De os, Super om =

a 3. adag.

alleg.

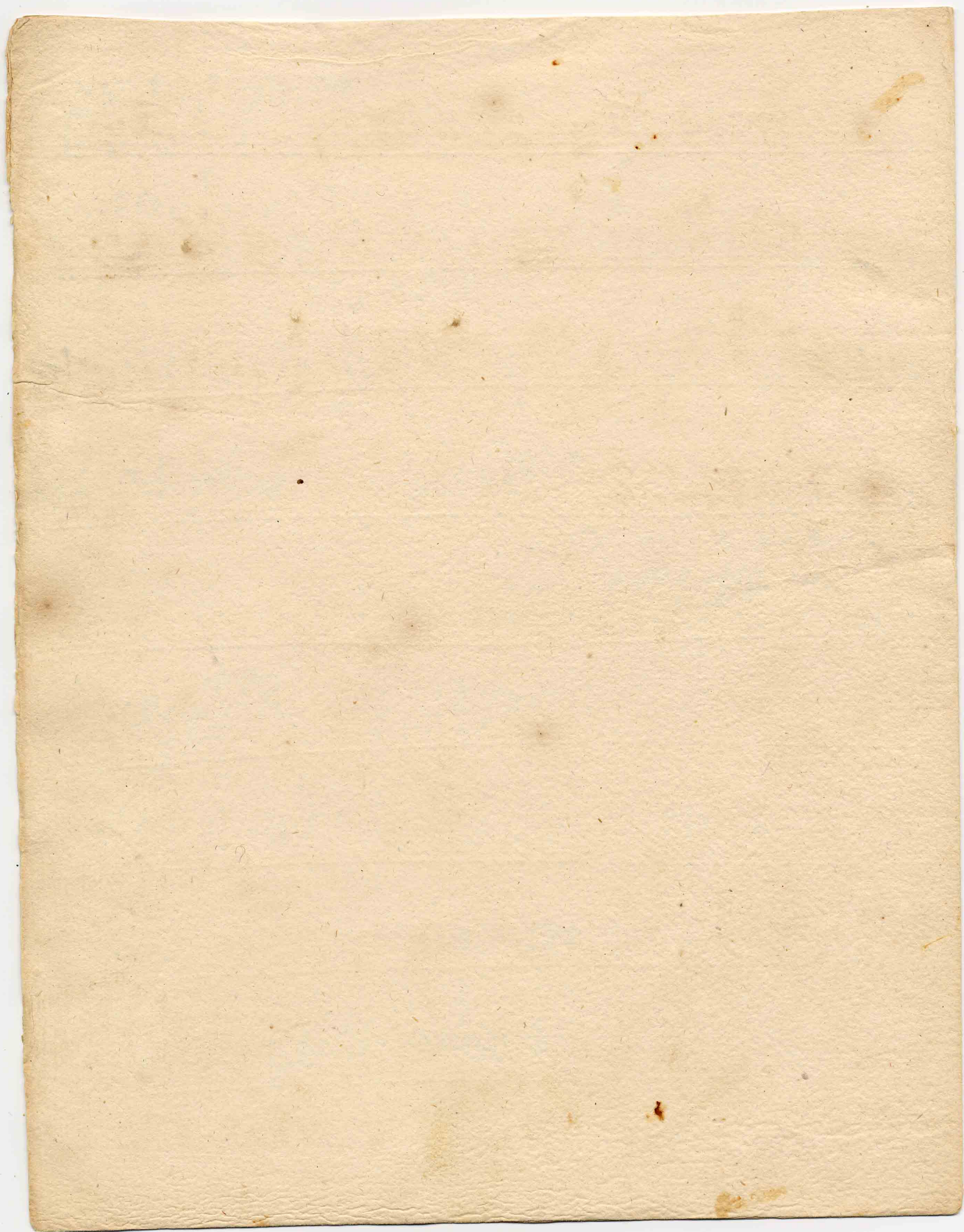
nes De os. Gloria Patri et Filio & Spiritui Sancto. Sicut

erat in principio, et nunc et nunc et nunc & Semper. et in Se-cu-la Se-cu-

lo = rum A = men.

A handwritten musical score on aged, yellowed paper. The score consists of four staves of music, each with a treble clef and a key signature of one sharp (F#). The lyrics are written in Latin and are aligned with the notes. The first staff begins with the word "A" and ends with "A = =". The second staff continues with "men, A = =" and "men et in secula secula = = =". The third staff has "rum A = men A = = =". The fourth staff concludes with "men A men A . men A men." followed by a double bar line. The paper shows signs of age, including some staining and a slightly uneven texture.

A = =  
men, A = =  
men et in secula secula = = =  
rum A = men A = = =  
men A men A . men A men.

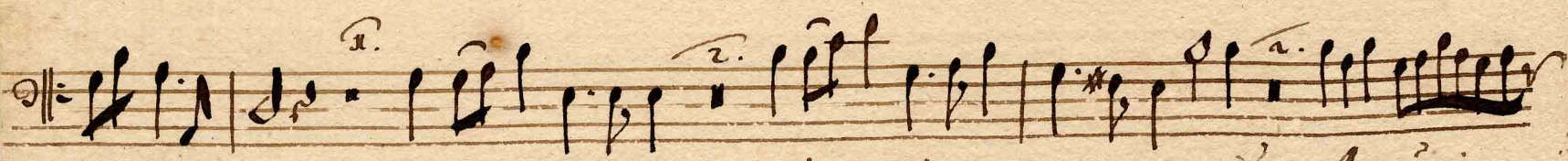








ta - te canta



te Domino et benedicite & benedicite nomini ejus. Annũaria =



te annũaria = te, di e in diem



salũtari e - jus, salũta - ri ejus. Annũnciate. Sopr. 1  
à 3. 48.



In omnibꝫ popũlis mira bi - lia ejus mirabi -



lia e - jus. Leoniam. Sopr. 2. Gloria patri et filio, et Spi:



ritũi San - cto. Alleg. Sicut erat in principio & nũc & nũc et nũc et nũc et sepe



et in secula seculo - rum A =



men A - men A - men A = men et in



Secula Seculo = = = = = rum A = = = = = men et in



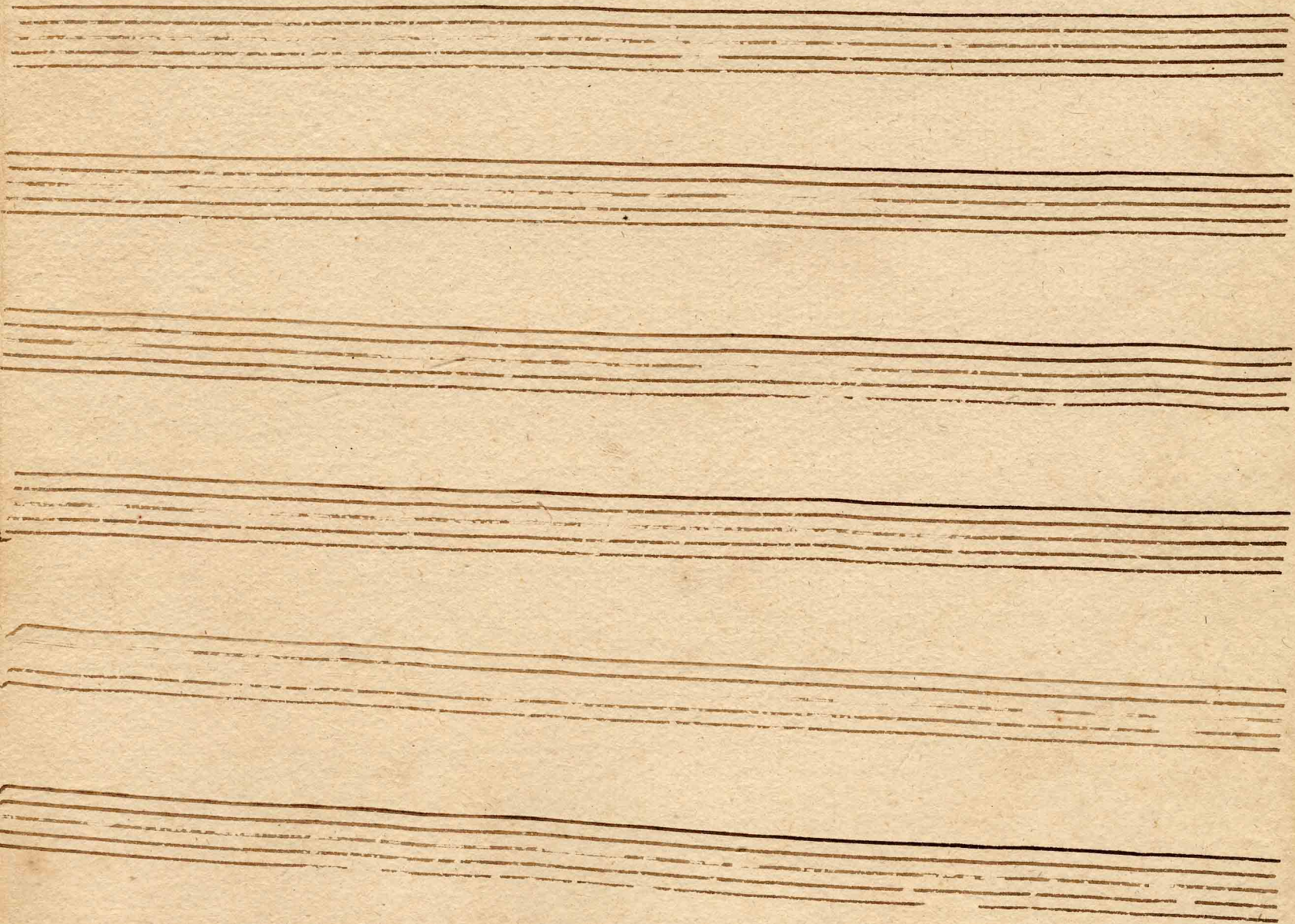
secula Seculo = = = = = ru A men A = = = = = men A

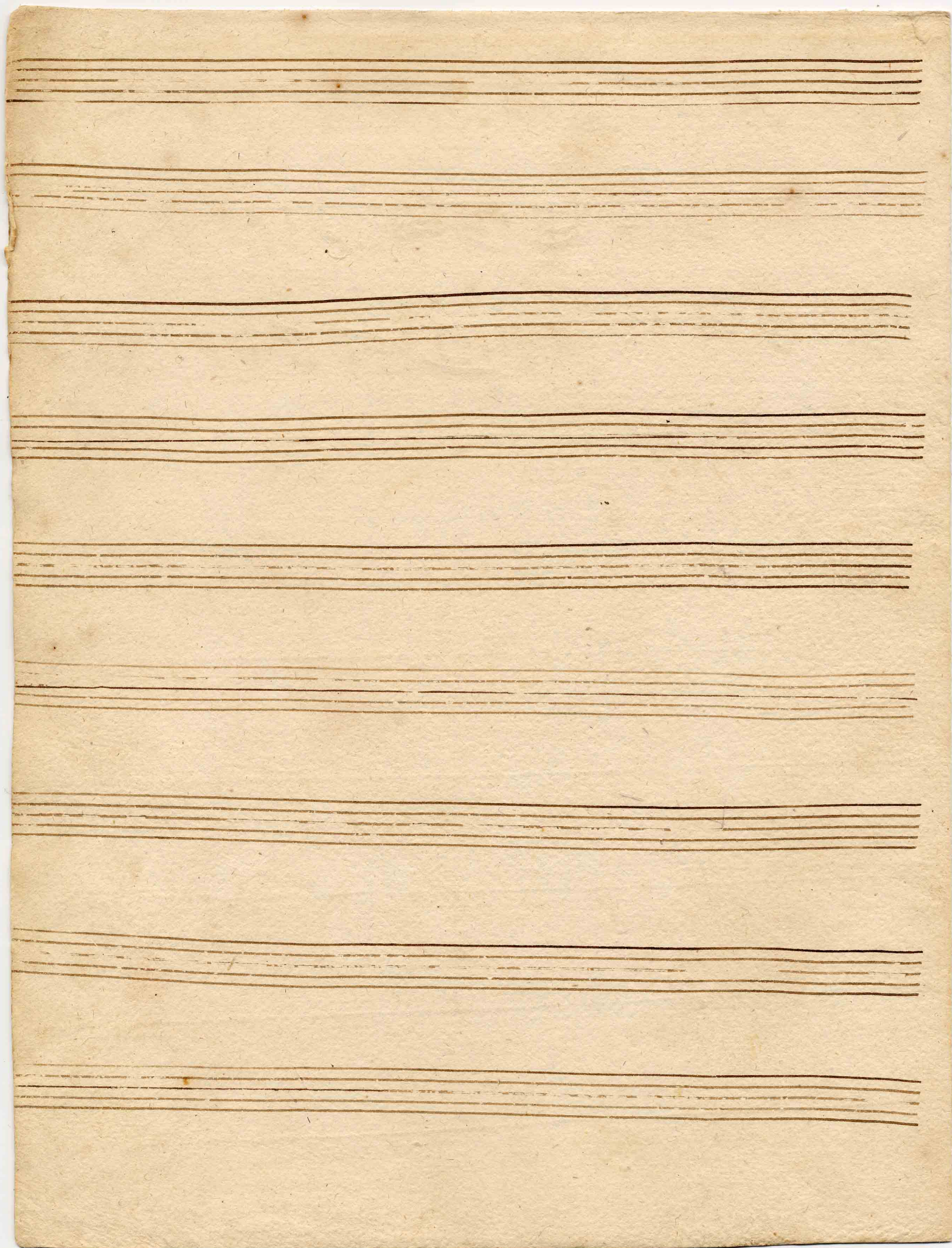


men A men. A = = = = =



men A men A = men A men.





*Cantate Domino. a 3.*

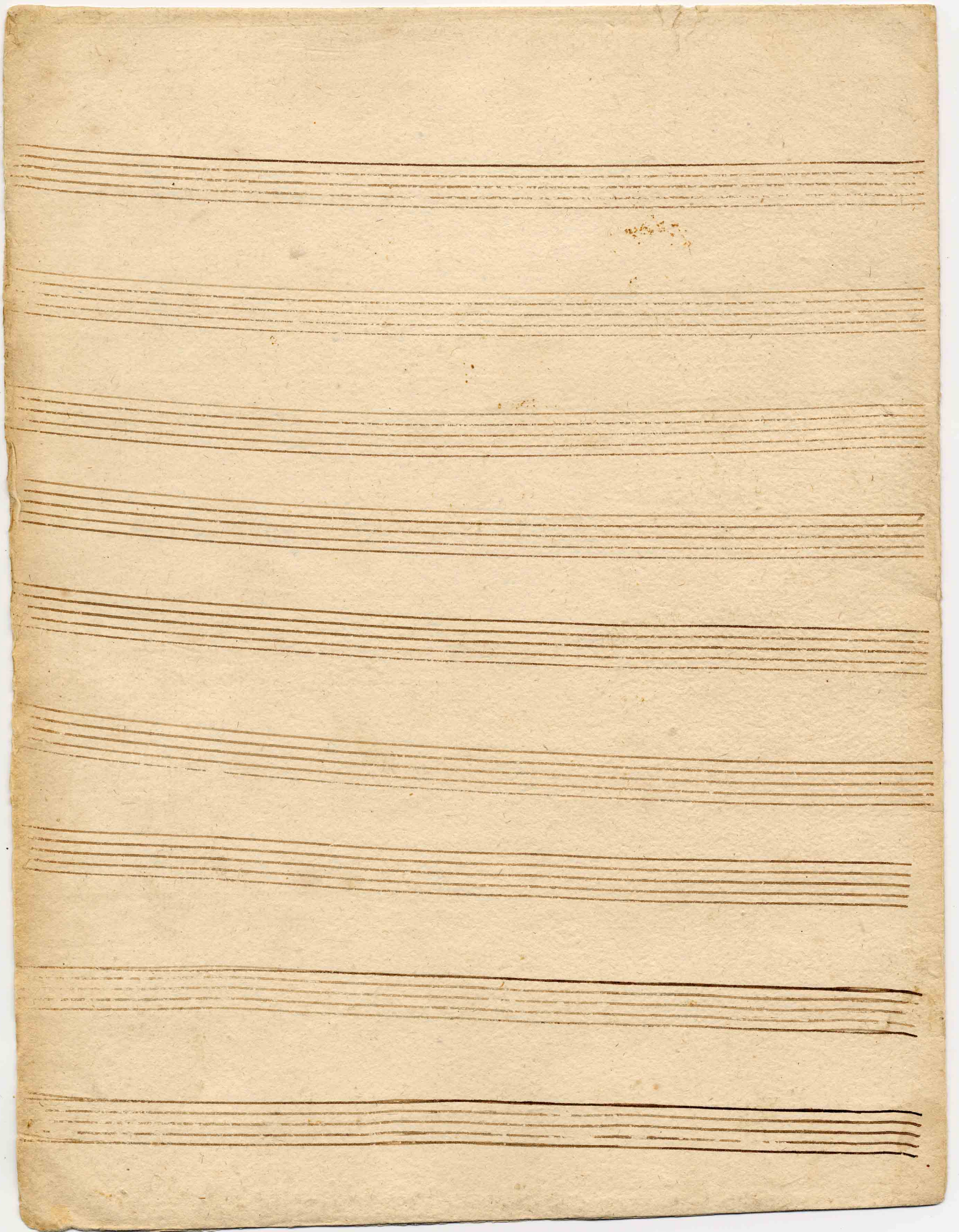
*Organon.*

*Cantate*

*Cantate. Basso.*









Vokalismusik. handsch.

94.

67:8

Cantate Domino canticum novum

a  
Soprano  
u.  
Basso Voice

e  
Organo [Praeludie]



4 00

