

Per tenebras ad lucem (Durch Nacht zum Licht)

Pauken.

in C u. F

1. Theil.

Andante molto

Tuba et Trompa

G. Bauchen ecken

Tuben:

60

in C. G.

Solo

Allegro vivace.

70

15 minuter

Lustiger Tempo

Solo

Andante molto

3/4

23

in D. G.

Trompete etc.

mf

A

2

Andante moderato

Handwritten musical notation on a single staff, bass clef, 3/2 time signature. It features a whole note chord, a double bar line, and another whole note chord. The number '21.' is written below the staff.

3

Handwritten musical notation on a single staff, bass clef, common time signature. It includes the word 'Grave' above the staff and the number '27' below. A section is marked 'React. No. 4' with a blue '4' and ends with the word 'allucina'.

Handwritten musical notation on a single staff, bass clef, 2/4 time signature. It includes the words 'Finis Allegro' and 'in D. m. A.' above the staff, and the number '20' below. A blue 'B' is written above the staff.

Handwritten musical notation on a single staff, bass clef, 2/4 time signature. It features a series of chords and notes, with a blue '2.' written below the staff.

Handwritten musical notation on a single staff, bass clef, 2/4 time signature. It includes the word 'Solo' above the staff and a series of notes and rests.

Handwritten musical notation on a single staff, bass clef, 2/4 time signature. It features a series of notes and rests, with a blue 'ff' written above the staff.

1:5

Handwritten musical notation on a single staff, bass clef, 3/2 time signature. It includes the word 'Duetto' above the staff and the number '25' below. A section is marked 'React. per sopr. in C. G.' with a blue '6' below.

Handwritten musical notation on a single staff, bass clef, 3/2 time signature. It features a series of notes and rests.

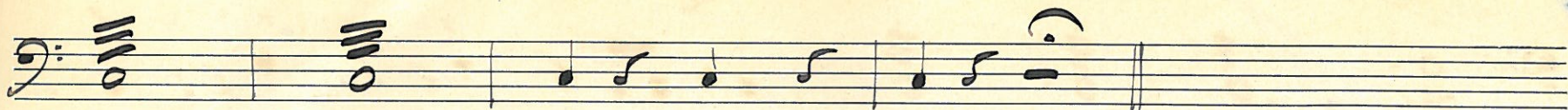
N:6

Handwritten musical notation on a single staff, bass clef, common time signature. It includes the word 'Chor' above the staff and the word 'Mezzo' above the staff.

Handwritten musical notation on a single staff, bass clef, common time signature. It features a series of notes and rests.

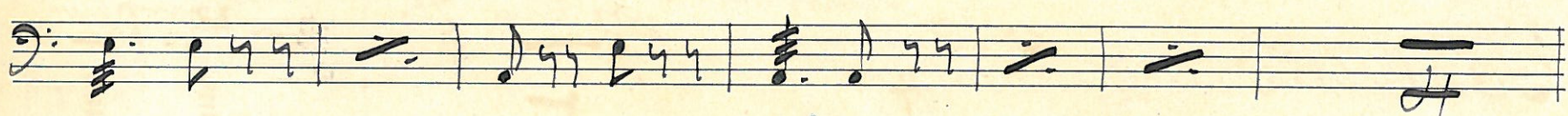
Handwritten musical notation on a single staff, bass clef, common time signature. It includes a blue 'p' below the staff and a blue 'n' above the staff.

Handwritten musical notation on a single staff, bass clef, common time signature. It includes a blue 'mp' below the staff and a blue 'f' below the staff.



N^o 7
Recitativo *molto molto* *fin molto*

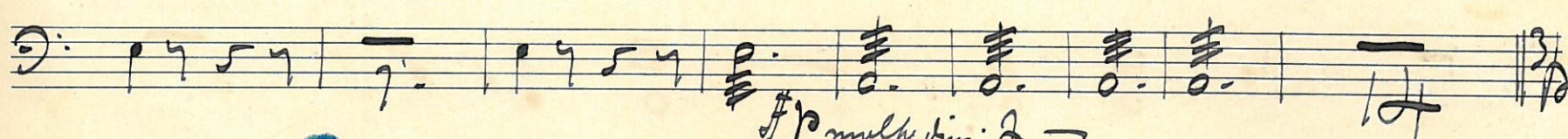
Allegro *Choro Vivace*



A *Solo*



Solo

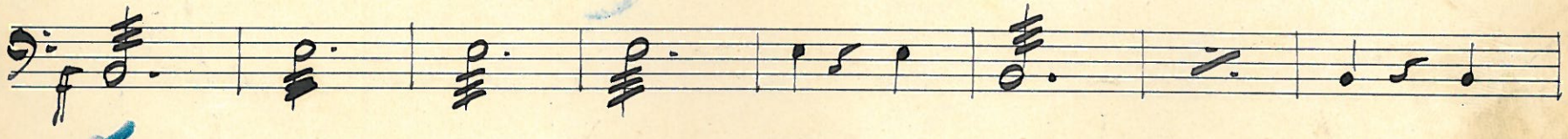


N^o 8 *Andante molto*

Noah u. seine Lahare

N^o 9 *Choro Allegro. in E u H*

Recit. *13*



2. *3.*

G

Handwritten musical notation on a single staff, featuring a bass clef, a key signature of one sharp (F#), and a 4/4 time signature. The notation includes several measures with notes and rests.

Handwritten musical notation on a single staff, continuing the piece with a bass clef and a 4/4 time signature.

Nr 10

Section titled "Recitativo" with a bass clef and a common time signature (C). The notation includes a fermata over a measure and the number "18" written below the staff.

Nr 11

Section titled "Schlusschor" with a bass clef and a 9/4 time signature. It includes the instruction "Molto marcato in C. F." and "Trompeten" with notes for two trumpets.

M

Handwritten musical notation on a single staff, featuring a bass clef and a key signature of one sharp (F#). The notation includes notes, rests, and dynamic markings.

Handwritten musical notation on a single staff, continuing the piece with a bass clef and a key signature of one sharp (F#).

Handwritten musical notation on a single staff, featuring a bass clef and a key signature of one sharp (F#). The notation includes notes, rests, and dynamic markings.

Handwritten musical notation on a single staff, continuing the piece with a bass clef and a key signature of one sharp (F#).

K

Handwritten musical notation on a single staff, featuring a bass clef and a key signature of one sharp (F#). The notation includes notes, rests, and dynamic markings.

Handwritten musical notation on a single staff, continuing the piece with a bass clef and a key signature of one sharp (F#).

35 Nr

Ende 1. Teil.

Two empty musical staves at the bottom of the page.

Nr 12 2. Teil

Leskennka.
in E. A.

Handwritten musical notation on a single staff, starting with a bass clef and a common time signature. It includes notes, rests, and dynamic markings such as *mp*.

Handwritten musical notation on a single staff, continuing the piece with notes and rests.

Handwritten musical notation on a single staff, featuring notes and rests.

Handwritten musical notation on a single staff, labeled **Choral** in the beginning. It includes notes and rests.

Nr 13 Recit. *mp*
Nr 14 Largo quartett. *Andante*
Nr 15 Recit. Moderato *Andante*

Handwritten musical notation on a single staff, including notes and rests.

Handwritten musical notation on a single staff, labeled **Zwischenspiel** and **Chor der Engel**. It includes notes and rests.

Handwritten musical notation on a single staff, featuring notes and rests.

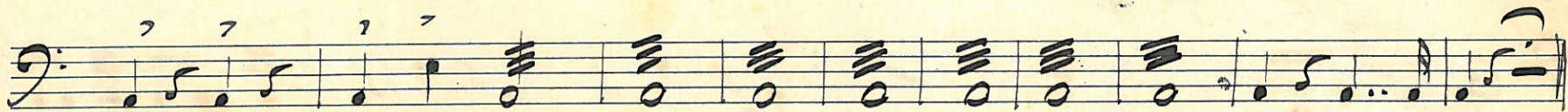
Handwritten musical notation on a single staff, including notes and rests.

Handwritten musical notation on a single staff, labeled **Chor.** and **Pastoral.** It includes notes and rests.

Handwritten musical notation on a single staff, including notes and rests.

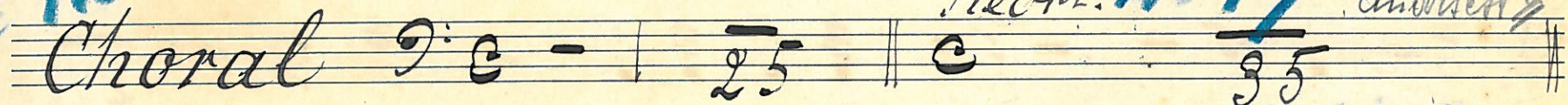
Handwritten musical notation on a single staff, including notes and rests.

G

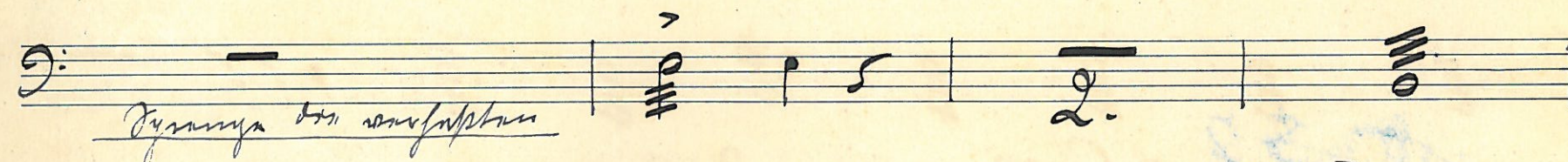
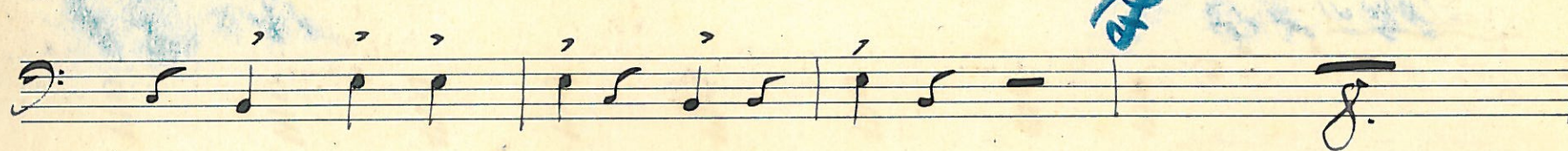
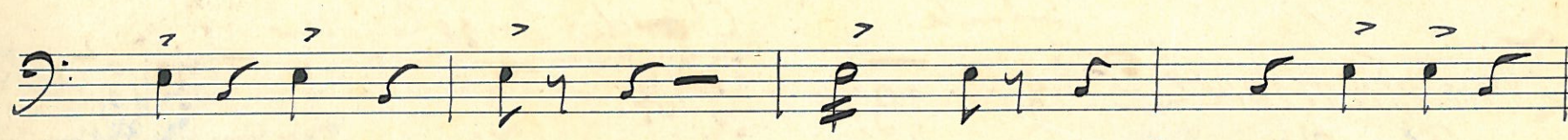
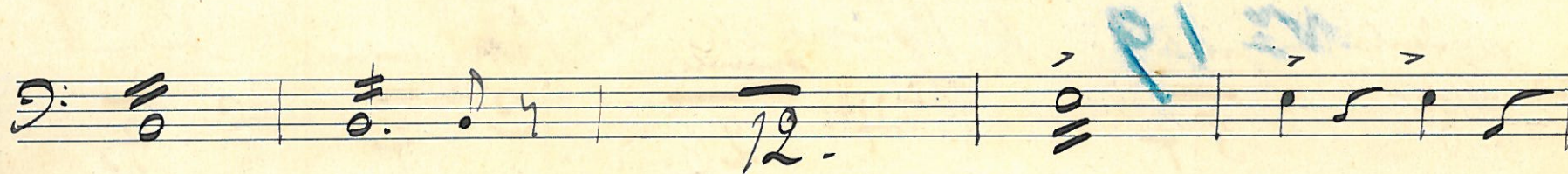
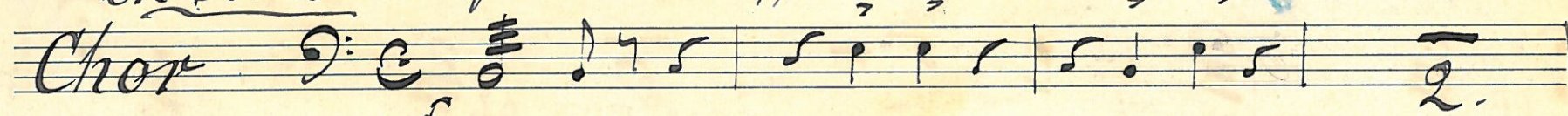


No 16

Præm. No 17 Anordlett G.

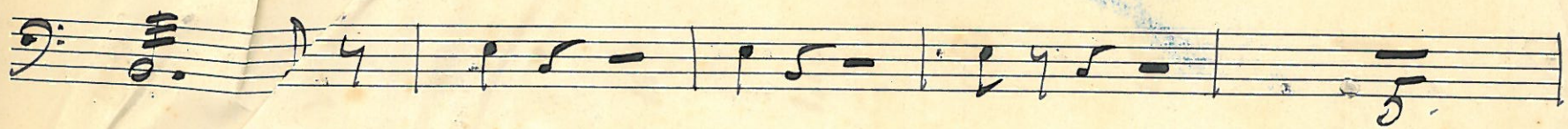


in Esu B Allegro ma non troppo.



Pyramya bei wasserspringen





N^o 18
 Recitativo $\text{F} \# \text{C}$ *Andante* 13 \parallel *Adagio* $\frac{3}{2}$ 48 27.

Recit. $\text{F} \# \text{C}$ 12

N^o 19
 Zwischenpiel. $\text{F} \# \text{C}$ *Adagio* 74

Soloquartett $\text{F} \# \text{C}$ 27

N^o 20
 Choral $\text{F} \# \text{C}$ 29. **Recit. No. 21** $\text{F} \# \text{C}$ 27.

Engelchor $\text{F} \# \frac{3}{2}$ 28

N^o 22 in D. *Allegro non troppo.*
 Schlusschor. $\text{F} \# \text{C}$ 12

12.

16

Handwritten musical notation on a single staff, featuring a bass clef, a common time signature, and various rhythmic values including eighth and sixteenth notes.

Handwritten musical notation on a single staff, featuring a bass clef, a common time signature, and various rhythmic values including eighth and sixteenth notes.

Handwritten musical notation on a single staff, featuring a bass clef, a common time signature, and various rhythmic values including eighth and sixteenth notes.

Handwritten musical notation on a single staff, featuring a bass clef, a common time signature, and various rhythmic values including eighth and sixteenth notes.

Handwritten musical notation on a single staff, featuring a bass clef, a common time signature, and various rhythmic values including eighth and sixteenth notes.

Tempo primo

Tempo primo

Handwritten musical notation on a single staff, featuring a bass clef, a common time signature, and various rhythmic values including eighth and sixteenth notes.

Handwritten musical notation on a single staff, featuring a bass clef, a common time signature, and various rhythmic values including eighth and sixteenth notes.

Handwritten musical notation on a single staff, featuring a bass clef, a common time signature, and various rhythmic values including eighth and sixteenth notes.

Handwritten musical notation on a single staff, featuring a bass clef, a common time signature, and various rhythmic values including eighth and sixteenth notes.

And. less

Handwritten musical notation on a single staff, featuring a bass clef, a common time signature, and various rhythmic values including eighth and sixteenth notes.

Handwritten musical notation on a single staff, featuring a bass clef, a common time signature, and various rhythmic values including eighth and sixteenth notes.

Empty musical staves at the bottom of the page.