

TIMBALLE.



OUVERTURE

Largo.

DI TORVALDO E DORLISKA.

First musical staff with bass clef, 2/4 time signature, and notes.

Second musical staff with bass clef, notes, and a measure number '6' above the staff.

Third musical staff with bass clef, notes, and measure numbers '1' and '11' above the staff.

Fourth musical staff with bass clef, notes, and the tempo change 'All° Vivace.' above the staff.

Fifth musical staff with bass clef, notes, and a slur over a group of notes.

Sixth musical staff with bass clef, notes, and a slur over a group of notes.

Seventh musical staff with bass clef, notes, and a measure number '3' above the staff.

Eighth musical staff with bass clef, notes, and measure numbers '2' and '8' above the staff.

Ninth musical staff with bass clef, notes, and a measure number '55' above the staff.

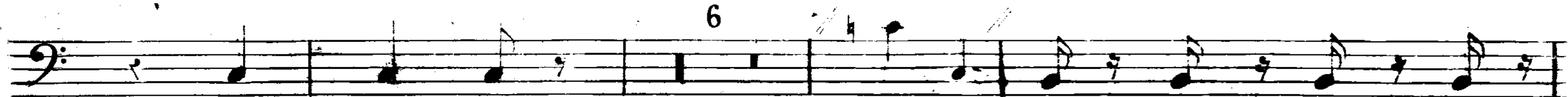
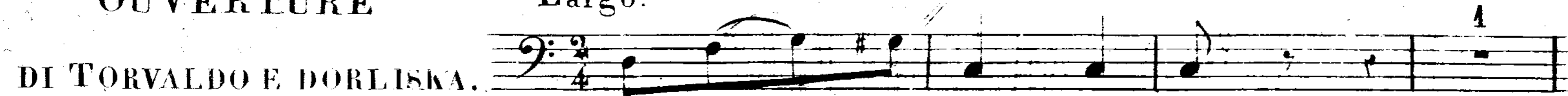
GROSSE CAISSE.



OUVERTURE

Largo.

DI TORVALDO E DORLISKA.



All<sup>o</sup> Vivace.

