

# Variations on a Ground

Ground Bass by Samuel Thomson

**Cello**  $\text{♩} = 70$

7

13

19

25

31

37

43

49

55

# Minuet and Musette

♩=120

10

19

27

35

44

53

61

70

78

86

95

104 *rit...* ♩=110

112

121

129

137

143

150

156

163

171

177

183

189

195

204

213

221

230

239

247

# Courante

♩ = 114

7

13

18

24

30

35

40

46

51

58

63

68

73

79

84

90

95

102

107

112

117

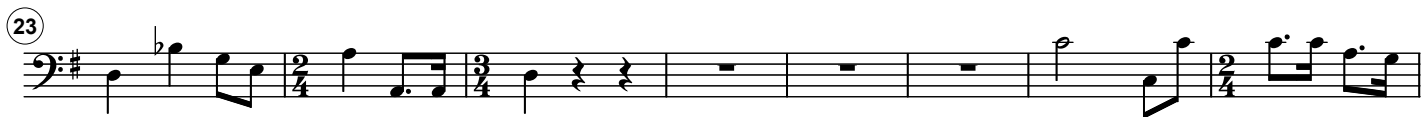
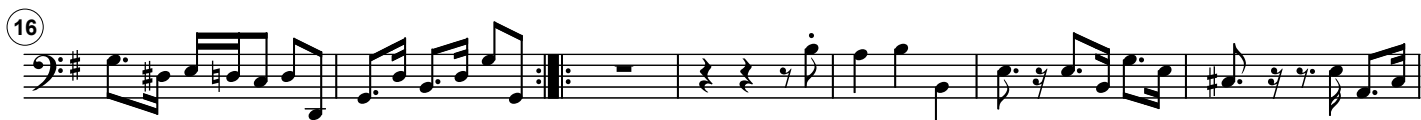
123

128

*rall....*

# Sarabande

♩ = 70



# Gigue


♩ = 110



94



102 *poco rit.*



110 *A tempo*



117



125



133



141

