

PARTITURA DI
CORRENTI, E BALLETTI

Per Sonare nella Spinetta Leuto, ò Tiorba;

Ouero Violino, e Violone,

col Secondo Violino à Beneplacito.

DEDICATE

AL MOLTO ILLVSTRE ET ECCELLENTISSIMO

SIGNOR DOTTOR
MARIO MARIANI

DA

MAVRITIO CAZZATI

Mastro di Capella in S. Petronio di Bologna,

& Accademico Eccitato.

Opera . X X X.

Con priuileggio.



IN BOLOGNA, MDCLXII.

per Antonio Pisarri,

Con Licenza de' Superiori.

A.

MOLTO ILLVSTRE
ET ECCELLENTISSIMO SIG.
PATRONE OSSERVANDISSIMO.



Niun'altro, meglio, che à V. S. Eccellentissima era douuta la dedicatoria di queste mie Musiche Correnti: la Cognizione, che ella tiene dell' arte della Musica era vn motiuo, che per se stesso mi persuadeua ad offerirgliela, quando il desiderio di palesarmi in fatti parziale al di lei merito non me ne hauesse soauemente sospinto. Spero che non isdegnarà d' accettarle; e con occhio benigno trascorrerle, qual' ora li studij più serij di quella Filosofia, in cui poco prima hà preso la meritata laurea, richiedendo il douuto sollieuo, glie ne porgeranno occasione; Stimerassi honorata la Musica, se potrà godere l' ombra di quel Lauro, che ne suoi più verdi germogli, dimostra di douer crescere al pari di quella gran Pianta che nelle famose Virtudi dell' Eccellentissimo Signor Andrea di B. M. Padre di V. S. Eccellentissima hà diffuso pe l' Mondo rami di Gloria: la di lei conosciuta modestia mi persuade a tacere, ciò che il merito di quel gran Virtuoso richiede, e però frenando fra i termini d' vn diuoto silenzio, quello che ne meno potrei con eloquente facondia esprimere m'arresto protestandomi.

Di V. S. Molto Illustre & Eccellentissima,

Bologna, li 5 Agosto 1662.

Oblig. Deuotis. Seruit.

Mauritio Cazzati.



Largo.

Musical notation for the first staff, featuring a treble clef, a common time signature 'C', and a key signature of one flat (B-flat). The staff contains a melodic line with various note values and rests, including a fermata over the final note. Trills are indicated above several notes with the letter 't.'. A sharp sign is placed above the final measure.

ALLETTO PRIMO.

Musical notation for the second staff, featuring a bass clef and a common time signature 'C'. The staff contains a melodic line with various note values and rests.

Musical notation for the third staff, featuring a treble clef and a common time signature 'C'. The staff contains a melodic line with various note values and rests, including trills marked with 't.'.

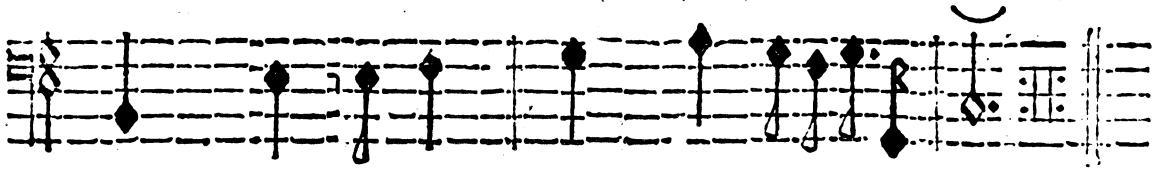
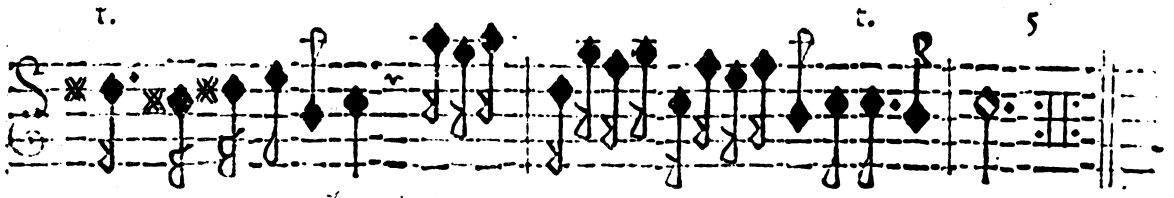
Musical notation for the fourth staff, featuring a bass clef and a common time signature 'C'. The staff contains a melodic line with various note values and rests.

Musical notation for the fifth staff, featuring a treble clef and a common time signature 'C'. The staff contains a melodic line with various note values and rests, including trills marked with 't.'.

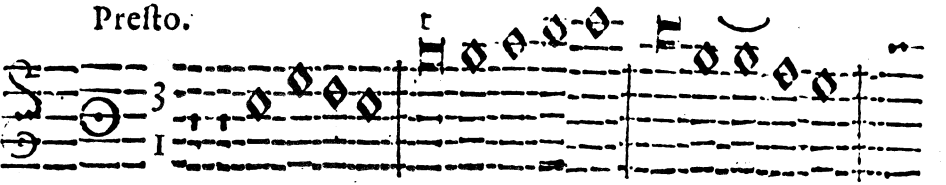
Musical notation for the sixth staff, featuring a bass clef and a common time signature 'C'. The staff contains a melodic line with various note values and rests.

Musical notation for the seventh staff, featuring a treble clef and a common time signature 'C'. The staff contains a melodic line with various note values and rests.

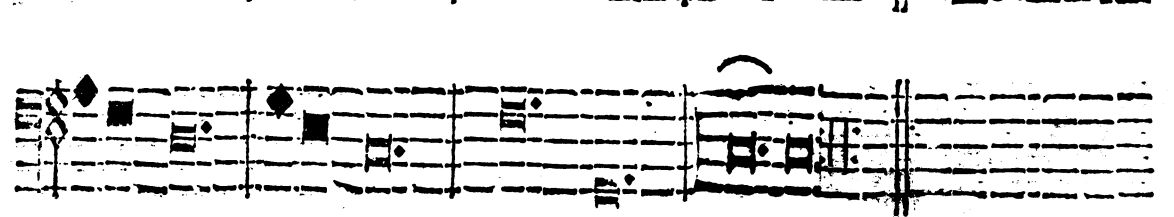
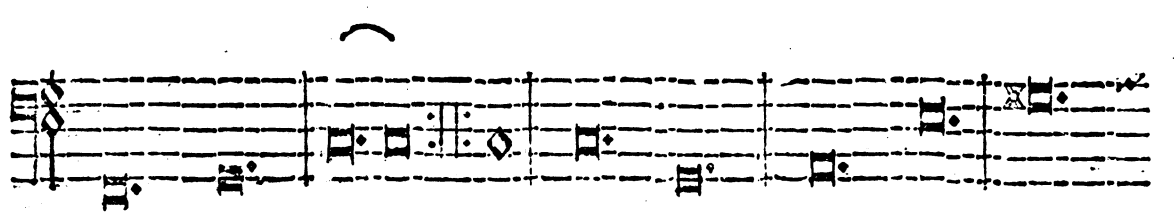
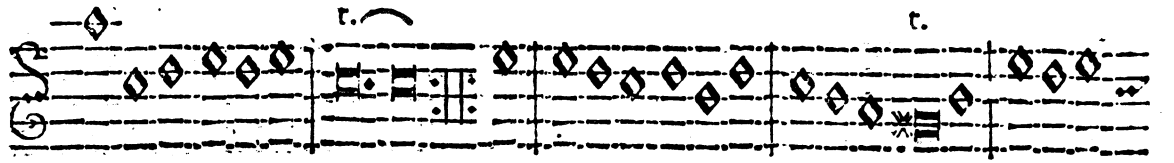
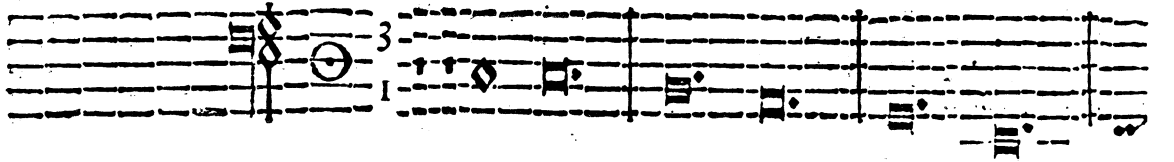
Musical notation for the eighth staff, featuring a bass clef and a common time signature 'C'. The staff contains a melodic line with various note values and rests, including flats indicated by 'b' above the notes.



Presto.



ORRENTI PRIMA.

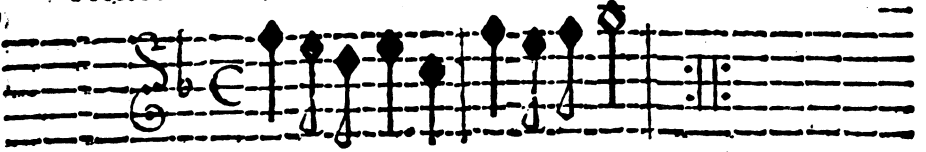


Presto.

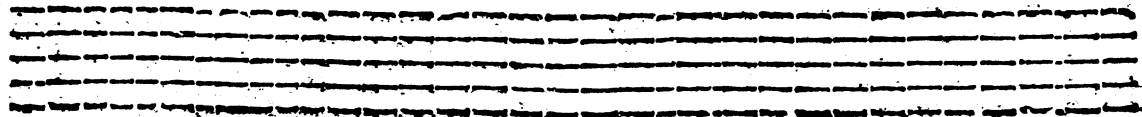
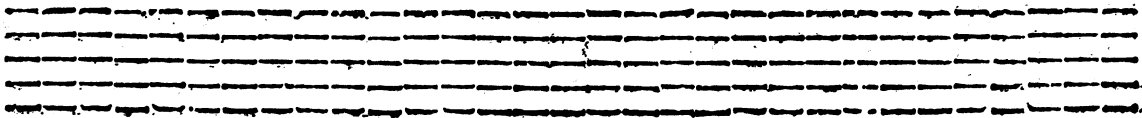
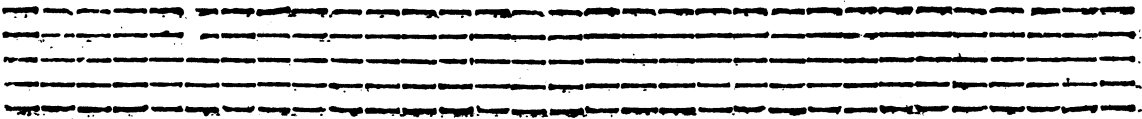
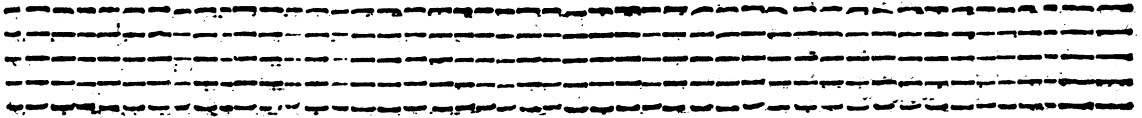
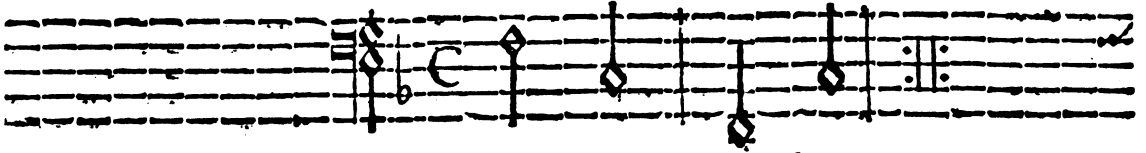
r.

r.

6



ALLET O SECONDO.





Presto.

3
1

ORRENIE SECONDA.

3
1

r.

r.

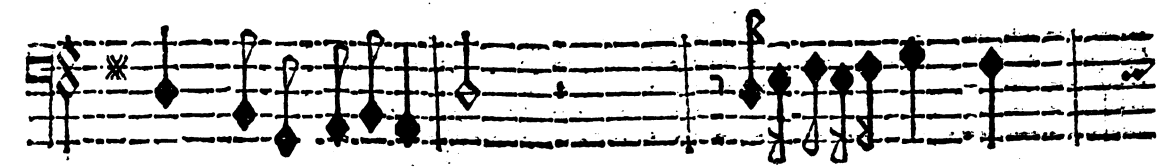
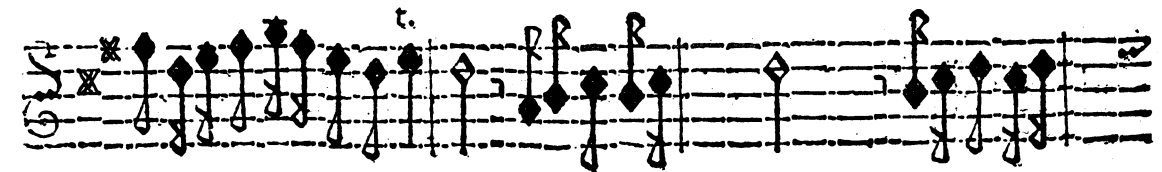
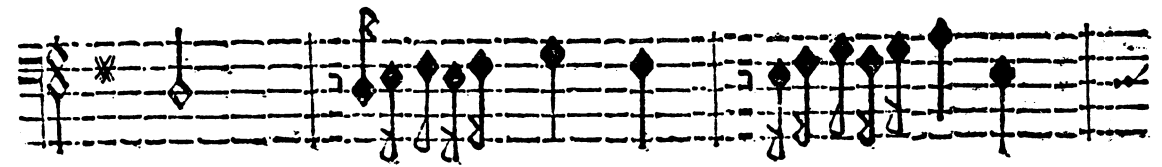
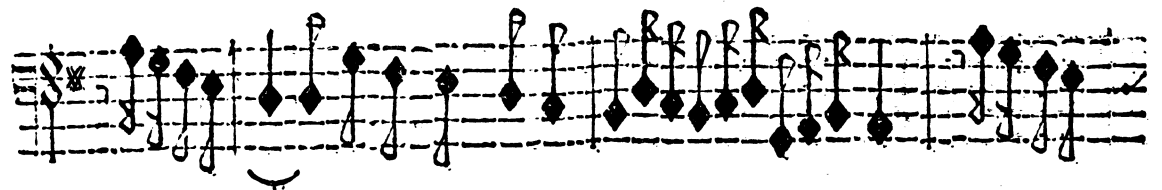


Viuace.

8



BALETTIO TERZO.



r. 9

Presto.

ORRENTE TERZA.

r.



Adagio. t.

t. t. 10 t.

AILETTO QUARTO.

t.

t. t. t.

t. t.

Presto.

t. t. t. t.



ORRINTEQUARTA.

3 4

t. t.

t.



Largo. t.

t. t. t. t. 12

ALLETTO QUINTO.

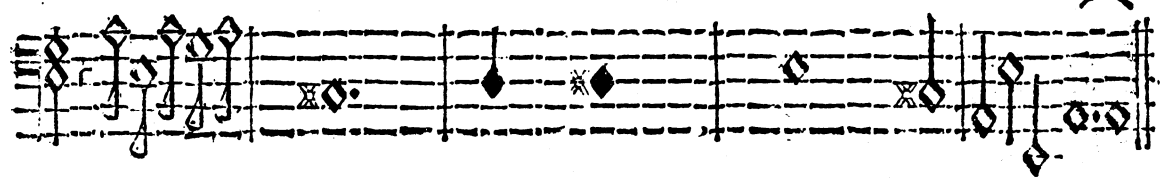
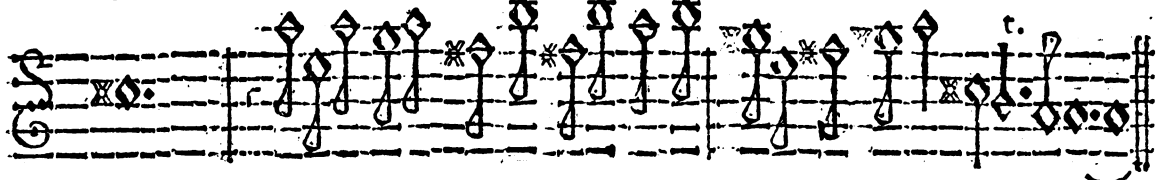
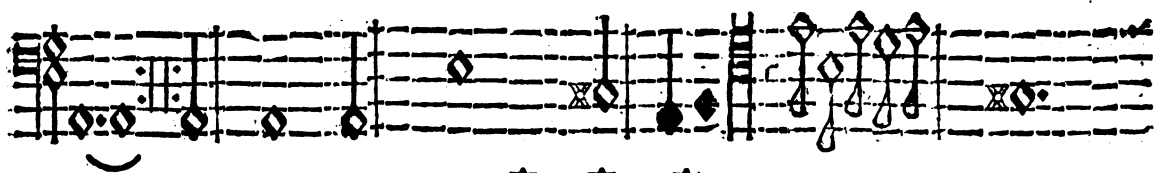
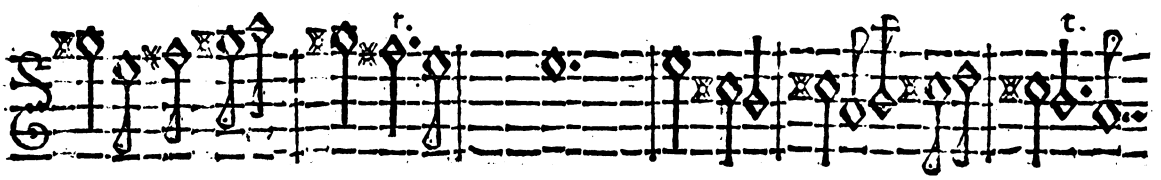
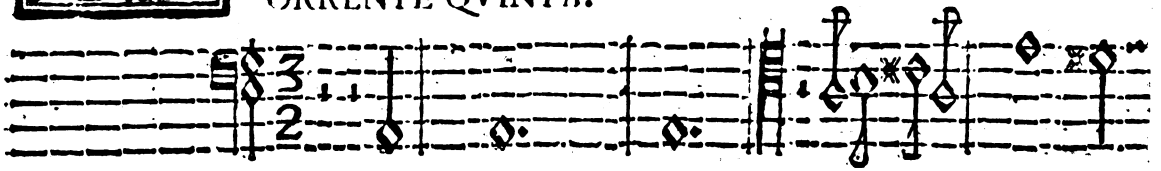
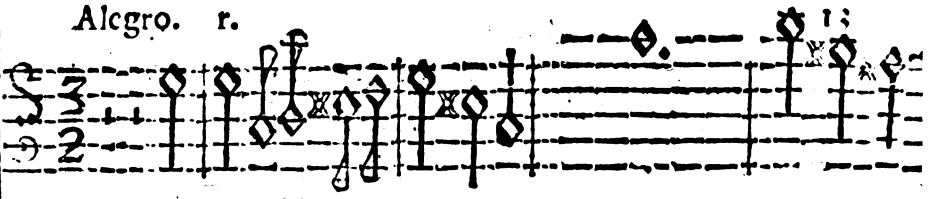
t. t. t.

t. t. t.



Alegro. r.

ORRENTE QVINTA.





Largo. t. t. 14

ALLETTO SESTO.



Preſto.

1 3 15

ORRENTE SESTA.

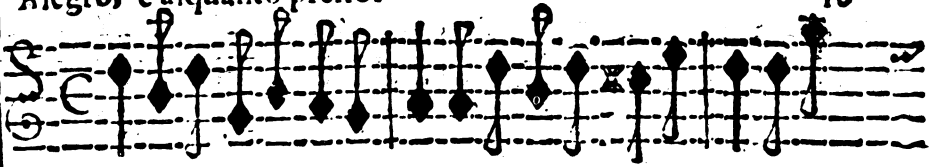
1 3

b. 2

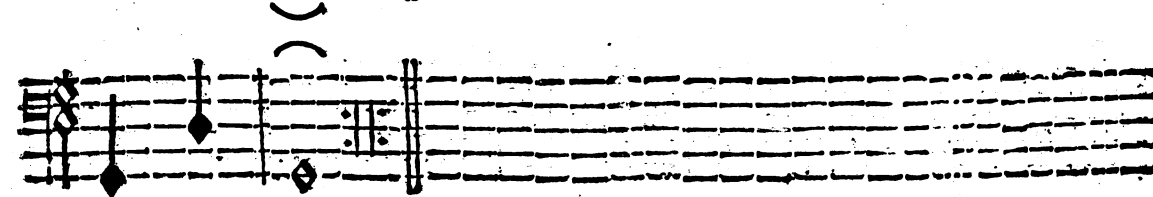
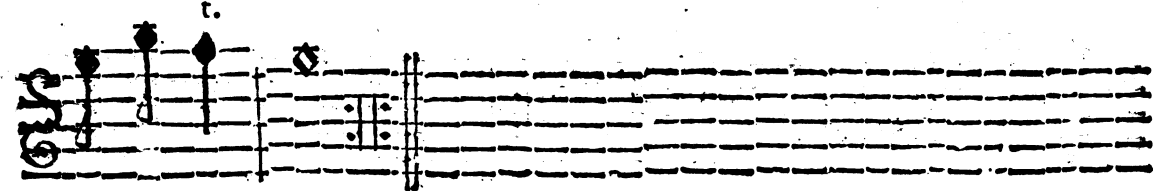
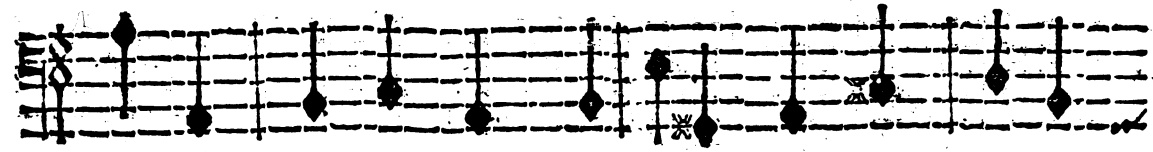
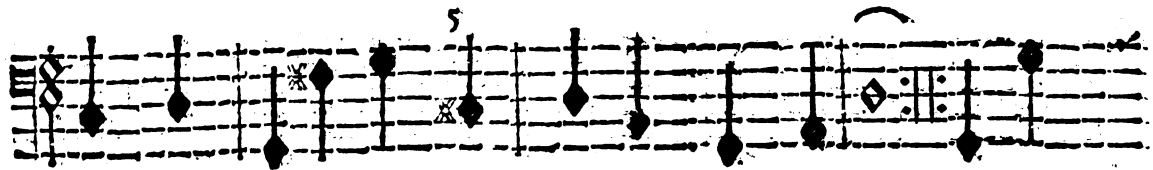
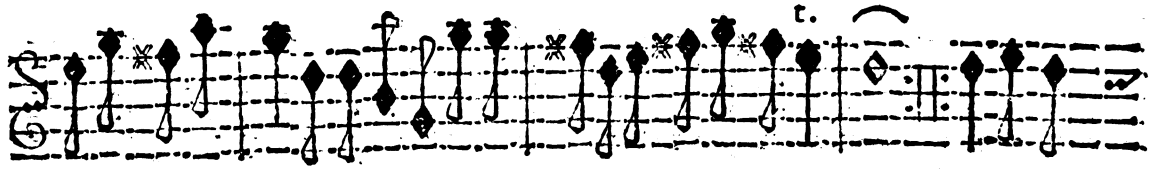


Alegro, e alquanto presto.

16



ALLETTO SETTIMO.





Alegro.

r.

t.

17

ORRENTE SETTIMA.

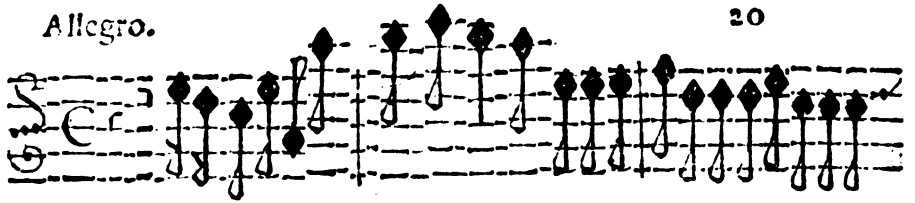


18

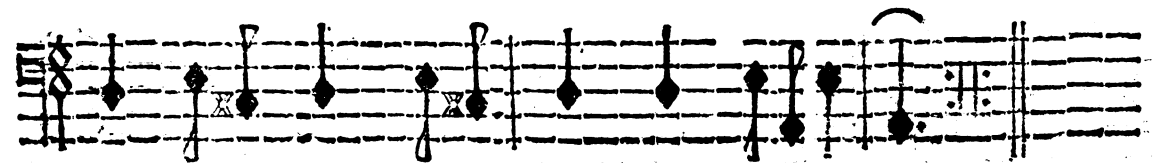
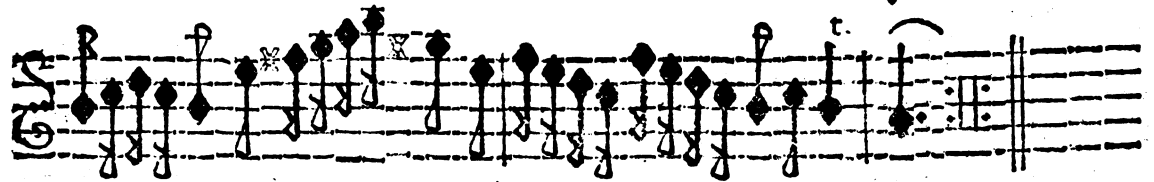
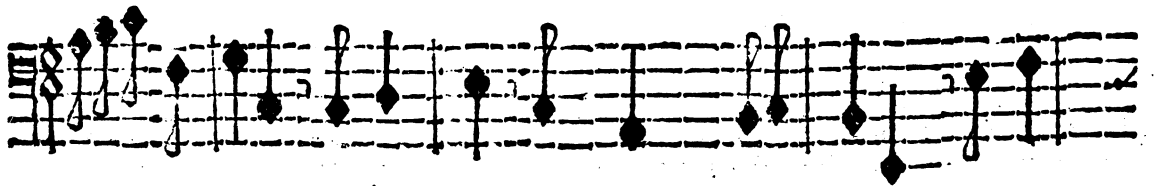
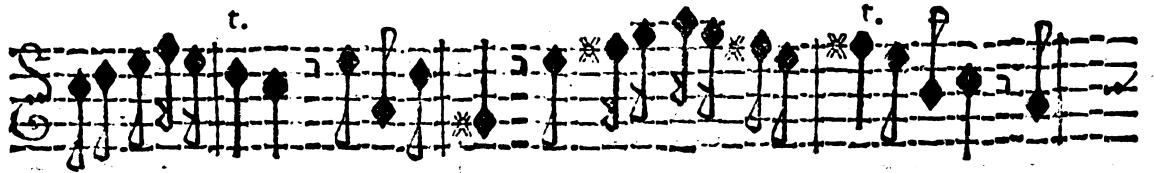
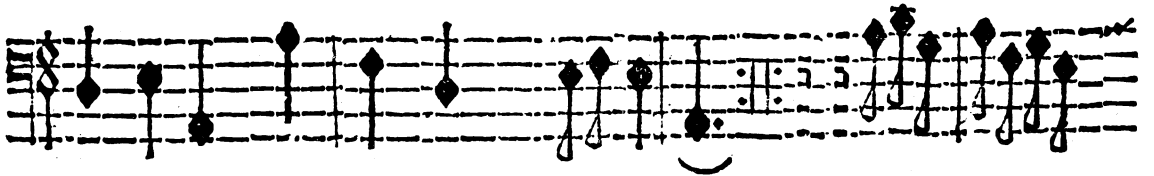
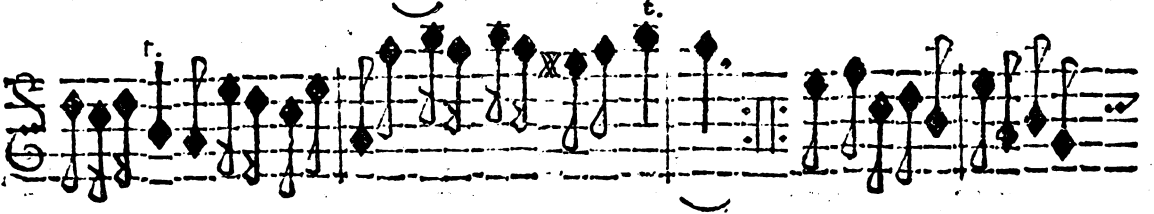
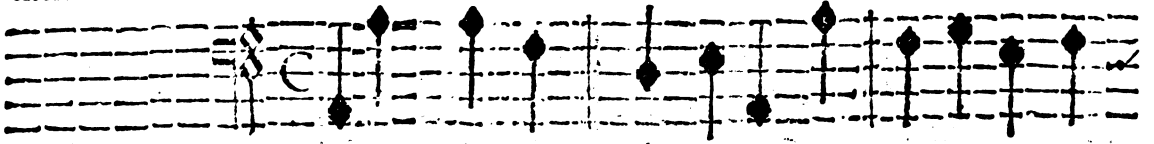
ALLETTO OTTAVO.

Allegro.

20



ALLETO NONO.



C

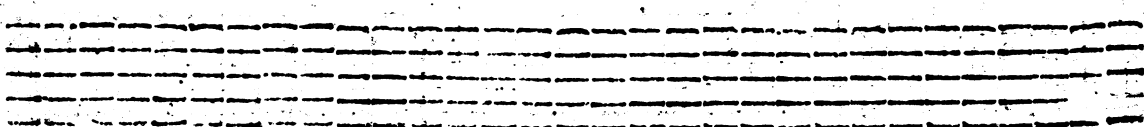
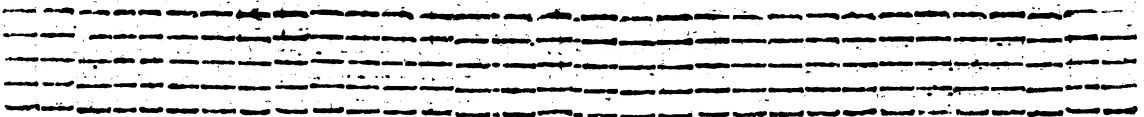
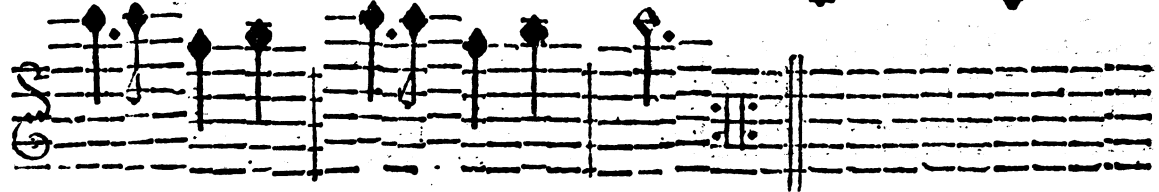
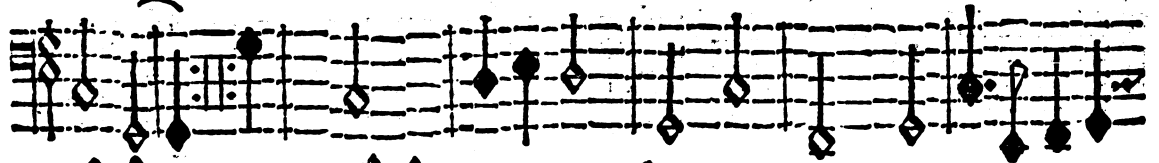
3
4

CORRENTE NONA.

Presto.

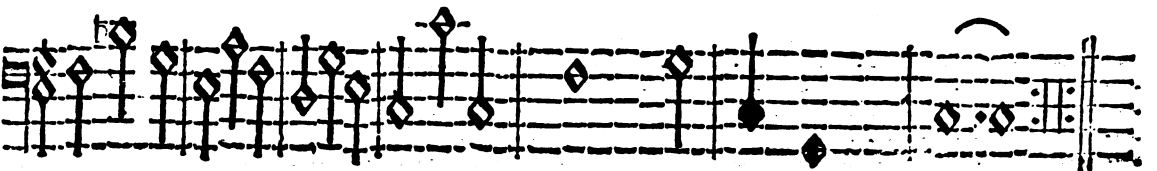
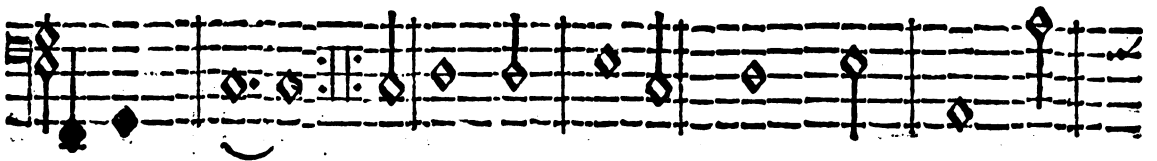
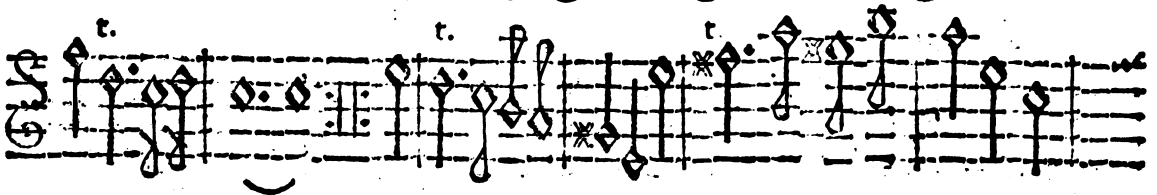
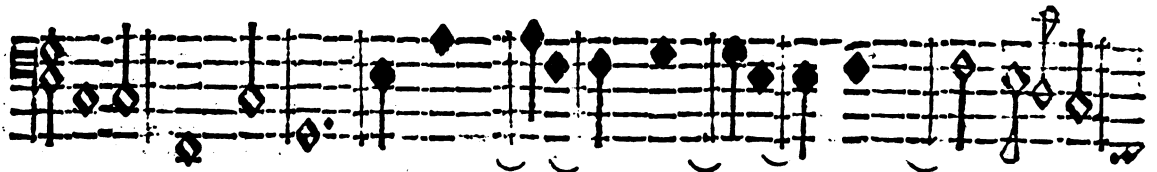
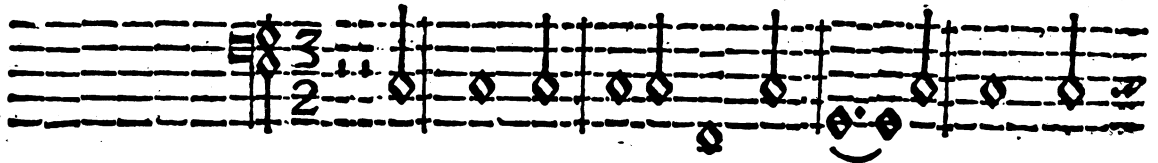


ALETTO DECIMO.





ORRENTE DECIMA.





ALLEITO VNDECIMO.

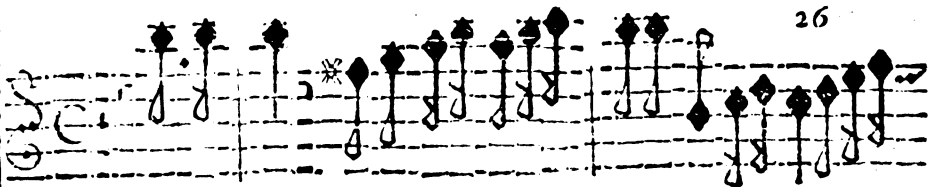


t.

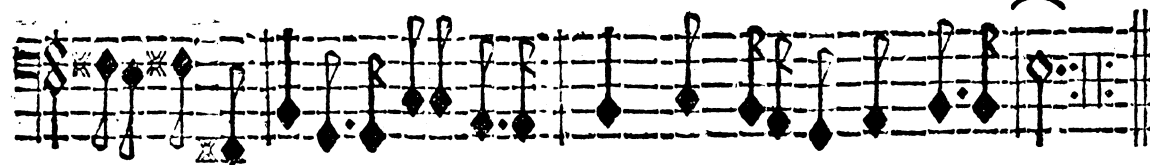
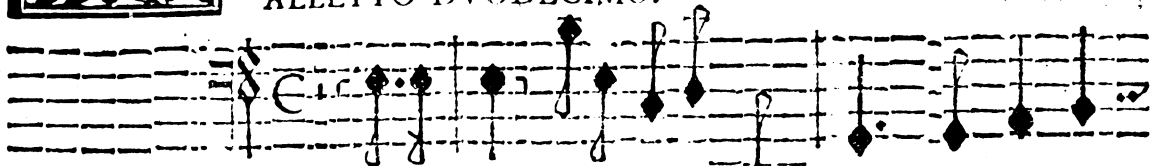
t.

25

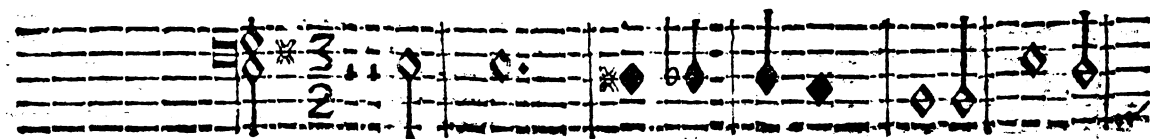
ORRENTE VNDECIMA.



ALLETTO DVODECIMO.

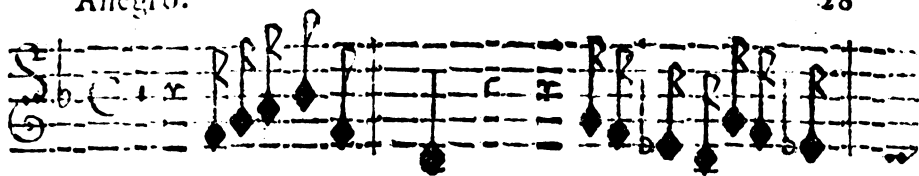


ORRENTE DVODECIMA.

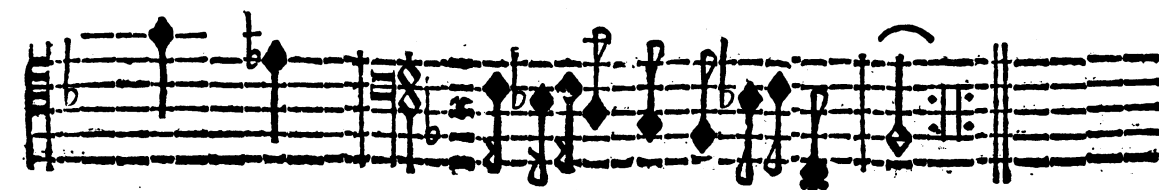
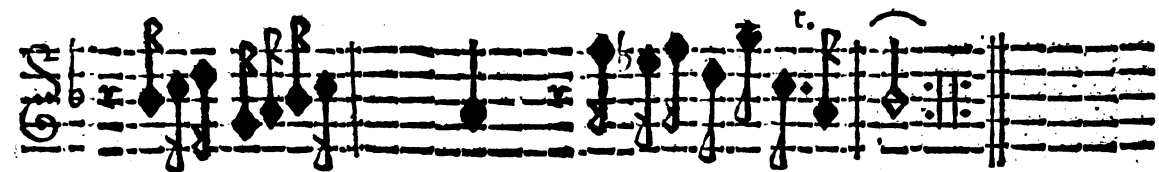
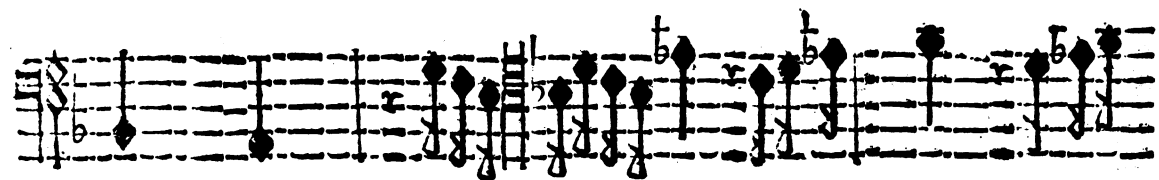
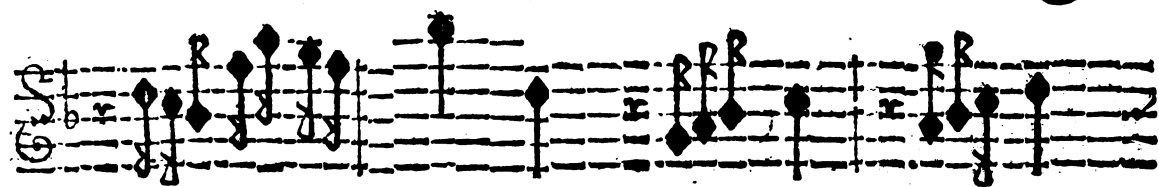
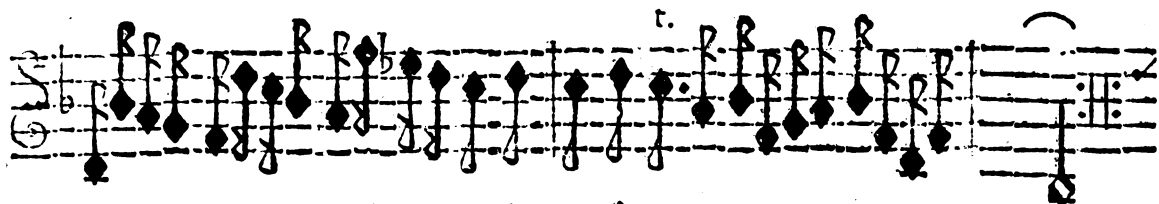
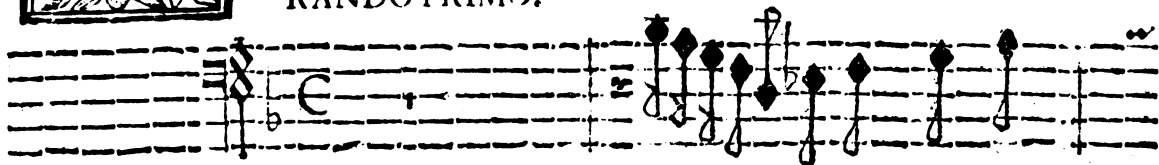


Allegro.

28

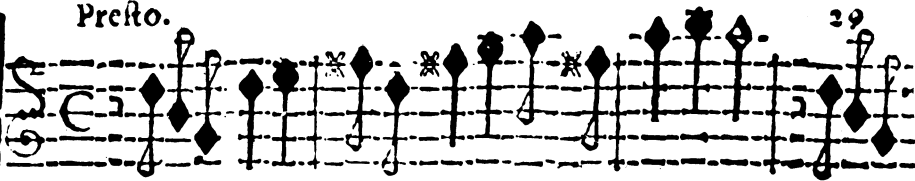


RANDO PRIMO.

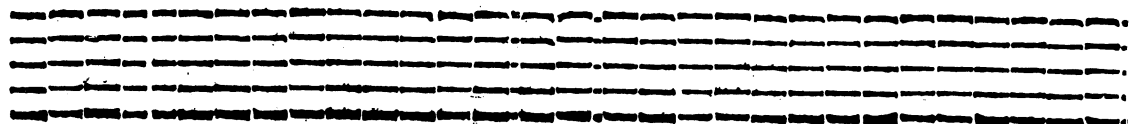
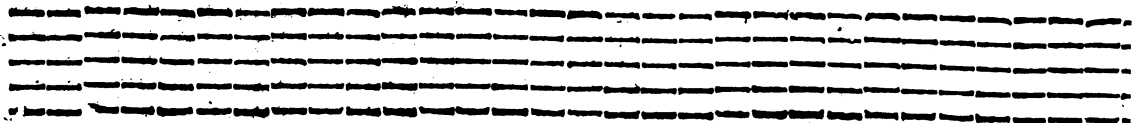
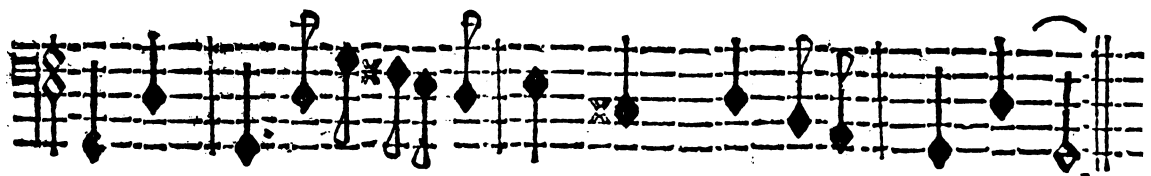
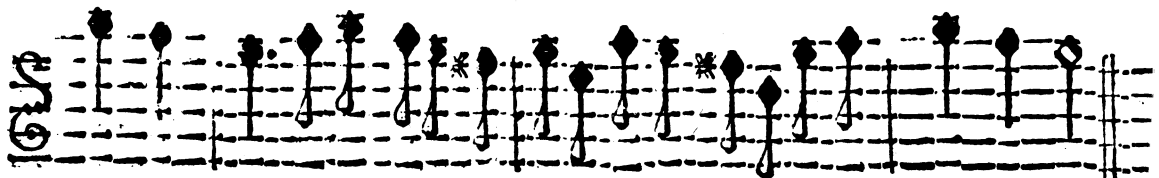
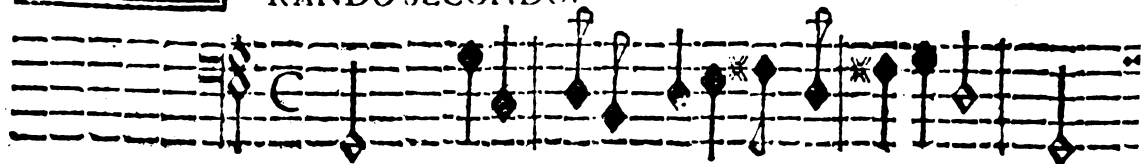


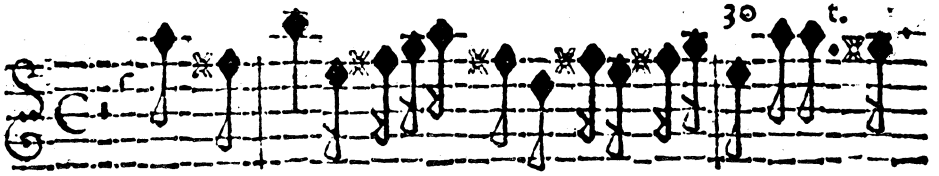


Presto.

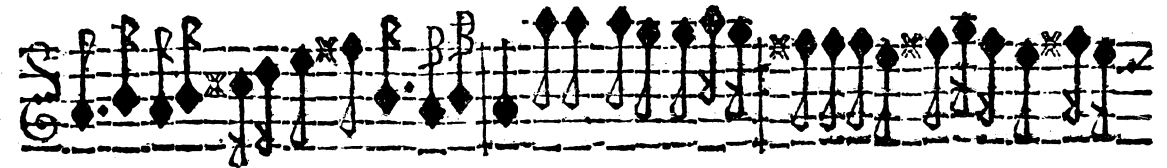
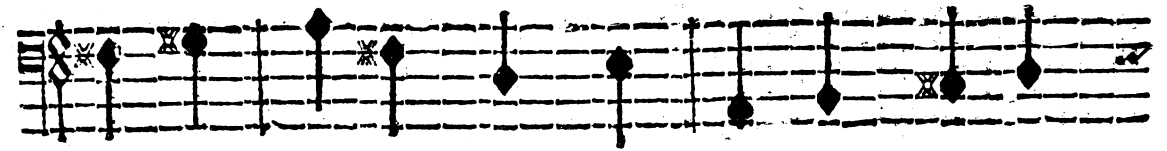
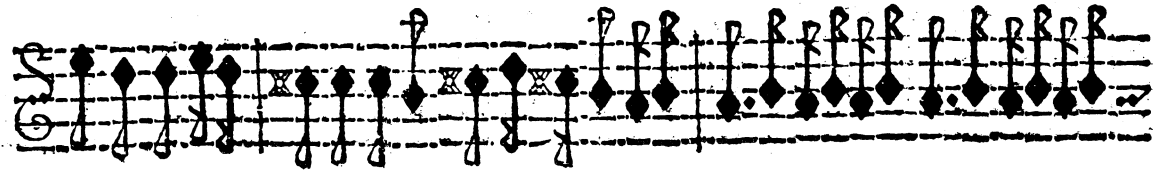
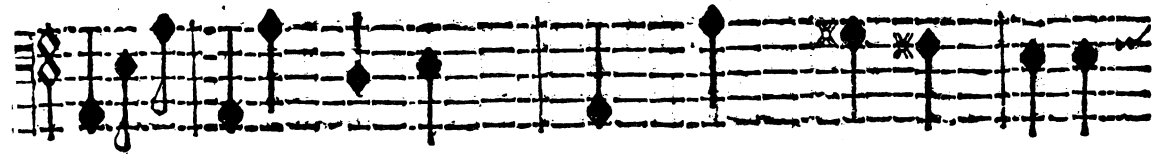
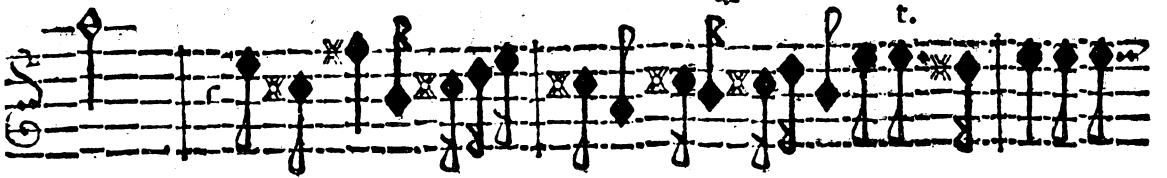


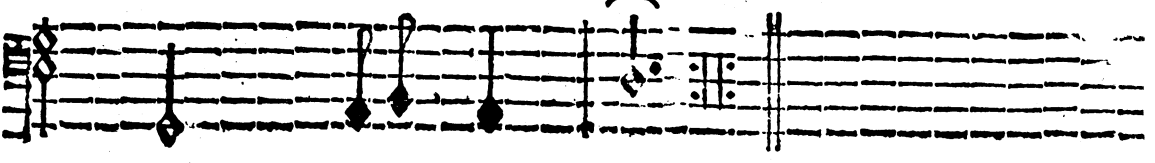
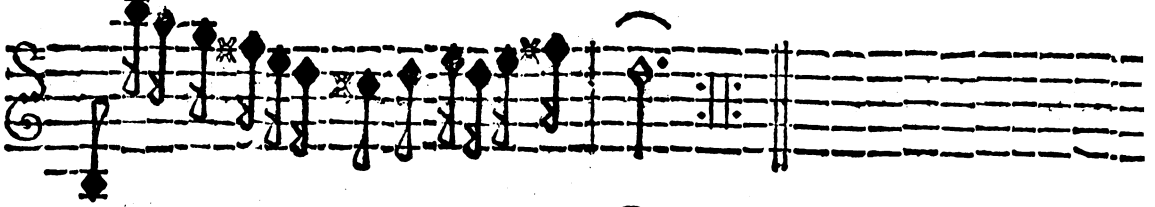
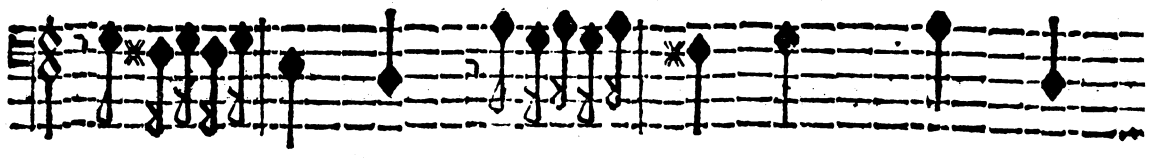
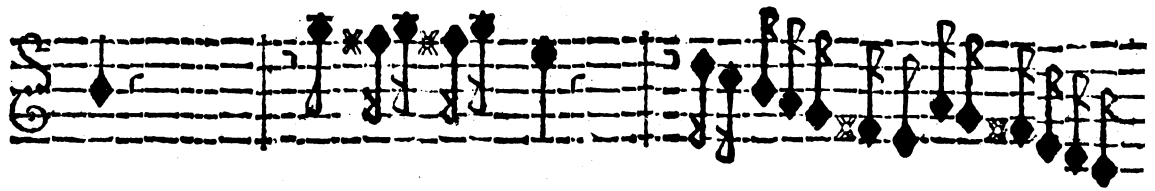
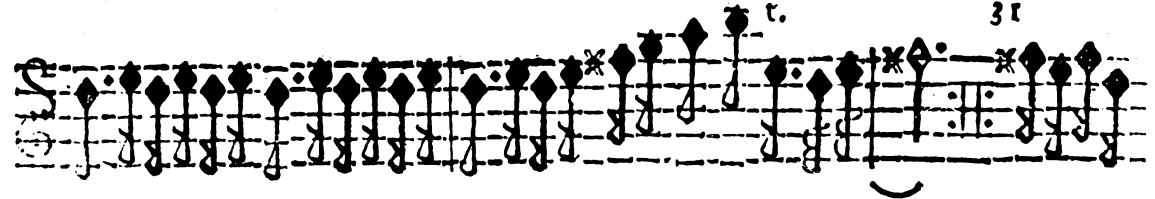
RANDO SECONDO.





RIA OVERO BALLETO.





T A V O L A.

Balletto Primo. Carte.	4.	Corrente Prima.	5.
Balletto Secondo.	6.	Corrente Seconda.	7.
Balletto Terzo.	8.	Corrente Terza.	9.
Balletto Quarto.	10.	Corrente Quarta.	11.
Balletto Quinto.	12.	Corrente Quinta.	13.
Balletto Sesto.	14.	Corrente Sesta.	15.
Balletto Settimo.	16.	Corrente Settima.	17.
Balletto Ottavo.	18.	Corrente Ottava.	19.
Balletto Nono.	20.	Corrente Nona.	21.
Balletto Decimo.	22.	Corrente Decima.	23.
Balletto Vndecimo.	24.	Corrente Vndecima.	25.
Balletto Duodecimo.	26.	Corrente Duodecima.	27.
Brando Primo.	28.	Brando Secondo.	29.
Aria, ouero Balletto.		30.	

F I N I S.