

TRUMPET ARIA

(from: Arie 'Hier lieg' ich nun', BWV 519)

for Trumpet and Organ

Score (00':42")

Johann Sebastian Bach (1685 - 1750)

Arr. Michel Rondeau

Moderato ♩ = 70

Trumpet in C

Organ

This system contains the first three measures of the score. The Trumpet in C part is written in a single staff with a treble clef, a key signature of two flats (B-flat and E-flat), and a 4/4 time signature. The Organ part is written in two staves (treble and bass clefs) with the same key signature and time signature. The organ accompaniment features a steady eighth-note bass line and a treble line with chords and moving lines.

C Tpt.

Org.

This system contains measures 4 through 6. The C Trumpet part continues with a melodic line, including a triplet of eighth notes in measure 4. The Organ part provides harmonic support with chords and a consistent bass line.

C Tpt.

Org.

This system contains measures 7 through 9, which conclude the piece. The C Trumpet part features a melodic phrase that ends with a fermata. The Organ part provides a final harmonic setting with sustained chords and a concluding bass line.

TRUMPET ARIA

(from: Arie 'Hier lieg' ich nun', BWV 519)

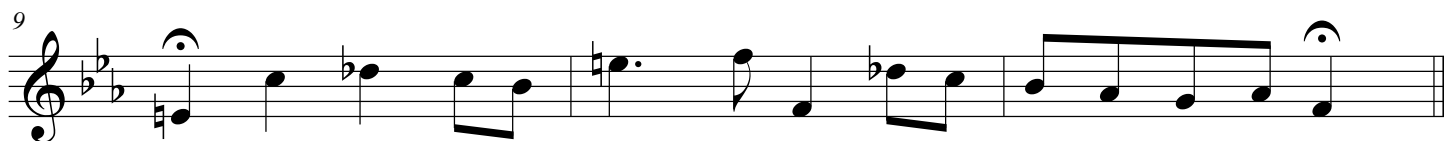
for Trumpet and Organ

Trumpet in C

Johann Sebastian Bach (1685 - 1750)

Arr. Michel Rondeau

Moderato ♩ = 70



TRUMPET ARIA

(from: Arie 'Hier lieg' ich nun', BWV 519)

for Trumpet and Organ

Johann Sebastian Bach (1685 - 1750)

Arr. Michel Rondeau

Organ

Trumpet in C

Moderato ♩ = 70

C Tpt.

Org.

C Tpt.

Org.