

Sehr langsam, Metronom 44 σ .

Violin

I

Violin

II

Viola

Violoncello

mf

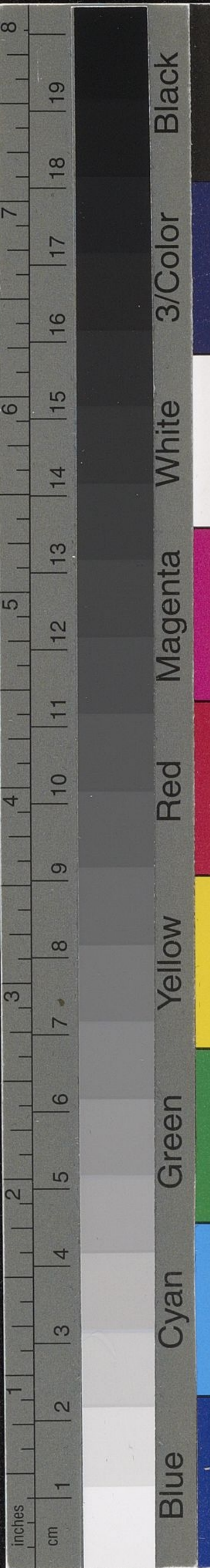
*Andante
ad libitum*

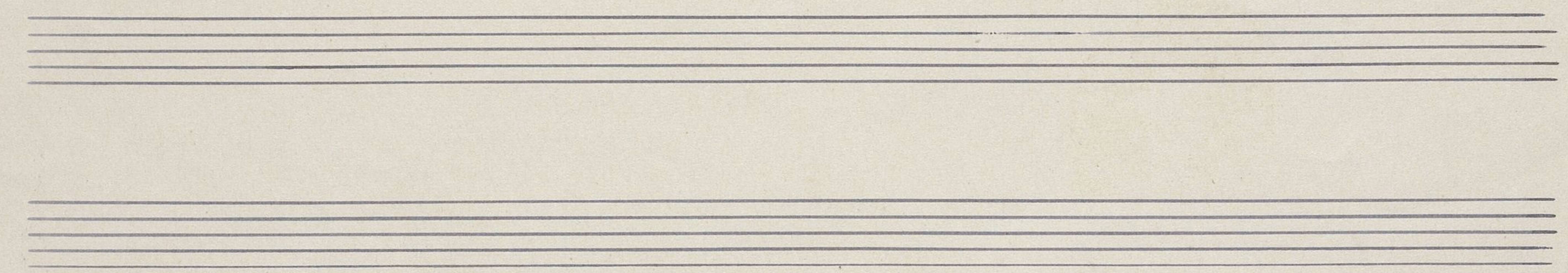
un poco espresso

un poco es

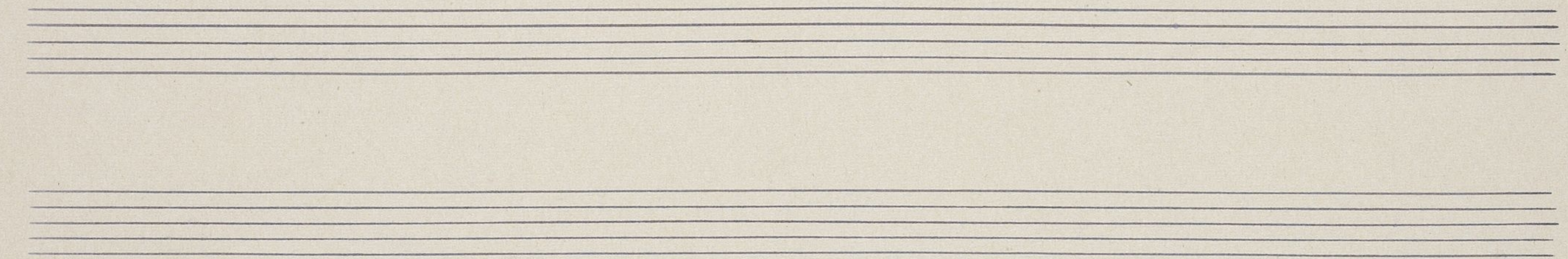
tremolo

*Vide die Harfen
begleitung*

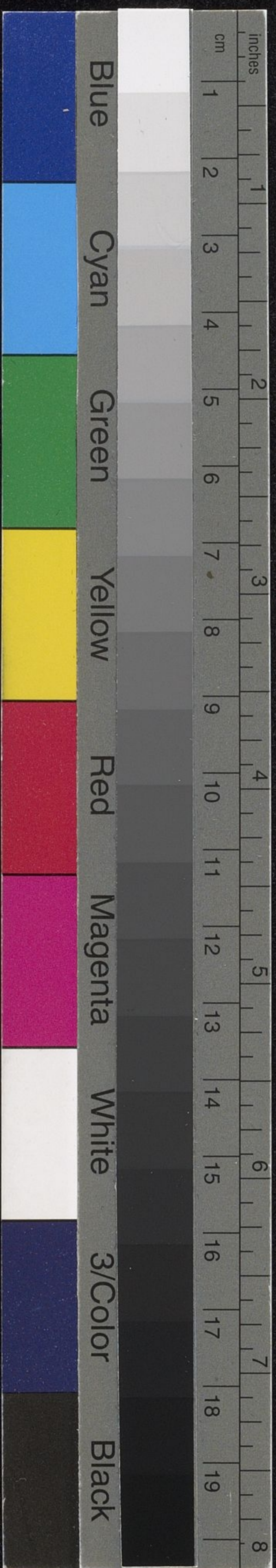


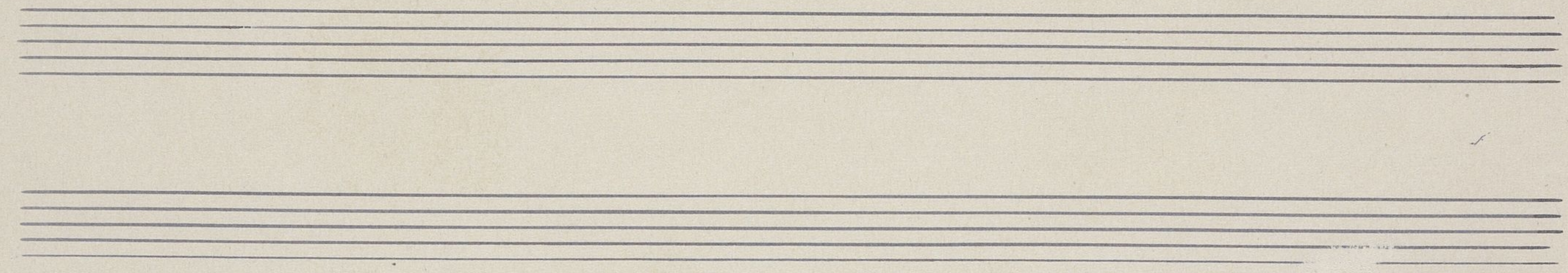


Handwritten musical score for the first system, consisting of four staves. The top two staves are treble clefs with a key signature of three sharps (F#, C#, G#). The bottom two staves are bass clefs with the same key signature. The music features melodic lines with slurs and ties, and a bass line with rhythmic patterns and slurs.



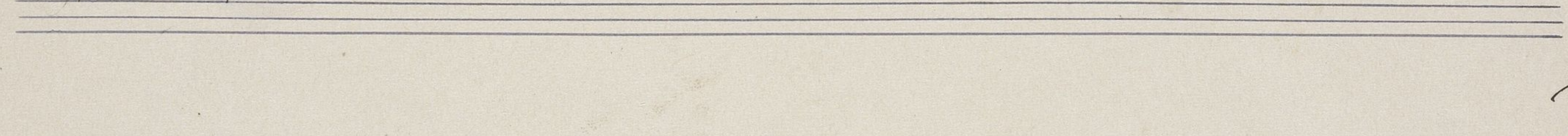
Handwritten musical score for the second system, consisting of four staves. The top two staves are treble clefs with a key signature of three sharps (F#, C#, G#). The bottom two staves are bass clefs with the same key signature. The music features melodic lines with slurs and ties, and a bass line with rhythmic patterns and slurs. The word "sempre piano" is written in cursive across the first three staves.



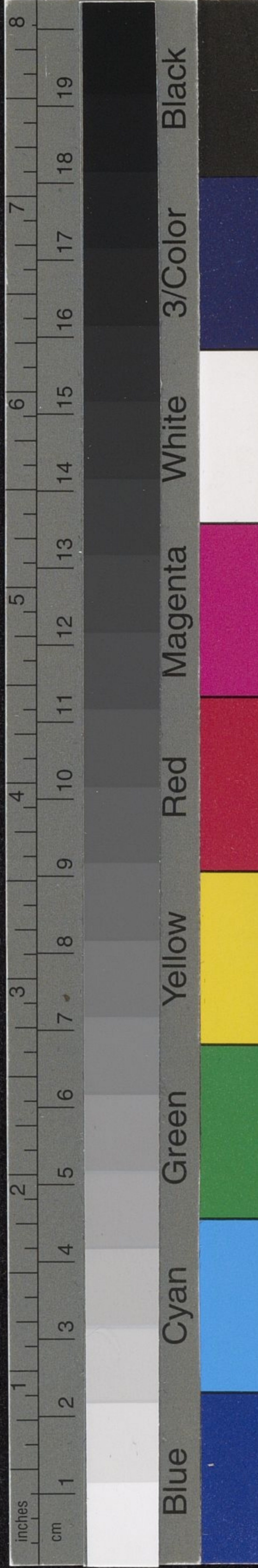


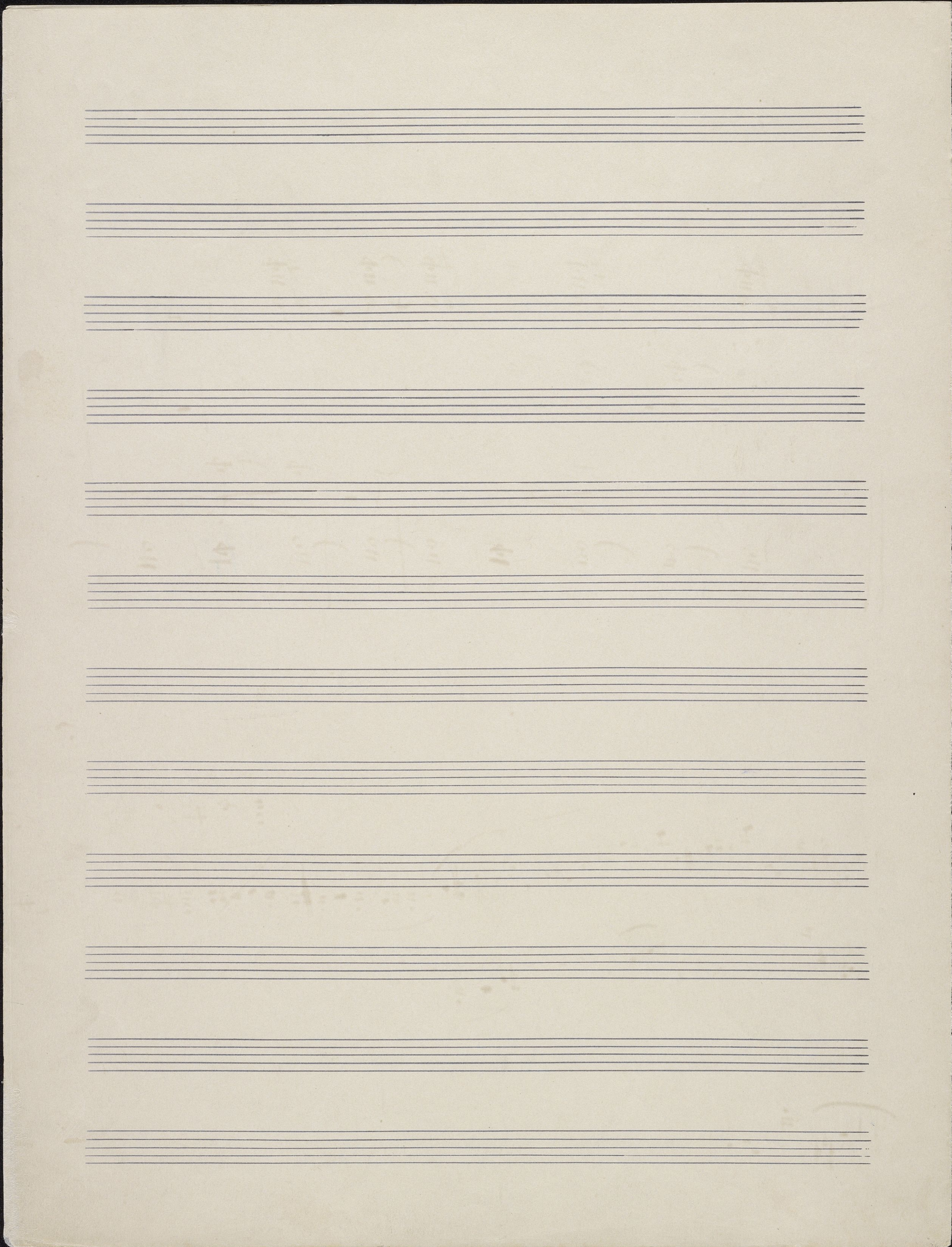
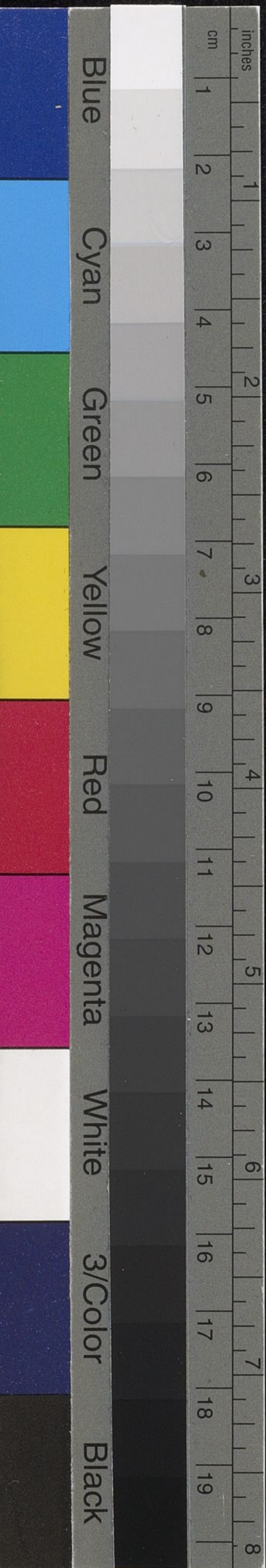
Handwritten musical notation on four staves. The notation includes notes, rests, and dynamic markings. The word "perden do" is written in cursive across the second, third, and fourth staves. The notes are mostly quarter and eighth notes, with some rests. The key signature has three sharps (F#, C#, G#).

(F#) Harpe



Handwritten musical notation on four staves. The notation is more complex, featuring many notes, some with accidentals, and some staves that are heavily scribbled over or crossed out. The key signature remains three sharps. The word "perden do" is not present in this section.





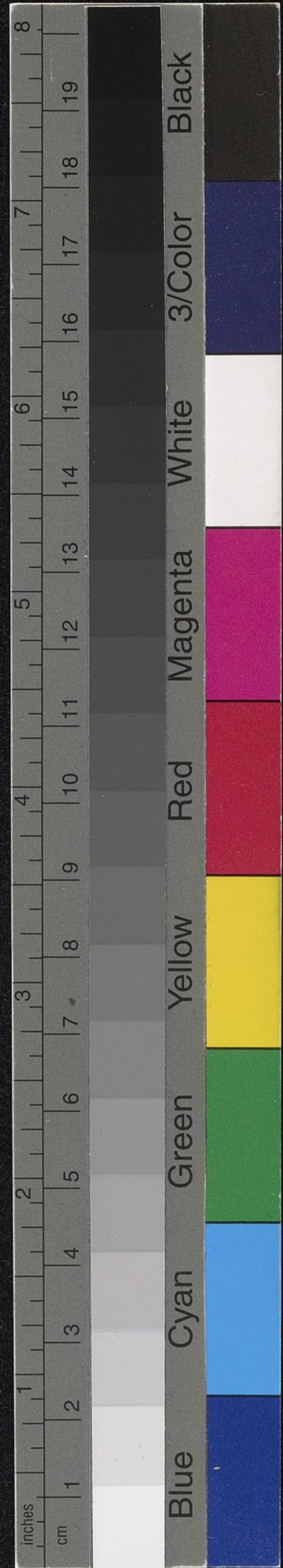
~~Richard~~
Am Elisabeth Wagner's

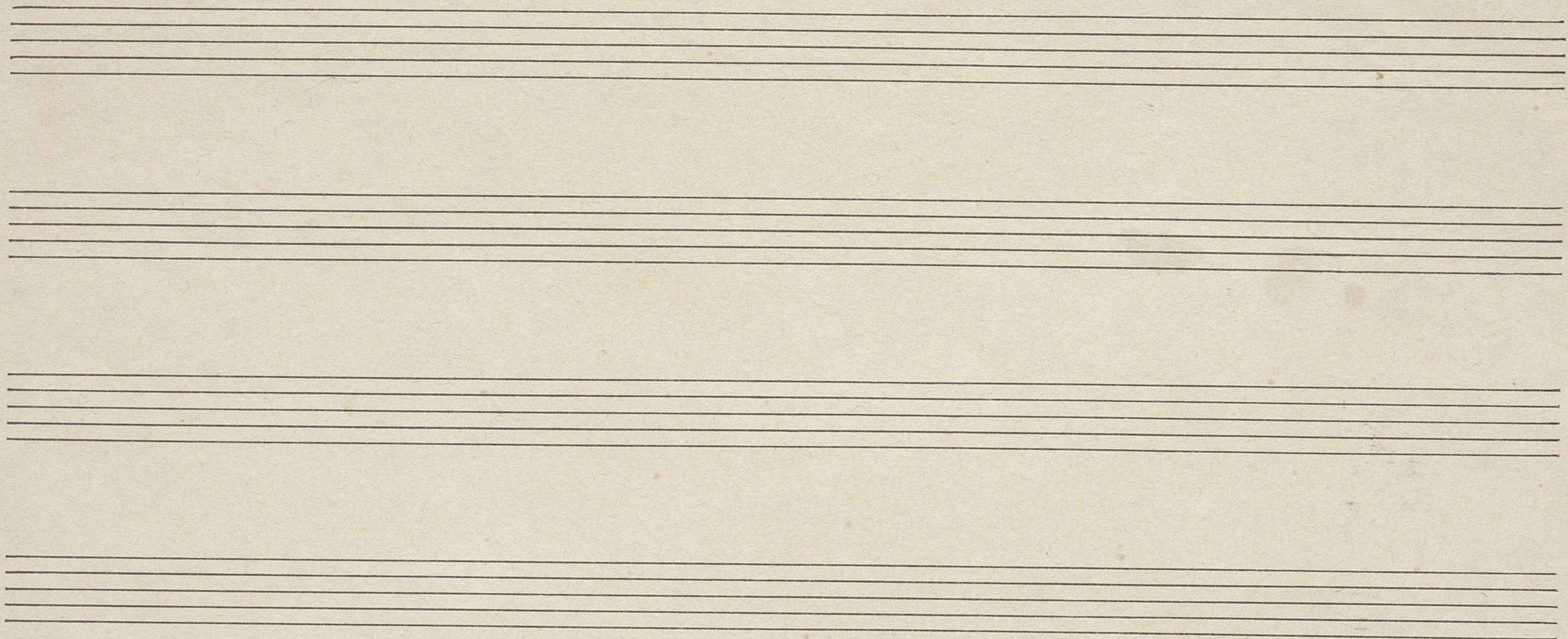
Harpfe
ad libitum

Sehr langsam
8

Handwritten musical notation for the first system, consisting of a treble staff and a bass staff. The treble staff contains a series of notes, some with stems pointing down, and rests. The bass staff contains notes with stems pointing up and rests. The notation is in a key with three sharps (F#, C#, G#) and a common time signature (C). The tempo marking 'Sehr langsam' and the number '8' are written above the treble staff.

Handwritten musical notation for the second system, consisting of a treble staff and a bass staff. The treble staff contains notes with stems pointing down and rests. The bass staff contains notes with stems pointing up and rests. The notation is in a key with three sharps (F#, C#, G#) and a common time signature (C). The tempo marking 'Sehr langsam' and the number '8' are written above the treble staff. The instruction 'sempre arpeggiando e mf.' is written across the middle of the system.





Handwritten musical notation on two staves. The top staff begins with a treble clef, a key signature of two sharps (F# and C#), and a time signature of 12/8. The word "Allegro" is written above the staff. The bottom staff begins with a bass clef, the same key signature, and a time signature of 12/8. The word "Allegro" is written above the staff. Both staves contain musical notes, rests, and bar lines. A Roman numeral "I" is written above the first measure of the bass staff.

