

Echo Quartetto

Oboe I

A. Lotti (1666-1740)

[1.] Echo

10

14

17

21

24

27

30

34

38

41

2

Musical score for Oboe I, measures 46-75. The score is written in treble clef with a key signature of one flat (B-flat). The music features a variety of rhythmic patterns, including eighth and sixteenth notes, and rests. A trill is marked above the first measure of the first system. The piece concludes with a triplet of eighth notes in the final measure.

46

49

51

54

58

61

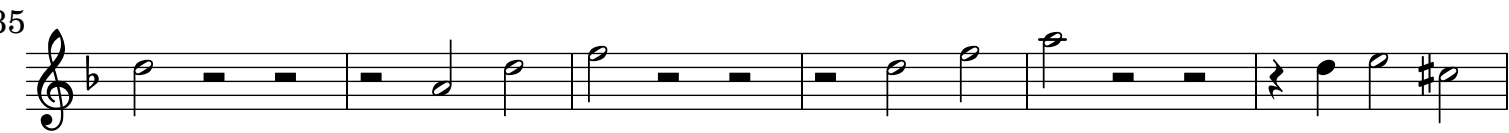
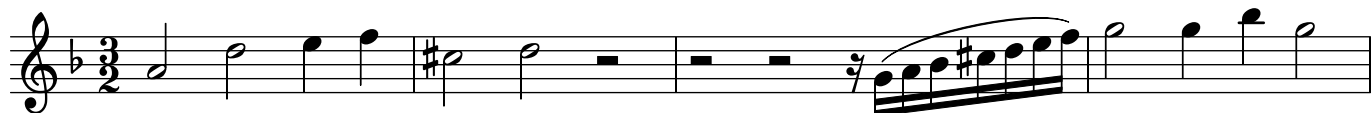
65

68

71

75

[2.] Adagio



[3.] Presto

Musical score for Oboe I, [3.] Presto. The score is written in treble clef, 3/8 time, and B-flat major. It consists of 121 measures, divided into 12 systems of 10 measures each. The score features a variety of rhythmic patterns, including eighth and sixteenth notes, and rests. There are several dynamic markings, including accents and slurs. The piece concludes with a double bar line and a repeat sign.

Measures 1-10: Introduction with eighth notes and a dotted quarter note.

Measures 11-20: Rapid sixteenth-note passages.

Measures 21-30: Similar to measures 11-20, with a fermata over the second measure.

Measures 31-40: Rapid sixteenth-note passages, ending with a fermata over the tenth measure.

Measures 41-50: Eighth-note patterns with rests, ending with a repeat sign.

Measures 51-60: Eighth-note patterns with rests, ending with a repeat sign.

Measures 61-70: Rapid sixteenth-note passages, ending with a fermata over the tenth measure.

Measures 71-80: Eighth-note patterns with rests, ending with a fermata over the tenth measure.

Measures 81-90: Eighth-note patterns with rests, ending with a fermata over the tenth measure.

Measures 91-100: Eighth-note patterns with rests, ending with a fermata over the tenth measure.

Measures 101-110: Eighth-note patterns with rests, ending with a fermata over the tenth measure.

Measures 111-121: Eighth-note patterns with rests, ending with a fermata over the tenth measure.