

Clarinetto in A.

SERENADE.

IDYLLE.

Emil Hartmann, Op. 24.

Andante.

p *smorz.* *Allegro.* *smorz.* *2 <p>* *cresc.* *f* *dim.* *Piano.* *p* *cresc.* *p dol.* *dim.* *B* *f* *cresc.* *ff* *ff*



Clarinetto in A.

Andante.
p

Allegro.
smorz. *p* *cresc.*

f *cresc.*

ff *dim.*

p

dim. *pp*

smorz. *pp sempre*

cresc.

p *cresc.* *ff*

dim. *pp*

Poco più sostenuto. *pp*

dim. *pp sempre*

Cello.

Clarinetto in A.

This section of the musical score for Clarinet in A consists of six staves. The first staff is a single melodic line. The second staff is a cello part, labeled 'Cello.' and 'Andante.', with dynamics 'poco rit. pp' and 'smorz.'. The third staff continues the melodic line with a 'pp' dynamic. The fourth staff is a bass line with a 'b' key signature. The fifth staff continues the melodic line with a 'ff' dynamic. The sixth staff concludes the section with a 'p riten.' dynamic.

ROMANCE.

This section of the musical score for Romance consists of five staves. The first staff is labeled 'in B Andante.' and 'Cello.', with a '5' marking. The second staff has a '3' marking and dynamics 'pp' and 'dim.'. The third staff has a 'p' dynamic and a '3' marking. The fourth staff has a 'pp' dynamic and a 'poco' marking. The fifth staff is labeled 'Allegretto scherzando.' and '14', with a '6/8' time signature and a 'pp' dynamic.

Clarinetto in B.

Cello.

4 3 E

pp p f

2 3 4

5 6 1 Cello.

Tempo I. (*Andante.*)

dim. p

dim. p

dim. p

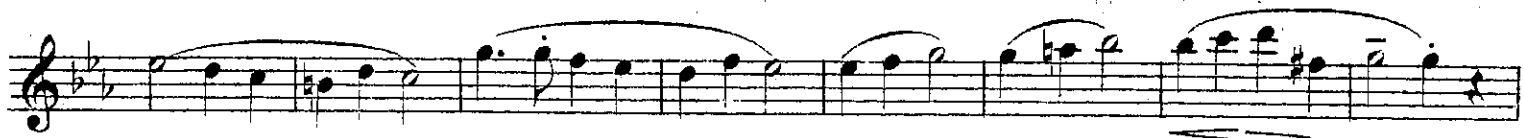
smorz. pp smorz. p smorz.

RONDO - FINALE.

in A Allegro.

p

Clarinetto in A.



Clarinetto in A.

a tempo
Cello.

poco rit. *p*

G
p

1
pp sempre

pp *mf* *cresc.*

ff

SOLO.
p *dolce*

pp *dim.*

18 *Piano.* *H*
pp *pp*

Clarinetto in A.

I rit. a tempo
Cello. 1 2 3 4

p

p *f*

p *f*

f cresc. *ff* *Con fuoco.*

Più mosso. *p*

p *mf* *f* *ff*

