

Crivell

Leo Sanctus

~~11. 3. 5. 10~~

6741

22

Handwritten musical score for a choir. The score consists of ten staves. The first five staves are for Soprano, Alto, Tenor, Bass, and another voice part. The sixth staff contains the vocal line with lyrics: "Cum Sancto Spiritu in gloria dei Pa-tris a-men". The seventh staff contains the lyrics "Alle-luia al-". The eighth staff contains the lyrics "leluia". The ninth and tenth staves are for a Bass part. The score is written in a cursive hand and includes various musical notations such as clefs, time signatures, and notes.



21

Handwritten musical notation on five staves, consisting of rhythmic patterns and notes.

Sancti Spiritus in gloria Dei Patris Amen

Handwritten musical notation with lyrics "Al-lu-lu-lu" and performance markings "al-", "meno", "a".

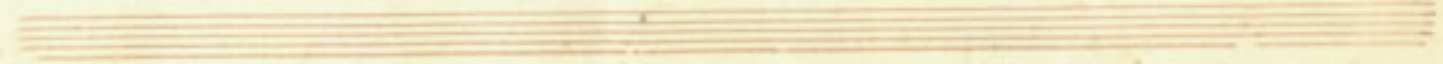
Handwritten musical notation on a single staff.

Handwritten musical notation with lyrics "Alle-lu-lu" and performance markings "Cum Sancto Spiritu in gloria Dei".

Empty musical staves at the bottom of the page.

Handwritten musical notation for the first four staves. The notation includes rhythmic patterns, dynamic markings such as *ff*, and various note values. The staves are connected by a large bracket on the left side.

Handwritten musical notation for the last four staves, including lyrics and performance instructions. The lyrics are: *al - - - - - telu-ia*, *al - - - - - telu-ia*, *al - - - - - telu-ia*, and *al - - - - - telu-ia*. The instructions include *al*, *ff*, *Cantabile*, and *allegro*. There are also handwritten notes in Italian: *Cantabile*, *allegro*, *Sanctus spiritus in forma dei patris*, and *Sanctus spiritus a-*. The notation includes various note values and dynamic markings.



Handwritten musical notation for the first three staves. The first staff contains a series of quarter notes and rests. The second and third staves feature rhythmic patterns with eighth notes and rests, interspersed with quarter notes.

Handwritten musical notation for the fourth staff, including the instruction "Col Basso". The staff begins with a quarter note, followed by a series of eighth notes and rests.

Handwritten musical notation for the fifth staff, featuring a dense rhythmic pattern of eighth notes and rests.

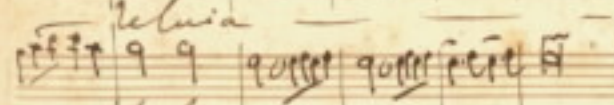
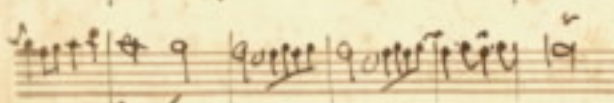
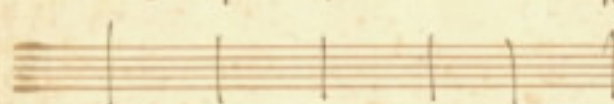
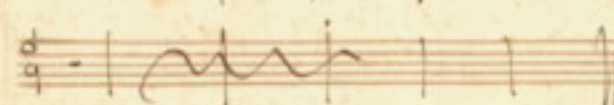
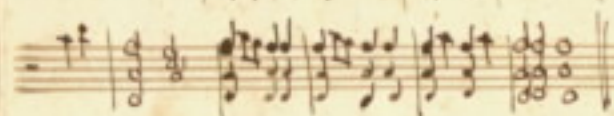
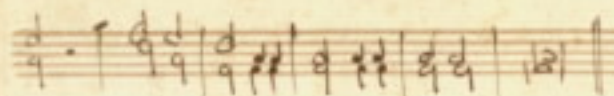
Handwritten musical notation for the sixth staff with lyrics: "Tuo... alle... lueia... alle... lueia... at...". The lyrics are written below the notes.

Handwritten musical notation for the seventh staff with lyrics: "Tuo... alle... lueia... alle... lueia... at...". The lyrics are written below the notes.

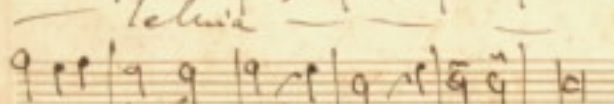
Handwritten musical notation for the eighth staff with lyrics: "Tuo... alle... lueia... alle... lueia... at...". The lyrics are written below the notes.

Handwritten musical notation for the ninth staff with lyrics: "Tuo... alle... lueia... alle... lueia... at...". The lyrics are written below the notes.

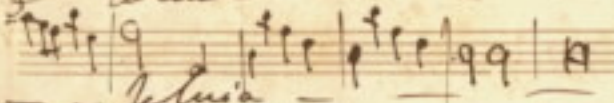
Handwritten musical notation for the tenth staff, including numerical markings like "7", "3", and "777 777". The staff contains rhythmic patterns and rests.



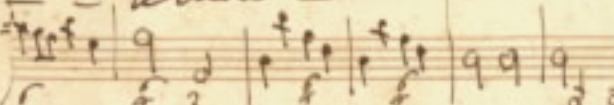
Alcudia



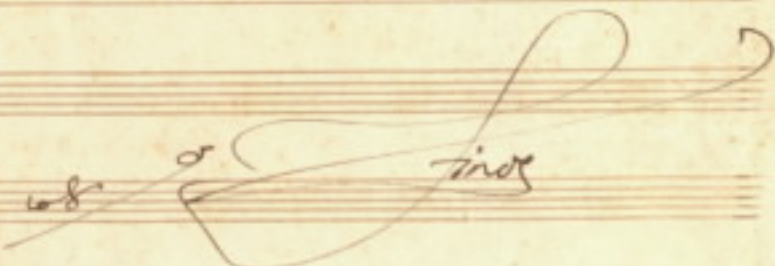
Alcudia



Alcudia



6741



Op. 326.

26

BIBLIOTECA DEL R. CONSERVATORIO
DI MUSICA IN NAPOLI
AUTOGRAFI

*partito di
Roni*

1841

14.3.80

24 VIII 80

14.3.80

6741

6741