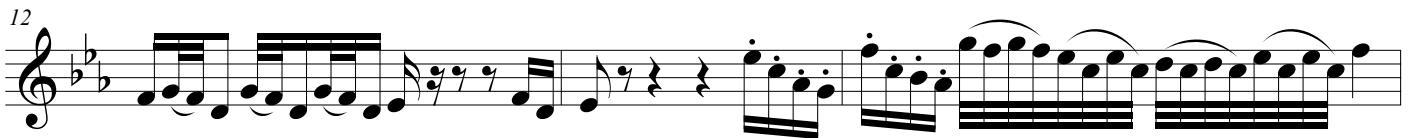


# 遼闊中國

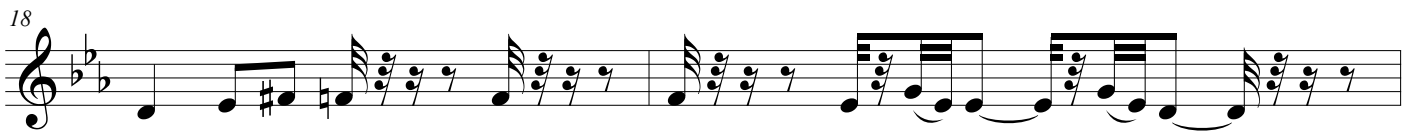
Violin II

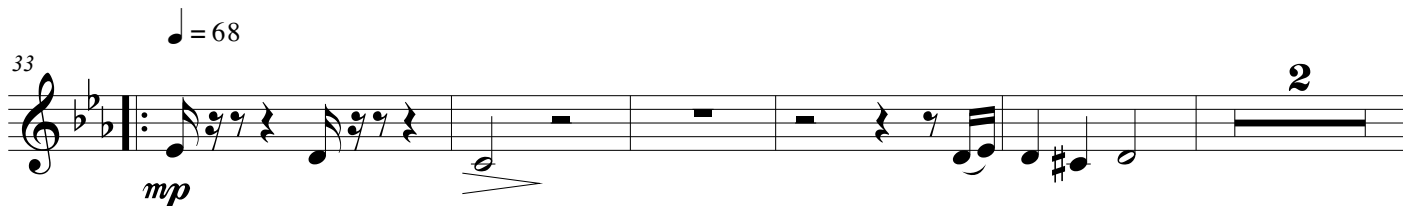
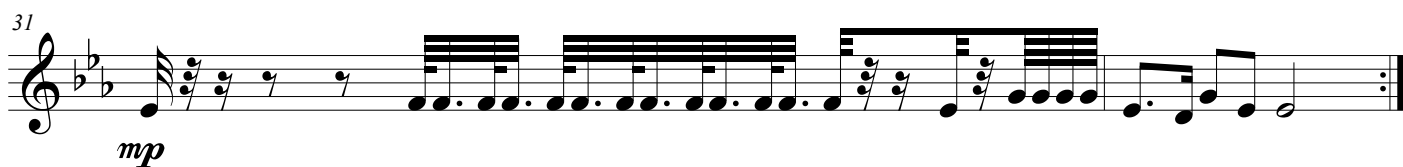
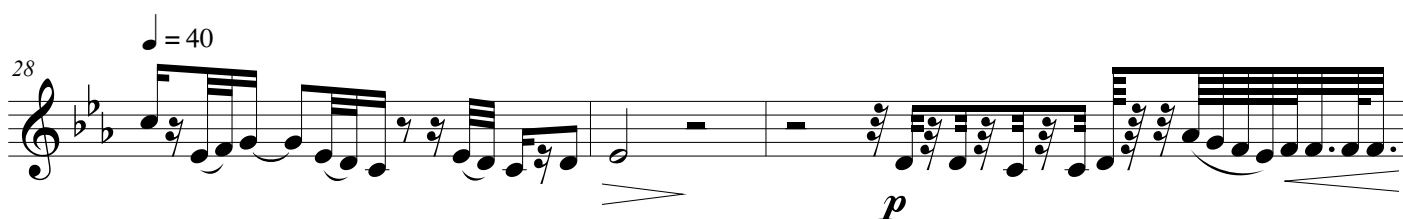
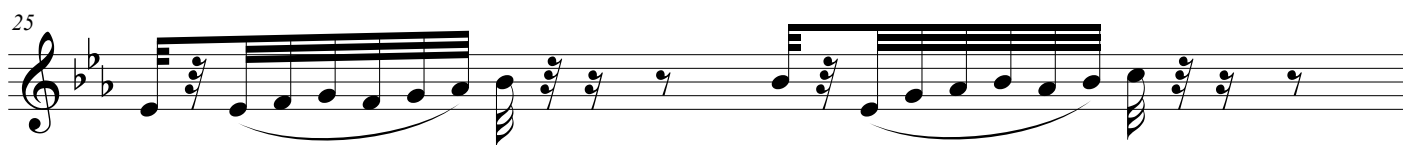
Cheng-Shiun

Overture  $\text{♩} = 40$



Fine  $\text{♩} = 68$





Fine ♩ = 80

50

57

61

66

♩ = 40

75

80

♩ = 68

81

*mf*

To Coda

85

**3**

92

96

99

*rit.*      ♩ = 40

6

108

*accel.*      ♩ = 68

*mf*

112

116

♩ = 40      2      ♩ = 68

*mf*

120

121

124

2

129

*mp*

134

137

139  $\text{♩} = 68$

*f*

143

147

152

156 *rit.*  $\text{♩} = 40$

160

*mp*