

*M.S.R.*

27

Only Authorized Edition.

TO  
MISS EILIE BRYANT,  
NEW YORK.

# ALBANY ALBANY

IRISH BALLAD

Words by

**E. S. Marble**

Music by

**J. R. Thomas.**

TRANSCRIPTION .....	1
SONG .....	1
SONG, FOR GUITAR .....	1
WALTZ .....	1
VARIATIONS .....	1
QUICKSTEP .....	1
QUICKSTEP, FOR HARP .....	1

NEW YORK.

**WM. A. POND & CO.**

25 UNION SQUARE,

(Broadway, bet. 15th & 16th Sts.)

*J. R. Thomas*

# EILLEN ALLANNA.

## SONG AND CHORUS.

Words by E. S. MABLE.

Music by J. R. THOMAS.

*Andantino.*

Piano introduction in G minor, 3/4 time. The music is marked *Andantino*. It features a melody in the right hand and a rhythmic accompaniment in the left hand. The piece concludes with a *dim.* (diminuendo) marking.

55

Vocal entry and piano accompaniment for the first two lines of the song. The piano part features a steady eighth-note accompaniment. The vocal line is in G minor, 3/4 time.

1. Eil - leen Al - lan - na, Eil - leen As - thore, . . . . Light of my soul and its  
2. Eil - leen Al - lan - na, Eil - leen As - thore, The o - cean's blue wa - ters

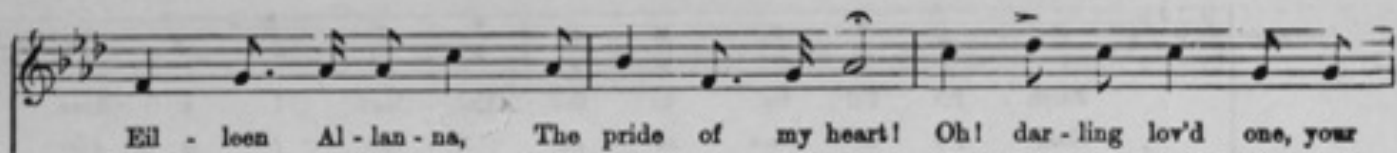
*poco rit.*

*a tempo.*

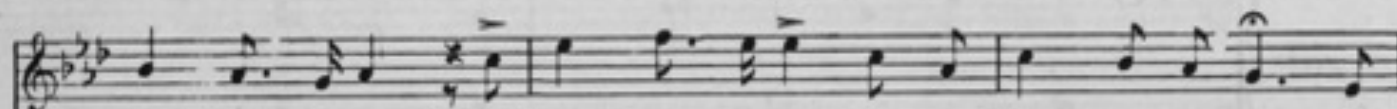
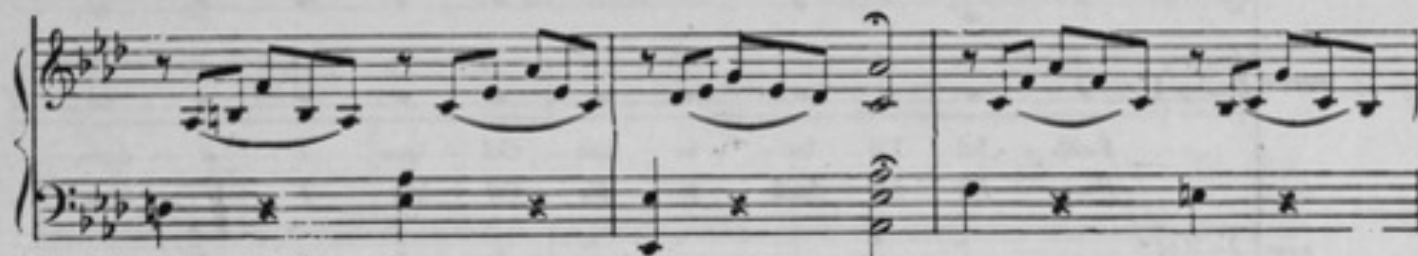
Vocal entry and piano accompaniment for the chorus. The piano part features a steady eighth-note accompaniment. The vocal line is in G minor, 3/4 time. The tempo markings *poco rit.* and *a tempo.* are indicated above the staff.

Queen ev - er - more, It seems years have lin - gered since last we did part,  
wash by the shore Of that dear land of sham - rock where thou dost a - bide,

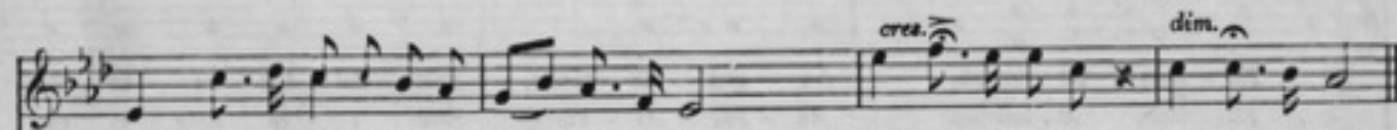




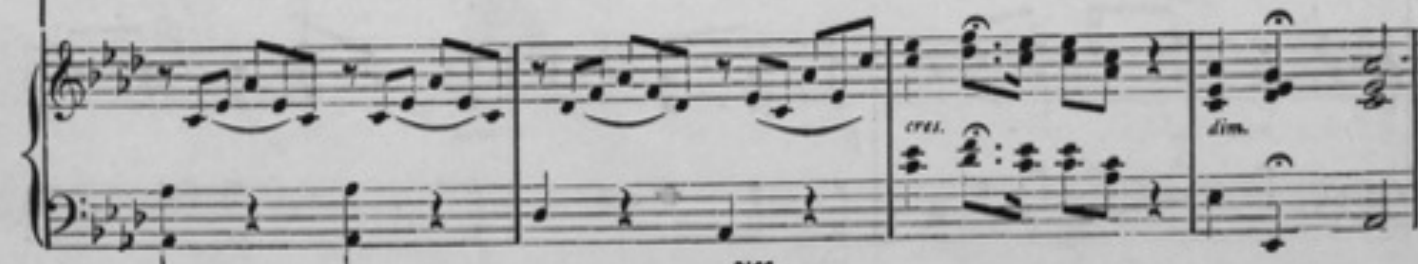
Eil - leen Al - lan - na, The pride of my heart! Oh! dar - ling lov'd one, your  
 Wait - ing the day when I'll call thee my bride! God bless you, dar - ling, I



dear smile I miss; My lips seem to cling to that sweet parting kiss! Ma -  
 know you are true, True to the boy who would die now for you; My



- your - neen, thy sweet face I see at the door, Eilleen Al - lanna, Au - gus Asthore.  
 heart is now bleeding to its in - ner - most core, Eilleen Al - lanna, Au - gus Asthore.



## \* CHORUS.

**SOPRANO**

Faith - - ful I'll be to the Col - leen I a - dore,  
 Soon I'll be back to the Col - leen I a - dore,

**ALTO**

**TENOR**

Faith - - ful I'll be to the Col - leen I a - dore,  
 Soon I'll be back to the Col - leen I a - dore,

**BASS**

**PIANO**

*cres.* *p* *cres.*

Eil - leen Al - lan-na, Au - gus As - thore, Faith - ful I'll be to the  
 Eil - leen Al - lan-na, Au - gus As - thore, Soon I'll be back to the

*cres.* *p* *cres.*

Eil - leen Al - lan-na, Au - gus As - thore, Faith - ful I'll be to the  
 Eil - leen Al - lan-na, Au - gus As - thore, Soon I'll be back to the

*cres.* *p* *cres.*

\* The Chorus may be omitted at pleasure.

M.M.

*crec.* *dim.*

Col - leen I a - dore, Eil - leen Al - lan - na, Au - gus As - thore.  
 Col - leen I a - dore, Eil - leen Al - lan - na, Au - gus As - thore.

*crec.* *dim.*

Col - leen I a - dore, Eil - leen Al - lan - na, Au - gus As - thore.  
 Col - leen I a - dore, Eil - leen Al - lan - na, Au - gus As - thore.

*crec.* *dim.*

*Dal Segno. 55*

*dim.* *Dal Segno.*