



Myslivecek - Triosonate II

56

64

71

77

82

86

89

92

96

102

108

112

*f* *p* *f* *p* *f* *p*

*p* *f* *p*

*f*

*p* *f* *p*

*f*

*tr*

*tr*

*tr*

*tr* *p*

*f*

*f*

*f*

Detailed description: This is a page of a musical score for Violin 2, measures 56 to 112. The music is in G major (one sharp) and 3/4 time. The score consists of ten staves. The first staff (measures 56-63) begins with a repeat sign and contains a melodic line with dynamics *f* and *p*. The second staff (measures 64-70) continues the melodic line with alternating *f* and *p* dynamics. The third staff (measures 71-76) features a more rhythmic, eighth-note pattern, ending with a *f* dynamic. The fourth staff (measures 77-81) is characterized by a continuous eighth-note tremolo, with a *f* dynamic and a trill (*tr*) in the final measure. The fifth staff (measures 82-85) continues the eighth-note tremolo, ending with a *f* dynamic and a trill (*tr*). The sixth staff (measures 86-88) is a full staff of eighth-note tremolo. The seventh staff (measures 89-91) continues the eighth-note tremolo. The eighth staff (measures 92-95) continues the eighth-note tremolo, ending with a trill (*tr*) and a *p* dynamic. The ninth staff (measures 96-101) begins with a trill (*tr*) and a *p* dynamic, followed by a melodic line. The tenth staff (measures 102-107) continues the melodic line with a *f* dynamic. The eleventh staff (measures 108-111) is a full staff of eighth-note tremolo with a *f* dynamic. The twelfth staff (measures 112-115) is a full staff of eighth-note tremolo.

115

118

121

2. Menuetto 1

127

134

142

Menuetto 2

149

158

166

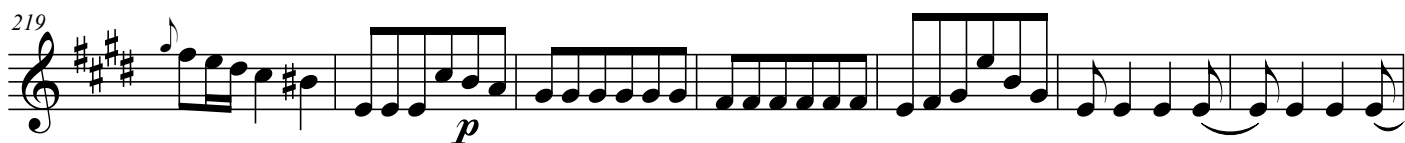
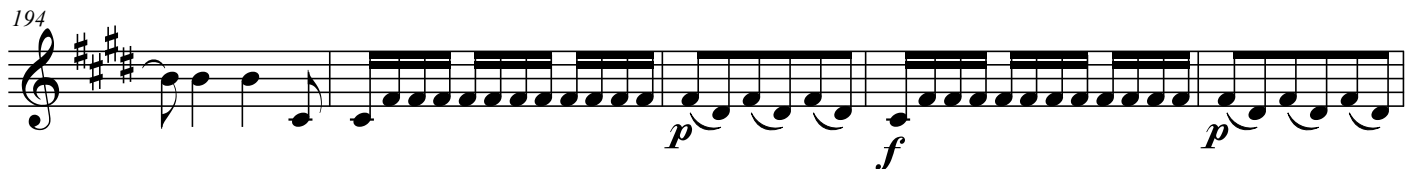
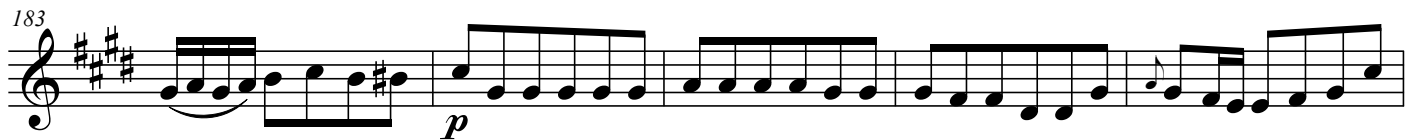
Da Capo 1. Menuetto

3. Andante

173

178

## Myslivecek - Triosonate II





Myslivecek - Triosonate II

351 *p*

362

374 *f*

385

397 *f* 5 4 *f*

412 *p*

421 1 2 3 4 5 6

427 7 8 9 10

435 2 2

448 *f* 1 2 3 4

455 *p f p f* 1 2

463 3 4 *p*

470 *f p f*

Detailed description: This page of a musical score for Violin 2, measures 351-470, is in the key of A major (three sharps) and 3/4 time. The score consists of ten staves of music. Measure 351 begins with a repeat sign and a piano (*p*) dynamic. Measures 362-374 feature a mix of eighth and quarter notes, with a forte (*f*) dynamic starting at measure 374. Measures 385-397 include a five-measure rest followed by sixteenth-note patterns, with a forte (*f*) dynamic. Measures 400-412 continue with sixteenth-note patterns, ending with a piano (*p*) dynamic. Measures 415-427 consist of a sequence of sixteenth-note patterns, numbered 1 through 6. Measures 430-442 continue with sixteenth-note patterns, numbered 7 through 10. Measures 445-457 feature eighth-note patterns with a forte (*f*) dynamic, including a two-measure rest. Measures 460-472 show a dynamic contrast between piano (*p*) and forte (*f*) with eighth-note patterns, numbered 1 and 2. Measures 475-487 continue with eighth-note patterns, numbered 3 and 4, ending with a piano (*p*) dynamic. The final measure, 490, features a forte (*f*) dynamic and concludes with a double bar line.