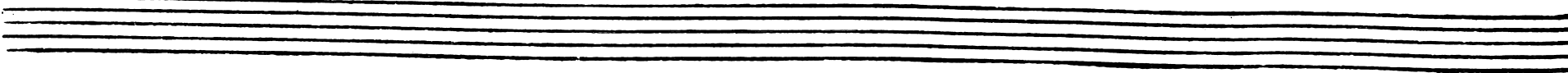
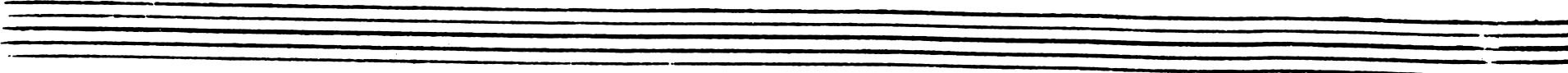
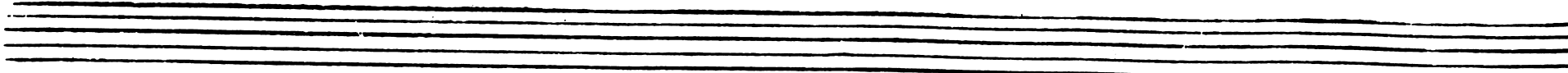
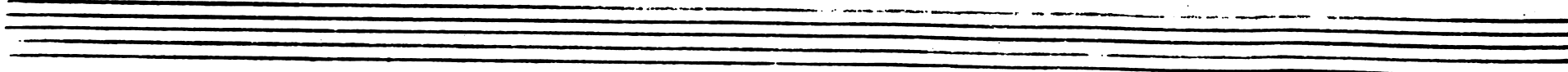
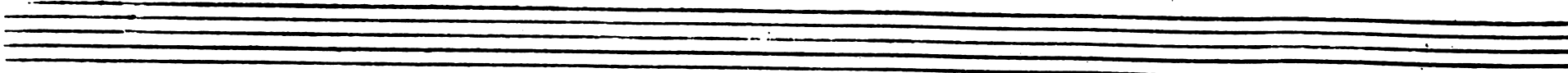
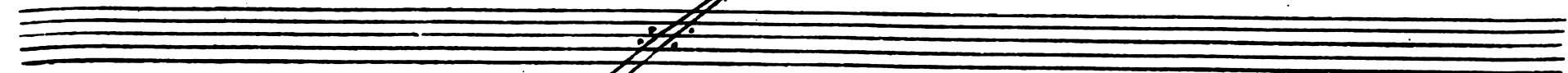


*Alto: Franco*



Handwritten musical notation on a single staff, featuring treble clef, a key signature of one sharp (F#), and a common time signature (C). The notation includes various rhythmic values, slurs, and dynamic markings such as *pp* and *fe*.

Handwritten musical notation on a single staff, continuing the piece with treble clef, one sharp key signature, and common time. It includes slurs, accents, and dynamic markings like *pp* and *fe*.

Handwritten musical notation on a single staff, featuring treble clef, one sharp key signature, and common time. A *Solo* marking is present above the staff, along with slurs and dynamic markings like *pp* and *fe*.

Handwritten musical notation on a single staff, continuing the piece with treble clef, one sharp key signature, and common time. It includes slurs and dynamic markings like *pp* and *fe*.

Handwritten musical notation on a single staff, featuring treble clef, one sharp key signature, and common time. It includes slurs and dynamic markings like *pp* and *fe*.

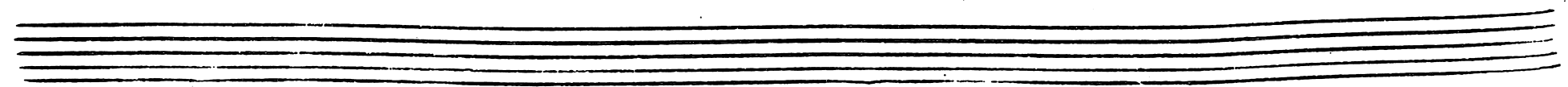
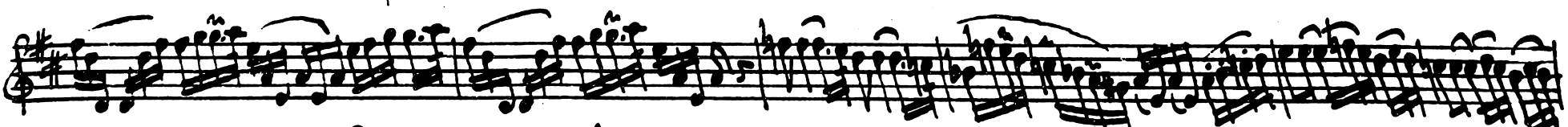
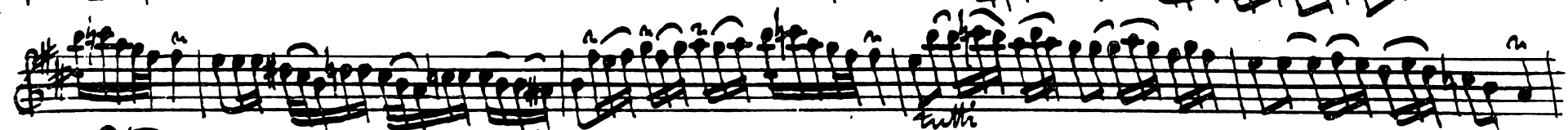
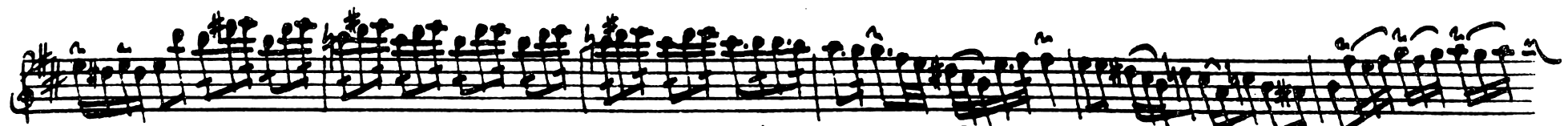
Handwritten musical notation on a single staff, featuring treble clef, one sharp key signature, and common time. A *tutti* marking is present above the staff, along with slurs and dynamic markings like *pp* and *fe*.

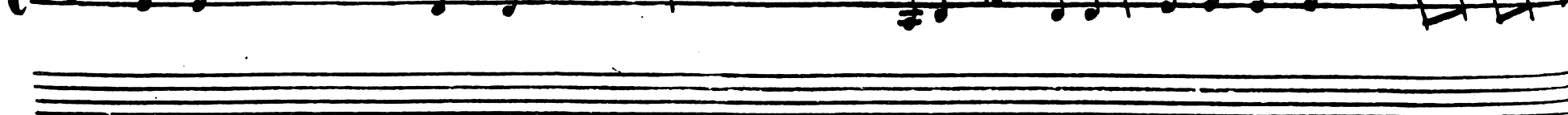
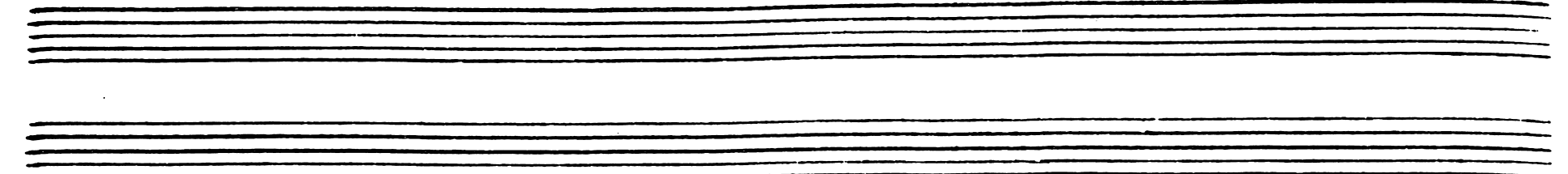
Handwritten musical notation on a single staff, featuring treble clef, one sharp key signature, and common time. A *Solo* marking is present above the staff, along with slurs and dynamic markings like *pp* and *fe*.

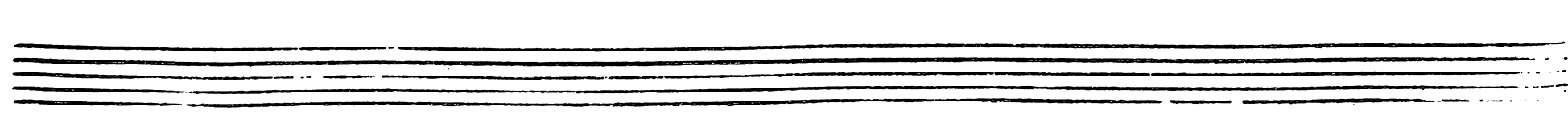
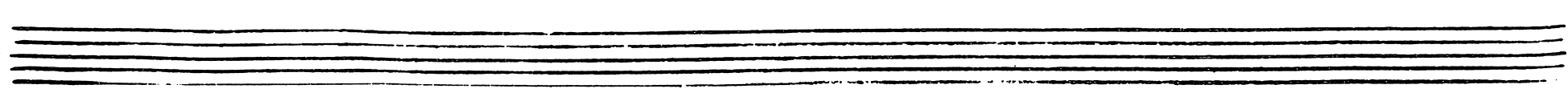
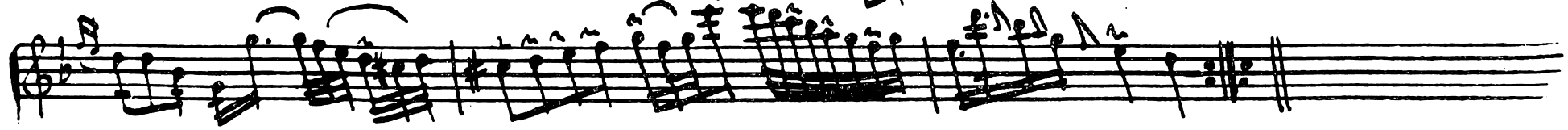
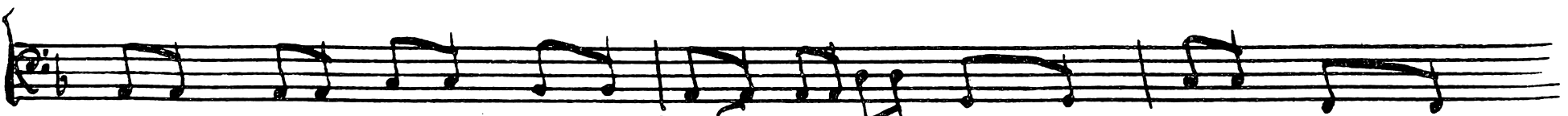
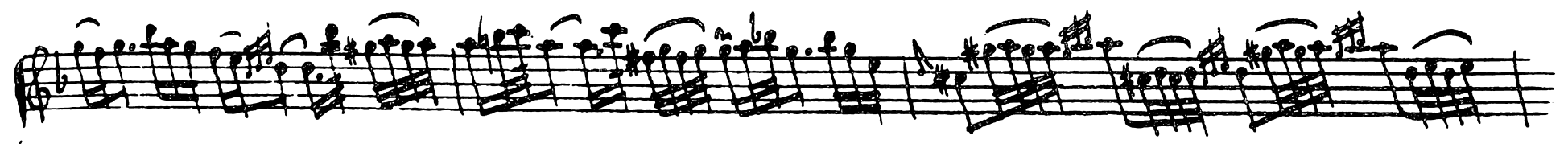
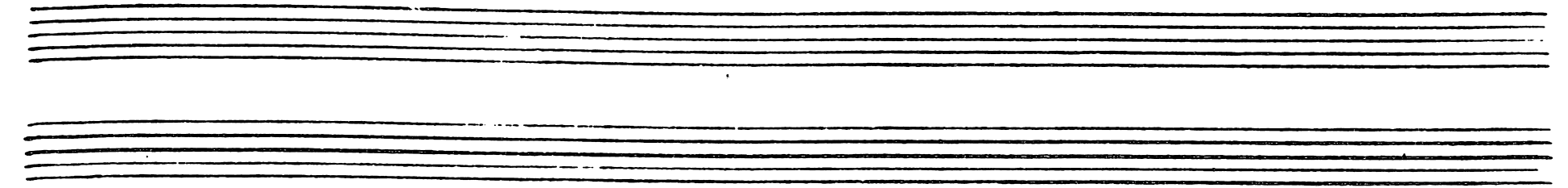
Handwritten musical notation on a single staff, continuing the piece with treble clef, one sharp key signature, and common time. It includes slurs and dynamic markings like *pp* and *fe*.

Handwritten musical notation on a single staff, featuring treble clef, one sharp key signature, and common time. It includes slurs and dynamic markings like *pp* and *fe*.

Handwritten musical notation on a single staff, continuing the piece with treble clef, one sharp key signature, and common time. It includes slurs and dynamic markings like *pp* and *fe*.







A handwritten musical score consisting of ten staves. The notation is dense and includes various musical symbols such as notes, rests, beams, and slurs. The score is marked with several dynamics and articulations: *pp* (pianissimo), *f* (forte), *lo* (lento), *rit* (ritardando), and *tutti*. The music appears to be in a major key with a 3/4 time signature. The handwriting is fluid and characteristic of a composer's sketch or a working draft. The staves are arranged vertically, and the overall layout is clean and organized.

Handwritten musical score consisting of seven staves of music. The key signature is G major (one sharp) and the time signature is 3/4. The notation includes various rhythmic values, slurs, accents, and dynamic markings. The first staff begins with a *tutti* marking. The second staff features a *solo* marking. The music concludes with a double bar line on the seventh staff. Below the main score are three sets of empty musical staves.