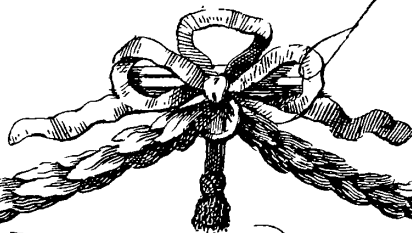


Keebung

2) 2.
HAYDN



Sinfonia
QUATUOR
A

deux VIOLONS, TAILLE,

et BASSE OBLIGÉS

Composés par

GIUSEPPE HAYDN

(a Vienna)

Opera II.

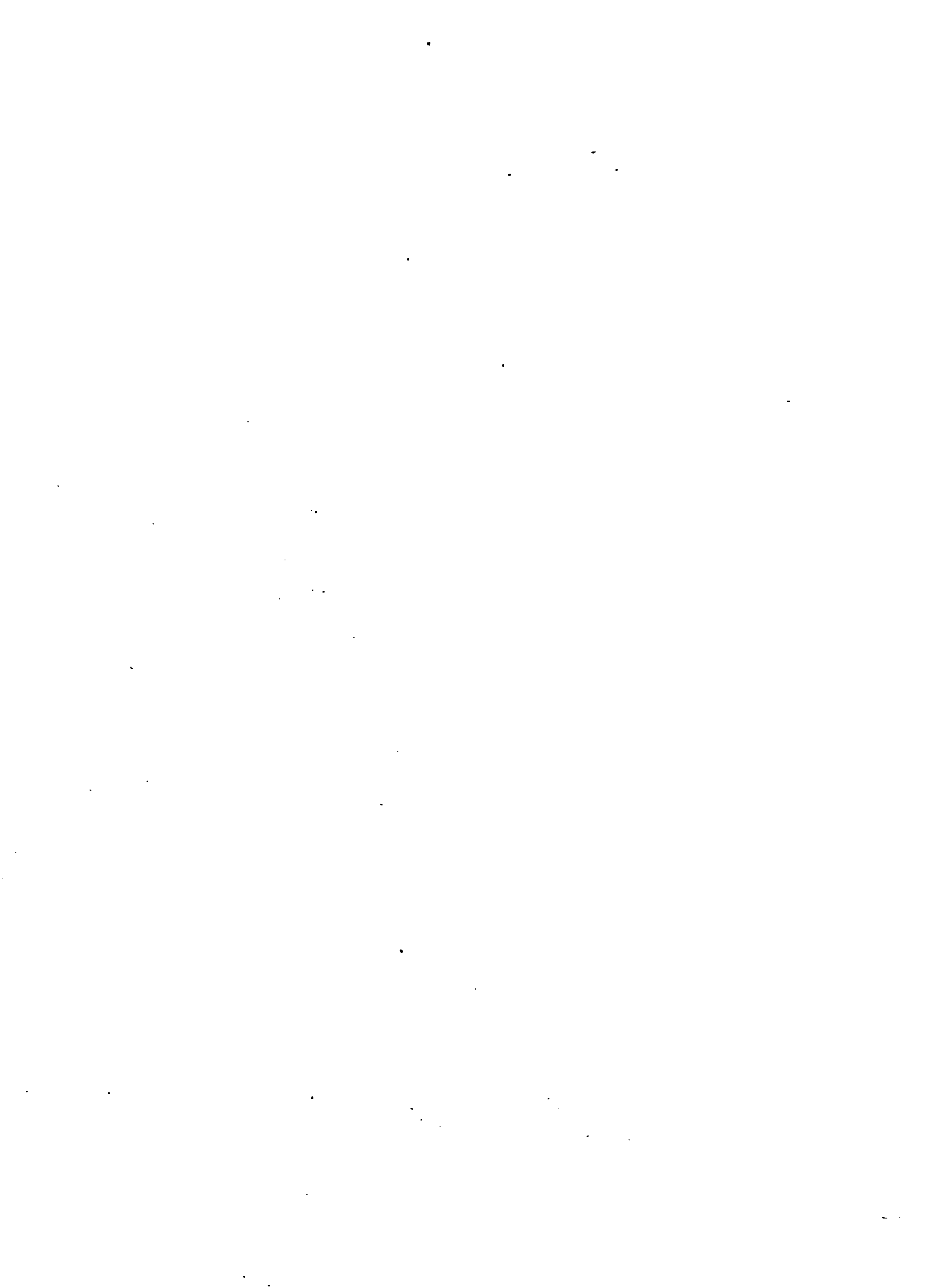
Pr. 8s.

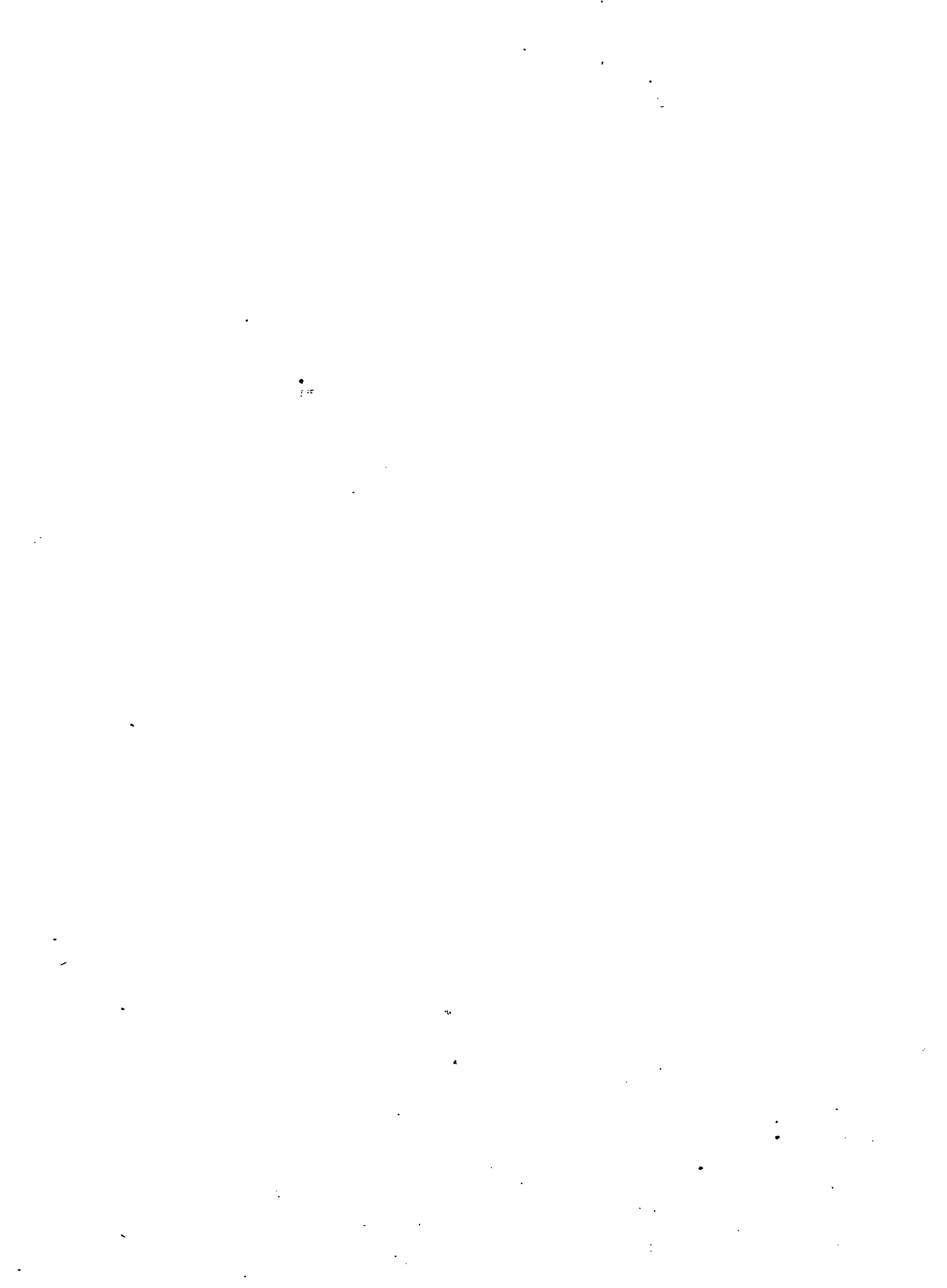
L O N D O N

*Printed & Sold by R. Bremner opposite
Somerset House in the*

S T R A N D .







VIOLINO PRIMO.

QUARTETTO I

Allegro

Menuetto

Trio

Adagio Poco

VIOLINO PRIMO

QUARTETTO II

Allegro

Menuetto

Trio

M. D. C.

Adagio

VIOLINO PRIMO

The first section of the score consists of four staves of music. The key signature is two sharps (F# and C#), and the time signature is 3/4. The music is highly melodic and technical, featuring numerous slurs, ornaments, and dynamic markings such as *h* (hairpins) and *P* (piano).

Menuetto

The Minuet section begins with a 3/4 time signature and a 4-measure rest. The key signature remains two sharps. The music is characterized by a steady, rhythmic pattern with dynamic markings of *P*, *fe*, and *f*.

Trio

The Trio section starts with a 3/4 time signature and a 4-measure rest. The key signature changes to one sharp (F#). The music is more rhythmic and features a consistent eighth-note pattern with dynamic markings of *P* and *fe*.

Finale Presto

M. D. C.

The Finale Presto section begins with a 2/4 time signature and a 4-measure rest. The key signature is two sharps. The music is fast and rhythmic, featuring a variety of dynamic markings including *P*, *fe*, *f*, and *h*, along with first endings marked with a '1'.

VIOLINO PRIMO

QUARTETTO III

All.^o molto

The first section of the score consists of ten staves of music. It begins with a treble clef, a key signature of two flats (B-flat and E-flat), and a 2/4 time signature. The tempo is marked 'All.^o molto'. The music is characterized by intricate rhythmic patterns, including sixteenth and thirty-second notes, and frequent use of slurs and ties. Dynamic markings include piano (p), fortissimo (fe), mezzo-forte (m), and forte (f). The section concludes with a double bar line.

Menuetto

Trio

The second section, labeled 'Menuetto', starts with a 3/4 time signature. It is followed by the 'Trio' section, which begins with a 4/4 time signature. The music features a mix of eighth and sixteenth notes, with some triplet markings. Dynamic markings include piano (p) and 'Men.D.C.' (Meno Dedicato). The section ends with a double bar line.

Adagio

Con Sordini

The third section, 'Adagio', is in C major and begins with a common time signature (C). It is marked 'Con Sordini' (with mutes). The tempo is slower, and the music is more melodic and expressive. Dynamic markings include forte (f), mezzo-forte (m), and pianissimo (pp). The section concludes with a double bar line.

VIOLINO PRIMO

7

fe P PP

Menuetto

pizzicato

Pizzi.

Colarco

Pizzi. Colarco

P fe

Trio

fe Var. 1

m

Var. 2

Var. 3

1 3

3 m

Mer. D. C.

Finale

Allegro

m

2

2

1

QUARTETTO IV *Presto*

The first section of the quartet consists of six staves of music. It begins with a treble clef and a 6/8 time signature. The tempo is marked *Presto*. The music is characterized by rapid sixteenth-note passages and dynamic contrasts. Dynamics include *fe* (for *fortissimo*), *P* (for *piano*), *f* (for *forte*), and *m* (for *mezzo*). There are also markings for *F* (for *forzando*) and *F^e* (for *forzando e*). The section concludes with a double bar line.

f Menuetto

The Minuet section consists of two staves of music. It begins with a treble clef and a 3/4 time signature. The tempo is marked *f* (for *allegro*). The music features a rhythmic pattern of eighth and sixteenth notes, with several triplet markings. The section concludes with a double bar line.

f Trio

The Trio section consists of two staves of music. It begins with a treble clef and a 3/4 time signature. The tempo is marked *f* (for *allegro*). The music features a rhythmic pattern of eighth and sixteenth notes. The section concludes with a double bar line.

VIOLINO PRIMO

Adagio

m *P* *PP*

Menuetto

P *fe p* *fe*

Trio

m M.D.C.

Allegro

m

QUARTETTO V *P*
Presto

The first section of the Quartetto V is written in G major, 3/8 time. It begins with a dynamic of piano (*p*) and a tempo marking of *Presto*. The music consists of several staves of sixteenth-note and eighth-note passages, with some measures marked with a forte (*f*) dynamic.

Adagio

The second section of the Quartetto V is written in G major, 3/8 time. It begins with a dynamic of piano (*p*) and a tempo marking of *Adagio*. The music consists of several staves of eighth-note and quarter-note passages, with some measures marked with a forte (*f*) dynamic.

Presto

F^e

The first section of the Menuetto is written in G major, 3/4 time. It begins with a dynamic of piano (*p*) and a tempo marking of *Presto*. The music consists of several staves of eighth-note and quarter-note passages, with some measures marked with a forte (*f*) dynamic.

Menuetto

The second section of the Menuetto is written in G major, 3/4 time. It begins with a dynamic of piano (*p*) and a forte (*f*) dynamic marking. The music consists of several staves of eighth-note and quarter-note passages.

P

F^e

The third section of the Menuetto is written in G major, 3/4 time. It begins with a dynamic of piano (*p*) and a forte (*f*) dynamic marking. The music consists of several staves of eighth-note and quarter-note passages, with some measures marked with a forte (*f*) dynamic.

The first section of the Trio is written in G major, 3/4 time. It begins with a dynamic of piano (*p*) and a forte (*f*) dynamic marking. The music consists of several staves of eighth-note and quarter-note passages, with some measures marked with a forte (*f*) dynamic.

Trio

The second section of the Trio is written in G major, 3/4 time. It begins with a dynamic of piano (*p*) and a forte (*f*) dynamic marking. The music consists of several staves of eighth-note and quarter-note passages, with some measures marked with a forte (*f*) dynamic.

Largo

M.D.C.

The Cantabile Allabreve section is written in G major, 3/4 time. It begins with a dynamic of piano (*p*) and a forte (*f*) dynamic marking. The music consists of several staves of eighth-note and quarter-note passages, with some measures marked with a forte (*f*) dynamic.

Cantabile Allabreve

VIOLINO PRIMO

First section of the piece, consisting of six staves of music. The key signature is G major (one sharp). The music features various ornaments (trills, mordents) and fingerings (1, 3, h). A fermata is present at the end of the second staff.

Menuetto
Second section of the piece, consisting of two staves of music. The time signature is 3/4. The music features ornaments and fingerings (1, 3, h).

Trio
Third section of the piece, consisting of one staff of music. The time signature is 3/4. The music features ornaments and fingerings (1, 3, h).

Collarco
Fourth section of the piece, consisting of one staff of music. The time signature is 3/4. The music features ornaments and fingerings (1, 3, h).

Finale
Fifth section of the piece, consisting of one staff of music. The time signature is 2/4. The music features ornaments and fingerings (1, 3, h).

Presto
Sixth section of the piece, consisting of one staff of music. The time signature is 2/4. The music features ornaments and fingerings (1, 3, h).

Final section of the piece, consisting of one staff of music. The time signature is 2/4. The music features ornaments and fingerings (1, 3, h).

Final section of the piece, consisting of one staff of music. The time signature is 2/4. The music features ornaments and fingerings (1, 3, h).

Final section of the piece, consisting of one staff of music. The time signature is 2/4. The music features ornaments and fingerings (1, 3, h).

M. D. C.

QUARTETTO VI

Adagio

The first section of the quartet consists of four staves of music. The first staff is the main melody, followed by three variations: Var. 1, Var. 2, and Var. 3. The music is written in a 2/4 time signature and features a variety of rhythmic patterns, including eighth and sixteenth notes, and rests. Dynamics such as *mf* and *h* are indicated throughout. The section concludes with a double bar line.

Menuetto

The second section, titled "Menuetto", consists of three staves of music. The first staff is the main melody, followed by two staves of accompaniment. The music is written in a 3/4 time signature and features a variety of rhythmic patterns, including eighth and sixteenth notes, and rests. Dynamics such as *F*, *P*, and *PP* are indicated throughout. The section concludes with a double bar line.

VIOLINO PRIMO

P
Trio



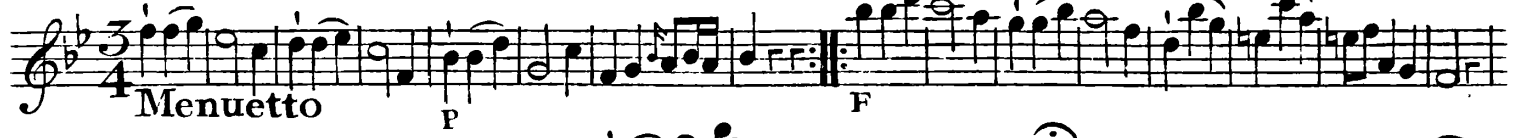
Presto



Fin.



Menuetto



Presto



