

# Symphonie en mi bémol

Basses

François-Joseph GOSSEC

(1734-1829)

## I

Largo

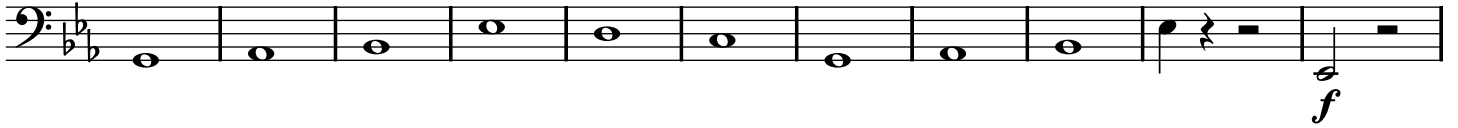
Segue

Basses  
II

Allegro molto



78



89



98



110



118



126



134



142



149



156



Basses  
III

## Allegretto Pastorale gracioso

1

*p*

9

*f*

17

*p* *f*

24

*p* *f*

39

*p* *f*

47

1

56

*f* *Segue*

## IV

## Presto

12

*f*

32

*f*

52

1 1

67

1