

Viola

Vo disperato

La Clemenza di Tito, Act III, Scene 6

Johann Adolf Hasse

Measures 1-11: The first staff of music in 3/8 time, starting with a key signature of one flat. It features a series of eighth notes and quarter notes, with a melodic line that rises and then descends.

12

Measures 12-22: Continuation of the musical line. Measure 12 begins with a sharp sign. The notation includes eighth notes, quarter notes, and rests.

23

Measures 23-34: Continuation of the musical line. Measure 23 begins with a sharp sign. The notation includes eighth notes, quarter notes, and rests.

35

Measures 35-45: Continuation of the musical line. Measure 35 begins with a sharp sign. The notation includes eighth notes, quarter notes, and rests.

46

Measures 46-57: Continuation of the musical line. Measure 46 begins with a sharp sign. A fermata with a '2' above it is present in measure 57.

58

Measures 58-68: Continuation of the musical line. Measure 58 begins with a sharp sign. The notation includes eighth notes, quarter notes, and rests.

69

Measures 69-80: Continuation of the musical line. Measure 69 begins with a sharp sign. The notation includes eighth notes, quarter notes, and rests.

81

Measures 81-90: Continuation of the musical line. Measure 81 begins with a sharp sign. The notation includes eighth notes, quarter notes, and rests.

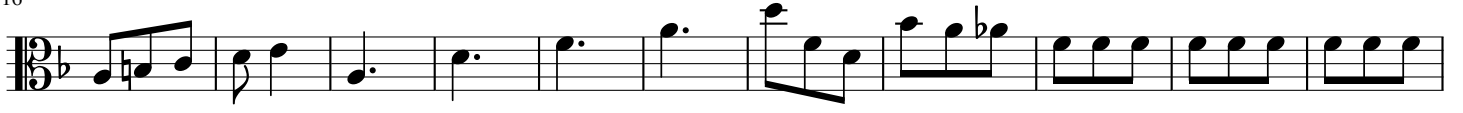
91

Measures 91-103: Continuation of the musical line. Measure 91 begins with a sharp sign. A fermata with a '2' above it is present in measure 92.

104

Measures 104-114: Continuation of the musical line. Measure 104 begins with a sharp sign. The notation includes eighth notes, quarter notes, and rests.

116



127

