

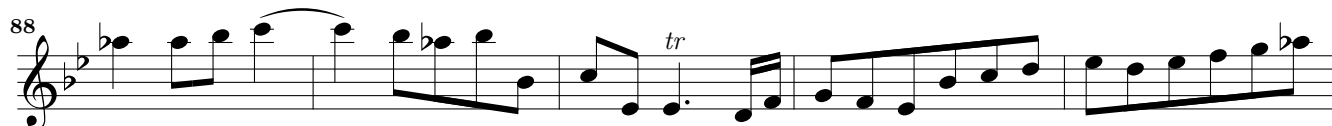
Sonata IV

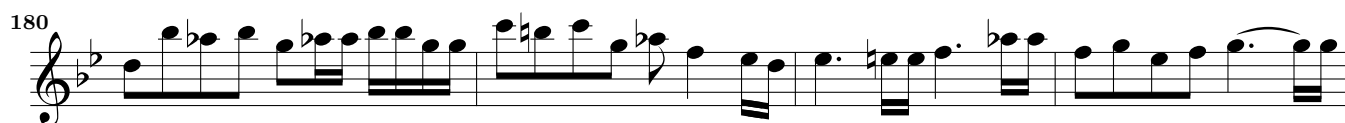
Poco Adagio

Musical score for Sonata IV, *Poco Adagio* section, measures 1-31. The score is written in treble clef, 3/4 time signature, and B-flat major. It consists of ten staves of music. The first staff (measures 1-5) begins with a fermata over the first measure. The second staff (measures 6-11) continues the melodic line. The third staff (measures 12-17) features a fermata over the first measure. The fourth staff (measures 18-24) continues the melody. The fifth staff (measures 25-30) features a fermata over the first measure. The sixth staff (measures 31) ends with a fermata over the final measure.

Allegro

Musical score for Sonata IV, *Allegro* section, measures 38-52. The score is written in treble clef, common time (C), and B-flat major. It consists of five staves of music. The first staff (measures 38-40) begins with a fermata over the first measure. The second staff (measures 41-43) features a fermata over the first measure. The third staff (measures 44-46) continues the melodic line. The fourth staff (measures 47-48) features a fermata over the first measure. The fifth staff (measures 49-52) continues the melody.

*Lento/Adagio**Forte*

*Vivace*

Musical score for Violino, measures 187 to 224. The score is written in treble clef with a key signature of two flats (B-flat and E-flat). The music features a variety of rhythmic patterns, including eighth and sixteenth notes, and rests. Measure 215 contains a whole rest. The piece concludes with a double bar line at the end of measure 224.