

# Missa I

## Requiem

## *Pro die Depositionis*

J.A. Kobrich

Horn 2  
in F

*Adagio*

6

10 *Dolce* *Adagio*

24

## Kyrie

*Moderato*

7

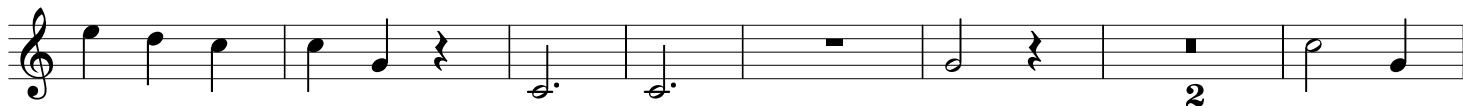
14

21 *Dolce*

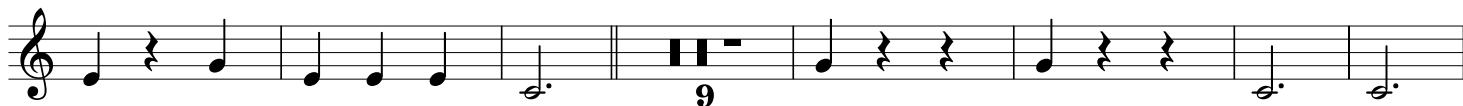
Fine Kyrie da capo



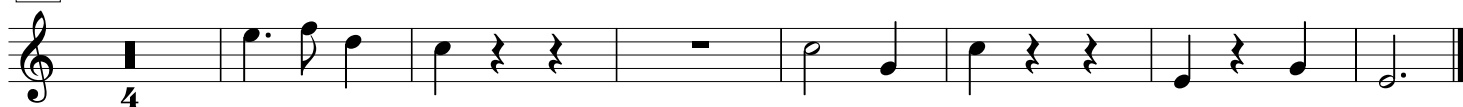
29



38



54

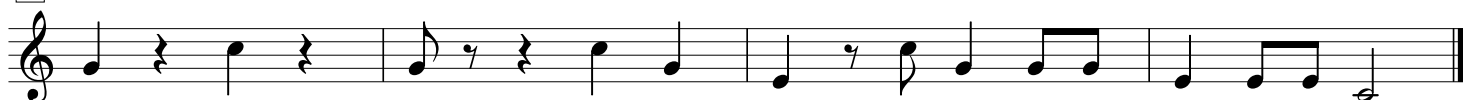


## Sanctus

*Adagio*



7



## Benedictus

*Vivace moderato*

*Dolce*



65



68

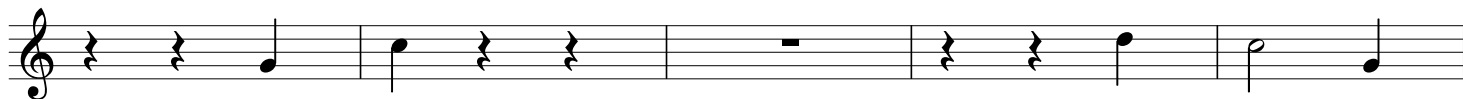


# Agnus Dei

*Adagio*



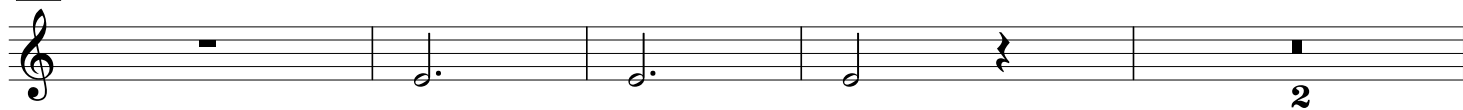
6



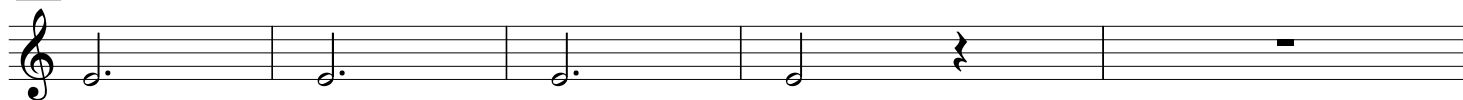
11



17



23



28



33



38



# Communio

*Dolce Moderato*

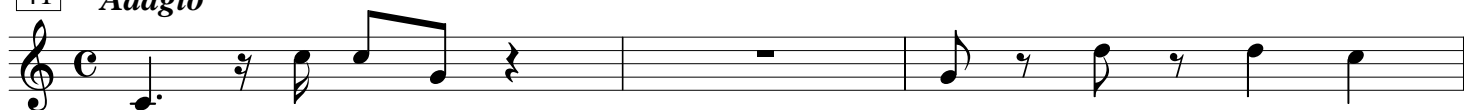


33



41

*Adagio*



44



47



50

*Moderato*



57

