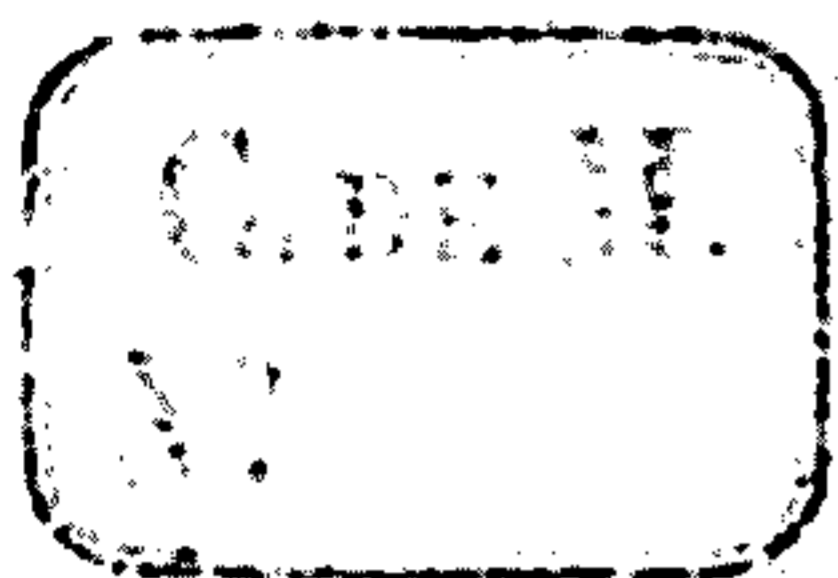


# OEUVRES



POUR LE PIANO

DE

# J. L. BATTMANN

Op. 239.	Indiana, fantaisie-valse . . . . .	MARCAILHOU.
— 241.	Le Torrent, fantaisie-valse. . . . .	—
<i>f</i> 243.	Silvio Pellico, transcription variée. . . . .	MASINI.
— 245.	Une Fleur pour réponse, 11 <sup>e</sup> rêverie . . . . .	—
— 246.	Norma, fantaisie. . . . .	BELLINI.
— 247.	Pour faire un nid, transcription. . . . .	ARNAUD.
— 251.	Fantaisie-Valse, pot-pourri. . . . .	. . . . .
— 252.	Un Soupir de Faust, pensée fugitive. . . . .	SERVEZ.
— 253.	Le Cor des Alpes, fantaisie. . . . .	PROCH.
— 255.	La Sonnambula, transcription. . . . .	BELLINI.
— 256.	Se boudier, fantaisie-caprice . . . . .	ARNAUD.
— 257.	Carnaval de Venise, variations . . . . .	PAGANINI.
— 258.	Prière de Moïse, transcription. . . . .	ROSSINI.
— 259.	Perles mélodiques, fragment des opéras <i>Parisina, Beatrice di Tenda et Sémiramis</i> . . . . .	. . . . .
— 260.	Barcarolle d'Oberon. . . . .	WEBER.

CHAQUE : 6 FRANCS

PARIS

Alfred IKELMER et C<sup>ie</sup>, Éditeurs-Commissionnaires,

4, BOULEVARD POISSONNIÈRE, 4.

Propriété pour la France et l'Étranger.

C. DE M.  
N°

# SILVIO PELLICO.

(de Masini)

Transcription variée.

J. L. BATTMANN.

Op. 243.

à Mademoiselle Marguerite d'ANDELARRE.

And.<sup>te</sup> melancolico.

PIANO.

mf dim. p f

Lento. Vivo. in Tempo.

p f dim. e roll. p

Ped. Ped.

*afflito con dolcezza.*

marquez bien la mélodie, mais faites l'accomp! très doux.

Ped. Ped. Ped. Ped.

Ped. Ped. Ped. Ped. Ped. Ped.

*dolce.*

Ped ⊕ Ped ⊕ Ped ⊕ Ped

This system contains four measures of music. The upper staff features a melodic line with a long slur. The lower staff has a rhythmic accompaniment. Pedal markings are placed below the first, second, third, and fourth measures.

*tres doux, ral.* *a Tempo.* *mf*

⊕ Ped ⊕ Ped ⊕ Ped ⊕ Ped ⊕

This system contains five measures. The tempo changes from *tres doux, ral.* to *a Tempo.* in the fourth measure. The dynamic is *mf*. Pedal markings are present under the second, third, fourth, and fifth measures.

*animez un peu.* *cresc.*

Ped ⊕ Ped ⊕ Ped ⊕ Ped ⊕

This system contains five measures. The instruction *animez un peu.* is in the first measure, and *cresc.* is in the fourth. Pedal markings are present under the first, second, third, and fourth measures.

*animez toujours.*

Ped ⊕ Ped ⊕ Ped ⊕ Ped ⊕ Ped ⊕

This system contains six measures. The instruction *animez toujours.* is in the fourth measure. Pedal markings are present under the first, second, third, fourth, fifth, and sixth measures.

ff

Ped

mf

Ped

ff espress..

mf

Ped

cresc.

Ped

ff

ff

Ped

Tempo 1<sup>o</sup> ma più animato.

*p* marquez toujours bien la mélodie...

Ped.      ⊕ Ped.      ⊕ Ped.      ⊕ Ped.      ⊕

Ped.      ⊕ Ped.      ⊕ Ped.      ⊕ Ped.      ⊕

Ped.      ⊕ Ped.      ⊕ Ped.      ⊕

Ped.      ⊕ Ped.

First system of a piano score. It consists of two staves: a treble clef staff on top and a bass clef staff on the bottom. The music features complex chords and melodic lines. There are four measures in this system. Pedal markings, represented by a circle with a cross inside, are placed below the bass staff at the beginning of the second, third, and fourth measures. The word "cresc." is written above the treble staff in the third measure.

Second system of the piano score. It also consists of two staves. The first measure is marked with a forte dynamic *ff*. The second measure contains the instruction *avec énergie.* followed by *suivies les petites notes d'accomp! plus piano que la mélodie.* There are four measures in total. Pedal markings are present at the start of the first, second, and third measures. Fingerings (1, 3, 5) are indicated for some notes in the bass staff.

Third system of the piano score. It consists of two staves. There are four measures. Pedal markings are located at the beginning of the first, second, and third measures. The music continues with intricate chordal textures.

Fourth system of the piano score. It consists of two staves. There are four measures. Pedal markings are at the beginning of the first, second, third, and fourth measures. The word "cresc." is written above the treble staff in the third measure. Fingerings (1, 2, 3) are indicated for notes in the bass staff.

6

*f*

Ped V

⊕ Ped

⊕ Ped V

8

Ped V

⊕ Ped

⊕ Ped

8

Ped V

⊕ Ped V

⊕ Ped

8

Ped V

1 3 2 1 5 2 1 3

⊕ Ped V

*molto cresc.*

8

*poco rit. e dim.*

*p*

Ped V

⊕ Ped V

⊕ Ped

V

8

Ped

8

*rinf.*

*sempre più dimin. e rit.*

Ped

Ped

8

Ped

Ped

8-7

*p*

*dolcissimo.*  
*Prenez les deux Pédales.*

*pp*

Ped

Ped V

2 Ped.

8-7

*pp*

*molto lento.*

*pp*