

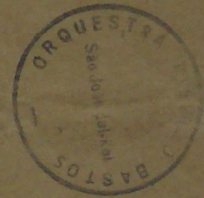
Altus

05321

Matinas da Conceição

por

Francisco Manoel da Silva



Ribeirão Preto

Resp. 1<sup>o</sup>

Allos das cantinas

11

Hodie concepta est Hodie  
 concepta est Beata Virgo Maria ex pro  
 genie ex-progenie ex progenie Da-vid ex progenie  
 ex progenie ex progenie Da-vid ex progenie ex pro  
 genie

*Alleg.* Cre- denti bus per quam  
 salus es mundi Cre denti bus es a paruit  
 a paruit per quam salus salus mundi salus mun- di  
 lucem de di es se cu lo de di se cu lo de di  
 se cu lo

Volte logo p<sup>a</sup> verso Recit.

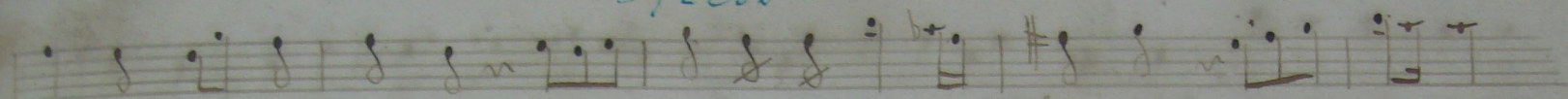


1730

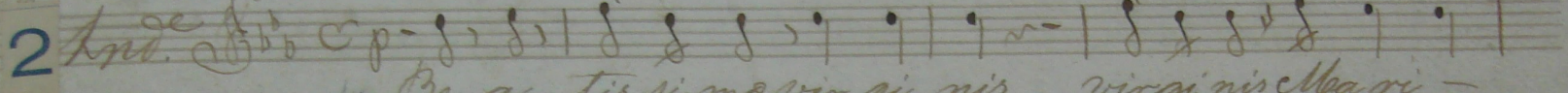
Non ceptionem Beatae Mariae virginis  
 cum gaudio celestium  
 cum gaudio celestium  
 cum gaudio celestium  
 Non ceptionem Beatae Mariae virginis  
 cum gaudio celestium  
 Beatae Mariae virginis cum gaudio  
 celestium  
 Non ceptionem Beatae Mariae virginis  
 cum gaudio celestium

...  
 ...  
 ...  
 ...  
 ...  
 ...  
 ...  
 ...  
 ...  
 ...

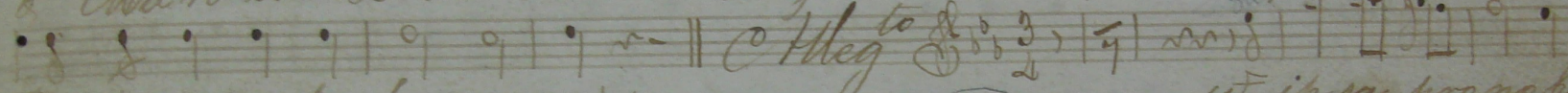
Alto



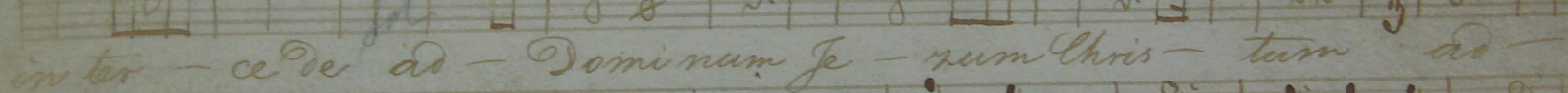
bre-mus cum-gaudi-o coe-bre-mus cum-gaudio  
ca-le-bre-mus. *Alleg<sup>to</sup>, e segue Persi. 2°*



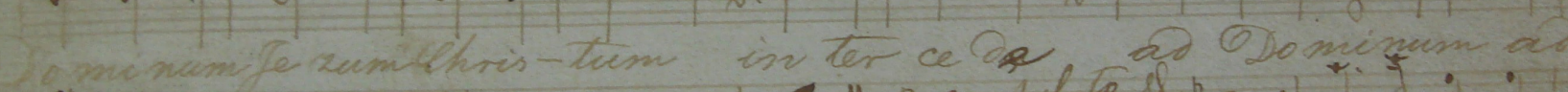
2 *And.* Be-a-tis-si-me vir-gi-nis vir-gi-nis Ma-ri-  
a Ma-ri-a Be-a-tis-si-me vir-gi-nis Ma-ri-a con-cep-ti-o-nem de-vo-



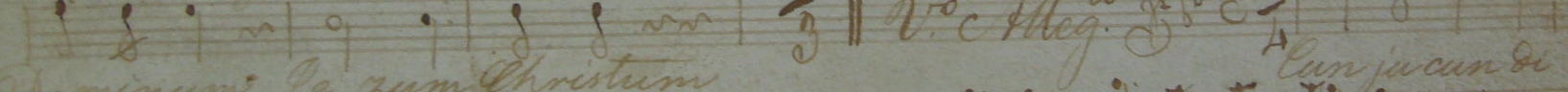
tu-si-ma coe-bre-mus *Alleg<sup>to</sup>* ut ip-sa pro-no-bis



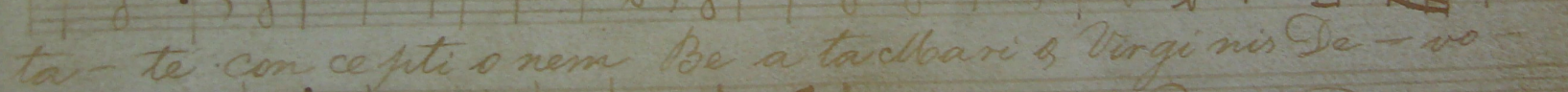
in-ter-ce-de ad-Domi-num Je-sum Chris-tum ad-



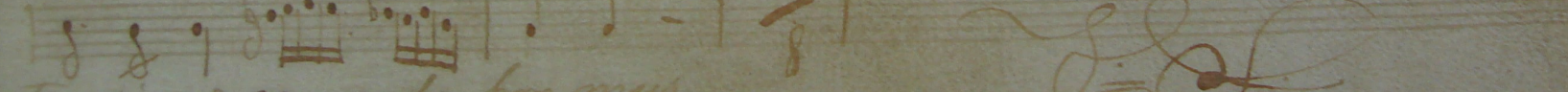
Do-mi-num Je-sum Chris-tum in-ter-ce-de ad Do-mi-num ad



Do-mi-num Je-sum Christum *Alleg<sup>to</sup>* Cum ju-can-de



ta-te con-cep-ti-o-nem Be-a-ta Ma-ri-a vir-gi-nis De-vo-



tu-si-ma coe-bre-mus



*re*  
 De vo tis si me De vo tis si me ce le bre mus ce le bre mus de vo  
 tis si me ce le bre mus de vo tis si me ce le bre mus  
 ce le bre mus ce le bre mus Cum ju cun di ta te con  
 ce pti o nem Be a ta Ma riæ vir gi nis De vo tis si me ce le  
 bre mus De vo tis si me De vo tis si me ce le bre mus  
 De vo tis si me ce le bre mus ce le bre mus ce le bre mus de vo tis si me  
 ce le bre mus ce le bre mus ce le bre  
 mus ce le bre mus ce le bre mus

Segue Responsorio 3<sup>o</sup>

Resp. 3<sup>o</sup>

Musical notation on the right page, including a treble clef, a common time signature (C), and a 2/4 time signature. The lyrics are partially visible:

De ignis  
 Vir gi nis  
 ce la  
 Do mi nus  
 pa  
 puit res  
 rem

Musical notation and handwritten notes at the bottom of the right page, including a treble clef and a 2/4 time signature.

Resp. 3<sup>o</sup>  
Alto

glo ri o sa vir gi nis vir gi nis et ba ri a con ce pti o nem  
 di gnis si ma re co la - mus glo ri o sa vir gi nis  
 vir gi nis et ba ri a con ce pti o - nem di gnis si ma re co la - mus  
 re co la - mus re co la - mus cu - jus cu - jus  
 Do mi nus ho mi li ta tem res - perit hu mi li ta tem res -  
 pe - rit cu jus Do mi nus hu mi li ta tem res -  
 perit res pe - rit quod An gi lo An nun ti ante con ce pti sal va to -  
 rem sal va to rem mun di

Gloria Patri  
 G. C. M.

glo ri a Pa tri Pa tri et fi li o et Spi ri tu i san - to

Prop. 4<sup>o</sup>

*Allegro* *Concepiō* *gloriosa*

virginis oes clara ex semine abrahe

orte de tribu iudaica ex tripe dauid ex tripe dauid

viduus cuius vita cuncta il lustra cuius

vita vita inclita cuncta il lustra e clara vita

inclita il lustra e clara cuius vita oes inclita

cuncta il lustra e clara cuius vita vita

inclita il lustra e clara

Segue Prop. 5<sup>o</sup>

*Respi. 5<sup>o</sup> Ad<sup>o</sup>*

Handwritten musical notation on a five-line staff. The notes are mostly quarter and eighth notes. The lyrics "Cum ju cun di ta te con ce pti onem" are written below the staff.

Handwritten musical notation on a five-line staff. The lyrics "Be a ta cla ria ce - le bra mus cun ju cun di ta te con ce pti" are written below the staff.

Handwritten musical notation on a five-line staff. The lyrics "o nem Be a ta cla ri o, ce le bra mus" are written below the staff.

Handwritten musical notation on a five-line staff. The lyrics "i - pra pro - no bis in ter" are written below the staff. The tempo marking "Ad<sup>o</sup>" is written above the staff.

Handwritten musical notation on a five-line staff. The lyrics "ce - da in ter ce da at" are written below the staff.

Handwritten musical notation on a five-line staff. The lyrics "Do mi num Je sum Chri stum in ter ce da ad Do mi num Je sum" are written below the staff.

*Choris tum*

*Verso Tacet // Deo*

*Segue Respi 6<sup>o</sup> na Lancia*





Propi. 40

Musical staff with treble clef, key signature of one sharp (F#), and time signature of 2/4. The melody begins with a half note G4, followed by quarter notes A4, B4, and C5. There are various rests and accidentals throughout the staff.

Be a tam me - di - cens om nes  
ge ne ra ti o nes

Be a tam me di - cen om nes  
ge ne ra ti o - nes om nes ge ne ra ti o - nes ge ne

ra ti o nes ge ne ra ti o nes

mi hi Do - mi nus ma - gna ma gna qui po - tens est  
fe cit mi hi Do mi nus qui po tens est mi hi Do mi nus

qui po tens est et san tum no men e jus et san tum no men e jus

qui a fe cit mi hi Do mi nus ma gna qui po tens est et san tum no men

e jus et san tum no men e jus qui a fe cit mi hi Do mi nus

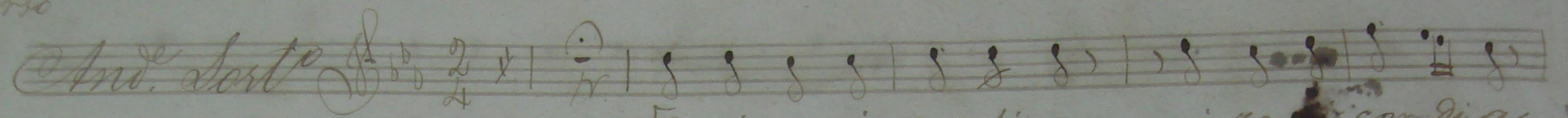
ma gna qui po tens es

ma gna qui po tens es

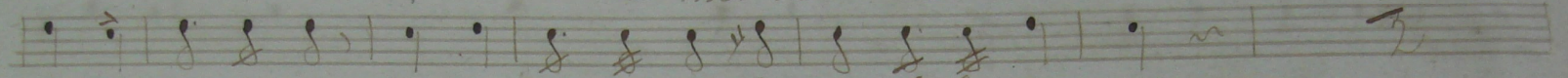
ma gna qui po tens es

Segue logo

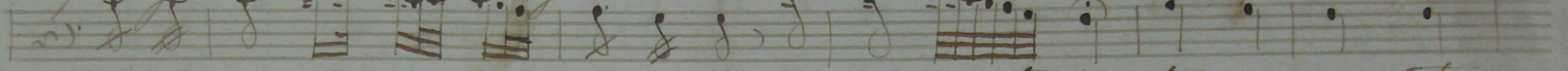
Verse

*And. Forto* 

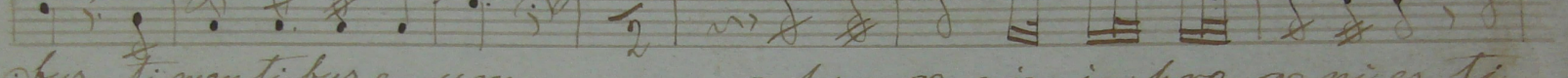
Et mi re ri cordi a mi re cor di a



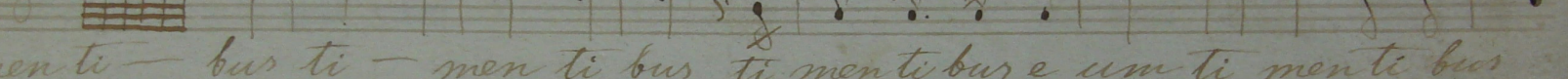
a pro ge nie in pro ge nie ti men ti bus e um



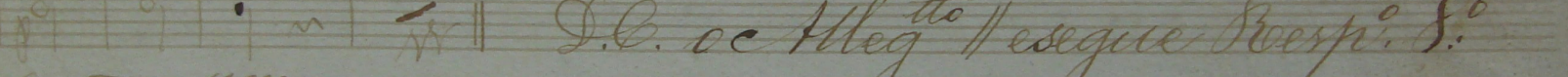
a pro ge nie in pro ge nies ti men ti bus ti - men ti



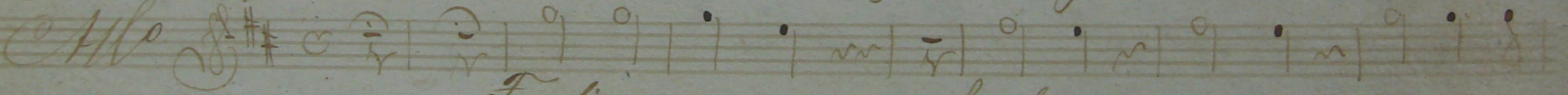
bus ti men ti bus e um a pro ge nie in pro ge nies ti



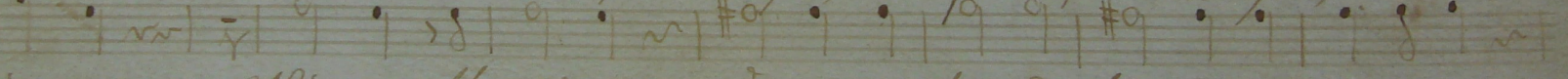
men ti - bus ti - men ti bus ti men ti bus e um ti men ti bus



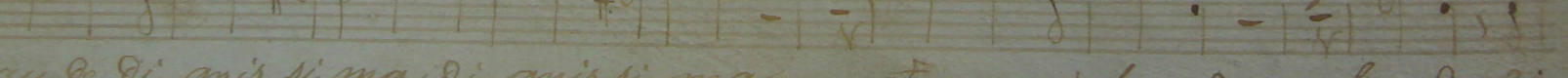
e - um

*Allo* 

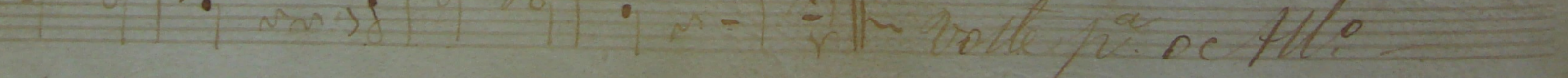
Fe lix nam que, fe lix nam que, es sacra



vir go Vir go Ma ri a Et om ni laude laude di gnis si ma



laude di gnis si ma di gnis si ma Et om ni laude laude di

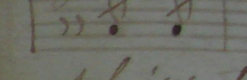


gnis si ma

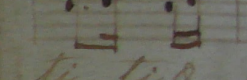
*Allo*



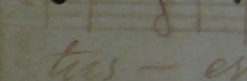
sol jus ti



sol jus ti



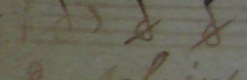
ti ti q



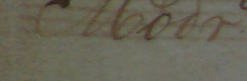
tus - er



li tis do



sol jus

*Chor.* 

sol jus



sol jus



Gloria



