

Contrabass

# 隨風飛翔

Cheng-Shiun

♩ = 68

子題一: Pastorale

6

*p*

Detailed description: The first staff of music, measures 1-10, is in bass clef with a key signature of two flats and a 4/4 time signature. It begins with a six-measure rest, followed by a series of quarter notes and eighth notes. A dynamic marking of *p* (piano) is placed below the staff.

11

*mp*

Detailed description: The second staff, measures 11-16, continues the piece. It features a seven-measure rest followed by eighth notes and quarter notes. A dynamic marking of *mp* (mezzo-piano) is placed below the staff.

17

4

Detailed description: The third staff, measures 17-25, starts with an eighth note, followed by a four-measure rest, and then continues with eighth notes and quarter notes.

26

Detailed description: The fourth staff, measures 26-29, consists of quarter notes and eighth notes.

30

Detailed description: The fifth staff, measures 30-33, features a complex rhythmic pattern with many eighth notes and a key signature change to one flat.

34

10

*p*

Detailed description: The sixth staff, measures 34-43, begins with an eighth note, followed by a ten-measure rest, and then a series of eighth notes. A dynamic marking of *p* is placed below the staff.

47

7

Detailed description: The seventh staff, measures 47-53, consists of a single seven-measure rest.

♩ = 80

54

4

*mp*

Detailed description: The eighth staff, measures 54-61, starts with a four-measure rest, followed by eighth notes and quarter notes. A dynamic marking of *mp* is placed below the staff.

62

Detailed description: The ninth staff, measures 62-70, continues with eighth notes and quarter notes.

67



72



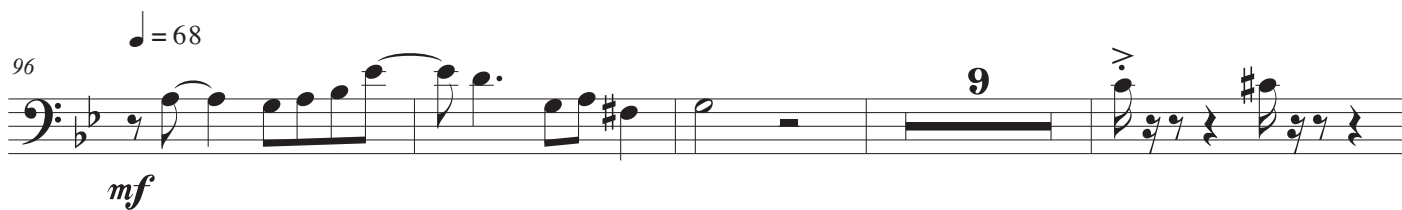
78



90



96

*mf*

109



113



120



129



136

142

146

151

$\text{♩} = 68$

165

169

173

177

181