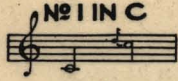


DUET ARRANGEMENT



DUET
Soprano and Alto or
Tenor and Baritone
75¢

TRUSTING

Sacred Song

THE WORDS BY

WM. FELTER

The Music By

THURLOW LIEURANCE

PRICE 60 CENTS

DUET FOR SOP., OR TENOR,
AND ALTO OR BARITONE 60¢

CHORUS FOR
MIXED VOICES 20¢

PUBLISHED BY
J.W. JENKINS SONS MUSIC CO.
KANSAS CITY, MO.

PRINTED IN U.S.A.



* "TRUSTING"

WM. FELTER

THURLOW LIEURANCE

And^t mod^{to}

Piano introduction in G minor, 3/4 time. The music consists of two staves. The right hand plays chords and moving lines, while the left hand provides a steady bass accompaniment. The dynamic marking is *mf*.

Con espressione

Vocal and piano accompaniment for the first line of lyrics. The vocal line is on a single staff, and the piano accompaniment is on two staves. The lyrics are: "I am trust-ing in the prom-ise Christ has made to". The dynamic marking is *mf dolce*.Vocal and piano accompaniment for the second line of lyrics. The vocal line is on a single staff, and the piano accompaniment is on two staves. The lyrics are: "me, I can hear His pray'rs of an-guish,". The dynamic marking is *mf dolce*.

Copyright MCMVIII by J. W. Jenkins Son's Music Co., Kansas City, Mo.

*International
copyright secured*

*"TRUSTING" is set to the melody of "ALONE" published only in the book "Five Songs for a Medium Voice" by T. Lieurance

from Geth-sem-a - ne. I am wait-ing in the shadows

To my Sa- viour cling, — Wait-ing, wait-ing, trust - ing still,

He will com - fort bring.

rall. *ppp*

When the bus - y day is o - ver, When the night is

mf a tempo

still, Thou who marks the spar - rows' fall, —

Be my com-fort still. In the lone-ly hours of sor-row

Ben - e - diet - ion bring, — Thou, O Christ, the

Rock of A - ges, Trust - ing - ly I cling.

rall. *ppp*

