

Herold — Zampa Overture

Posaune I.

First staff of music for Horn I. It begins with a treble clef, a key signature of two sharps (F# and C#), and a 3/4 time signature. The music features a series of eighth notes and quarter notes. A dynamic marking of *ff* (fortissimo) is present. There are accents over the notes B and G. Above the staff, the letters B, 2, and 4 are written, indicating fingerings or breath marks.

Second staff of music for Horn I, continuing the melodic line with eighth and quarter notes.

Third staff of music for Horn I. It contains rests for measures 17, 23, 20, and 8. Above the staff, the tempo markings "Più lento." and "Un poco più vivo. $\text{♩} = 100.$ " are written. The letters C, D, and 8 are also present above the staff.

Fourth staff of music for Horn I. It begins with a treble clef and a key signature of two sharps. The tempo marking "Un poco più animato. $\text{♩} = 116.$ " is written above the staff. A dynamic marking of *ff* is present. Measure numbers 9, 10, and 11 are indicated below the staff.

Fifth staff of music for Horn I. It features a melodic line with eighth notes and quarter notes. A dynamic marking of *ff* is present. Above the staff, the letters 4, E, and 14 are written.

Sixth staff of music for Horn I. It consists of a series of eighth notes. A dynamic marking of *pp* (pianissimo) is present.

Seventh staff of music for Horn I. It consists of a series of eighth notes.

Eighth staff of music for Horn I. It begins with a treble clef and a key signature of two sharps. The tempo marking "Più mosso. $\text{♩} = 132.$ " is written above the staff. A dynamic marking of *ff* is present. Above the staff, the letter F and the number 4 are written.

Ninth staff of music for Horn I. It features a melodic line with eighth notes and quarter notes. A dynamic marking of *ff* is present. Above the staff, the letters 8 and G are written.

Tenth staff of music for Horn I. It consists of a series of eighth notes.

Eleventh staff of music for Horn I. It features a melodic line with eighth notes and quarter notes. A dynamic marking of *ff* is present.

Twelfth staff of music for Horn I. It features a melodic line with eighth notes and quarter notes. A dynamic marking of *ff* is present.

Posaune II.

B *ff* *ff* *ff*

C *ff* **D** *ff*

E *ff*

F *ff* *(a 2)*

G *ff*

ff *ff*

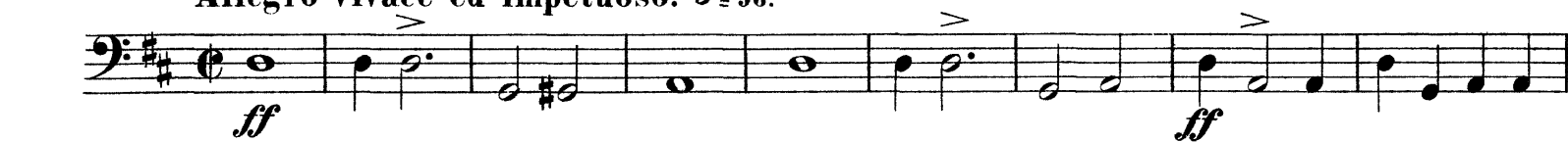
Tempo and Performance Instructions:
Più lento $\text{♩} = 17$
Un poco più lento $\text{♩} = 100$
Un poco più animato. $\text{♩} = 116$
Più mosso. $\text{♩} = 132$

Violin 1 (Vn.1) Section:
Measures 9, 10, 11

Louis Herold Zampa Overture

Bassposaune.

Allegro vivace ed impetuoso. $\text{♩} = 96.$



Andante misurato. $\text{♩} = 84.$



Un poco più mosso.

Andante, non lento. $\text{♩} = 100.$



Poco a poco animato. Animato. Ob. I u. Clar. I.



accel. poco a poco

pf cresc.

più f

Allegro vivace assai con grande forza. $\text{♩} = 116.$



Herold — Zampa Overture

Bassposaune.

Più lento. **Un poco più vivo.** $\text{♩} = 100.$ **Viol. I.**

17 23 C 20 D 6 7 8

Un poco più animato. $\text{♩} = 116.$

9 10 11 **ff**

4 4 **E** 14

pp

F **Più mosso.** $\text{♩} = 132.$ 4

ff

8 **ff**

G **ff**

ff **ff**

Herold — Zampa Overture

Ophicleide.

ff *bo*

ff *bo* **E** 28 **F** Più mosso. $\text{♩} = 132$.

ff *bo*

ff **G**

ff *ff*