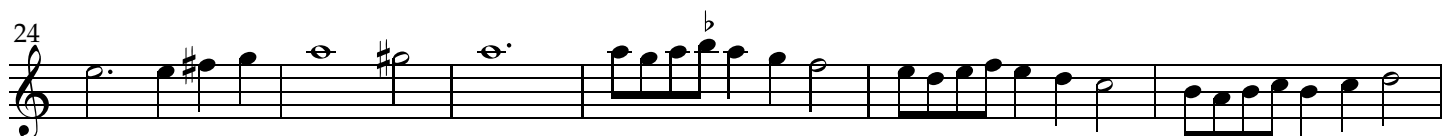


Saltarello detto Triuella

Per sonare con gli Stromenti da Corde A 5.

Orazio Vecchi (1550-1605)

Selva di Varia Ricreatione, Venezia 1590, no. 11



Saltarello detto Triuella

Per sonare con gli Stromenti da Corde A 5.

Orazio Vecchi (1550-1605)

Selva di Varia Ricreatione, Venezia 1590, no. 11

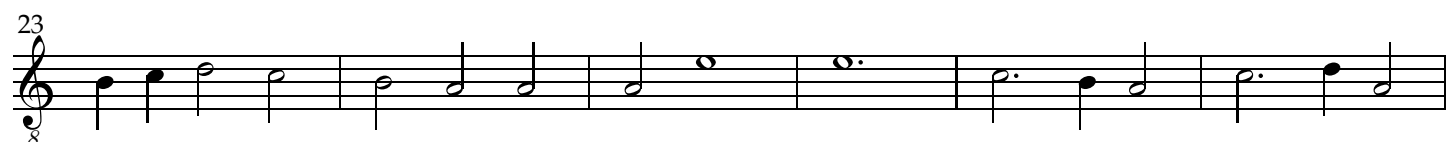
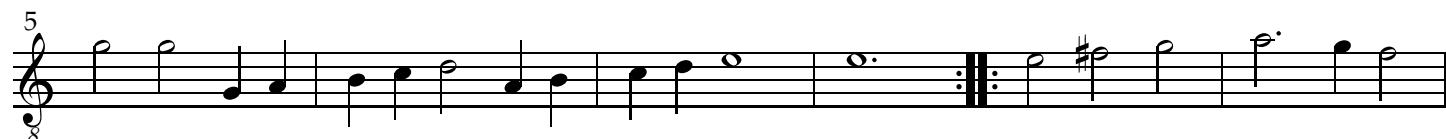


Saltarello detto Triuella

Per sonare con gli Stromenti da Corde A 5.

Orazio Vecchi (1550-1605)

Selva di Varia Ricreatione, Venezia 1590, no. 11

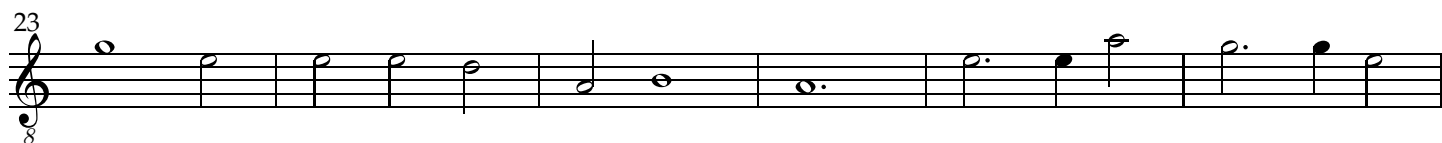
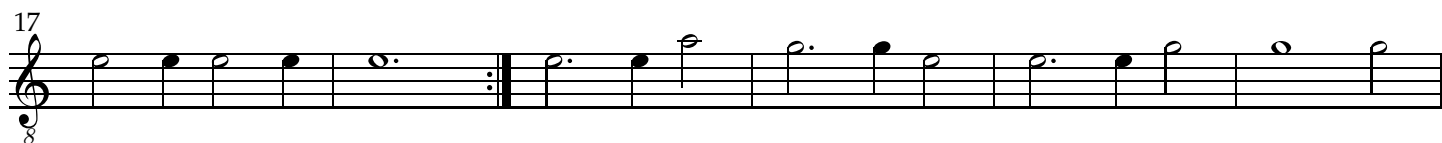
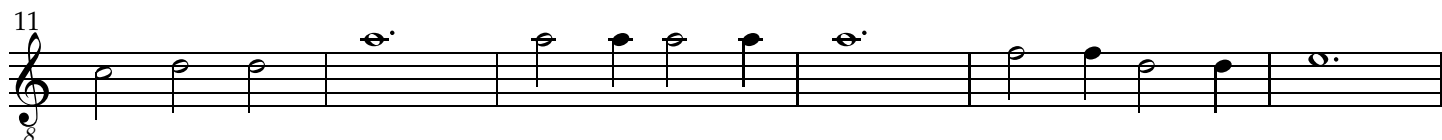
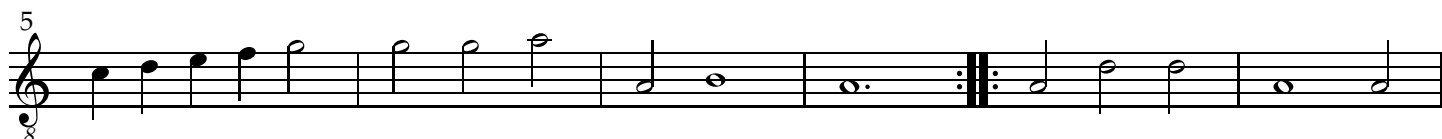


Saltarello detto Triuella

Per sonare con gli Stromenti da Corde A 5.

Orazio Vecchi (1550-1605)

Selva di Varia Ricreatione, Venezia 1590, no. 11

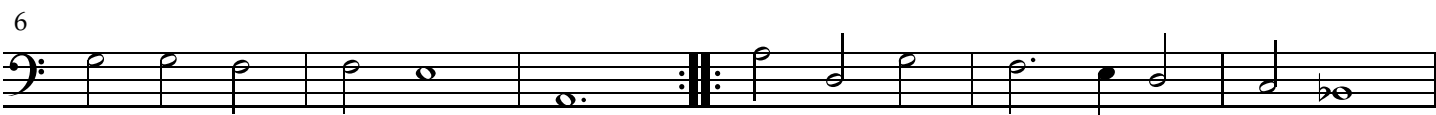


Saltarello detto Triuella

Per sonare con gli Stromenti da Corde A 5.

Orazio Vecchi (1550-1605)

Selva di Varia Ricreatione, Venezia 1590, no. 11



Saltarello detto Triuella

Per sonare con gli Stromenti da Corde A 5.

Orazio Vecchi (1550-1605)

Selva di Varia Ricreatione, Venezia 1590, no. 11

Lute

3

Transcr.

6

Transcr.

12

Transcr.

19

This system contains a lute tablature staff at the top and a piano accompaniment staff below. The tablature staff shows six lines with fret numbers (0-5) and rhythmic flags. The piano accompaniment is written in treble and bass clefs, featuring chords and melodic lines.

25

This system contains a lute tablature staff at the top and a piano accompaniment staff below. The tablature staff shows six lines with fret numbers and rhythmic flags. The piano accompaniment continues with chords and melodic lines.

30

This system contains a lute tablature staff at the top and a piano accompaniment staff below. The tablature staff shows six lines with fret numbers and rhythmic flags. The piano accompaniment continues with chords and melodic lines.

The lute tablature is for a lute in A.