

Corno II in F

Пляски

P. Леонкавалло

Пролог

Vivace

Handwritten musical score for Corno II in F, titled "Пляски" (Dances) by P. Leoncavallo. The score is in 3/8 time and includes dynamic markings like "f" and "STR." (string). The score is divided into sections marked with circled numbers 1, 2, and 3. The first section (1) starts with a treble clef and a 3/8 time signature. The second section (2) continues the melody. The third section (3) includes a double bar line and a "STR." marking. The score ends with a double bar line and a "2 4" marking.

V. S.

And. te sost.

10

11

And. no

poco meno

12

13

piu lento deciso Molto meno

rall.

14

And. te

15

Animando cor III.

16

animato

V. S.

Handwritten musical notation on two staves. The first staff contains a melodic line with slurs and accents. The second staff contains a bass line with slurs and accents. A circled 'P' is written above the second staff. A box containing the number '17' is followed by the text 'And. te cant. mezzo!'.

Handwritten musical notation on a single staff, continuing the bass line from the previous section.

Handwritten musical notation on a single staff, continuing the bass line with slurs and accents.

Handwritten musical notation on a single staff, continuing the bass line with slurs and accents.

Handwritten musical notation on a single staff, starting with a box containing the number '18' and the text 'Piu Lento'. The notation includes slurs, accents, and dynamic markings like 'f' and 'pp'.

Handwritten musical notation on a single staff, continuing the melodic line with slurs and accents.

Handwritten musical notation on a single staff, continuing the melodic line with slurs and accents.

Handwritten musical notation on a single staff, continuing the melodic line with slurs and accents.

Three empty musical staves at the bottom of the page.

Atto 1°

Coro d'introduzione

Handwritten musical score for a vocal introduction in 2/4 time. The score consists of ten staves of music. Above the first staff, the numbers 13, 19, and 4 are written, with boxes 1 and 2 above them. Above the second staff, box 3 is present. Above the eighth staff, boxes 4A and 4/B are circled. Above the ninth staff, box 5 is present. Above the tenth staff, box 6 is present. The music includes various dynamics such as *mf*, *sf*, *f*, and *sfz*, along with accents and slurs. The key signature has one sharp (F#).

Handwritten musical notation on four staves. The first two staves contain rhythmic patterns with accents and slurs. The third and fourth staves continue these patterns with some chordal accompaniment indicated by 'f' and 'b'.

6

Handwritten musical notation on three staves. The first staff has a treble clef and a key signature of one sharp. The second and third staves contain rhythmic patterns with accents and slurs. There is a large scribble on the second staff.

atempo

Handwritten musical notation on one staff. It starts with a treble clef and a key signature of one sharp. The notation includes rhythmic patterns with accents and slurs.

10 *And. no*

All.^o

Handwritten musical notation on three staves. The first staff has a treble clef and a key signature of one sharp. The second and third staves contain rhythmic patterns with accents and slurs. There are some handwritten notes like 'cort' and 'f'.

Handwritten musical notation on a single staff, starting with a treble clef and a 3/4 time signature. It contains several measures of music with notes and rests, including a measure with a fermata.

Musical notation for measures 17 and 18. Measure 17 is marked with a box containing the number 17 and includes the instruction *Cor I*. Measure 18 is marked with a box containing the number 18. The notation includes notes, rests, and dynamic markings like *f* and *p*.

Musical notation for measures 19 and 20. Measure 19 is marked with a box containing the number 19 and includes the instruction *Cor I*. Measure 20 is marked with a box containing the number 20. The notation includes notes, rests, and dynamic markings like *p*.

Musical notation for measures 21 and 22. Measure 21 is marked with a box containing the number 21 and includes the instruction *And.^{no}*. Measure 22 is marked with a box containing the number 22 and includes the instruction *piu mosso*. The notation includes notes, rests, and dynamic markings like *f*.

Musical notation for measures 23 and 24. Measure 23 is marked with a box containing the number 23 and includes the instruction *Adagio*. Measure 24 is marked with a box containing the number 24 and includes the instruction *molto meno*. The notation includes notes, rests, and dynamic markings like *f*. A 3/4 time signature is visible at the end of the staff.

Musical notation for measures 25 and 26. Measure 25 is marked with a box containing the number 25 and includes the instruction *Tempo I*. Measure 26 is marked with a box containing the number 26 and includes the instruction *mp*. The notation includes notes, rests, and dynamic markings like *f*.

Musical notation for measures 27 and 28. Measure 27 is marked with a box containing the number 27 and includes the instruction *All.^o vivace*. Measure 28 is marked with a box containing the number 28. The notation includes notes, rests, and dynamic markings like *f*.

59

60

mf *Poco meno*

61

And.^{no}

62

Mosso

63

mf

64

Adagio *And.^{te}* *f* *Anim.^{do}*

65

And.^{no}

66

a tempo

67

Piu mosso

68

And.^{no}

Un. Nap. And.^{no}

Coz I

Handwritten musical notation on a single staff. It begins with a treble clef and a key signature of one sharp (F#). The music consists of several measures with notes and rests. Above the staff, there are dynamic markings: *sfp* (sforzando piano) and *sfp*. There are also accents (^) and a fermata over a note. The measure numbers 9 and 8 are written at the end of the staff.

Handwritten musical notation on a single staff. It starts with a treble clef and a key signature of one sharp. The music features a sequence of notes with dynamic markings *poco rit* (poco ritardando) and *p* (piano), followed by *mp* (mezzo-piano). There are accents and a fermata over a note.

Handwritten musical notation on a single staff. It begins with a treble clef and a key signature of one sharp. The music includes notes with dynamic markings *mf* (mezzo-forte) and *f* (forte). The tempo marking *And.^{te}* (Andante) is present. A box containing the number 72 is placed above the staff.

Handwritten musical notation on a single staff. It starts with a treble clef and a key signature of one sharp. The music consists of notes with dynamic markings *f* (forte) and *f* (forte). A box containing the number 72 is placed above the staff.

Handwritten musical notation on a single staff. It begins with a treble clef and a key signature of one sharp. The music features notes with dynamic markings *p* (piano) and *p* (piano). There are accents and a fermata over a note. Measure numbers 3, 2, and 73 are visible.

Handwritten musical notation on a single staff. It starts with a treble clef and a key signature of one sharp. The music includes notes with dynamic markings *f* (forte) and *f* (forte). A box containing the number 73 is placed above the staff. The tempo marking *And.^{te}* is also present.

Handwritten musical notation on a single staff. It begins with a treble clef and a key signature of one sharp. The music consists of notes with dynamic markings *p* (piano) and *pp* (pianissimo). There are accents and a fermata over a note.

Handwritten musical notation on a single staff. It starts with a treble clef and a key signature of one sharp. The music includes notes with dynamic markings *pp* (pianissimo) and *pp* (pianissimo). A box containing the number 74 is placed above the staff.

Handwritten musical notation on a single staff. It begins with a treble clef and a key signature of one sharp. The music features notes with dynamic markings *f* (forte) and *p* (piano). There are accents and a fermata over a note. Measure numbers 12 and 8 are visible.

Handwritten musical notation on a single staff. It starts with a treble clef and a key signature of one sharp. The music consists of notes with dynamic markings *f* (forte) and *p* (piano). There are accents and a fermata over a note.

Handwritten musical notation on a single staff. It begins with a treble clef and a key signature of one sharp. The music includes notes with dynamic markings *mf* (mezzo-forte) and *mf* (mezzo-forte). There are accents and a fermata over a note.

Handwritten musical notation on a single staff. It starts with a treble clef and a key signature of one sharp. The music features notes with dynamic markings *mf* (mezzo-forte) and *p* (piano). There are accents and a fermata over a note. A box containing the number 75 is placed at the beginning of the staff. Measure numbers 6 and 4 are visible at the end.

Largo app.⁷⁰

76

6/4 *Cori* 1 2 1 *Cori* 4

77 *Lo stesso mov.⁷⁰ rall.*

3/4 5 1

Largo *ch. n.* **78** *pp* Sempre tranqu. *cello* Stesso tempo

2/4 4 17 1 3/4 7 3 3

80 *ff*

ff

81 *Un poco meno*

2 1 C 8

82 *mosso e concitato*

f 2 *f*

p 3 *f*

p 2 *mf*

83

3/4 1 3/4 1 C

Cori 1 3/4 1 C 3

92

Cori I

mf

mf

f

Tranquillo

93

Cori II

p

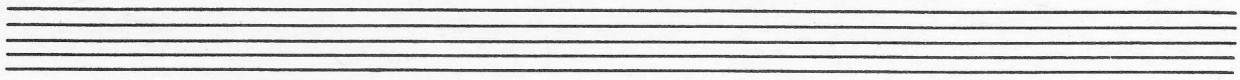
cresc

f

p

zit.

zit.



INTERMEZZO

Assai sost.

ff

ff

p

V.S.

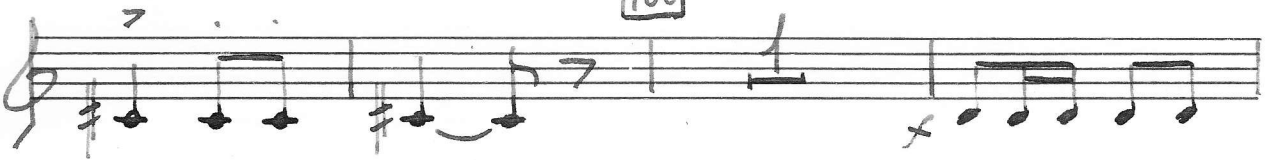
Cantabile

Atto 2°

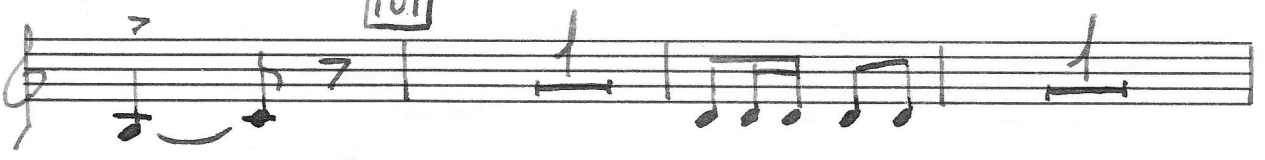
94 Marziale

95

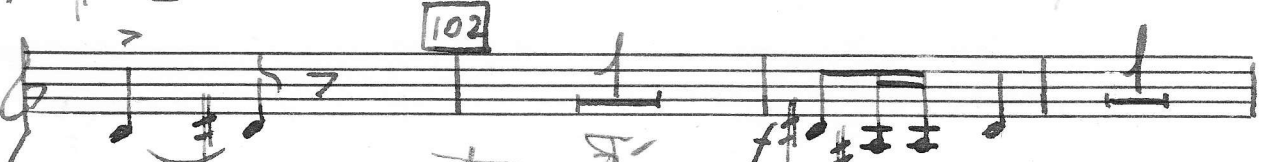
100



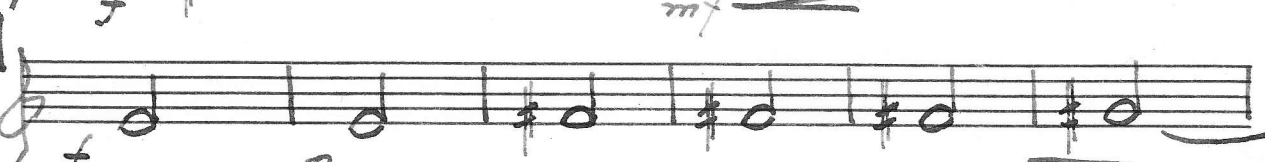
101



102



103



104



V.S.

9/4

1 2 3 4 5 6 7

6

123

124

p *mf sf*

124

And.^{no} sost. *p* *ff* Tempo gavotta

20

2

126

127

2

4

16

128

3

4

1

pp *crece*

129

Larg.^{to} *f* *And.^{te}* *f* *And.^{no}*

4

5

9

10

131

132

6

10

p *Coraggio*

133

5

Cl.

12

7

4

f

134

And.^{te} mosso *f* *3 Piu mosso*

C

4

5

C

135

2

3

5

f *p*

136

Musical staff 136, measures 1-4. Includes dynamic markings *p* and *mf*, and fingerings 1, 2, 3, 4.

Musical staff 136, measures 5-8. Includes dynamic marking *mf* and fingerings 1, 2, 3, 4.

137

Musical staff 137, measures 1-4. Includes dynamic markings *mf* and *f*, and fingerings 1, 2, 3, 4.

Musical staff 137, measures 5-8. Includes dynamic marking *sf* and fingerings 1, 2, 3, 4.

138

Musical staff 138, measures 1-4. Includes dynamic marking *sf* and fingerings 1, 2, 3, 4.

Musical staff 138, measures 5-8. Includes dynamic marking *p* and fingerings 1, 2, 3, 4.

139

Musical staff 139, measures 1-4. Includes dynamic marking *mp* and the instruction *zit*. Time signature 2/4.

Cant.

140

Musical staff 140, measures 1-4. Includes dynamic marking *mp* and the instruction *zit*. Time signature 2/4.

141

Musical staff 141, measures 1-4. Includes dynamic marking *mp* and the instruction *zit*. Time signature 2/4.

cresc

Musical staff 141, measures 5-8. Includes dynamic marking *mf* and the instruction *zit*. Time signature 2/4.

142

Lo stesso mov.to

Musical staff 142, measures 1-4. Includes dynamic marking *ff* and the instruction *Lo stesso mov.to*. Time signature 2/4.

ff

