

Viola

W. Jay Sydeman

Two Pieces
for Viola and Piano
(c. 1992, revised)

Two Pieces

for Viola and Piano

W. Jay Sydeman
(c. 1992, revised)

I.

Andante espressivo ♩ = c. 48

Musical score for Viola, Part I, measures 1-7. The score is in 5/4 time with a key signature of two flats. It begins with a *mp espr.* dynamic and a *cresc.* hairpin. A box labeled 'A' is placed above measure 4. The score includes a *p sub.* dynamic and an *allarg. - - - - - a tempo* marking. The piece concludes with a repeat sign and a fermata over a whole note.

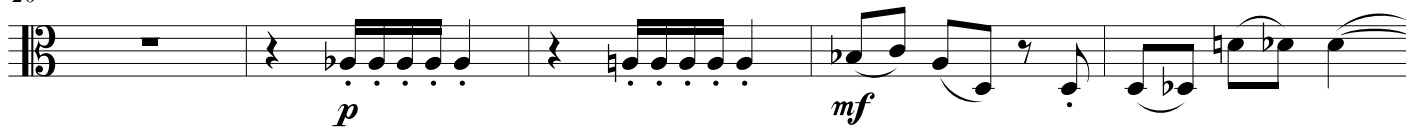
II.

Allegro ♩ = c. 200

Musical score for Viola, Part II, measures 1-14. The score is in 5/4 time with a key signature of two flats. It begins with a *mf* dynamic. The piece features a variety of time signatures: 2/4, 3/4, and 4/4. A box labeled 'A' is placed above measure 14. The score concludes with a *Fine* marking.

B

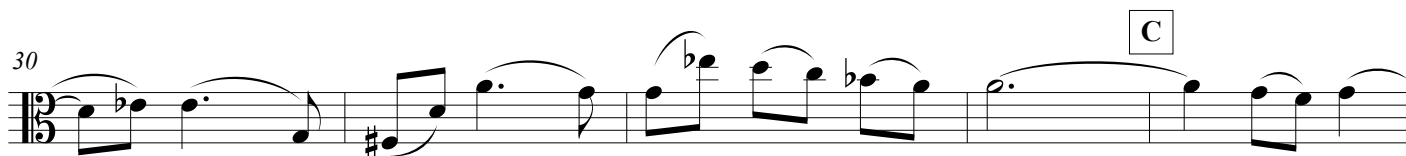
20



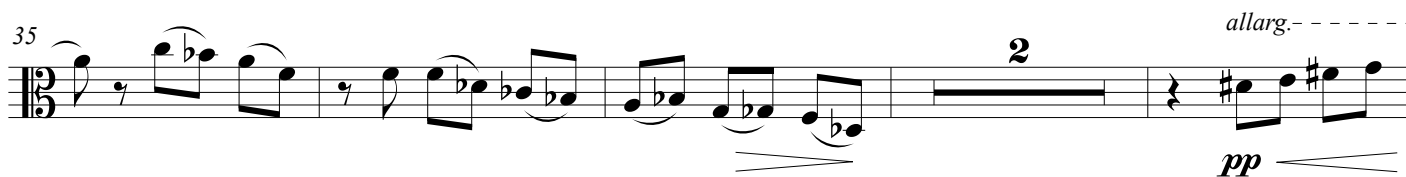
25



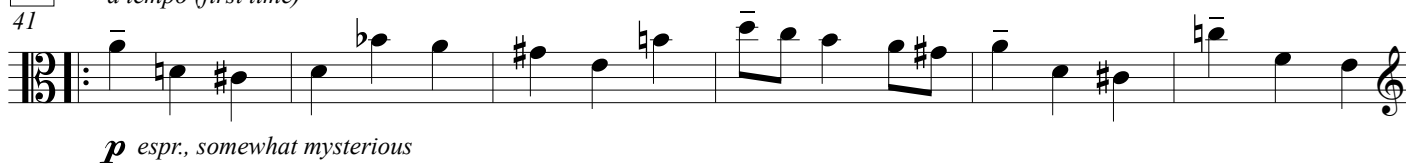
30



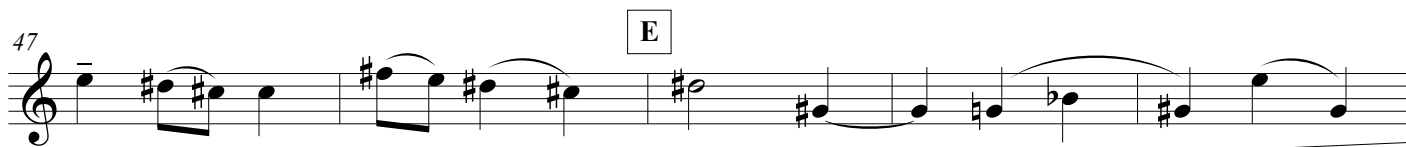
35

**D***a tempo (first time)*

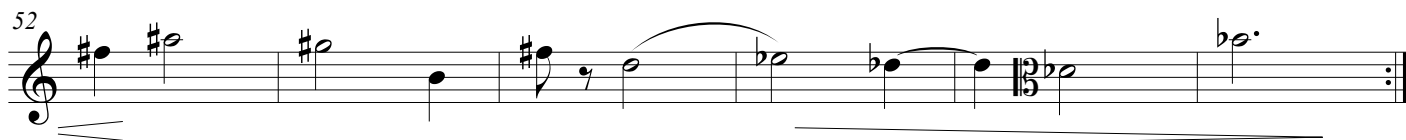
41



47



52



Three times,
each time faster, then
D.C. al Fine