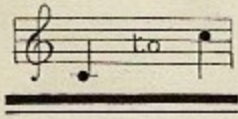
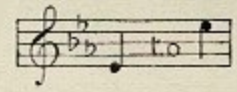


N<sup>o</sup>. 1 IN C



N<sup>o</sup>. 2 IN E<sup>b</sup>



SUNG BY  
MISS CLARA BUTT.

# IN HAVEN

(CAPRI)

FROM

## “SEA-PICTURES”

A Cycle of Five Songs for Contralto  
(OP. 37.)

THE WORDS BY

C. A. ELGAR

The Music by

# EDWARD ELGAR.

---

PRICE 2/- NET

---

BOOSEY & ©  
295. REGENT STREET, LONDON, W.  
AND  
9. EAST SEVENTEENTH STREET, NEW YORK.

THIS SONG MAY BE SUNG IN PUBLIC WITHOUT FEE OR LICENSE.  
THE PUBLIC PERFORMANCE OF ANY PARODIED VERSION, HOWEVER, IS STRICTLY PROHIBITED.

COPYRIGHT 1899 BY BOOSEY & C<sup>o</sup>



## IN HAVEN.

(CAPRI.)

---

CLOSELY let me hold thy hand,  
Storms are sweeping sea and land ;  
Love alone will stand.

Closely cling, for waves beat fast,  
Foam-flakes cloud the hurrying blast ;  
Love alone will last.

Kiss my lips, and softly say :  
"Joy, sea-swept, may fade to-day ;  
Love alone will stay."

C. A. ELGAR.



# IN HAVEN.

1

Words by  
C. A. ELGAR.

(Capri.)

Music by  
EDWARD ELGAR. Op. 37. No 2.

Allegretto. (♩ = 72)

PIANO. *p*

Close - ly let me hold thy hand . . . .

*pp*

*cresc.*

Storms are sweep - ing sea and land; . . . .

Love a - lone will

*cresc.* *p*



stand. . . . .

*fp* *dim.*

*pp*

Close - ly cling, for waves beat fast, . . . . .

*pp*

*cresc.*  
Foam flakes cloud the hur - - rying blast. . . . .

*cresc.*



... Love a - lone will

*cresc.* *p*

Red. \*

Detailed description: This system contains the first two measures of the piece. The vocal line begins with a rest followed by the lyrics 'Love a - lone will'. The piano accompaniment features a flowing sixteenth-note pattern in the right hand and a similar pattern in the left hand. Dynamics include a crescendo and a piano marking.

last. . . . .

*fp* *dim.*

Red. \*

Detailed description: This system contains the next two measures. The vocal line has a long note followed by a dotted line indicating the end of the phrase. The piano accompaniment continues with the sixteenth-note pattern. Dynamics include fortissimo piano and a decrescendo.

...

Red. \*

Detailed description: This system contains the next two measures. The vocal line has a rest followed by a note. The piano accompaniment continues with the sixteenth-note pattern. A decrescendo marking is present.

Kiss my lips and soft - - ly say. . . . .

*p* *pp*

Red. \*

Detailed description: This system contains the final two measures. The vocal line has the lyrics 'Kiss my lips and soft - - ly say. . . . .'. The piano accompaniment continues with the sixteenth-note pattern. Dynamics include piano and pianissimo.



