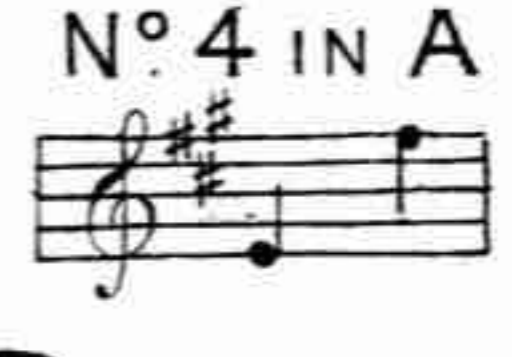
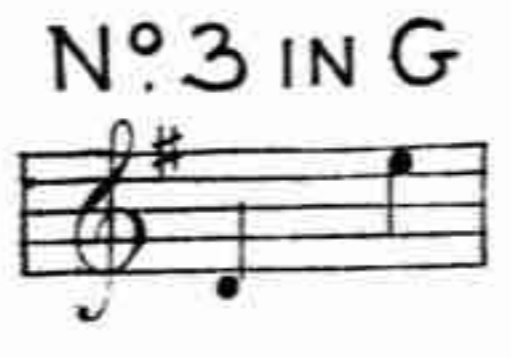


*Mrs Cecil Peckham
from Maurice Davies
10/12/25*

SUNG BY
MISS ESTHER PALLISER & MISS MAGGIE DAVIES
ALSO BY M^{ME} CLARA SAMUELL, M^{RS} HENSCHEL
M^{ME} OSBORNE-WILLIAMS, M^{ME} BERTHA MOORE
MISS CLARA BUTT & MISS SARAH BERRY.



SHEPHERD'S CRADLE SONG

(SLEEP BABY SLEEP)

WORDS TRANSLATED FROM



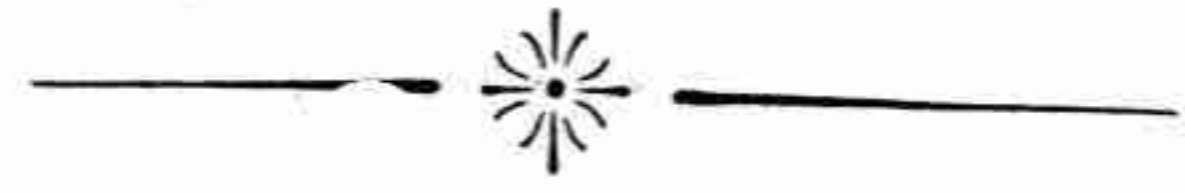
THE GERMAN



Music by

ARTHUR SOMERVELL.

All rights reserved.



PRICE 4/-

LONDON
EDWIN ASHDOWN
(Limited)
19, HANOVER SQUARE.

BOSTON, MASS.
218, TREMONT STREET.

TORONTO
144, VICTORIA STREET.

PERMISSION FOR PUBLIC PERFORMANCE WITH THESE WORDS ONLY IS GRANTED.

TO
Mrs Henschel.

SHEPHERD'S CRADLE SONG.

Words translated from the German.

Set to Music by
ARTHUR SOMERVELL

Andante.

VOICE.

Musical notation for the first system. The voice part is on a single staff with a treble clef, and the piano part is on a grand staff with treble and bass clefs. The key signature is one flat (B-flat) and the time signature is 2/4. The tempo is marked 'Andante.' and the dynamics are marked 'p' (piano). The lyrics are: Sleep,..... ba - by sleep, Thy

Sleep,..... ba - by sleep, Thy

PIANO.

Musical notation for the second system. The voice part continues on a single staff with a treble clef, and the piano part continues on a grand staff with treble and bass clefs. The lyrics are: fa - ther guards his sheep, Thy mo - ther. shakes the

fa - ther guards his sheep, Thy mo - ther. shakes the

Musical notation for the third system. The voice part continues on a single staff with a treble clef, and the piano part continues on a grand staff with treble and bass clefs. The lyrics are: dream - land tree, Down falls a lit - tle dream for thee

dream - land tree, Down falls a lit - tle dream for thee

p
 Sleep..... ba - by sleep. Sleep..... ba - by

sleep, The large stars are the sheep The

lit - tle stars are lambs I guess, The gen - tle moon the

shep - herd - ess, Sleep..... ba - by sleep.

Sleep, ba - by sleep A - way, to tend thy

sheep A - way, thou sheep - dog,

fierce and wild, And do not harm my

p rall. sleep - ing child, *a tempo.* Sleep, ba - by sleep.

pp

Sleep,..... ba - by sleep, Our Sa - viour loves His

pp

mf

sheep, He is the Lamb of God on - high,

Who for our sakes came down to die Sleep,..... ba - by

Sleep.....

pp

POPULAR SONGS.

Price 2/- net each.

I know of two bright eyes.

G. H. Clutsam.

Andante con moto.

I know of two bright eyes watching for me,
I know of two white arms wait-ing for me,
I know of cheeks that burn To greet me when I re-turn, O

sempre pp
sempre arpeggiando

Published in Eb, F, Gb, G, Ab & A.

If my songs were only winged.

Reynaldo Hahn.

Andante moderato.

My songs should fly sweet and
ten-der T'wards your garden blooming
fair, If my songs were

p
con Pedale
mf
pp

Published in C, D & E.

Ma Curly Headed Babby.

G. H. Clutsam.

Andantino.

Oh, ma bab-by, ma cur-ly head ed bab-by, W'll
sit be-low de sky, an' sing a song to de moon.
Oh, ma

pp

Published in C, D, E & F.

Open thy blue eyes.

J. Massenet.

Allegro.

Open thy blue eyes, my be-
-lov-ed, Day-break is
here. High o'er earth a gay bird is

mf

Published in D, Eb, E, F & G.