

2nd Trumpet in F/D/B♭

Louis Spohr  
(1784-1859)

Symphony No.4  
Op.86

# Symphony No.4

## I.

Louis Spohr  
(1784-1859)

**Largo**  $\text{♩} = 63$

**Allegro**  $\text{♩} = 100$

**A** 7 10

**B** 14 **C**

**D** 22 **E** 26 29

**F** 30 33 **G** 34 37

**H** 38 41

*ff* *dim.* *f* *p* *ff*

Fl. 2 Vln. 1 Tbn. 1 Cl. 1/Vln. 1 Hn. 3+4 Hn. 1 Tbns. Fls./Cls.

2nd Trumpet in F/D/Bb

166 **9**  
*ff*

180 **I** *Tbns*  
*ff*

185 **6** **5**  
*dim.* *ff*

200 **J** **2**  
*Tbns* *fff*

207 **14** **K** **13**  
*Vln. 1*

237 **L** **14**  
*Cls/Bsns/Hns*

253 **M** **8**  
*Fl./Cl.*

263 **N** **13**  
*Hn.4* *Ob.1*

281 **O** **4**  
*p* *cresc.* *f*

290 **5**  
*Tbns* *f* *p* *Tbns* *ff*

300 **P** **20** **4** **Morendo**  
*dim.* *p* *muta in D*

## II.

1 *Andantino* ♩=152

TACET

## III.

1 *Tempo di Marcia*

*Solo* *f* *cresc.*

5 *ff* *4* Picc./Fl/Cls

16 *f* *f* *f* *f* *f*

23 1. *f* *cresc.*

27 2. *f* *5* *A* *Tbns*

38 *f* *cresc.*

45 *ff* *4* Picc./Fl/Cls

55 *poco a poco diminuendo* *f*

62 *p* *8* Fl./Cl./Vln. *b*

75 *Morendo* *pp* *3* *2* *E* *16*

97 **F** Picc./Fl/Cls

5

Vc.

Detailed description: This staff shows measures 97-101. Measure 97 is marked with a boxed 'F'. The staff contains a melodic line with slurs and ties. A measure rest for 5 measures is shown in the final measure of the staff. The instrument is Picc./Fl/Cls.

107 **G** **H** **7**

13

Vln. 1

Detailed description: This staff shows measures 107-111. Measure 107 is marked with a boxed 'G'. Measure 108 is a full-measure rest for 13 measures. Measure 109 is marked with a boxed 'H'. The staff contains a melodic line with triplets and slurs. A measure rest for 7 measures is shown in the final measure of the staff. The instrument is Vln. 1.

131 **I** **9**

Vln. 1

Detailed description: This staff shows measures 131-139. Measure 131 is marked with a boxed 'I'. The staff contains a melodic line with triplets and slurs. A measure rest for 9 measures is shown in the final measure of the staff. The instrument is Vln. 1.

144 **J** **6**

Vln. 1

Detailed description: This staff shows measures 144-149. Measure 144 is marked with a boxed 'J'. The staff contains a melodic line with triplets and slurs. A measure rest for 6 measures is shown in the final measure of the staff. The instrument is Vln. 1.

152 **K** **6**

Vc.

Detailed description: This staff shows measures 152-157. Measure 152 is marked with a boxed 'K'. The staff contains a melodic line with slurs and ties. A measure rest for 6 measures is shown in the final measure of the staff. The instrument is Vc.

162 **L** **M** **10**

Vc.

Detailed description: This staff shows measures 162-171. Measure 162 is marked with a boxed 'L'. Measure 163 is a full-measure rest for 16 measures. Measure 164 is marked with a boxed 'M'. The staff contains a melodic line with slurs and ties. A measure rest for 10 measures is shown in the final measure of the staff. The instrument is Vc.

192 Fl./Cl. **5**

Detailed description: This staff shows measures 192-196. Measure 192 is marked with a boxed 'N'. The staff contains a melodic line with slurs and ties. A measure rest for 5 measures is shown in the final measure of the staff. The instrument is Fl./Cl.

200 **N** **9**

Vc.

Detailed description: This staff shows measures 200-208. Measure 200 is marked with a boxed 'N'. The staff contains a melodic line with slurs and ties. A measure rest for 9 measures is shown in the final measure of the staff. The instrument is Vc.

213 **O** **P** **8**

Vln. 1

Detailed description: This staff shows measures 213-221. Measure 213 is marked with a boxed 'O'. Measure 214 is a full-measure rest for 13 measures. Measure 215 is marked with a boxed 'P'. The staff contains a melodic line with triplets and slurs. A measure rest for 8 measures is shown in the final measure of the staff. The instrument is Vln. 1.

237 **Q** **5**


Vln. 1

Detailed description: This staff shows measures 237-241. Measure 237 is marked with a boxed 'Q'. The staff contains a melodic line with triplets and slurs. A measure rest for 5 measures is shown in the final measure of the staff. The instrument is Vln. 1.

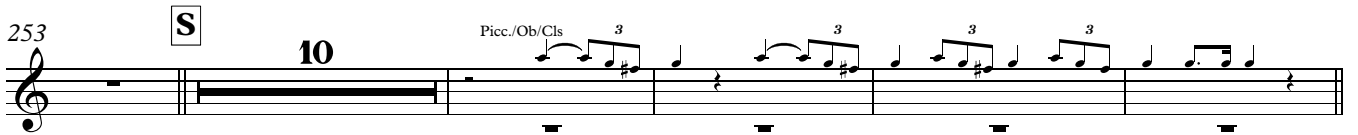
2nd Trumpet in F/D/B $\flat$

6

246 **R** <sub>Tbns</sub>



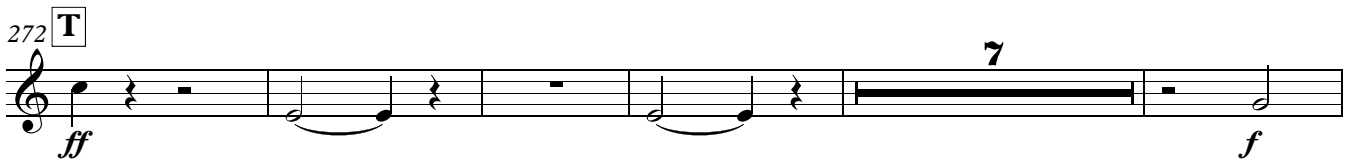
253 **S** **10** Picc./Ob./Cls **3**



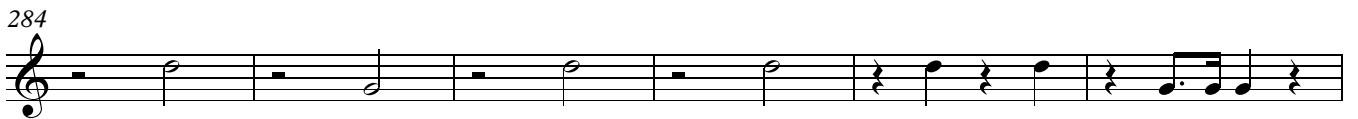
268 (in D) **3** **3** **3** **3** *f* *cresc.*



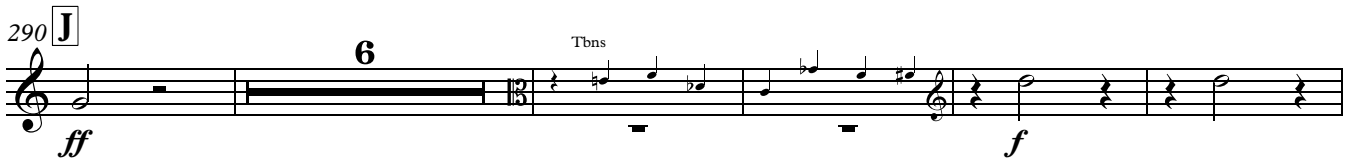
272 **T** **7** *ff* *f*




284



290 **J** **6** <sub>Tbns</sub> *ff* *f*



301 **3** **3** **3** **3** *f* *cresc.*



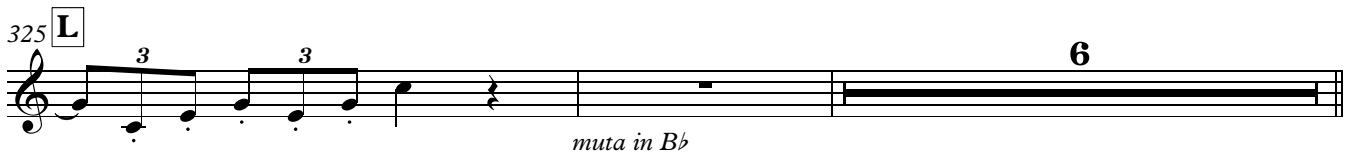
308 **K** **4** Picc./Fl./Cls *ff*

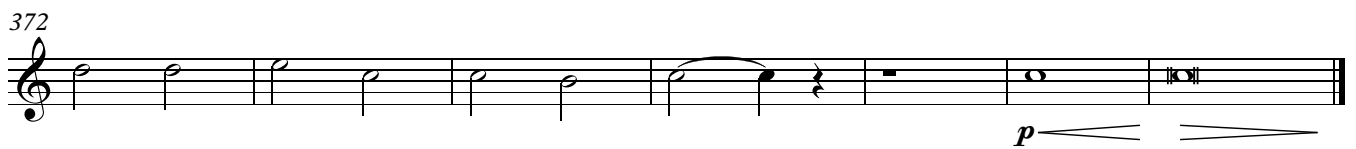


319 **3** **3** **3** **3** *f*



325 **L** **3** **3** **6** *muta in B $\flat$*



333 **M** Andante maestoso (♩=60)338 **Ambrosianischer Lobgesang**

## IV.

1 **Larghetto** (♩=50)