

Miscellanees

de

Musique

Corne I<sup>mo</sup>

Genre II

G<sup>lra</sup> Fugue



SUPPL. MUS.  
N<sup>o</sup> 3739

Ouverture Corno 1<sup>mo</sup> in Eb.

1. *Allegro*

*p.* *morendo.* *pp.*

in C. Basso.

2. *Andantino*

*p.* *f.* 14

Handwritten musical notation on a single staff, featuring a treble clef and a key signature of one flat. The notation includes various note values and rests, with dynamic markings *f.*, *ff.*, *ff.*, and *f.* written below the staff.

Handwritten musical notation on a single staff, featuring a treble clef and a key signature of one flat. The notation includes various note values and rests.

Handwritten musical notation on a single staff, featuring a treble clef and a key signature of one flat. The notation includes various note values and rests, with dynamic markings *f.*, *ff.*, *f.*, and *ff.* written below the staff.

Handwritten musical notation on a single staff, featuring a treble clef and a key signature of one flat. The notation includes various note values and rests, with dynamic markings *f.* and *ff.* written below the staff.

Handwritten musical notation on a single staff, featuring a treble clef and a key signature of one flat. The notation includes various note values and rests, with dynamic markings *f.* and *ff.* written below the staff.

Handwritten musical notation on a single staff, featuring a treble clef and a key signature of one flat. The notation includes various note values and rests.

Handwritten musical notation on a single staff, featuring a treble clef and a key signature of one flat. The notation includes various note values and rests, with dynamic markings *ff.*, *ff.*, and *ff.* written below the staff.

Handwritten musical notation on a single staff, featuring a treble clef and a key signature of one flat. The notation includes various note values and rests, with dynamic markings *ff.* and *ff.* written below the staff.

Handwritten musical notation on a single staff, featuring a treble clef and a key signature of one flat. The notation includes various note values and rests, with dynamic markings *ff.* and *ff.* written below the staff.

Handwritten musical notation on a single staff, featuring a treble clef and a key signature of one flat. The notation includes various note values and rests.

*G. All<sup>o</sup>. in C<sup>♭</sup>. maestoso.*  
Handwritten musical notation on a single staff, featuring a treble clef and a key signature of one flat. The notation includes various note values and rests.

Handwritten musical notation on a single staff, featuring a treble clef and a key signature of one flat. The notation includes various note values and rests.

A page of handwritten musical notation on aged, yellowed paper. The score consists of 12 staves, arranged in six pairs. Each staff contains musical notation, including notes, rests, and dynamic markings such as *fp.* (fortissimo) and *f.* (forte). The notation is written in a cursive, historical style. The paper shows signs of age, including foxing and some staining. The music appears to be a single melodic line, possibly for a violin or flute, given the range and articulation. The staves are numbered 1 through 12 from top to bottom.

Chor in F.

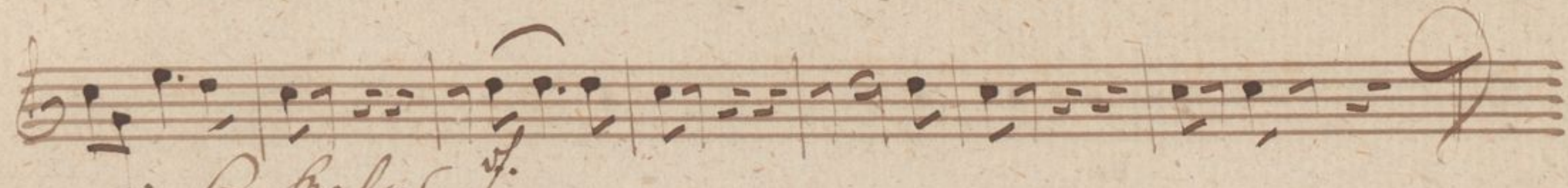
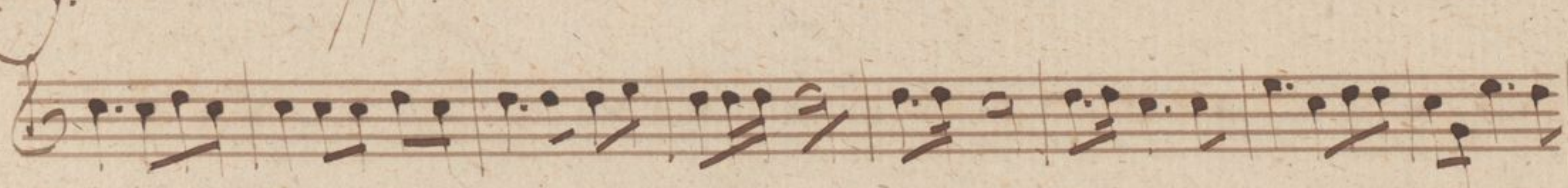
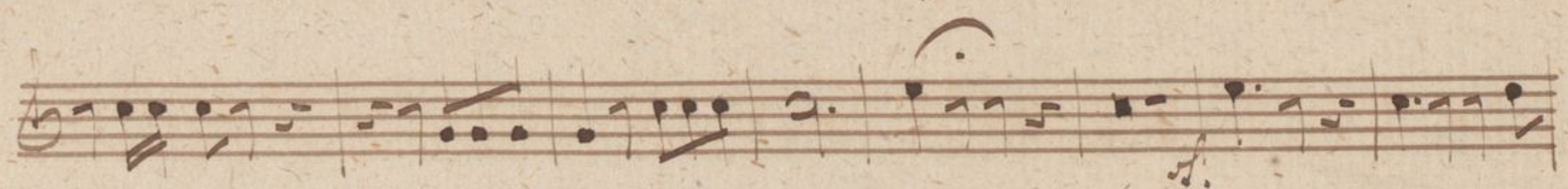
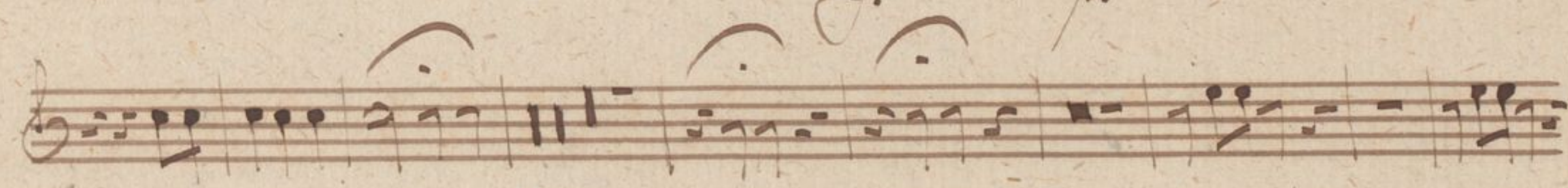
4. *And<sup>te</sup>mo*

5. *Allegretto*

*ritardando.*

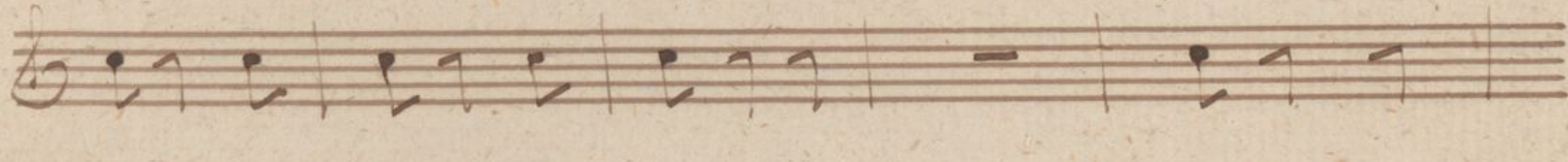
*a tempo*

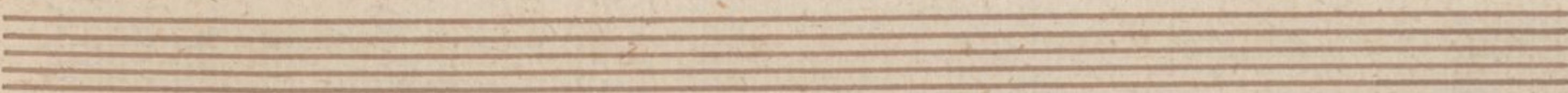
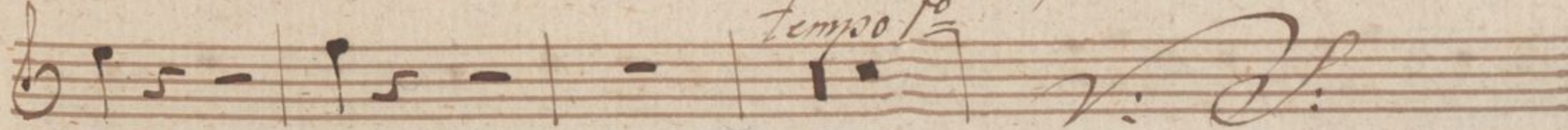
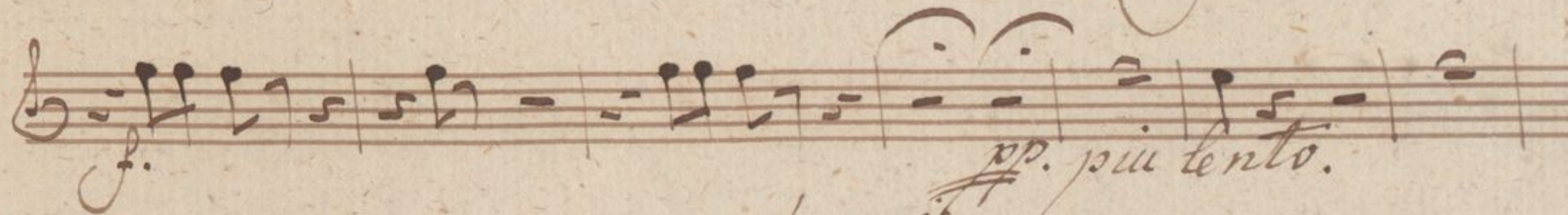
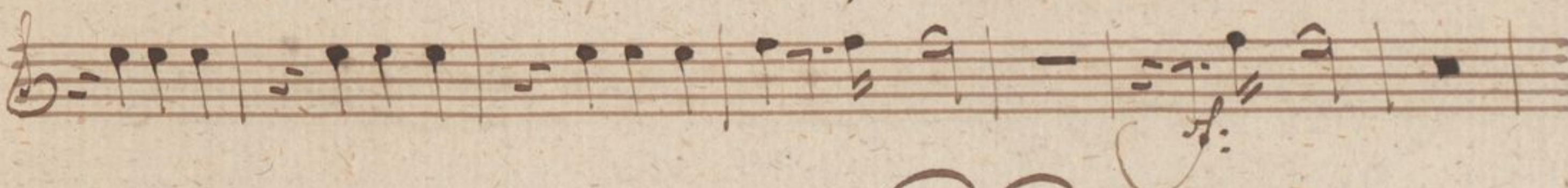
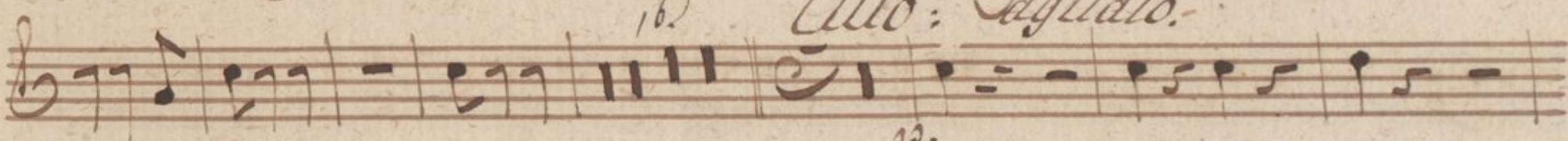
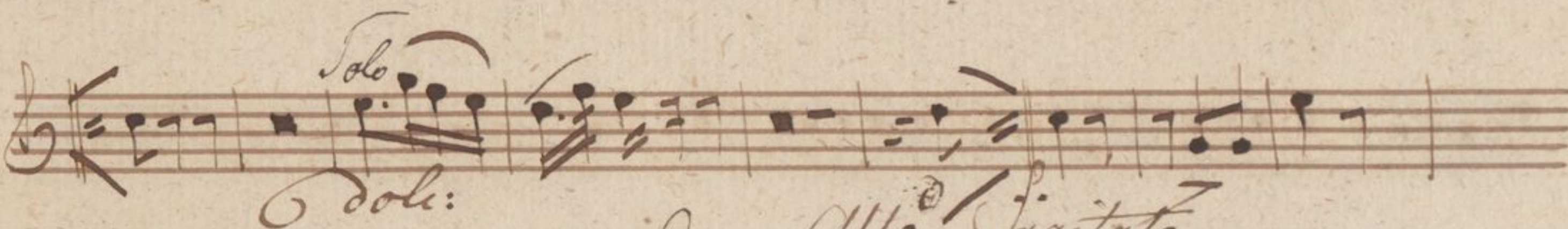
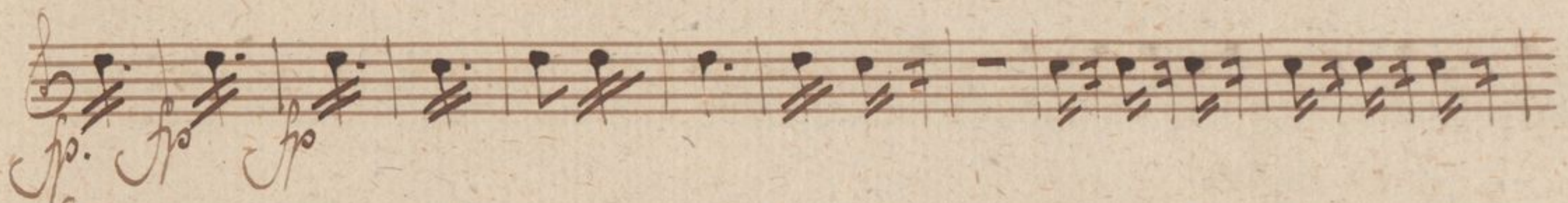
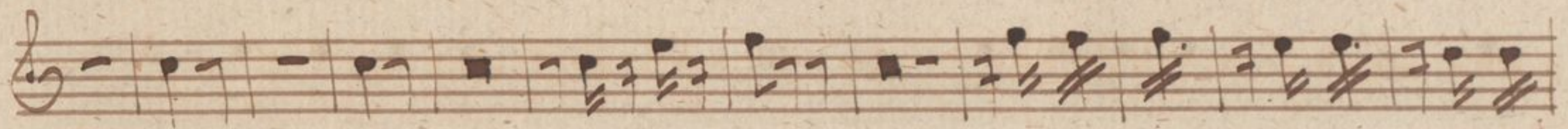
*for.*



*in C. basso.*

*G. Griego*



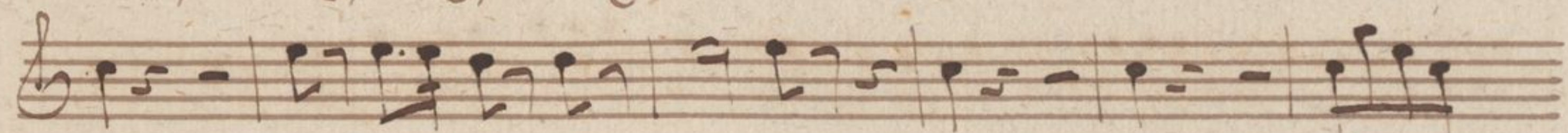
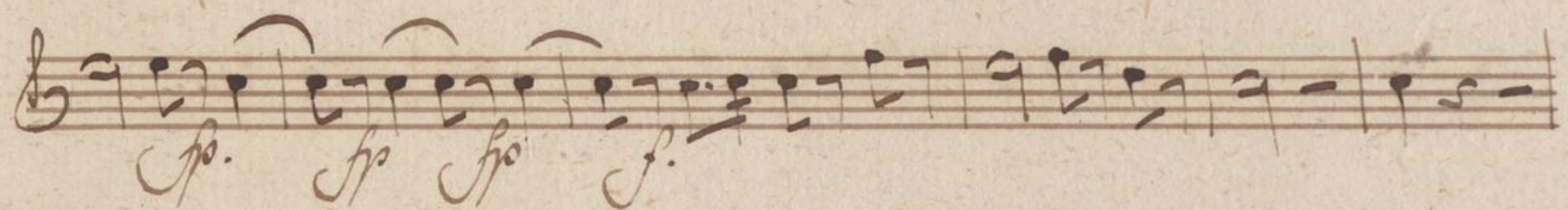
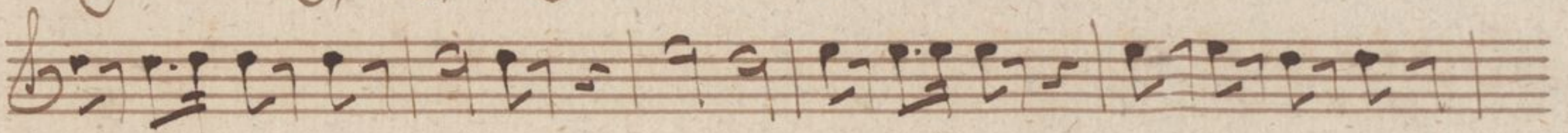
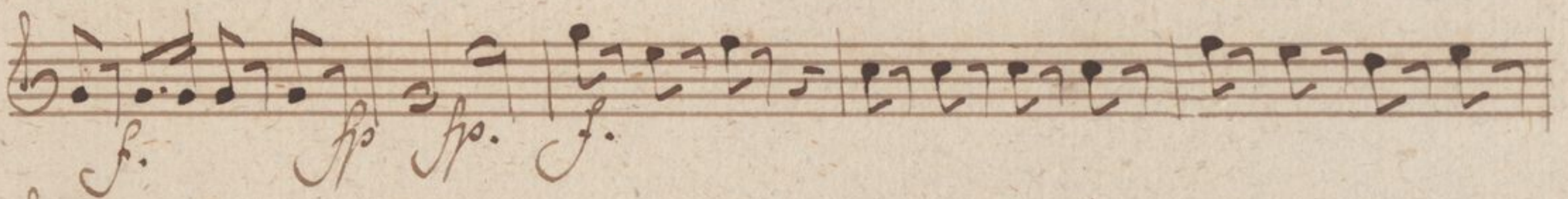
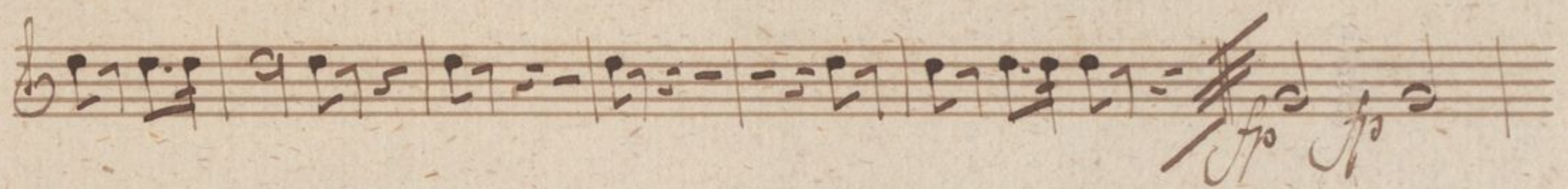


Handwritten musical notation on three staves. The first staff begins with a treble clef, a common time signature, and a dynamic marking of *mf.* followed by *f.* The notation consists of eighth and sixteenth notes.

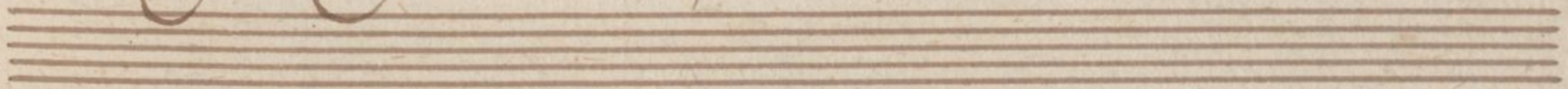
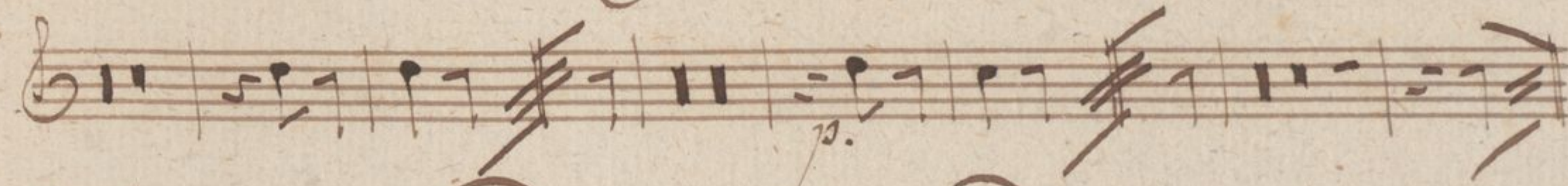
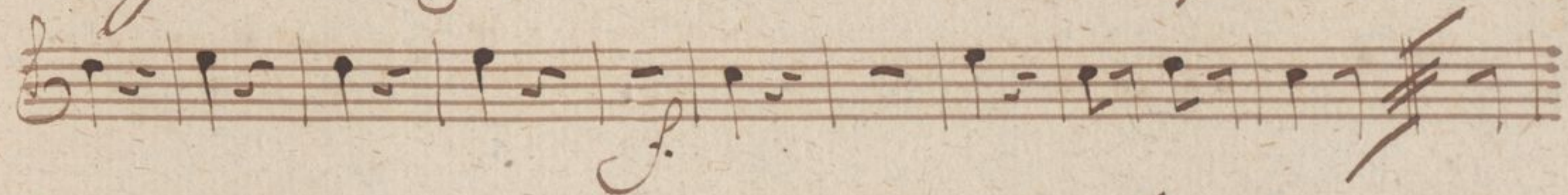
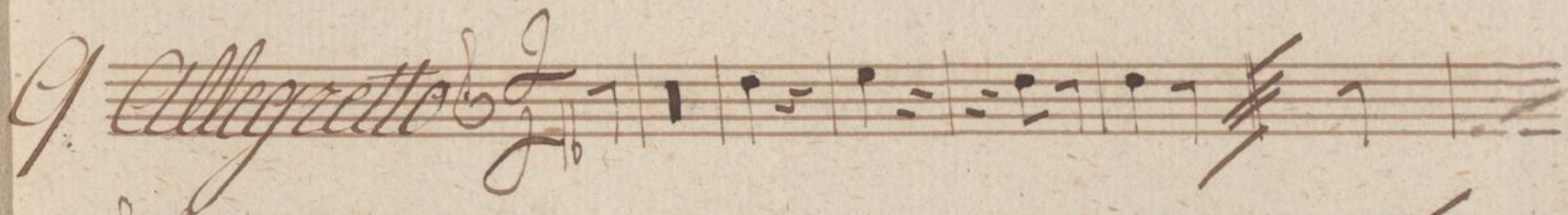
7. *Allegro* *in C. basso.*  
Handwritten musical notation on four staves. The first staff features a treble clef, a common time signature, and the tempo marking *Allegro*. The music is written in bass clef with a key signature of one flat. The notation includes eighth and sixteenth notes.

8. *Allo? in C. basso.* *Marcia*  
Handwritten musical notation on four staves. The first staff features a treble clef, a common time signature, and the tempo marking *Allo?*. The music is written in bass clef with a key signature of one flat. The notation includes eighth and sixteenth notes, with some measures containing beamed eighth notes.



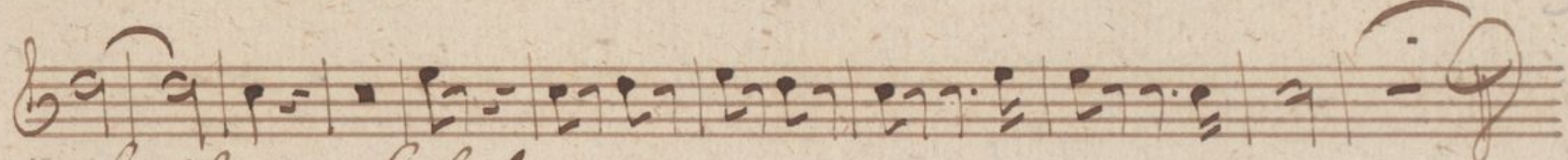


*Variation* *and* *in* *C*

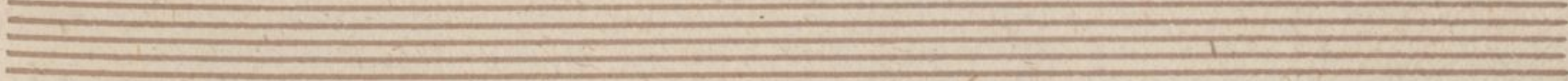
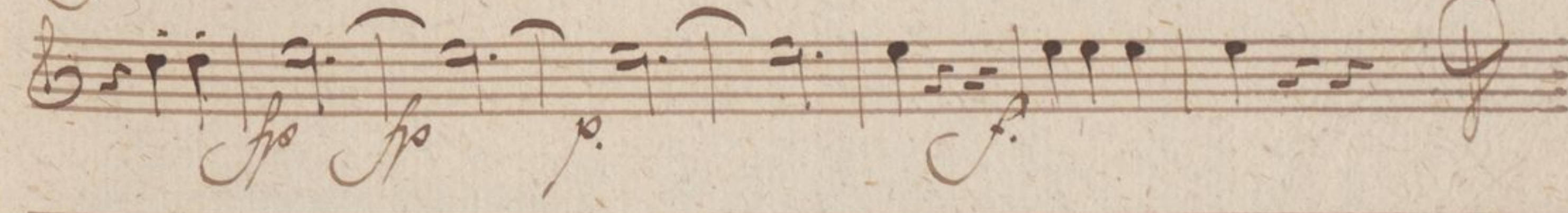
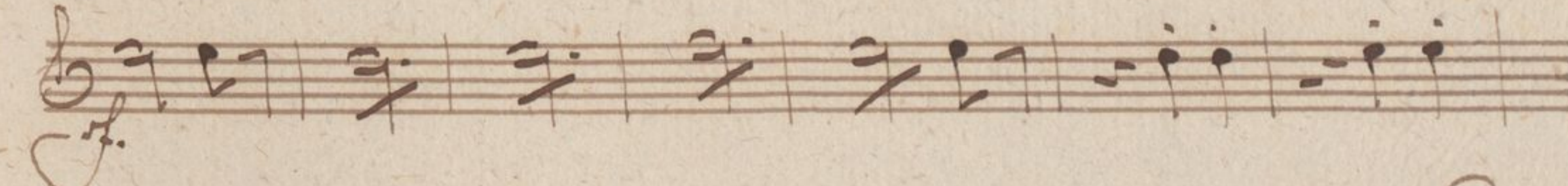
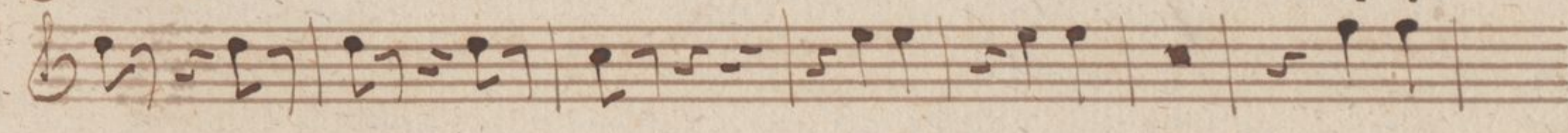
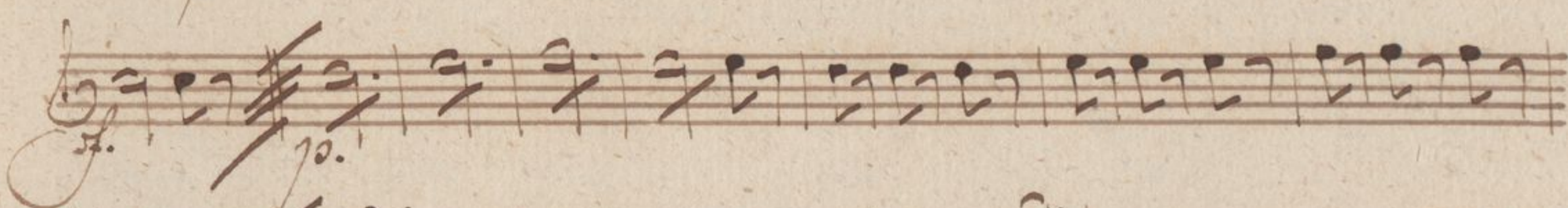
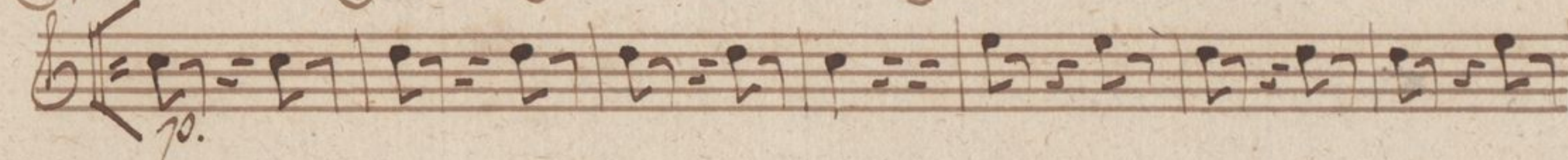
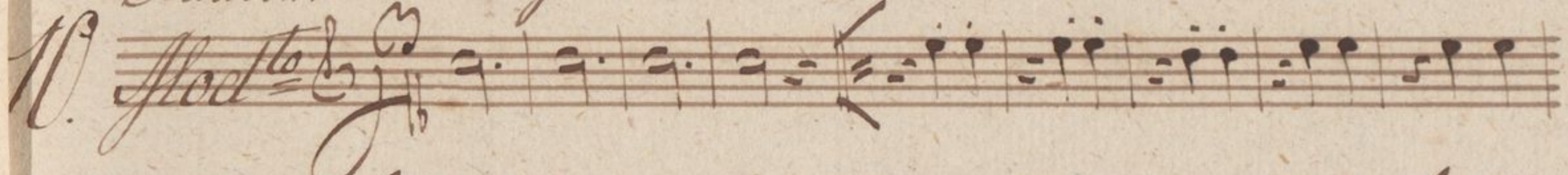


A handwritten musical score consisting of 12 staves. The notation includes various rhythmic values, accidentals, and dynamic markings. Key annotations include:

- Staff 1: *p*
- Staff 2: *Solo*
- Staff 3: *f*
- Staff 4: *for*, *p*
- Staff 5: *p*
- Staff 6: *p*
- Staff 7: *p*, *cref.*, *f*
- Staff 8: *f*
- Staff 9: *p*
- Staff 10: *f*
- Staff 11: *Dim:*
- Staff 12: *pp*



Lütkem in B. basso.



*in Eb. Allo:*

*II*

*Marcia*

*fine*

*Carl Schwaning*