

*Marc-Antoine Charpentier*

# Te Deum

Orgue, Basses de Violons et Bassons



# *Te Deum*

[H. 146]

Marc-Antoine Charpentier  
B.N. France - Mélanges Autographes Vol. X

[1] **♩ Rondeau bis au commencement et a la fin**



2. **Premier couplet**  
9



**Rondeau une fois comme  
au commencement ♩**

3. **Second couplet**  
17



**Rondeau bis comme  
au commencement ♩**

[2] 25

*acc. seul*

5 6 5 6 6  $\natural$ 5

33

6

39

7 6 7 6 7 4 3

45

5 6 5 6 5 6 7 6

53

6  $b$ 5 6 #3

60

#3 5 6 5 3  $b$ 6 6 9 8 6 7 6 5 3 4 4 3

[3]

*tous*

6 7 6 # #4 6 7 #6 #

77

*acc. seul*

5 8 7 6 7 5 6 7 6 # # # #  
6 5 4  $b$ 5 3  
 $b$ 3 2

85

Musical notation for measure 85, featuring a treble clef, a key signature of one sharp (F#), and a 3/4 time signature. The melody consists of quarter notes and half notes. Fingering numbers are placed below the notes: #, #, 9, #6, 4, 3, #, #.

93

Musical notation for measure 93, featuring a treble clef, a key signature of one sharp (F#), and a 3/4 time signature. The melody consists of quarter notes and half notes. Fingering numbers are placed below the notes: #, #, #, #, #, #, 4, 2, 6, #6, 4.

101

Musical notation for measure 101, featuring a treble clef, a key signature of one sharp (F#), and a 3/4 time signature. The melody consists of quarter notes and half notes. Fingering numbers are placed below the notes: 5, 4, 3, 6, #6, 4, 5, 4, 3.

109

Musical notation for measure 109, featuring a treble clef, a key signature of one sharp (F#), and a 3/4 time signature. The melody consists of quarter notes and eighth notes.

116

Musical notation for measure 116, featuring a treble clef, a key signature of one sharp (F#), and a 3/4 time signature. The melody consists of quarter notes and half notes.

123

Musical notation for measure 123, featuring a treble clef, a key signature of one sharp (F#), and a 3/4 time signature. The melody consists of quarter notes and eighth notes.

129

Musical notation for measure 129, featuring a treble clef, a key signature of one sharp (F#), and a 3/4 time signature. The melody consists of quarter notes and eighth notes.

134

Musical notation for measure 134, featuring a treble clef, a key signature of one sharp (F#), and a 3/4 time signature. The melody consists of quarter notes and eighth notes. Fingering numbers are placed below the notes: 7, 5, 5, 4, 3.

4  
[4]

*tous*



145



151



9 6 6  
4

160



168



9 5 6 # # #  
b

177



b b  
6

184

[Bvn, bn]

*tous*



*acc. seul*

5 7

191

*acc. seul*

*tous*

*acc. seul*

*tous*



5 6 6 7 6

[Bvn, bn]

[Bvn, bn]

198



204 *acc. seul*

[Bvn, bn]

211 *tous* *acc. seul* *tous*

[Bvn, bn]

218

222

[5] Te per orbem

232

237

242

248

Musical staff for measure 248 in bass clef with a key signature of two sharps (F# and C#). The staff contains a sequence of notes: a whole note G2, followed by quarter notes A2, B2, C3, D3, E3, F3, G3, and a whole note A3. Fingerings are indicated below the staff: 9 8 7 #, 6 #, 5 #, 6 7 #.

254

Musical staff for measure 254 in bass clef with a key signature of two sharps. The staff contains a sequence of notes: a whole note G2, followed by quarter notes A2, B2, C3, D3, E3, F3, G3, and a whole note A3. Fingerings are indicated below the staff: #, 6, #, 6.

259

Musical staff for measure 259 in bass clef with a key signature of two sharps. The staff contains a sequence of notes: a whole note G2, followed by quarter notes A2, B2, C3, D3, E3, F3, G3, and a whole note A3. Fingerings are indicated below the staff: #, 6, #, 6.

265

Musical staff for measure 265 in bass clef with a key signature of two sharps. The staff contains a sequence of notes: a whole note G2, followed by quarter notes A2, B2, C3, D3, E3, F3, G3, and a whole note A3. Fingerings are indicated below the staff: 5, 6 4, 5 3, #6.

270

Musical staff for measure 270 in bass clef with a key signature of two sharps. The staff contains a sequence of notes: a whole note G2, followed by quarter notes A2, B2, C3, D3, E3, F3, G3, and a whole note A3. Fingerings are indicated below the staff: 7 #6, #6, 7 6.

278

Musical staff for measure 278 in bass clef with a key signature of two sharps. The staff contains a sequence of notes: a whole note G2, followed by quarter notes A2, B2, C3, D3, E3, F3, G3, and a whole note A3. Fingerings are indicated below the staff: 9 7 6 5 6 7 #6 4 3, 4 2, 9 8 7 6.

288

Musical staff for measure 288 in bass clef with a key signature of two sharps. The staff contains a sequence of notes: a whole note G2, followed by quarter notes A2, B2, C3, D3, E3, F3, G3, and a whole note A3. Fingerings are indicated below the staff: 6 5, 7, #5, 9 8.

296

Musical staff for measure 296 in bass clef with a key signature of two sharps. The staff contains a sequence of notes: a whole note G2, followed by quarter notes A2, B2, C3, D3, E3, F3, G3, and a whole note A3. Fingerings are indicated below the staff: 6 5, 3, 7, 6, 4 3 6, 5 6 6 5, #4, 5 6 6 5.

[6] Guay tous

Musical staff for measure 313 in bass clef with a key signature of two sharps and a 3/4 time signature. The staff contains a sequence of notes: a whole note G2, followed by quarter notes A2, B2, C3, D3, E3, F3, G3, and a whole note A3. Fingerings are indicated below the staff: 6, #6.

313

Musical staff for measure 322 in bass clef with a key signature of two sharps. The staff contains a sequence of notes: a whole note G2, followed by quarter notes A2, B2, C3, D3, E3, F3, G3, and a whole note A3. Fingerings are indicated below the staff: 6, #.

322



332



342



351



358



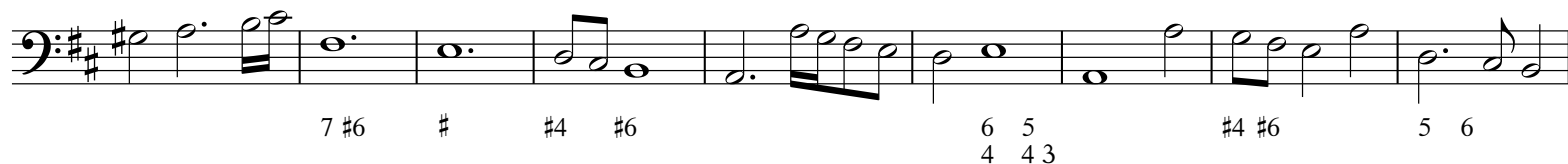
365



[7]



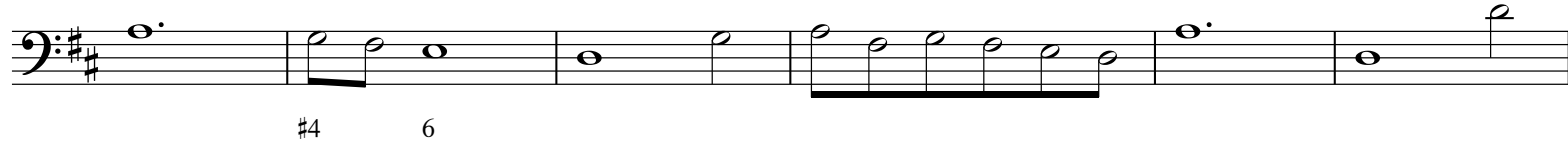
383



392



402



408





479

5 6 7 #6 5 7 #6 5 6 7 6 # 6 6 #

489

# # 6 5 4 3 5 4 3

498

*acc. seul*

5 6 7 6 6 5 # 4 #3 #

507

*tous*

6 7 6 7 #3 6 4 5 4 3 #

[9]

*acc. seul*

5 6 4 3 6 5 5 4 3

517

# #6 # 6 6 5 5 4 4 3 #6 6 #6 6 # 6 7 6 5 3 4 4 3

525

7 6 #5

529

5 4 3 5 4 #3 5 4 #3 9 8 7 7 6 5 #6 9 7 6 5 4 3 6 #5

534

539

*acc. seul*

548

553

557

565

572

576





644

*acc. seul*

Musical staff for exercise 644 in bass clef with a key signature of one sharp (F#). The staff contains a sequence of notes with a slur over the first three notes. Below the staff are the following fingering numbers: 4, 2, 7, 6, 5, 4, 3, #6, 5, 4, 3, #, 6.

653

*tous*

Musical staff for exercise 653 in bass clef with a key signature of one sharp (F#). The staff contains a sequence of notes with a slur over the first four notes. Below the staff are the following fingering numbers: 6, 5, 5, 4, 3, 6, 5, 4, 3, 5, 6, 5, #, 6, 5, 6, 5, 4, 3, 4, 3.

661

Musical staff for exercise 661 in bass clef with a key signature of one sharp (F#). The staff contains a sequence of notes. Below the staff are the following fingering numbers: #6, 6, 6.

668

Musical staff for exercise 668 in bass clef with a key signature of one sharp (F#). The staff contains a sequence of notes with a slur over the first six notes. Below the staff are the following fingering numbers: 5, 6, 5, 6, 5, 6, 5, 3, 4, 3, 4, 3, 4, 3, 6, 7, 6, 5, 3, 4, 4, 3.

677

Musical staff for exercise 677 in bass clef with a key signature of one sharp (F#). The staff contains a sequence of notes with a slur over the last three notes.

683

Musical staff for exercise 683 in bass clef with a key signature of one sharp (F#). The staff contains a sequence of notes with a slur over the last four notes. Below the staff are the following fingering numbers: 7, 3, 6, 4, 5, 4, 3.