

**HENRY
PURCELL**
(1659-1695)

THE FAIRY QUEEN
Semi-opera in Five Acts

Z.629

TRUMPET I

Trumpet 1

2

Act. I

No 1 - 3 Tacet.

No. 4 (Tacet) Rondeau. Ad^{to} $\frac{3}{4}$ ^{Vio. 1^o}

6 (Fine) A 8

B 8 Da capo at Fine.

No 5 (Act I - Overture.)

in C.

Allegro maestoso.

A B

piu f

Vivo 10 B mf

Trumpet. 1

Handwritten musical score for Trumpet 1, consisting of eight staves of music. The score includes various musical notations such as notes, rests, slurs, and dynamic markings. A circled 'C' and a boxed 'D' are present in the second and fourth staves respectively. The piece concludes with a 'pizz' marking.

Nos 6 — 8. Tacet.

End of Act. I

Trumpet 1

4

Act II

Nos 9 & 10. Tacet.

N^o 11. (Tacet.) *All^o* $\frac{3}{4}$ *(Alto.)*

may the God of wit in . . .

12 G while Echo, while H 11

re - mote, Re - peat each note re - 5 - peat each note, each

K

note *Tutti.* ECHO.

N^o 12 $\frac{3}{4}$ *f*

Soli. *Tutti.* *pp* *f*

Soli *Tutti* *pp* *f*

Soli. *Tutti* *pp* *f* *Soli* *Tutti* *pp* *f*

Soli. *Tutti* *pp* *f* *Soli.* *Tutti* *pp* *f*

Soli. *Tutti* *pp* *f* *Soli.* *Tutti* *pp* *f*

Trumpet 1

Tutti
f

Soli
pp

Tutti
f

Soli
pp

Tutti
f

Soli
pp

Tutti
f

Soli
pp

Tutti
f

5

Nos 17 - 19 Tacet

End of Act II

Act III

Tacet.

Trumpet 1

6

Act IV

No 30

Symphony.

Allegro maestoso. $\text{G}\sharp\text{F}\sharp$ C f

A

più f

Canzona. $\text{G}\sharp\text{F}\sharp$ $\frac{2}{4}$ *II*

Poco f *Poco f*

B *mf*

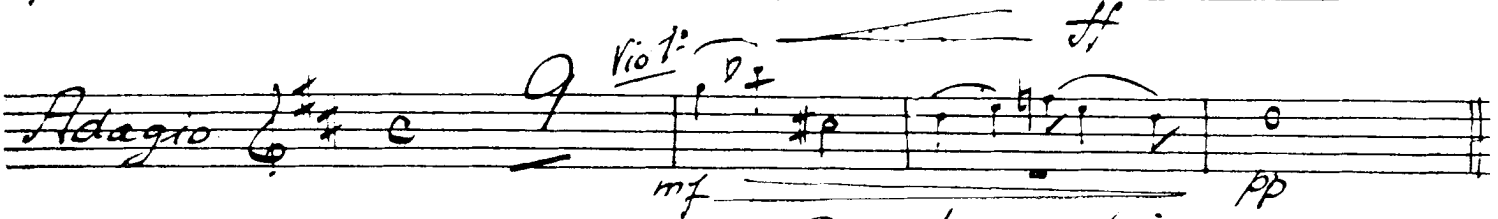
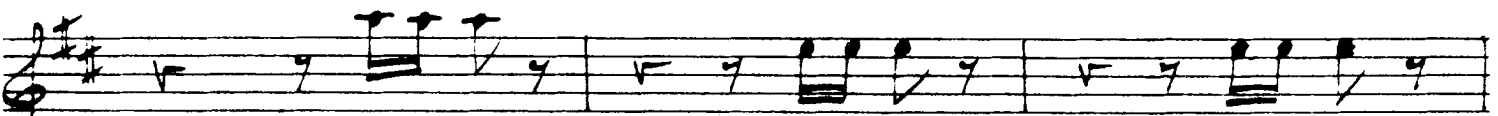
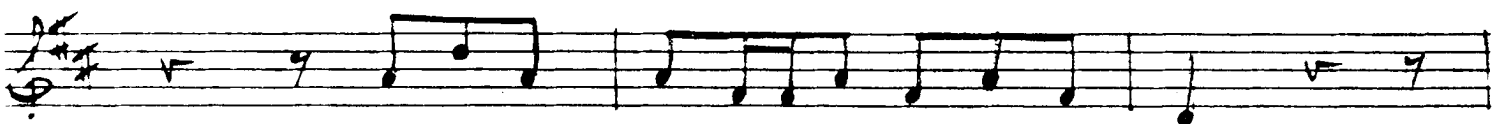
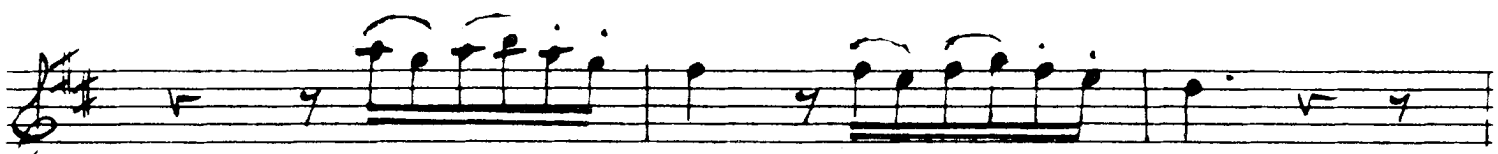
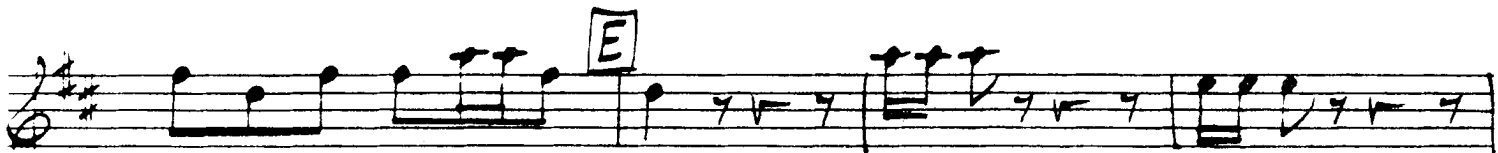
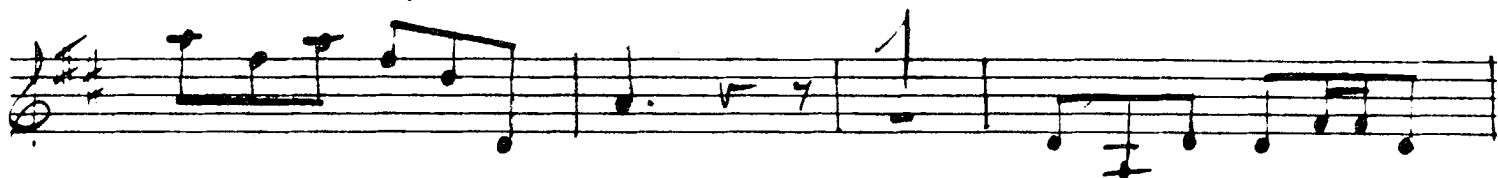
C *mf*

Trumpet 1

The image shows a handwritten musical score for Trumpet 1 and Violin 1. The score is written on five staves. The first four staves are for the Trumpet 1 part, and the fifth staff is for the Violin 1 part. The key signature is two sharps (F# and C#), and the time signature is 3/2. The first staff of the Trumpet part begins with a dynamic marking of *f* and a fermata over a quarter rest. The second staff has dynamic markings of *f* and *h*. The third staff has dynamic markings of *f* and *h*. The fourth staff has dynamic markings of *f* and *h*. The fifth staff is labeled *Largo* and has a dynamic marking of *pp*. The score includes various musical notations such as notes, rests, slurs, and dynamic markings.

Trumpet I

8 D.



Dat. S. at fine.

Trumpet I

Nº 31.

Lacet.

Nº 32. *All.^o Voice.* *Voice* $\frac{3}{4}$ $\frac{2}{}$ $\frac{13}{}$

(Lacet.)

Nº 33. *Entry of Phoebus.*

Con trio. $\frac{3}{4}$

All.

Trumpet I

10 N° 34.

(Tacet.)

And.^{te} con moto. 11

Voice 9 Più All.^{te} 1 8

16 Bassi 7^o 2^o

N° 35.

Chorus. "Hail! Hail!"

Maestoso

3 4

Più All.^{te} 3 5 *meno f*

P

2

Maestoso. 9 *Più f*

Trumpet I

Allegro

No 36 = 38 Tacet

No 39

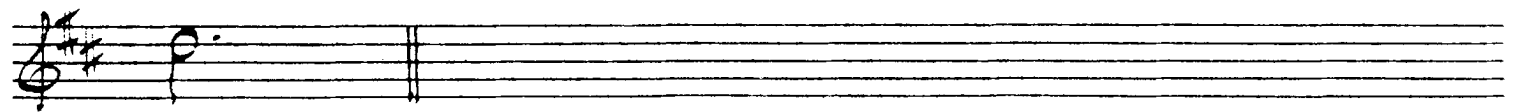
(Tacet) *Lento.* $\frac{3}{2}$ 15 Y *Voice* 9:9 12

13

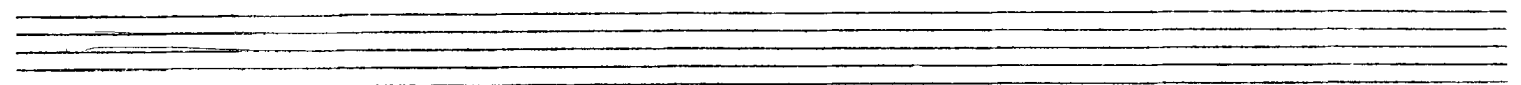
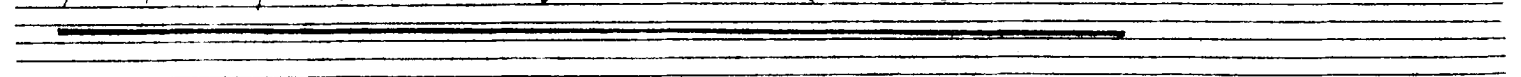
re-store him and sing as before.

Trumpet 1

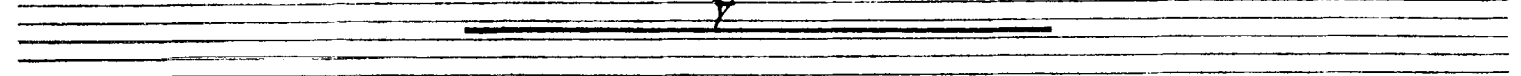
12



N° 40. Fourth Act Tune.



End of Act. 4



Trumpet 1

Act. V

Nº 41 — 43. Tacet.

Nº 44 Entry Dance.
(Tacet.)

Handwritten musical notation for Violin I and II parts, measures 7-11. The notation is on two staves. The first staff is labeled 'Viol. I^o' and the second staff is labeled 'Viol. II^o'. Both staves show a treble clef and a common time signature. The music consists of quarter and eighth notes. There are dynamic markings 'p.' (piano) and 'f.' (forte) in both parts. The first staff has a measure rest of 9. The second staff has a measure rest of 11. There are first and second endings marked '1^o' and '2^o' in both parts.

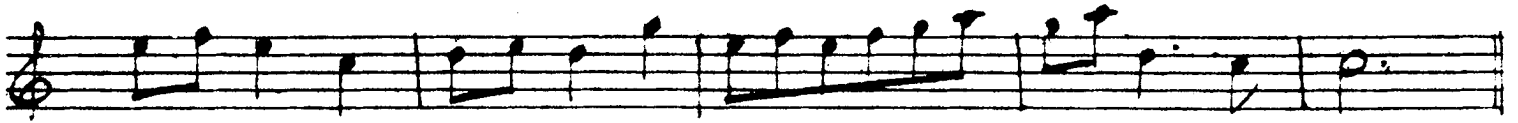
Nº 45. Symphony.

Handwritten musical notation for Symphony, measures 1-10. The notation is on three staves. The first staff is labeled 'Allegro' and 'Maestoso'. The time signature is 3/4. The music consists of quarter and eighth notes. There is a measure rest of 10. A first ending is marked 'A'.

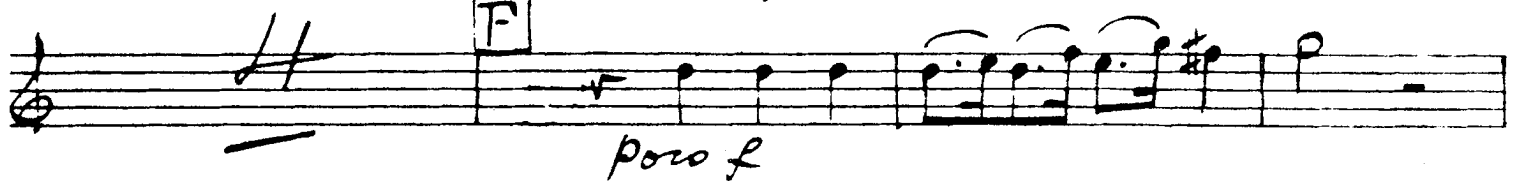
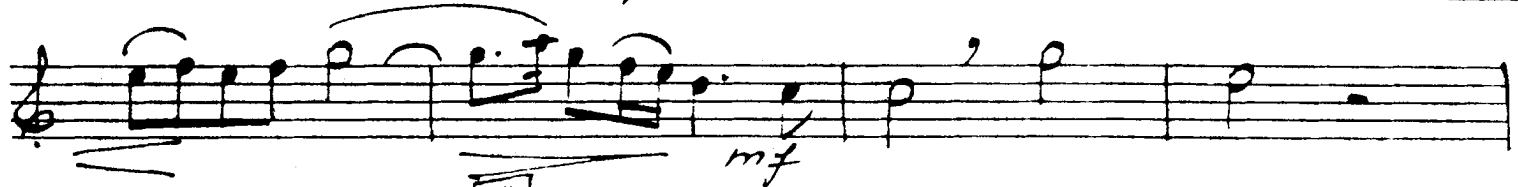
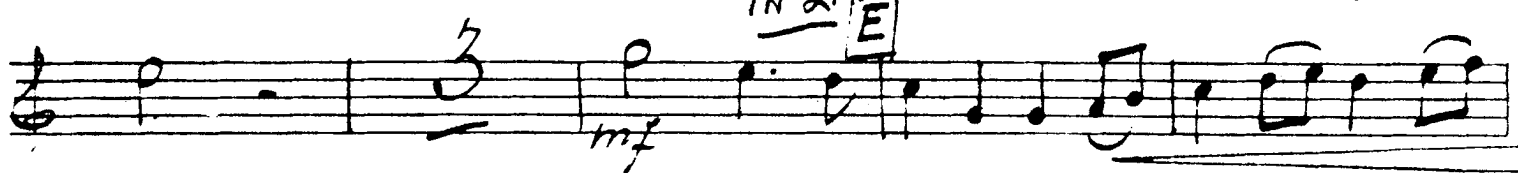
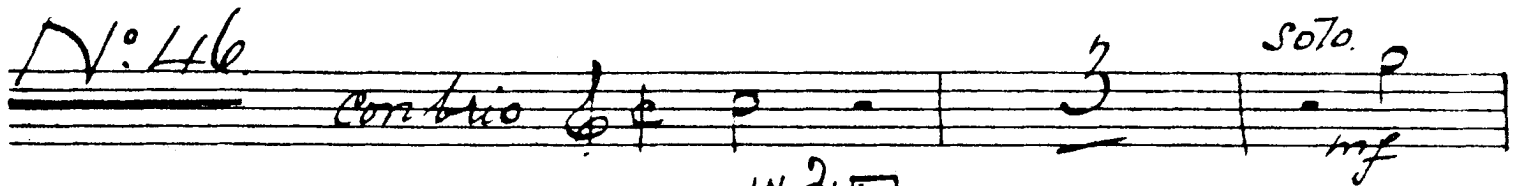
14

Trumpet 1

B



C



Trumpet I

Handwritten musical score for Trumpet I, measures 1-10. The score is in treble clef with a key signature of one flat. It includes dynamic markings such as *mf*, *pp*, and *f*. A box containing the letter 'H' is located at the beginning of the first staff. The music features a mix of quarter notes, eighth notes, and sixteenth notes, with some slurs and accents.

Handwritten musical score for Trumpet I, measures 10-11. Measure 10 includes the tempo marking *Grazioso* and the time signature $\frac{3}{4}$. Above the staff, there are markings for *Vio 1:* and *Voice*. The lyrics "ex-Fremes, There was no room then no" are written below the staff. Measure 11 includes the lyrics "am-be".

Handwritten musical score for Trumpet I, measures 11-12. Measure 11 includes the tempo marking *con brio.* and the dynamic marking *mf*. The lyrics "tion wanted aim" are written below the staff. A box containing the letters 'Ee' is located above the staff. Measure 12 continues the melodic line.

Handwritten musical score for Trumpet I, measures 12-13. Measure 12 includes the dynamic marking *mf*. Measure 13 includes the dynamic marking *p*. The music concludes with a double bar line and a repeat sign.

Trumpet I

16 FF

Handwritten musical score for Trumpet I, measures 16-49. The score consists of 11 staves of music in treble clef. It includes various dynamics such as *p*, *mf*, *f*, and *pmo f*, and articulation marks like accents and trills. Boxed letters FF, GG, HH, and KK are placed above specific notes. The piece concludes with a double bar line and a 4/4 time signature.

N^o 47. 48 4. 49 acet.

Trumpet 1.

No 50

17

(Tacet.) *Via 1^o*

- joyce Hark! hark how joyce and the world seems to

- joyce re- re- joyce.

No 51. "Hark the ech'ing air"

Solo.

pp

mf

Hark! hark! the

and all a-round and all a-

wings. *pp*

Nº 52.

Lacet.

Nº 53.

Presto. 3/4 *Vio. 1º*

Maestoso 3/4 *(Solo Bass)*

1st Woman

no, they yield my torch no light. turn, turn, then thine

here, And catching, catching

1º *2º* *(Bass.)*

All: modº *(2. Sop. & 1 Bass.)*

They shall be as happy. care, care,

L

and ev'ry time the sun shall display His night.

M

1º *2º*

N

Trumpet 1.

19

Handwritten musical notation for Trumpet 1, measures 19-21. The first staff (treble clef) contains a melodic line starting with a sixteenth-note run, followed by quarter and eighth notes. A slur covers the first six notes. The second staff continues the melody with quarter notes. The third staff concludes the phrase with a quarter note and a double bar line. The dynamic marking *pid f* is written below the first staff.

N^o 54. Tacet.

End of Opera.

