

**HENRY  
PURCELL**  
(1659-1695)

**THE FAIRY QUEEN**  
Semi-opera in Five Acts

Z.629

**TRUMPET II**

Trumpet 2

2

Act I

Nº 1 - 3. Tacet.

Nº 4. Rondeau.

(Tacet.)

All<sup>to</sup>

Vio. P.

Nº 5. (Act I - Overture)

in C.

Trumpet 2

3

Handwritten musical score for Trumpet 2, measures 1-8. The score is written on seven staves in G major (one sharp). It includes various musical notations such as notes, rests, slurs, and dynamic markings. A box labeled 'C' is present in the second measure, and a box labeled 'D' is present in the fourth measure. The dynamics range from 'poco f' to 'piu f'.

Nos 6 - 8 Tacet.

End of Act. I

Trumpet 2

4

Act II

No. 9 & 10. Tacet.

No. 11. (tacet.) *All.<sup>o</sup>*  $\frac{3}{4}$  (F7to)

may The God of Wit in - -

White Echo white

re-note. Re-peat each note, re-peat each note, each

note

No. 12. "Echo"  $\frac{3}{4}$  *f*

*Soli* *Tutti*

*Soli* *Tutti*

*Soli* *Tutti*

*Soli* *Tutti*

*Soli* *Tutti*

*Soli* *Tutti*

*Soli* *Tutti*

*Soli* *Tutti*

*Soli* *Tutti*

Trumpet 2

*Tutti* *Soti* *Tutti*

*Soti* *Tutti*

*Soti* *Tutti*

*Soti* *Tutti*

*Soti*

No. 17 - 19. Tacet.

End of Act II

Act III

Tacet.

Trumpet 2

6

Act IV

N° 30.

Symphony

*Allegro maestoso*  $\text{G major}$   $\text{C}$   $\text{1}$   $f$

**A**  $f marc.$

$\text{più } f$

*Andante*  $\text{G major}$   $\text{2}$   $poco f$

$TR$   $TR$

**B**

$mf$

**C**  $p$   $mf$

Trumpet 2

7

Handwritten musical notation for Trumpet 2, first staff. It features a treble clef, a key signature of two sharps (F# and C#), and a 2/2 time signature. The notation includes a fermata over the first measure, followed by a measure with a '2' above it and a 'f' below it. The subsequent measures contain eighth notes with 'TR' markings above them, and a final measure with a fermata and a '7' above it.

Handwritten musical notation for Trumpet 2, second staff. It continues the melody from the first staff with eighth notes and a fermata at the end.

Handwritten musical notation for Trumpet 2, third staff. It continues the melody with eighth notes, some with accents (>), and a fermata at the end.

Handwritten musical notation for Trumpet 2, fourth staff. It is labeled "Largo" and shows a change in time signature to 3/2. It includes a measure with a "15" above it and a measure with a "7" above it.

Handwritten musical notation for Trumpet 2, fifth staff. It is labeled "Vio. 1°" and "pp". It features a treble clef, a key signature of two sharps, and a 4/4 time signature. The notation includes a fermata over the first measure, followed by a measure with a "40" above it, and a final measure with a fermata.

8 \$.

Trumpet 2

*Allegro*  $\text{F}\sharp\text{C}$   $\frac{6}{8}$   $f$

2

E

F

3 *mf* *crese.*

*f*

G

*p.* (Fine.)

*Adagio.*  $\text{F}\sharp\text{C}$   $\frac{9}{8}$  *mf*  $\text{F}\sharp$   $\text{B}\flat$   $\text{C}\sharp$

*pp* Dal \$ al Fine.



Trumpet 2

No. 31.

Tacet.

No. 32.

(Tacet.)

All.<sup>o</sup> Vivace

3/4

2

13

10

13

All.

No. 33

Entry of Phoebus

Con. bruo

3/4

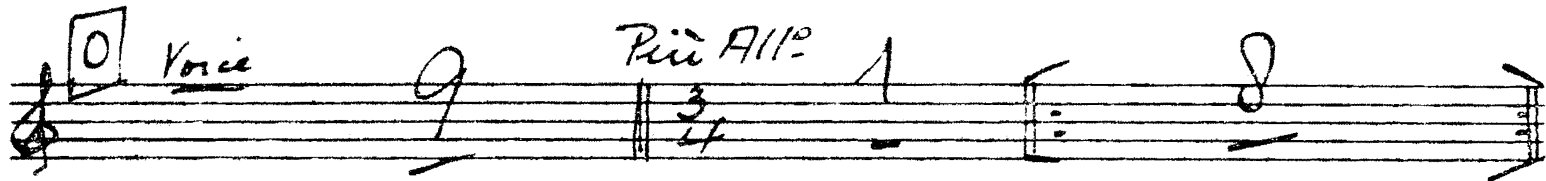
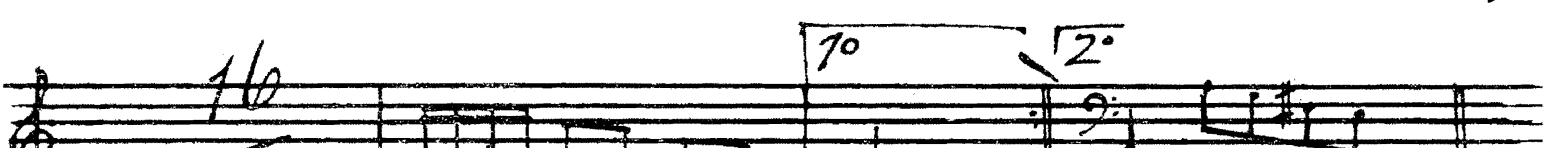
Trumpet 2 Trumpet 2

10

No. 34

(Tacet.)

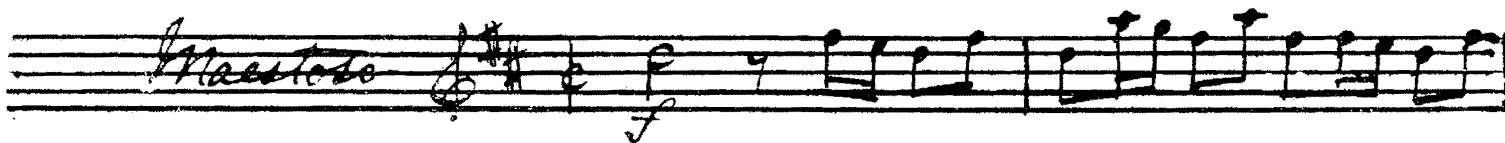
*And<sup>te</sup> con moto*  11

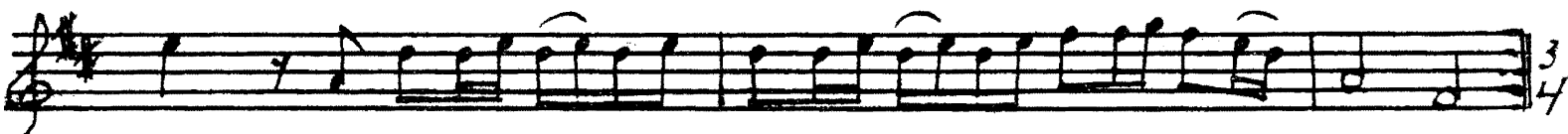
 9 *Piu All<sup>o</sup>*  8

16  10  2 *Bassi.*

No. 35.

Chorus. "Hail! hail!"

*Maestoso*  *f*

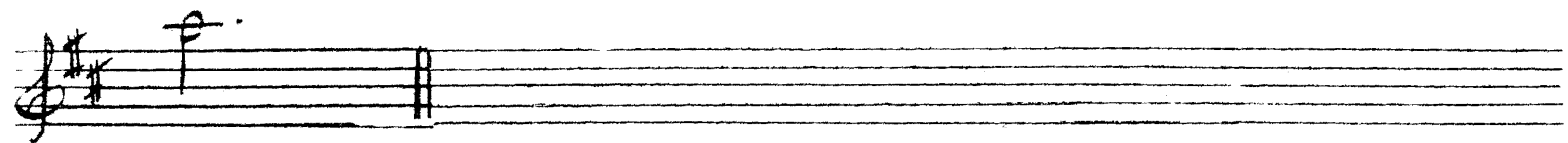
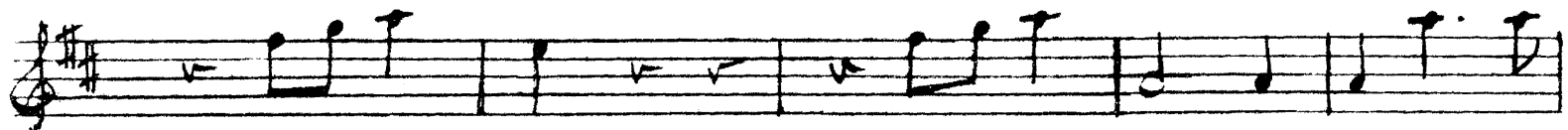
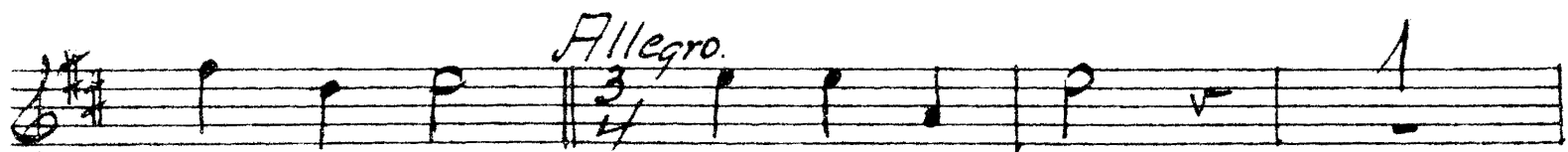
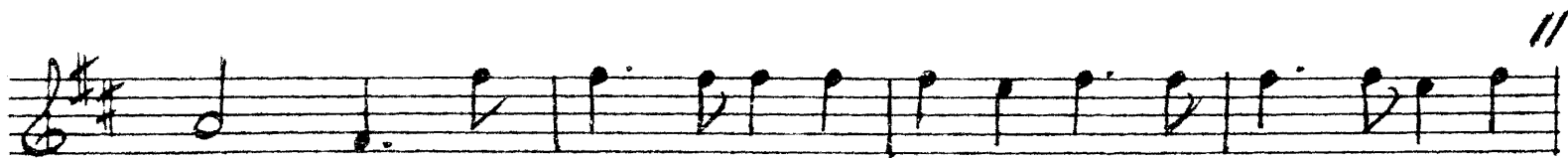
 *f*

*Piu All<sup>o</sup>*  *p* *meno f*  *p*

 *p*  *p* *Maestoso.*  *p*

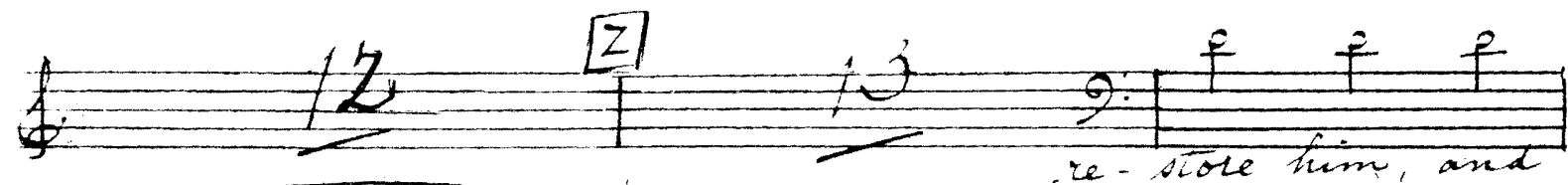
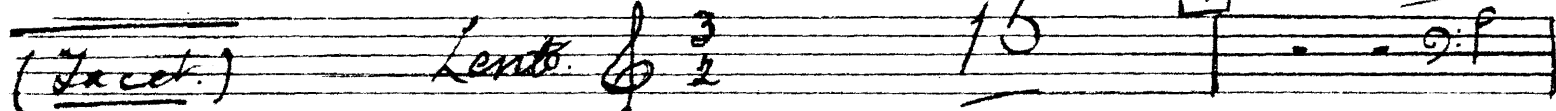
 *p*

Trumpet 2



No. 36 = 38 Tacet.

No. 39



# Trumpet 2

12

*Maestoso.* *f*

*Allegro*  $\frac{3}{4}$

**R**

N° 40. Fourth Act Tune - Lacet.

End of Act H.

C Trumpets Trumpet 2

Act V.

No 41 — 43. Lacet.

No 44. Entry Dance

(Lacet.)

*Vio. I*

9 11

No 45. Symphony

*Allegro  
maestoso.*

C 2

9 11

*Bassi*

B 2

C 8



Trumpet 2

1<sup>o</sup> 2<sup>o</sup> (Bass.)

A musical staff in treble clef with a key signature of one flat. It features a first ending bracket labeled '1<sup>o</sup>' and a second ending bracket labeled '2<sup>o</sup>'. The notes are: G4, A4, Bb4, A4, G4, F4, E4, D4. There are some handwritten annotations, including a circled 'H' and a '5' below the staff.

All: **K** (2 Sop. & Bass)

*mod<sup>to</sup>*

A musical staff in treble clef with a key signature of one flat. It starts with a first ending bracket labeled '1<sup>o</sup>' and a second ending bracket labeled '2<sup>o</sup>'. The notes are: G4, A4, Bb4, A4, G4, F4, E4, D4. Below the staff, the lyrics 'They shall be as happy' are written. There are also some handwritten annotations, including a circled 'H' and 'care. care' below the staff.

**L**

A musical staff in treble clef with a key signature of one flat. The notes are: G4, A4, Bb4, A4, G4, F4, E4, D4. Below the staff, the lyrics 'and ev'ry time the sun shall display his night.' are written.

**M**

A musical staff in treble clef with a key signature of one flat. The notes are: G4, A4, Bb4, A4, G4, F4, E4, D4. Below the staff, the lyrics 'and ev'ry time the sun shall display his night.' are written.

1<sup>o</sup> 2<sup>o</sup>

A musical staff in treble clef with a key signature of one flat. It features a first ending bracket labeled '1<sup>o</sup>' and a second ending bracket labeled '2<sup>o</sup>'. The notes are: G4, A4, Bb4, A4, G4, F4, E4, D4.

**N**

A musical staff in treble clef with a key signature of one flat. The notes are: G4, A4, Bb4, A4, G4, F4, E4, D4. There are some handwritten annotations, including a circled 'N' and a 'Piu f' below the staff.

*Piu f*

A musical staff in treble clef with a key signature of one flat. The notes are: G4, A4, Bb4, A4, G4, F4, E4, D4. There are some handwritten annotations, including a circled 'N' and a 'Piu f' below the staff.

A musical staff in treble clef with a key signature of one flat. The notes are: G4, A4, Bb4, A4, G4, F4, E4, D4.

No. 54. Tacet.

End of Opera.

