

GIOACCHINO ROSSINI

MESSA SOLENNE

N. 1 Kyrie Tace

TIMPANI

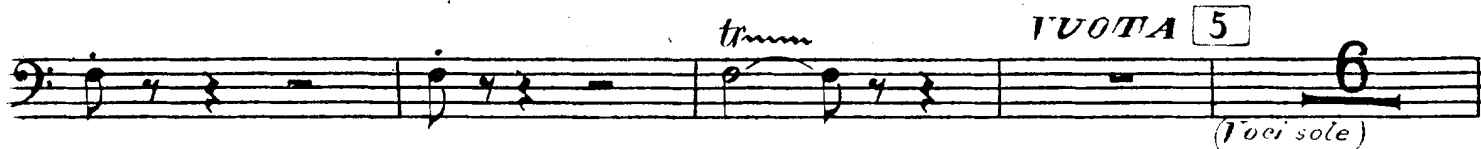
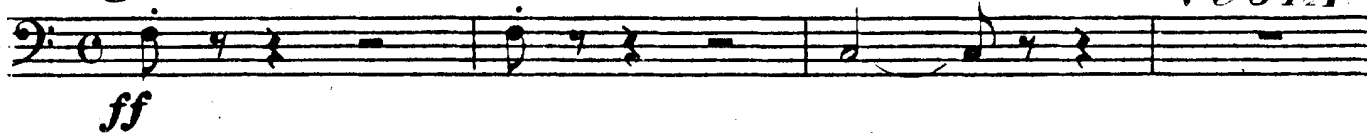
in Fa

N. 2 Gloria

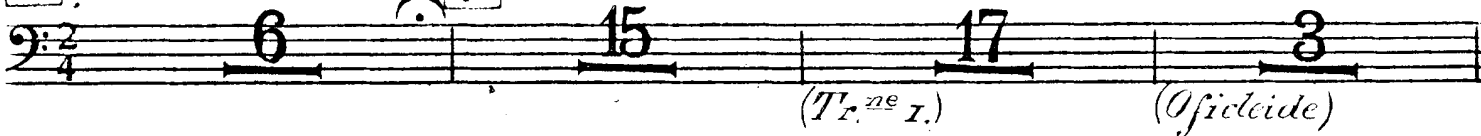
Allegro maestoso

tr

VUOTA



6. *Andantino mosso*



N. 3. 4. 5. 6. Tace

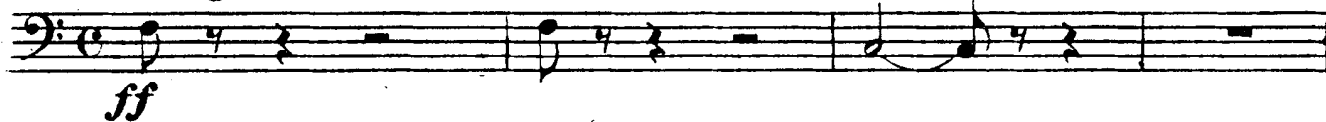
N. 7 Cum Sancto Spiritu

in Fa

Allegro maestoso

tr

VUOTA



ff

ff

26 *Allegro* **27**

Tr.^{bc} e Tr.ⁿⁱ *Tr.^{nc} I.* *Tr.^{bc} e Tr.ⁿⁱ* *Tr.^{nc} I.*

21 **15** **3** **3**

Tr.^{bc} e Tr.ⁿⁱ

trm

ff *f*

tr *tr*

28 **29**

27 **16** **21**

(ott.)

Ob.
pp

Cornetta e Tr.^{bc} I.

tr

30 **15**

ppp *cresc.* *f* *ff*

Tr.^{nc} I.
e Tr.ⁿⁱ

ff

2 **6** **31**

ff

1 **1** **1**

fff

32

trm

ff

tr
 (Voci sole) **ff**

animando un poco
 (Voci sole) (Legni e Violini) **f** *tr*

tr

ff

tr
fff

tr
fff

N. 8 Credo

in Mi

Allegro cristiano

tr
ff *tr* **ff**

tr
 Archi e Legni: **f** *tr* **ff** 33

tr
ff Archi e Legni: **f** *tr* **ff** 34

trmm
ff **22** **35** **3** **9** **1** **2** **3**
(Trⁿⁱ) (Tr^{ce} e Corni) **ff**

4 **5** **6** *trmm* **36** *trmm*
ff **ff**

trmm **27** *vvo*
ff

N. 9 Crucifixus

Andantino sost.^{to} **37** **20** **28** **3**
(Tr. ne I.)

N. 10 Et Resurrexit

I. Tempo *trmm*
2 **ff**
(Voci sole)

trmm **8** *trmm* *trmm*
ff **ff**

38 **39** **40** *Violini I.* *pp* *Violini II* **11**

Archi e Legni **f** *trmm* **1** *trmm* **41** **15** **10**
ff **ff**

Violini I. **ff** *Violini II e Fl.* *trmm* **3**
fff

trmm *trmm* **7**
ff **ff**

42: *Allegro brillante* *V.ⁿⁱ II.* *pp* *V.ⁿⁱ I.*

V.ⁿⁱ I. Fl. e Ob *pp* *cresc.*

44 *tr* *fpp* *cresc.*

mf cresc. *f* *ff*

tr *ff*

tr *fff* *tr*

tr *fpp* *cresc.* *rinforz.*

f *ff* *tr* *ff*

tr
fff

tr

tr
fff

tr
fff

tr
fff

8 10 45

N. 11. 12. 13. *Tace*

N. 14 *Agnus Dei*

in Mi
Andante sost.^{to}

7 13 12 5 3 6

(Tr.^{ue} I.) (Oficleide)

1.^{ma} I. *ppp*

Fl. e V.ⁿⁱ I.

50 51 52

tr tr tr

fff

tr

5

XXIII *ff*

FINE

