

LUCIO SILLA OVERTURE

K 135

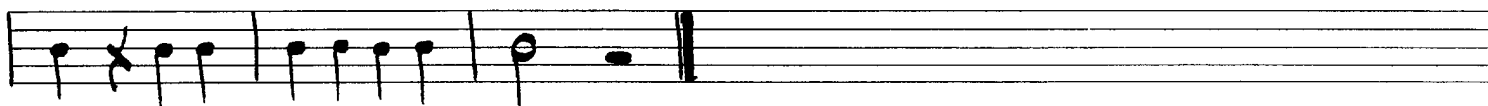
W. A. MOZART

TIMPANI

MOLTO ALLEGRO

The musical score for the Timpani part of the Lucio Silla Overture, K. 135, by W. A. Mozart, is written in bass clef, common time, and 2/4 meter. The tempo is marked 'MOLTO ALLEGRO'. The score consists of ten staves of music. The first staff begins with a bass clef, a common time signature, and a 2/4 time signature. The music features a rhythmic pattern of eighth and sixteenth notes with rests. Measure numbers 6, 7, 16, 18, and 4 are indicated above the staves.

TIMPANI



ANDANTE-TACET

MOLTO ALLEGRO (D.A.)

