

String Quartet III

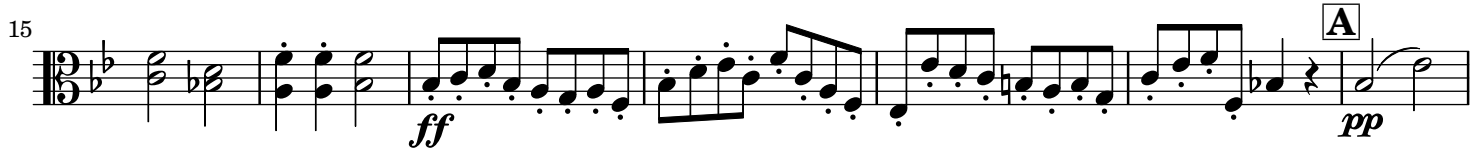
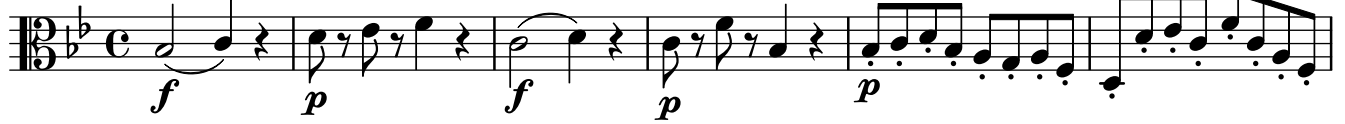
Viola

F. Schubert

I.

D 36

Allegro



* In this edition, "Schubert's long accent" problem is not considered; every accent-like symbol in the original score (Breitkopf & Härtel, 1893) is written as a normal accent ">". Players can take it as a probable hairpin ">" in some cases.

52 C
G.P. *p*

60 *decresc. pp*

66

72 *cresc. f ff*

80 D
ff p

88 1.
pp

96 2.
f

104 *ff* G.P.

111 E
ff fz fz ff

Viola

119

123

126

F

129

132

135

138

141

G

147

153

161

H

168

173

174

182

183

188

190

198

199

206

207

212

213

219

220

226

227

232

II.

Andante

D 36

4

5

8

10 *mf* *pp* *p* *cresc.*

16 *p* *pp* **A**

22 *mf* *pp*

28 *fz* *pp* *p* **B**

36 *pp* **C**

43

49 **D**

55 *f* *p*

III. Menuetto

Allegro ma non troppo

D 36

f *p* *f* *p* *mf*

10 *f*

20 *fp* *fp*

30 *f* *p* >

41 *cresc.* *f* *p*

53 *f* *p* *f* **A**

62

71 G.P. *f* *p* *f* *p*

81 Trio 2 *ppp*

93 *dolce* *pp*

103 *ppp*

114

126 *pp* **B**

137 *f* *p* *pp*

148 *p* D.C.

IV.

Allegretto

Musical score for Viola, Op. 36, No. 4, by Franz Schubert. The score is in 2/4 time, key of B-flat major, and consists of 100 measures. It features various dynamics including *p*, *pp*, *cresc.*, *f*, *ff*, and *fz*, along with articulation marks like accents and slurs. The piece includes first and second endings at measures 17-18 and a Grand Finale (G.P.) section starting at measure 44.

Dynamics and markings include: *p*, *cresc.*, *f*, *pp*, *poco a poco cresc.*, *f*, *cresc. ff*, *ffz*, *fz*, *fz*, *fz*, *fz*, *G.P.*, *p*, *pp*, *cresc.*, *f*, *cresc. poco*, *ff*, *p*, *cresc.*, *f*, *p*, *p*, *ff*.

Section markers: **A** (measures 51-60), **B** (measures 67-76), **4** (measures 77-80).

111 **C**
p

120
cresc. *f* *ff*

129

138 **D**
ff

146 G.P.

157 **E**
pp *cresc.* *f* *p*

166 *f*

175 *p* *ff* *fp* *p*

184 *pp*

194 **F**
cresc.

203 *ff* *ff* *f*

212 *p*

219

226 *ppp* *cresc.* **G** *dolce*

235 *f* *p*

246 *cresc.* *f* *p*

257

268

279 **H** *p* *p*

289 *pp* *cresc.* *f*

298 *cresc.*

306 **I**

317 *fff* *p* *cresc.*

326 *f* *ff*