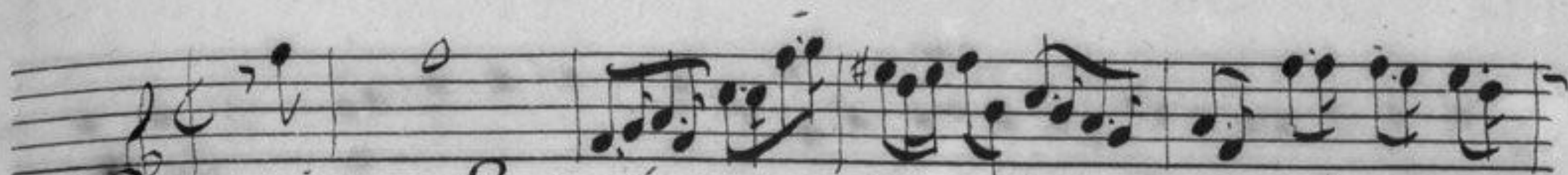


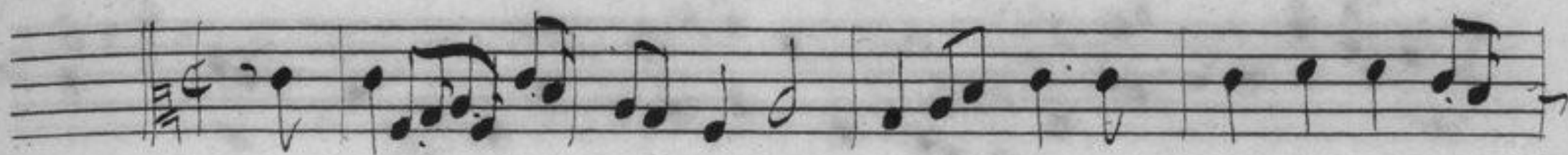
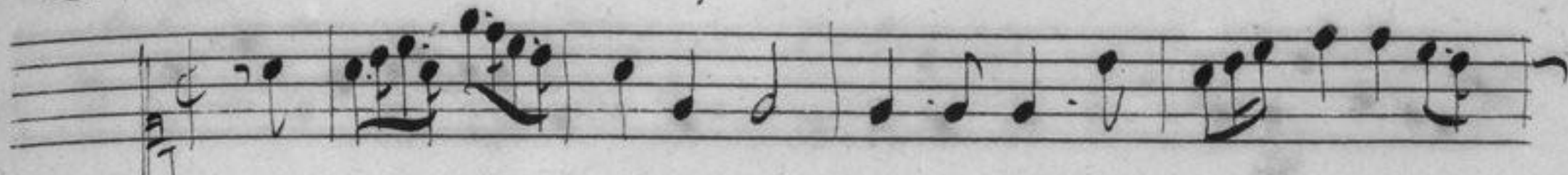
# Ballet.

45

## D'Il eraites amoureux.



Premiere Entrée pour la Maison de France.





Handwritten musical notation on five staves. The first staff is in treble clef with a key signature of one sharp (F#). The second and third staves are in bass clef. The fourth staff is in treble clef with a key signature of one sharp. The fifth staff is in treble clef with a key signature of one sharp and contains some handwritten annotations above the notes.

Two empty musical staves, one above the other, consisting of five lines each.

Handwritten musical notation on five staves. The first staff is in treble clef with a key signature of one sharp. The second and third staves are in bass clef. The fourth and fifth staves are in treble clef with a key signature of one sharp.

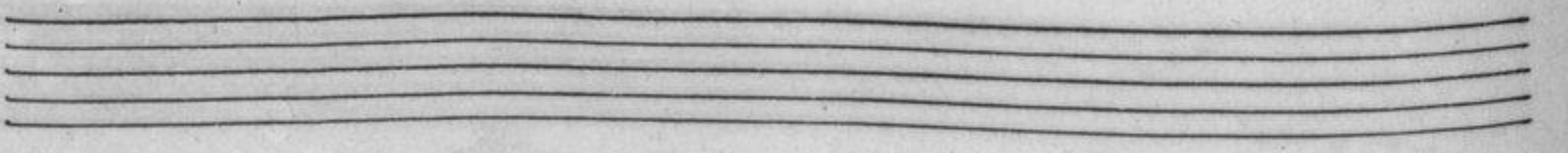
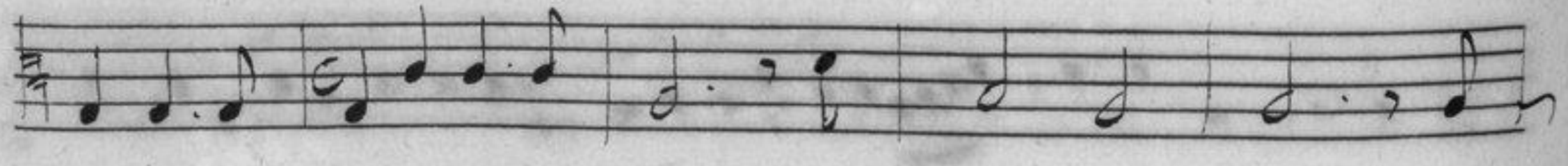
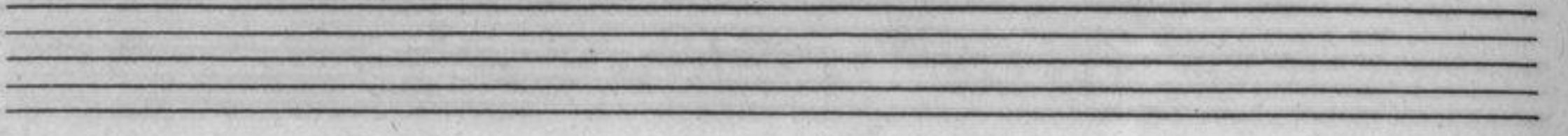
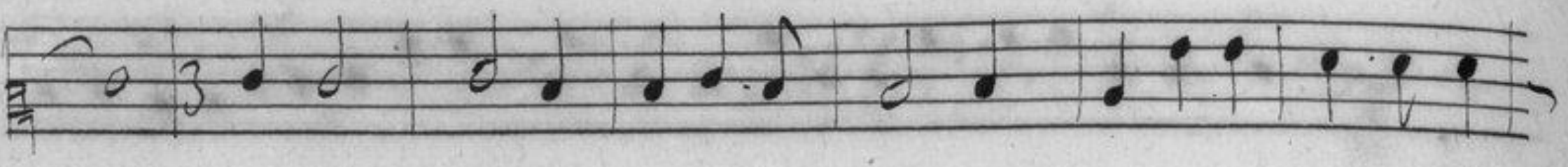
Two empty musical staves, one above the other, consisting of five lines each.



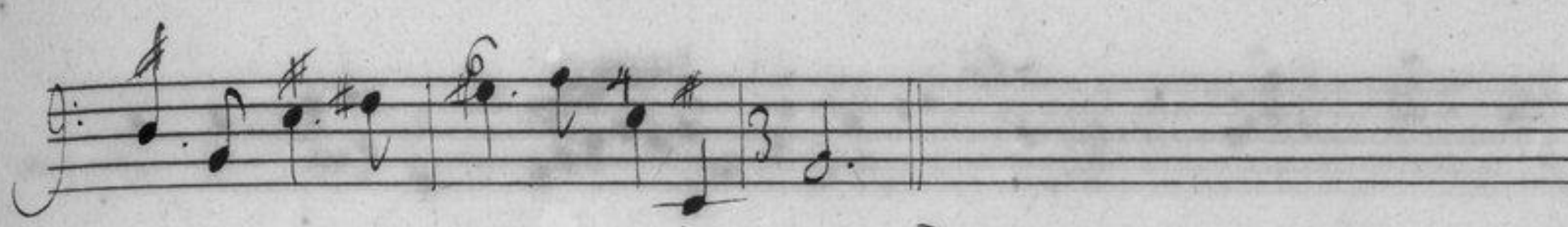
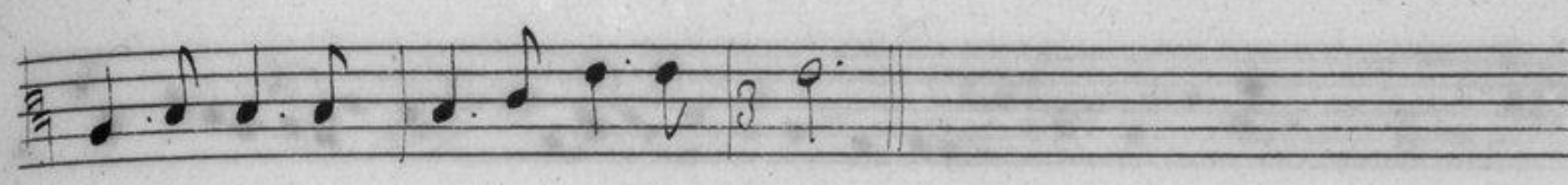
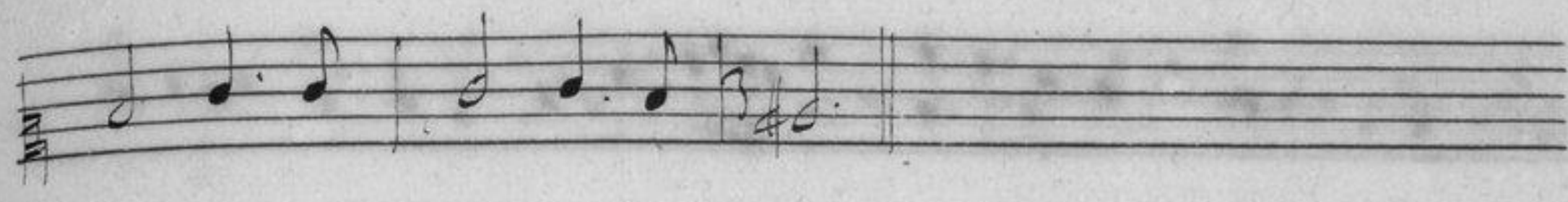
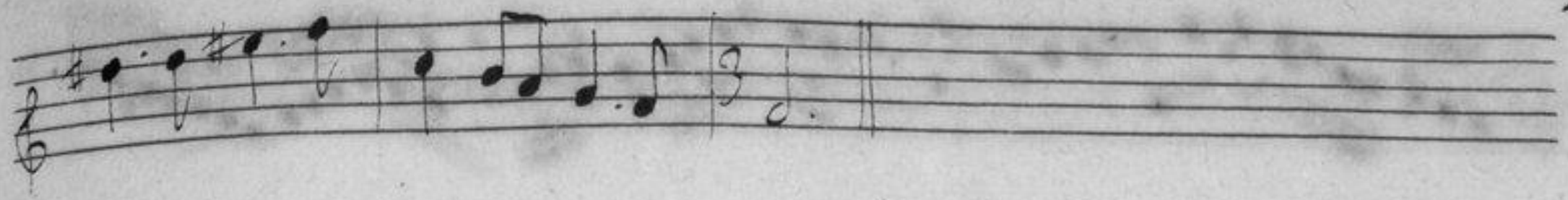
2<sup>e</sup> Entrée pour la Maison d'Autriche.

This page contains a handwritten musical score for a piece titled "2<sup>e</sup> Entrée pour la Maison d'Autriche". The score is written on ten staves. The first staff is a treble clef with a common time signature (C). The second staff is a bass clef with a common time signature (C). The third and fourth staves are bass clefs with a common time signature (C). The fifth staff is a bass clef with a common time signature (C). The sixth staff is a treble clef with a common time signature (C). The seventh staff is a bass clef with a common time signature (C). The eighth staff is a bass clef with a common time signature (C). The ninth staff is a bass clef with a common time signature (C). The tenth staff is a treble clef with a common time signature (C). The music is written in a style characteristic of the 18th or 19th century, with various note values, rests, and accidentals. There are some markings above the notes, possibly indicating fingerings or ornaments. The paper shows signs of age, including some staining and discoloration.

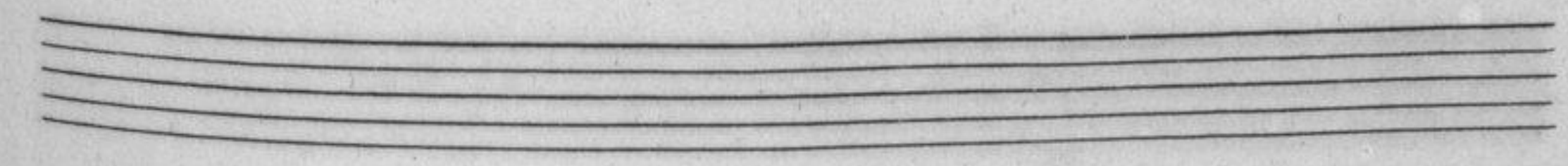
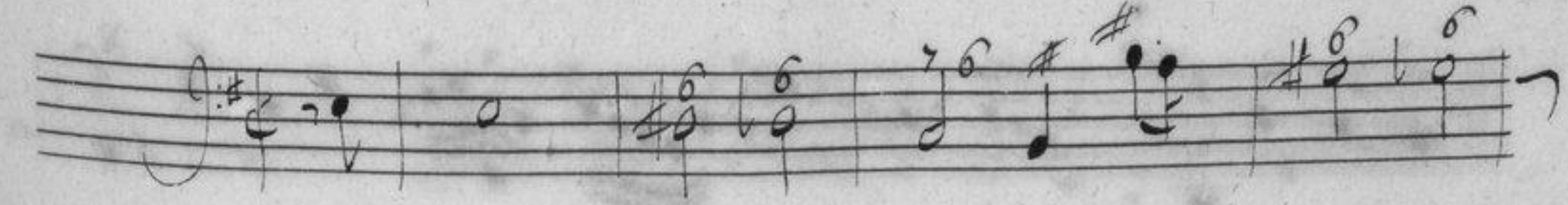
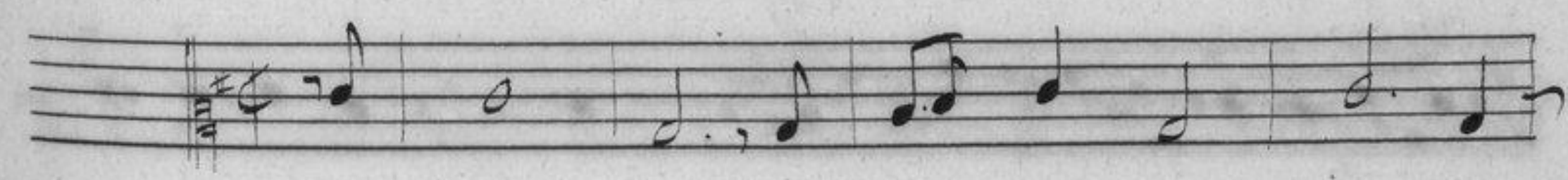
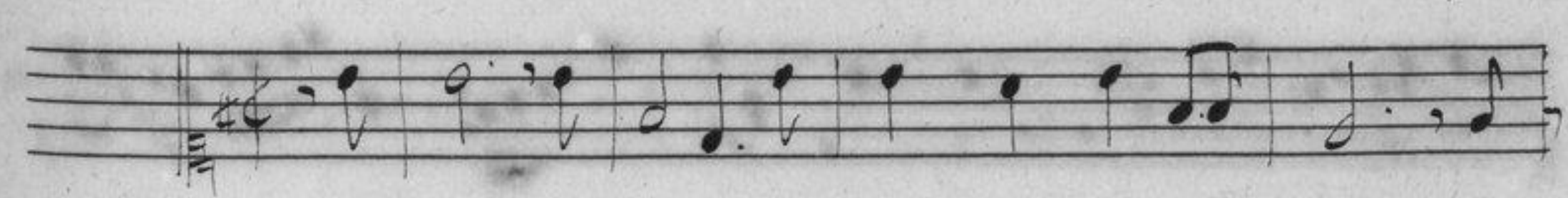




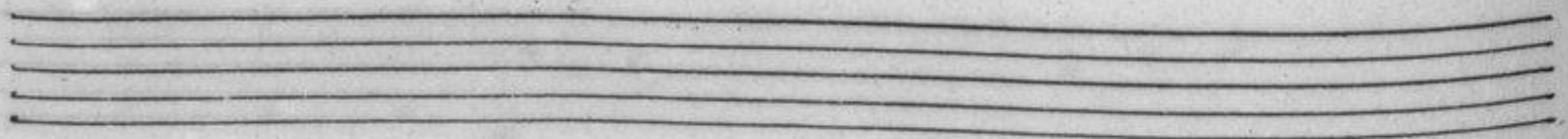
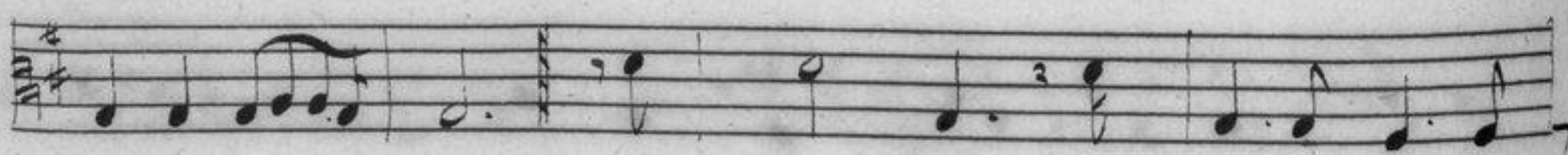
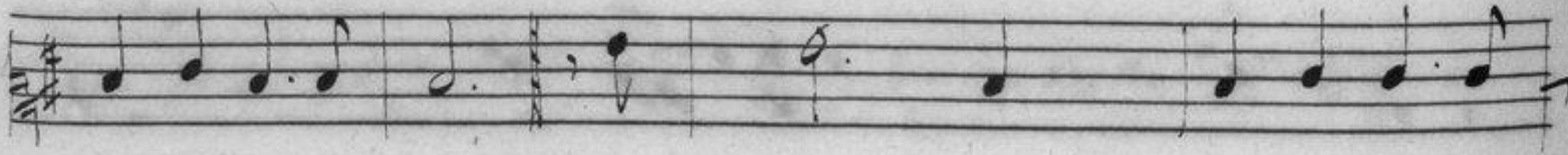
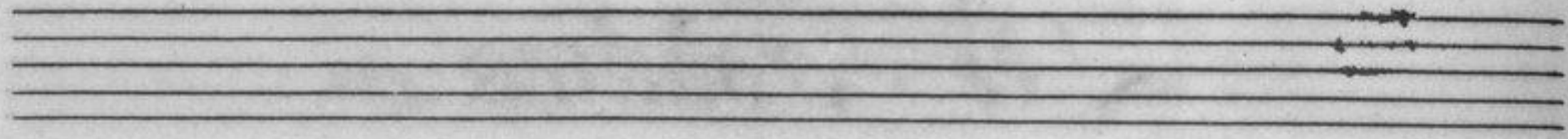
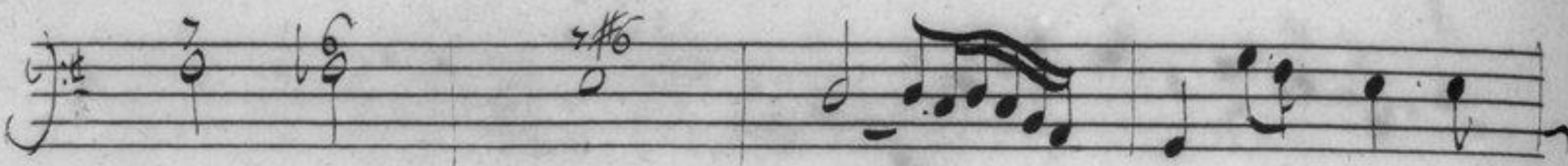
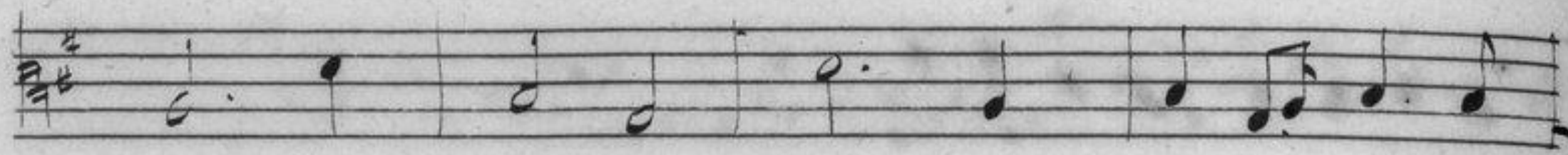
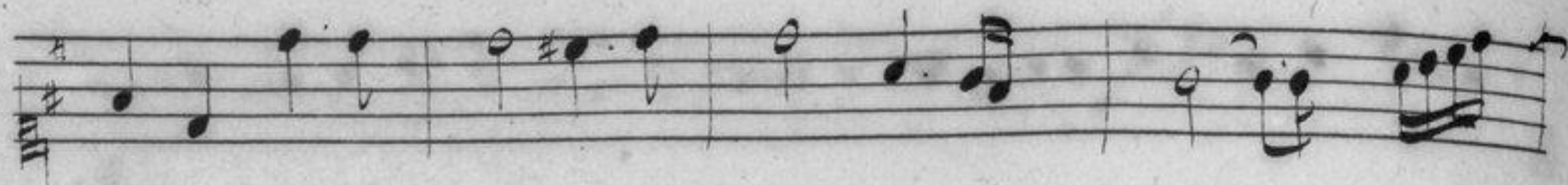




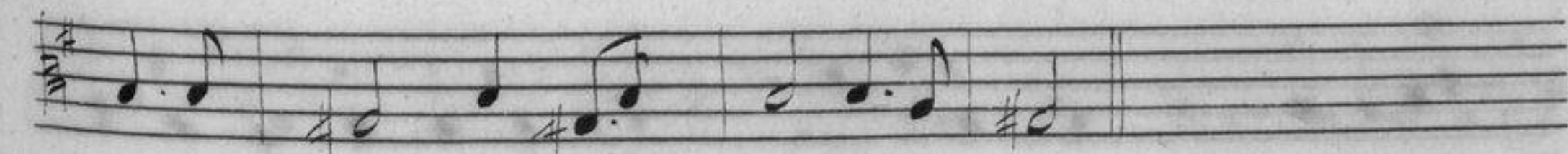
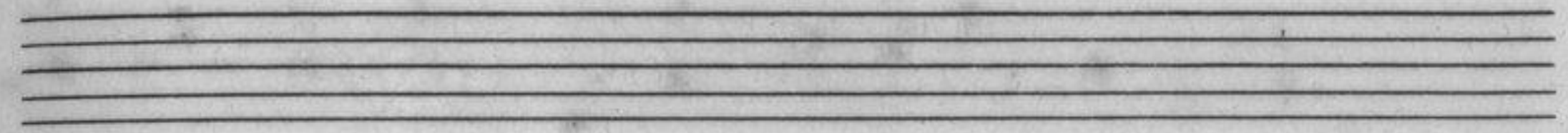
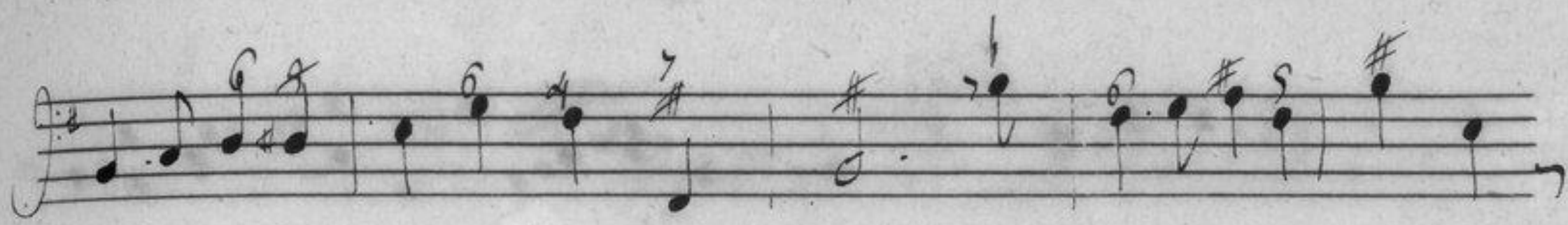
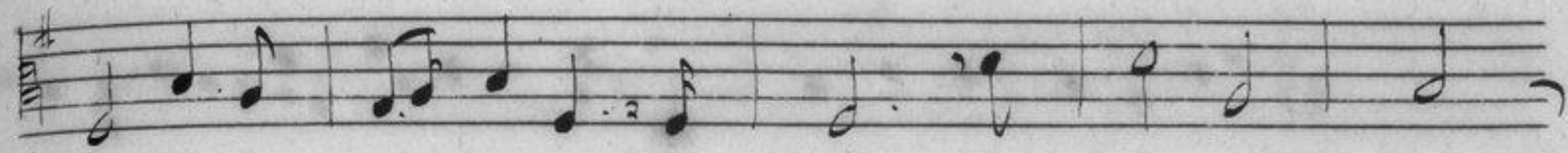
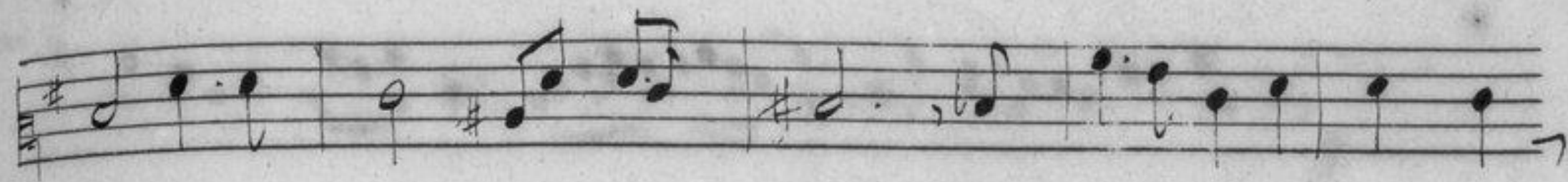
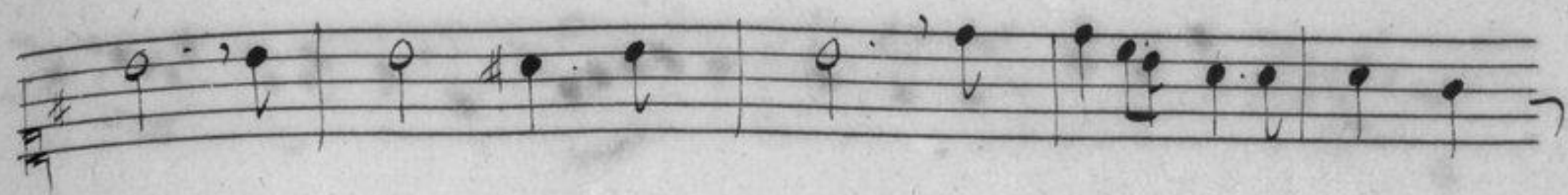
*Les Foudreaux.*





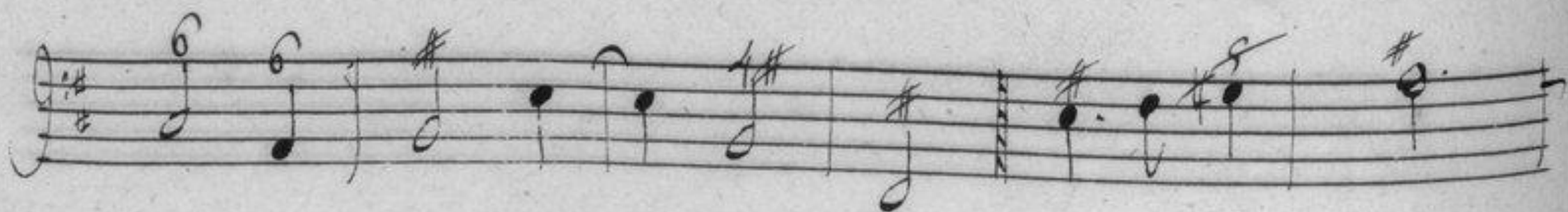
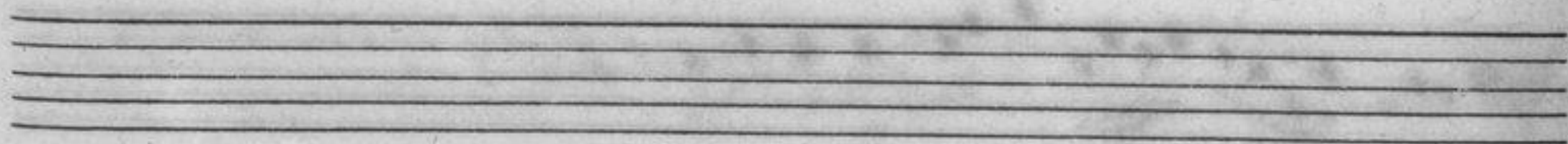
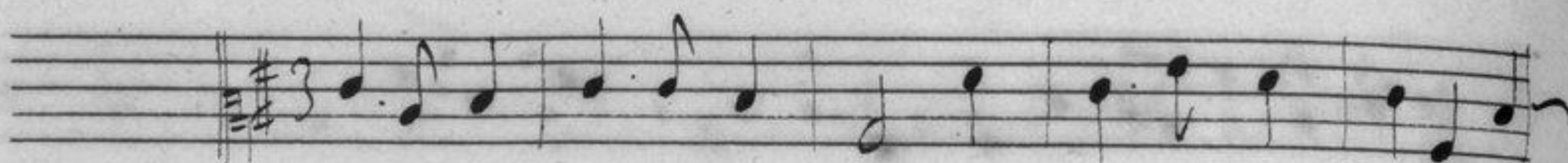




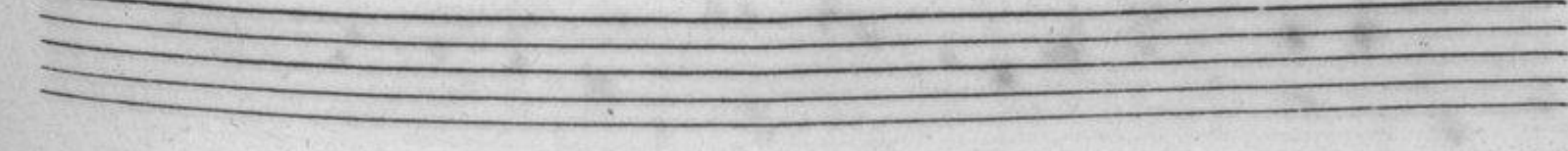
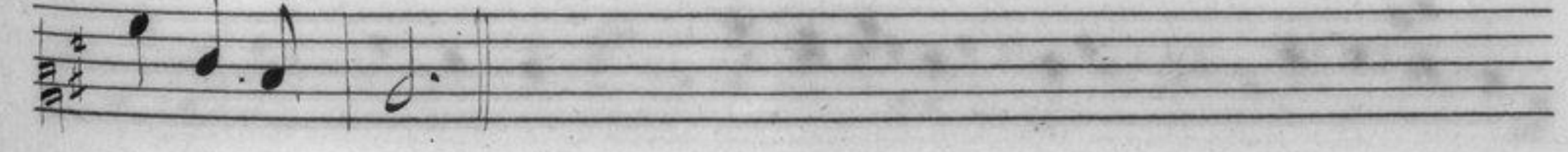
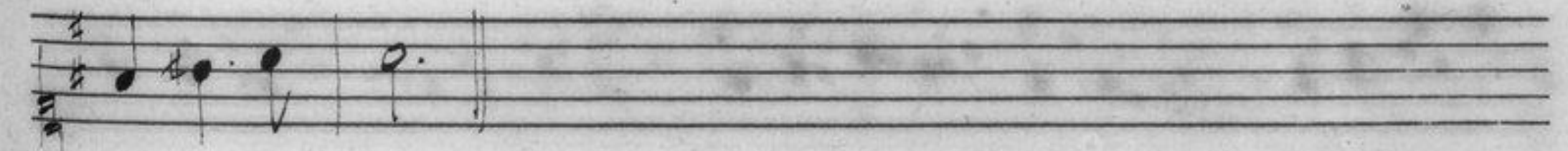
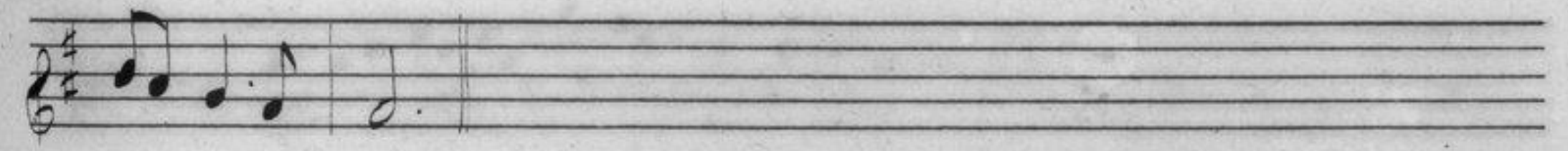
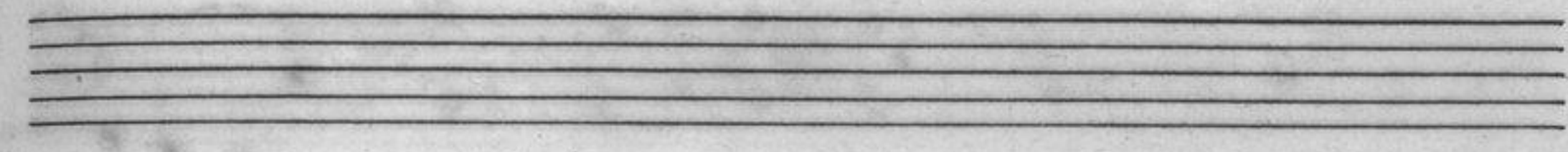




# Les Septuora.

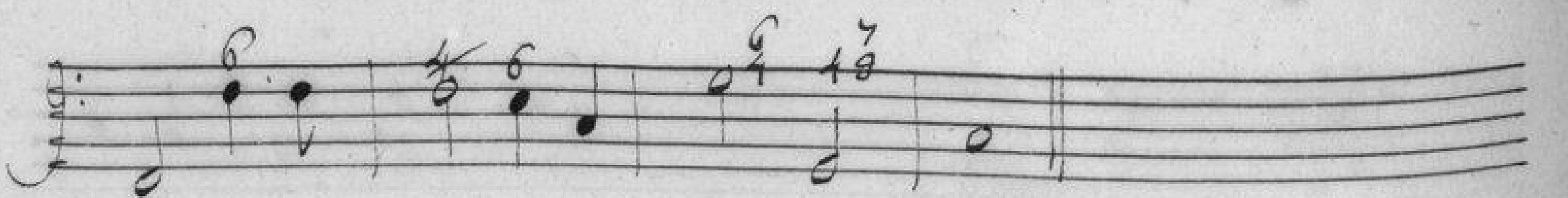
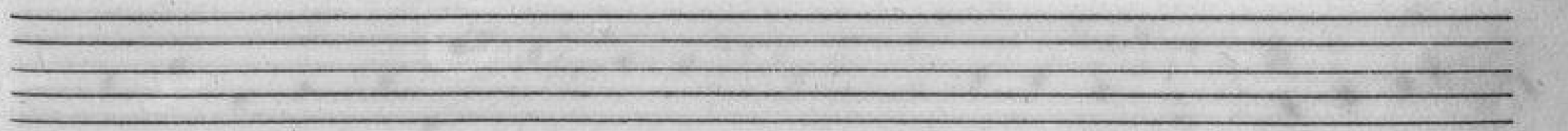
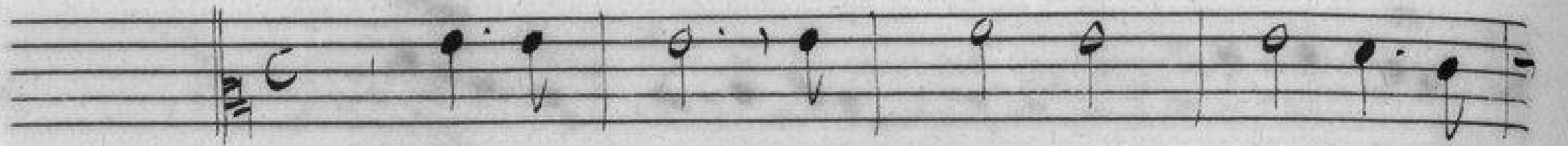








*Suite de Mara.*

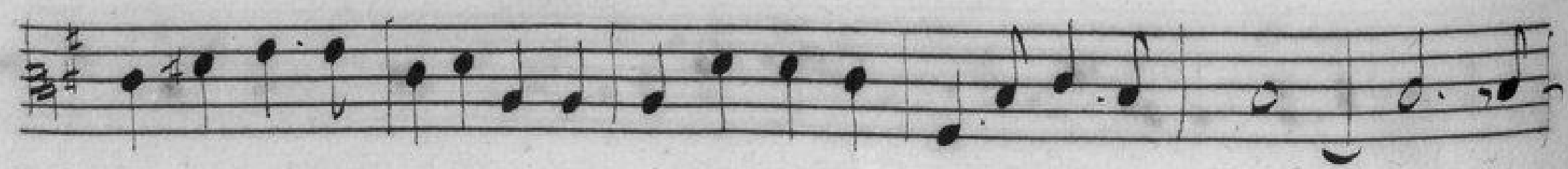
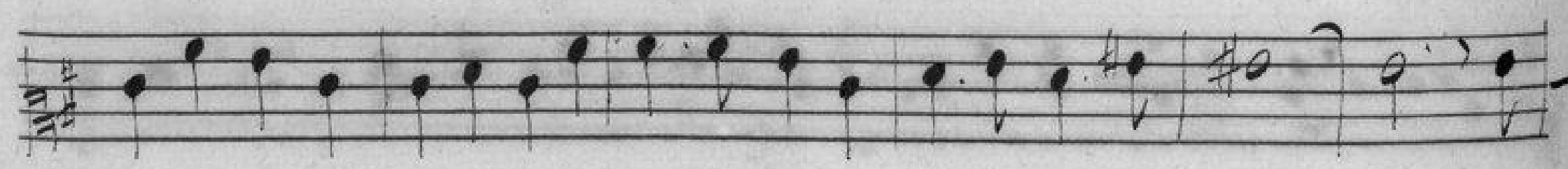
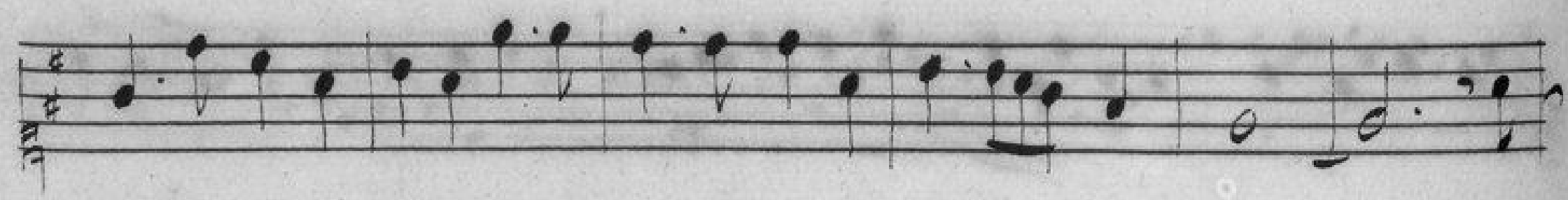
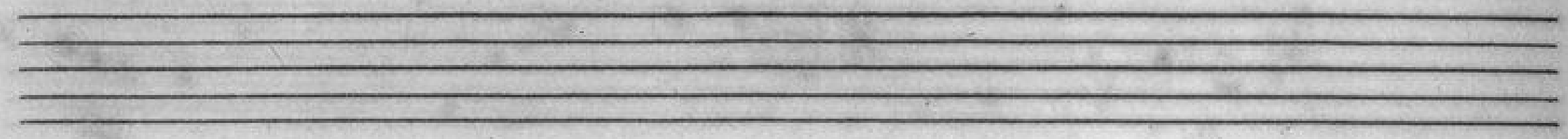




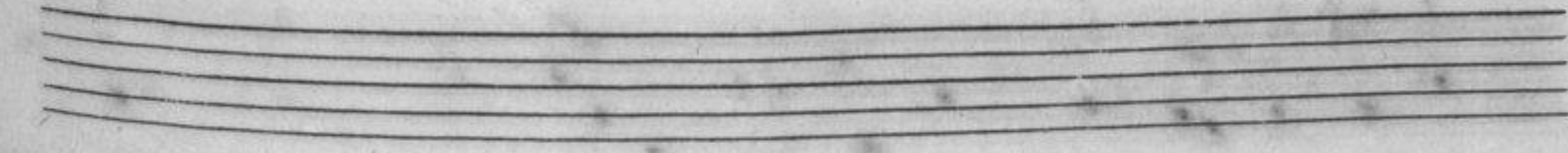
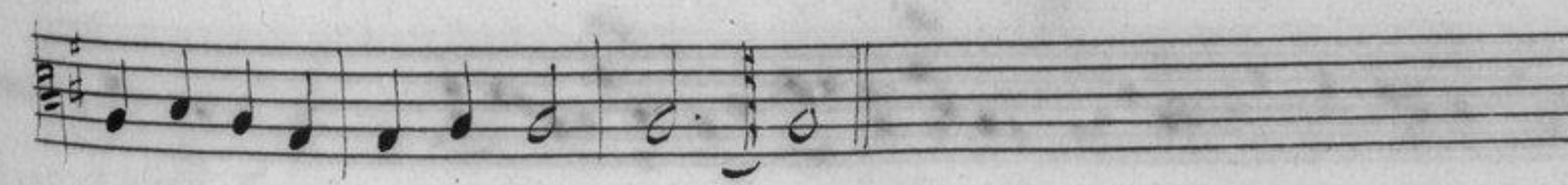
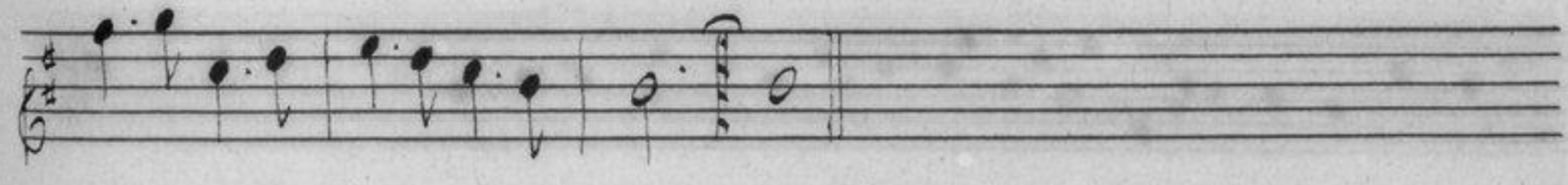
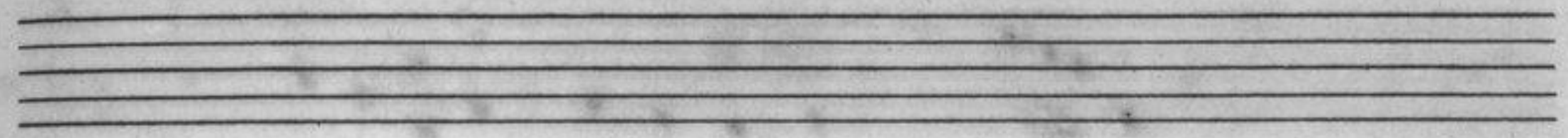
# *air des Songes*

A handwritten musical score for a piece titled "air des Songes". The score is written on ten staves. The first staff contains the title in cursive. The second staff begins with a treble clef, a key signature of one sharp (F#), and a common time signature (C). The music consists of a single melodic line. The third staff begins with a bass clef and a key signature of one sharp (F#). The fourth staff begins with a bass clef and a key signature of one sharp (F#). The fifth staff begins with a bass clef and a key signature of one sharp (F#). The sixth staff begins with a bass clef and a key signature of one sharp (F#). The seventh staff is empty. The eighth staff begins with a treble clef and a key signature of one sharp (F#). The ninth staff begins with a bass clef and a key signature of one sharp (F#). The tenth staff begins with a bass clef and a key signature of one sharp (F#). The music is written in a cursive, handwritten style. There are some annotations in the sixth and tenth staves, including a "6" and a "#8" in the sixth staff, and a "76" and a "#8" in the tenth staff. The paper shows signs of age and wear.











*Les Dames epouvantées,  
et les Ombres.*

A handwritten musical score consisting of ten staves. The first two staves contain the title in cursive. The following staves contain musical notation for a piece in 4/4 time. The notation includes treble and bass clefs, a key signature of one sharp (F#), and various rhythmic values such as eighth, sixteenth, and thirty-second notes, as well as rests and accidentals. The score is written in black ink on aged, slightly yellowed paper.



