

Contrabass

54 **D**
- 12 - *f*

61 **E**
f

68

75

81 **F**
p *pp*

88 *f*

95 **G**

102

108 **H**
pp

114

120 **I**

Contrabass

126



132



139



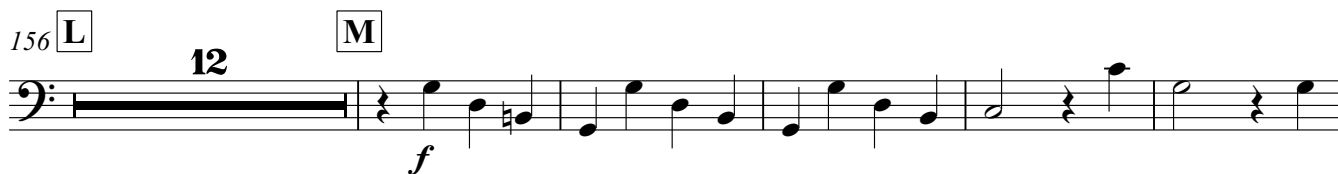
145



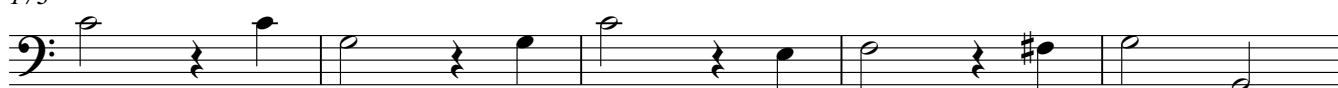
150



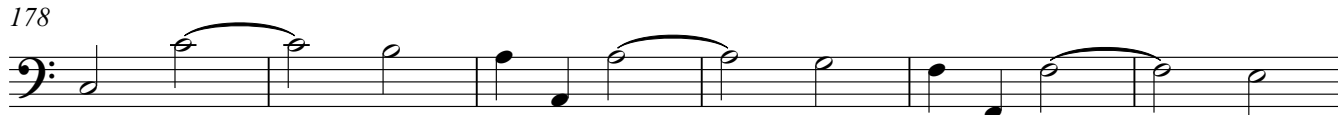
156



173



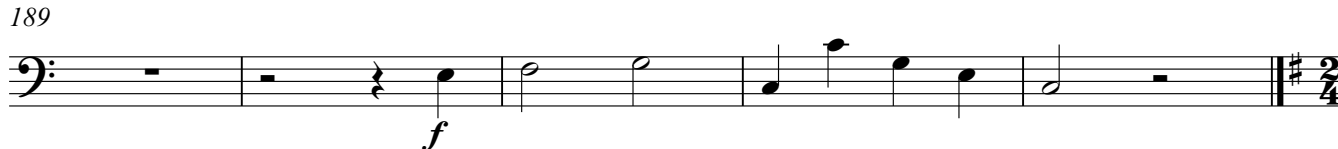
178



184



189



Contrabass

II

Andante ♩=60

sempre p

8

17 **A**

27 **B**

34

42 **C**

50 **D** 10

66 **E**

73

Contrabass

III. Finale

Presto ♩=88

f

10

21 **A**

16

B

f

46

57 **C**

10

D fl2

8

79 **E**

obl

9

92 **F**

f

103

G

6

Contrabass

118 **H**

f

130 **I**

pp

141 **J**

f

153 **K**

f

164

f

174 **L**

f

184

f

194 **M** **N**

16

f

220

f