

Basse
(Violoncello/ Violone)

Suite 1

(Musicalische Fürsten-Lust/ Tafelmusik)

Johann Fischer

$\text{♩} = 90$

1. Ouverture



Basse (Violoncello/ Violone)

2. Entrée

Musical score for '2. Entrée' in bass clef, 2/4 time, key of B-flat major. The score consists of three staves. The first staff contains measures 1-9. The second staff contains measures 10-16, with a first ending (1.) and second ending (2.) bracketed over measures 10-11. The third staff contains measures 17-24, ending with a double bar line and repeat dots.

3. Chaconne

Musical score for '3. Chaconne' in bass clef, 3/4 time, key of B-flat major. The score consists of nine staves. The first staff contains measures 1-10. The second staff contains measures 11-20. The third staff contains measures 21-35, with a fermata and a '7' (seven-measure rest) over measures 31-35. The fourth staff contains measures 36-45. The fifth staff contains measures 46-51. The sixth staff contains measures 52-57. The seventh staff contains measures 58-72, with a fermata and a '7' (seven-measure rest) over measures 71-72. The eighth staff contains measures 73-79. The ninth staff contains measures 80-87.

Basse (Violoncello/ Violone)

90



101



112



131



137



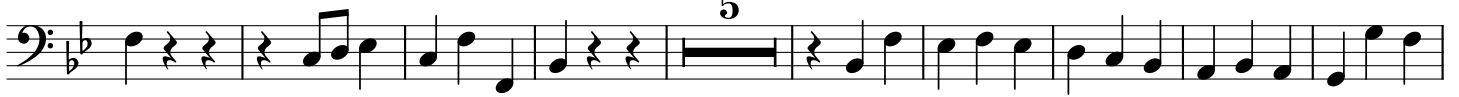
145



154



166



180



190



201



210



4. La Marche

Musical score for '4. La Marche' in bass clef, common time (C), and one flat (B-flat). The piece consists of four staves of music. The first staff starts with a whole rest followed by eighth notes. The second staff begins at measure 7 and includes a repeat sign. The third staff begins at measure 11. The fourth staff begins at measure 15 and ends with a double bar line. Numerous triplets are indicated throughout the score.

5. Menuet, qui se joue alternativement avec le suivant

Musical score for '5. Menuet' in bass clef, 3/4 time, and one flat (B-flat). The piece consists of three staves of music. The first staff starts with a quarter note followed by eighth notes. The second staff begins at measure 10. The third staff begins at measure 18 and ends with a double bar line.

Trio

Musical score for the 'Trio' section in bass clef, one flat (B-flat), and common time (C). It consists of three staves of music. The first staff begins with a piano (p) dynamic marking. The second staff begins at measure 9. The third staff begins at measure 15 and ends with a double bar line.

6. Bourrée



7



12



7. Menuet, qui se joue
alternativement avec le suivant



10



17



Trio



10



18

