

Basse
(Violoncello/
Violone)

Fasciculus III - Illustres Primitiae

(Florilegium secundum)

Georg Muffat

1. Overture

♩ = 90

10

19 **Allegro** 4

28

33

38

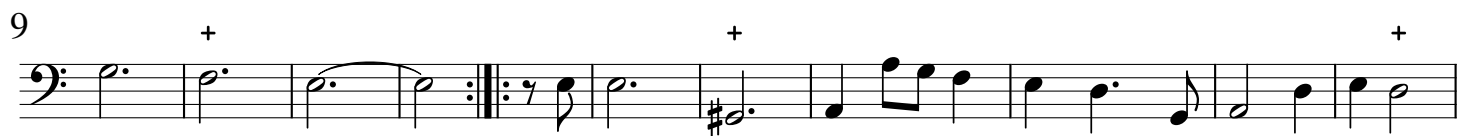
43

48

2. Gaillarde

7

3. Courante



4. Sarabande



5. Gavotte



6. Passacaille

Basse (Violoncello/ Violone)

Musical score for 6. Passacaille, Basse (Violoncello/ Violone). The piece is in 3/4 time and consists of 51 measures. The notation is in bass clef with a key signature of one sharp (F#). The score is divided into five systems, each starting with a measure number (13, 25, 39, 51). The first system contains measures 1-12. The second system contains measures 13-24. The third system contains measures 25-38. The fourth system contains measures 39-50. The fifth system contains measures 51-51, ending with a double bar line and repeat signs. There are two first endings (1. and 2.) starting at measure 51. The notation includes various note values, rests, and accidentals, with plus signs (+) above certain notes.

7. Bourrée

Musical score for 7. Bourrée, Basse (Violoncello/ Violone). The piece is in common time (C) and consists of 7 measures. The notation is in bass clef with a key signature of one sharp (F#). The score is divided into two systems. The first system contains measures 1-6. The second system contains measures 7-7, ending with a double bar line and repeat signs. The notation includes various note values, rests, and accidentals, with plus signs (+) above certain notes.

6. Menuet

Musical score for 6. Menuet, Basse (Violoncello/ Violone). The piece is in 3/4 time and consists of 13 measures. The notation is in bass clef with a key signature of one sharp (F#). The score is divided into two systems. The first system contains measures 1-12. The second system contains measures 13-13, ending with a double bar line and repeat signs. The notation includes various note values, rests, and accidentals, with plus signs (+) above certain notes.

9. Gigue

Musical score for 9. Gigue, Basse (Violoncello/ Violone). The piece is in 6/8 time and consists of 10 measures. The notation is in bass clef with a key signature of one sharp (F#). The score is divided into two systems. The first system contains measures 1-9. The second system contains measures 10-10, ending with a double bar line and repeat signs. The notation includes various note values, rests, and accidentals, with plus signs (+) above certain notes.