

Beischer-Matyó Tamás

Suite concertante

for cello and string orchestra

Violini II.

Violini II.

Suite concertante

for cello and string orchestra

I.

Moderato ♩ = 86

Beischer-Matyó Tamás

con sord.

ppp
con sord.

ppp

3

5

7

9 *senza sord.* *pp*

10 *senza sord.* *pp*

12

15 *pp* *pp* *pp* *pp* *pp*

18 *pp* *pp* *pp* *pp* *pp* *pp* *pp* *pp* *pp* *pp*

Violini II.

4

23 *pizz.* *p* *arco* *pp*

28

33

39

44

49

54

pp

61

f

66

p

70

molto staccato
f

73

76

poco a poco tenuti - - - - -

Violini II.

6

79

Two staves of music in 3/4 time. The upper staff begins with a rest, followed by a series of eighth notes with slurs and accents. The lower staff has a similar rhythmic pattern with slurs and accents.

83

Two staves of music in 3/4 time. The upper staff features a melodic line with slurs and accents, including a dynamic marking of *ff* (fortissimo) with a hairpin. The lower staff has a similar rhythmic pattern with slurs and accents, also marked *ff*.

87

Two staves of music in 3/4 time. The upper staff has a melodic line with slurs and accents, ending with a fermata. The lower staff has a similar rhythmic pattern with slurs and accents, also ending with a fermata.

92

One staff of music in 3/4 time. The melody consists of dotted half notes. A dynamic marking of *pp* (pianissimo) is present at the beginning.

98

One staff of music in 3/4 time. The melody consists of dotted half notes with various accidentals (sharps and flats).

105

One staff of music in 3/4 time. The melody consists of dotted half notes with various accidentals (flats and naturals).

Violini II.

7

110

ppp

ppp

112

114

116

119

pp

pp

124

rall.-----

ppp

II.

Vivace scherzando $\text{♩} = 84$

p *f* *tr*

p *f* *tr*

p *f* *tr*

p

p *2*

ff *p* *f* *tr*

ff *p* *f* *tr*

p *f* *tr* *2*

p *f* *tr* *2*

32 *p* *p* 2

38 *pp*

42

46 *ff* *p*

49 *f* *tr* *p* *f* *f* *p* *f*

54 *tr* *p*

59 2

Violini II.

10

65

p *ff*

70

ff *fff*

III.

Adagio molto e cantabile ♩ = 42

71

IV.

Presto scherzando ♩ = 144

26

f

32

ff *pp*

43 **2** **7**
pp

56 *f*

62 **6** *ff* *con sord.* *pp* *dolcissimo*
6 *con sord.* *pp* *dolcissimo*

73

79 **6** **6**

Detailed description: This page of a musical score for Violini II contains measures 43 through 86. The music is in a minor key, indicated by a single flat in the key signature. The score is written in a grand staff with two staves per system. Measure 43 begins with a treble clef and a key signature of one flat. It features a melodic line with eighth and sixteenth notes, followed by a sixteenth rest and a dotted quarter note. A dynamic marking of *pp* is present. Measures 44-45 contain sixteenth-note patterns. Measure 46 has a sixteenth rest and a dotted quarter note. Measures 47-48 continue with sixteenth-note patterns. Measure 49 has a sixteenth rest and a dotted quarter note. Measures 50-51 contain sixteenth-note patterns. Measure 52 has a sixteenth rest and a dotted quarter note. Measure 53 continues with sixteenth-note patterns. Measure 54 has a sixteenth rest and a dotted quarter note. Measure 55 continues with sixteenth-note patterns. Measure 56 begins with a dynamic marking of *f* and continues with sixteenth-note patterns. Measure 57 has a sixteenth rest and a dotted quarter note. Measure 58 continues with sixteenth-note patterns. Measure 59 has a sixteenth rest and a dotted quarter note. Measure 60 continues with sixteenth-note patterns. Measure 61 has a sixteenth rest and a dotted quarter note. Measure 62 begins with a dynamic marking of *ff* and continues with sixteenth-note patterns. Measure 63 has a sixteenth rest and a dotted quarter note. Measure 64 continues with sixteenth-note patterns. Measure 65 has a sixteenth rest and a dotted quarter note. Measure 66 continues with sixteenth-note patterns. Measure 67 has a sixteenth rest and a dotted quarter note. Measure 68 continues with sixteenth-note patterns. Measure 69 has a sixteenth rest and a dotted quarter note. Measure 70 continues with sixteenth-note patterns. Measure 71 has a sixteenth rest and a dotted quarter note. Measure 72 continues with sixteenth-note patterns. Measure 73 begins with a half note and a dotted half note, followed by a sixteenth rest and a dotted quarter note. Measure 74 continues with a half note and a dotted half note. Measure 75 has a sixteenth rest and a dotted quarter note. Measure 76 continues with a half note and a dotted half note. Measure 77 has a sixteenth rest and a dotted quarter note. Measure 78 continues with a half note and a dotted half note. Measure 79 begins with a dynamic marking of *pp* and a *dolcissimo* marking, followed by a sixteenth rest and a dotted quarter note. Measure 80 continues with a half note and a dotted half note. Measure 81 has a sixteenth rest and a dotted quarter note. Measure 82 continues with a half note and a dotted half note. Measure 83 has a sixteenth rest and a dotted quarter note. Measure 84 continues with a half note and a dotted half note. Measure 85 has a sixteenth rest and a dotted quarter note. Measure 86 continues with a half note and a dotted half note. A **6** is written above the staff in measure 85 and below the staff in measure 86. A *con sord.* marking is present above the staff in measure 62 and below the staff in measure 63.

Violini II.

12

91 *senza sord.*

f

97 *ff*

103 *pp*

109 *ff* *pp* *ff*

115 *pp* *ff* *p*

121 *f*

127 *ff*

133 *pppp*

142 *pppp*

Detailed description: This page of a musical score for Violini II contains measures 91 through 142. The music is written in a single system with two staves per measure. The key signature has one flat (B-flat), and the time signature is 2/4. The score begins at measure 91 with a dynamic of *f* and the instruction "senza sord.". It features a variety of rhythmic patterns, including eighth and sixteenth notes, and rests. Dynamics range from *pp* to *ff*. Articulation includes accents and slurs. A section starting at measure 133 features a four-measure rest in both staves, followed by a series of half notes with slurs, marked *pppp*. The score concludes at measure 142 with a final *pppp* dynamic.

148

5

157

ff

2

164

p *f*

170

f

176

ff *f*

181

f

185

ff

32

V.

Allegro moderato ♩ = 116

Musical score for Violini II, page 14, measures 1-31. The score is in treble clef with a key signature of two sharps (F# and C#). The tempo is Allegro moderato with a metronome marking of ♩ = 116. The score consists of seven staves of music.

Measures 1-6: *f* (forte). The music features a series of chords and eighth notes.

Measures 7-11: *f* (forte). The music continues with eighth notes and chords.

Measures 12-15: *ff* (fortissimo) followed by *p* (piano). The music features a series of eighth notes and a long note.

Measures 16-19: *ff* (fortissimo). The music features a series of eighth notes.

Measures 20-25: *p* (piano). The music features a series of eighth notes and a long note.

Measures 26-28: *f* (forte). The music features a series of eighth notes and a long note.

Measures 29-31: *ff* (fortissimo). The music features a series of eighth notes.

31 *trb*

35 *tr* *p*

40 *pp*

47

53

59 *ff*

64

68 *ff* *sul G*

73 *2*

Violini II.

16

76 *sul G*
ff

79 *ff*

82 *sfpp*

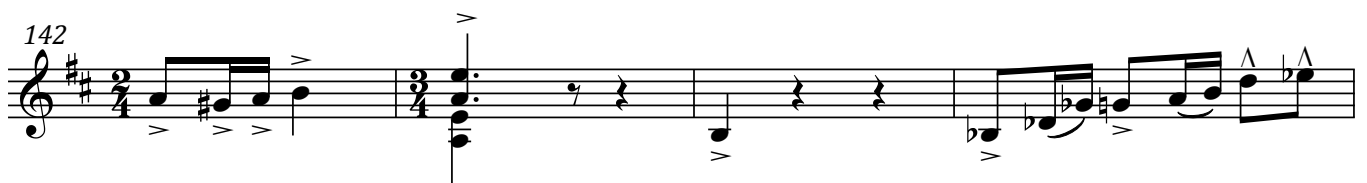
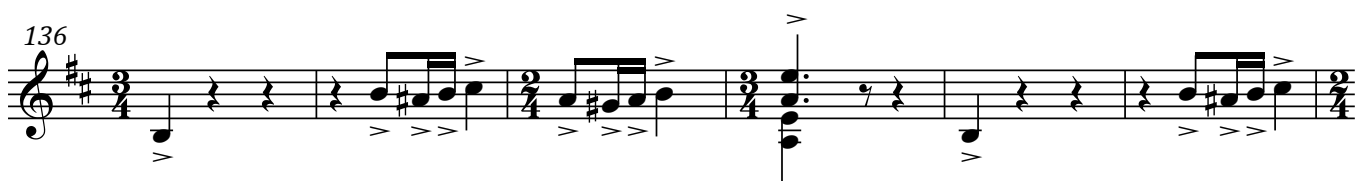
87 *sfpp*

93

99

105

111 *sul G*
p *f*



Violini II.

18

152

156 *p*

160

164

168

171

pp

pp

176

181

186

Detailed description: This page of a musical score for Violini II contains measures 152 through 186. The music is written in treble clef with a key signature of three sharps (F#, C#, G#) and a common time signature (C). Measures 152-171 consist of a single melodic line with a steady eighth-note rhythm. At measure 171, the music changes to a piano texture with two staves. The upper staff features a melodic line with eighth-note patterns, while the lower staff provides a harmonic accompaniment of chords. The dynamic marking *pp* (pianissimo) is indicated. At measure 176, the tempo and meter change to 3/4 time, and the music returns to a single melodic line with a more active eighth-note pattern. The score concludes at measure 186.

191

196

201

206

210 *rall.* ----- **Adagio** ♩ = 56

217 *a tempo* ♩ = 116

222