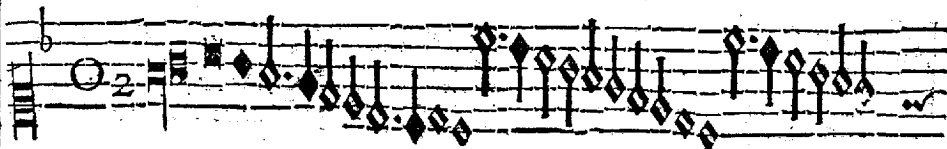
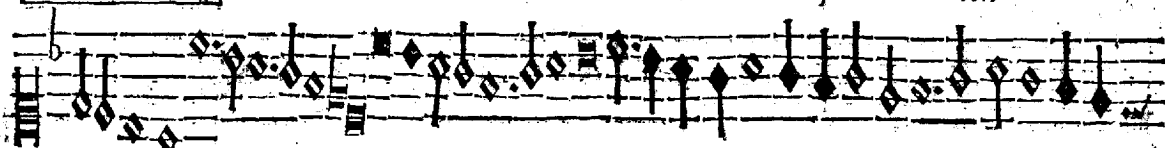


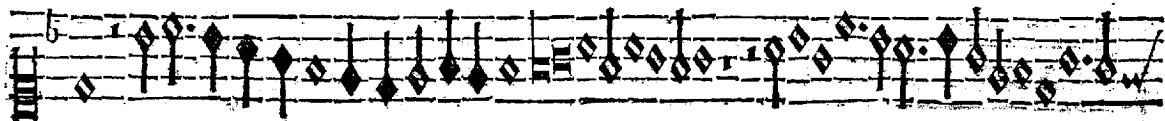
XXVI. Iosquin de Prees. Quinze uocum.



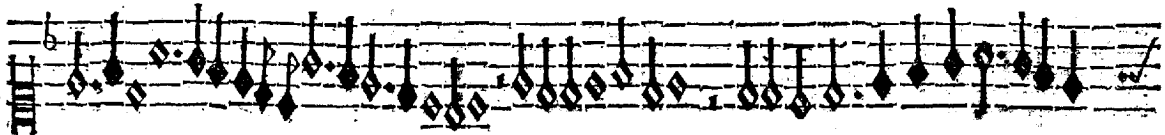
Ve ue rum ij cora



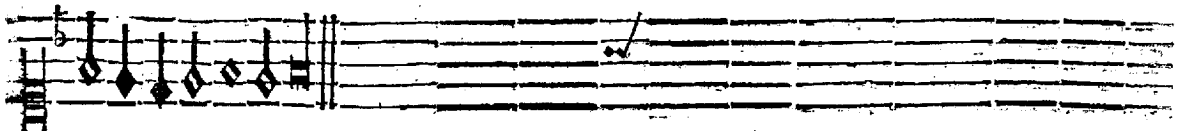
pus ij na tu: Ex Ma ni



a uir gi ne: Vere passum immo

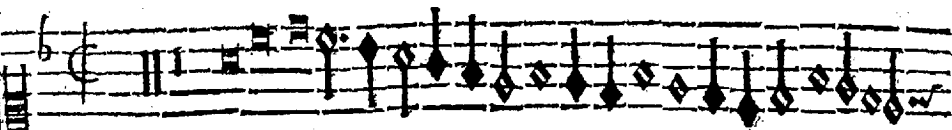


la tume In cruce pro homine in cruce pro ho



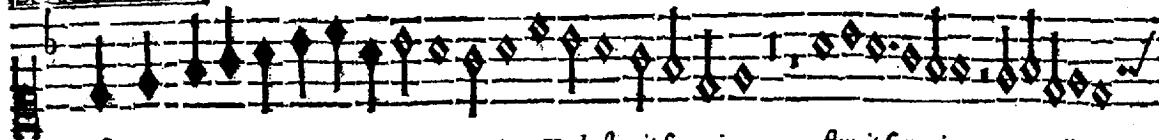
nime.

Secunda Pars.



Vius la

tus per-

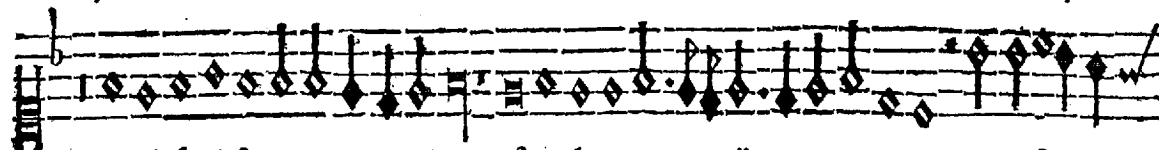


fo

ratur: Unda fluxit sanguine,

fluxit sanguine

ij

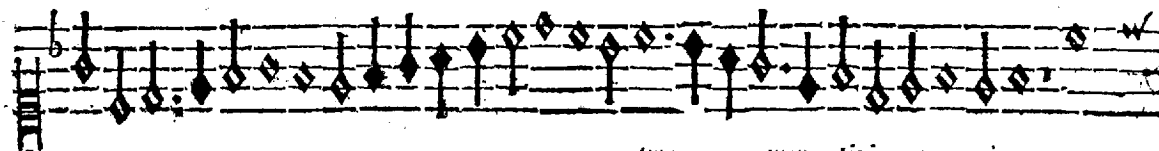


Unda fluxit san

guine: Esto nobis

ij

pregustas



tum

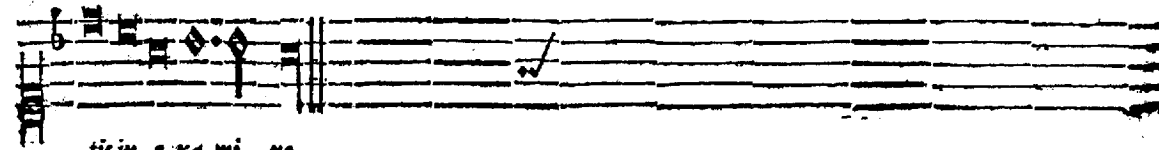
mor

tis in

ex a

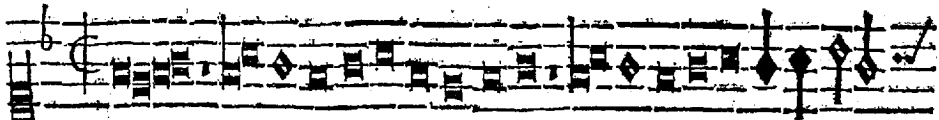
mi ne:

mor-

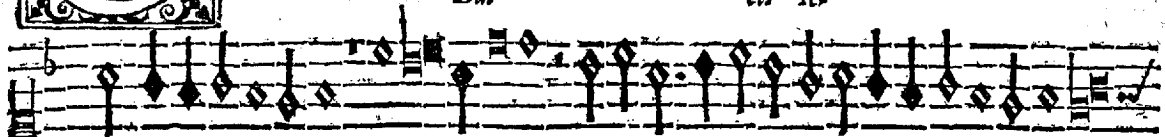


tic in e xa mi ne.

Tertia Pars.



Dul *eis* *Is*



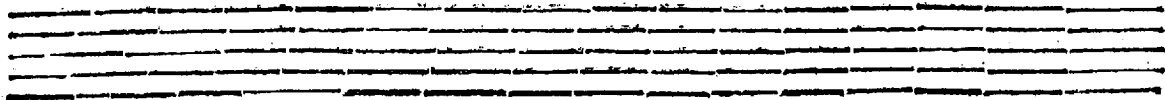
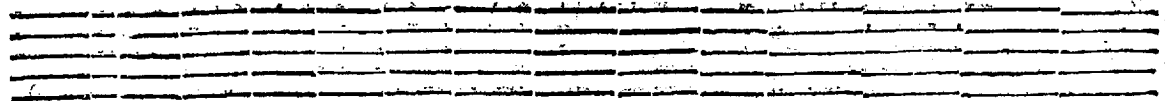
su *fili* *Marie*



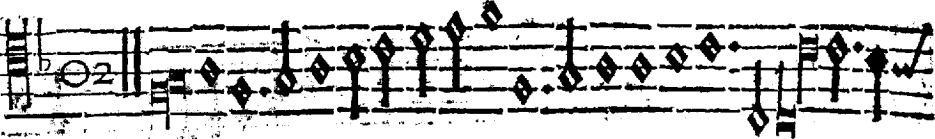
y

A

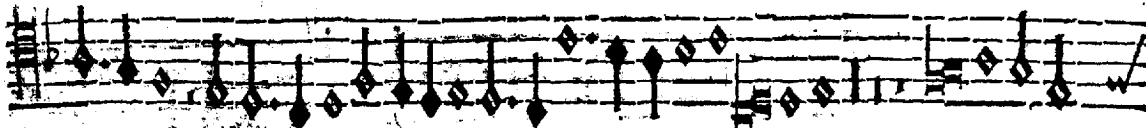
mem.



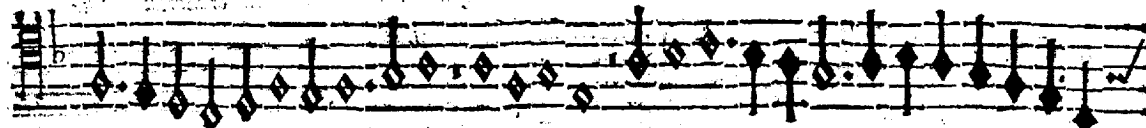
XXVI. Iosquin de pres. Quinze vocem.



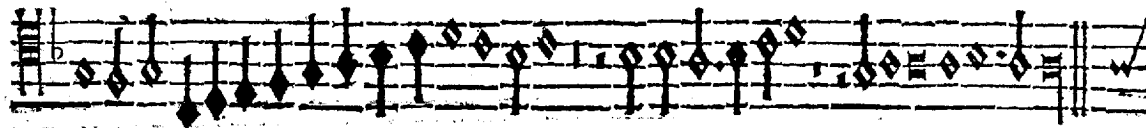
Ve ue rum cor pus nae



tum: Ex Ma ria uir gine: Ve re

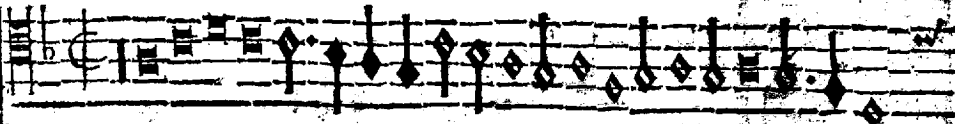


paſ sum immolatum: In cruce

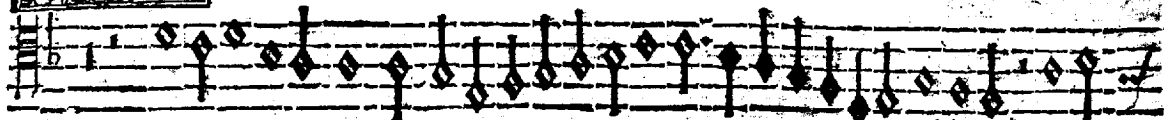


ce pro ho mine in cruce sc in cruce pro homine.

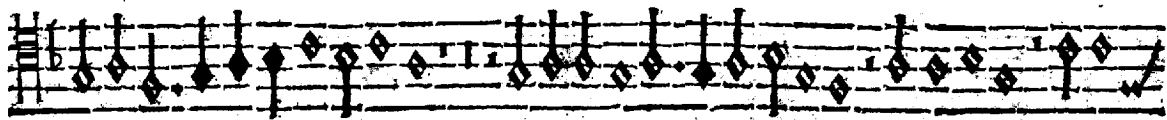
Secunda pars.



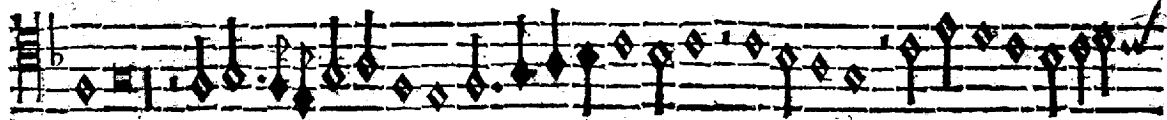
Vius latus per fora, tum ij



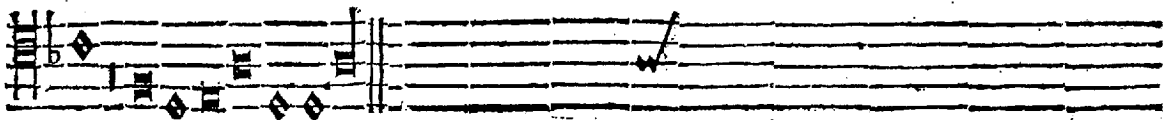
Vnda fluxit unda fluxit sana



guine: ij Esto nobis



ij progustatum: mortis in exa mi:



ne mortis in exa mine,

Tertia pars.



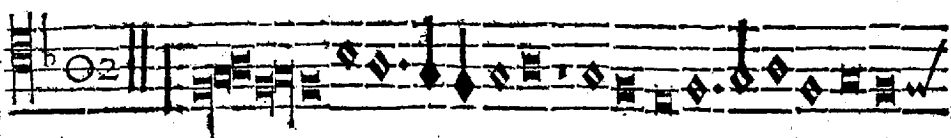
Musical staff with lyrics: *Du* *cis* *Iesu* *ij* *fi*

Musical staff with lyrics: *li Ma* *ria* *fili* *Ma* *ri*

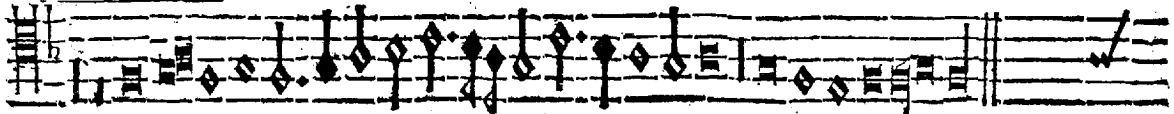
Musical staff with lyrics: *ij* *Mari* *a* *fi* *li* *Mari* *a*

Musical staff with lyrics: *A* *men.*

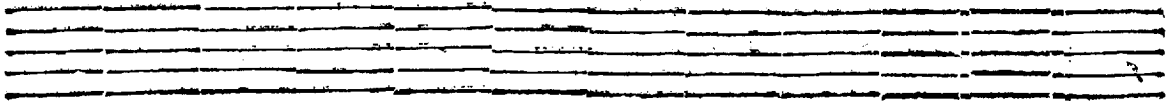
XXVI. Iosquin de Pres. Quinq; uocum.
Altera tox in Epidiapente post tria Tempora.



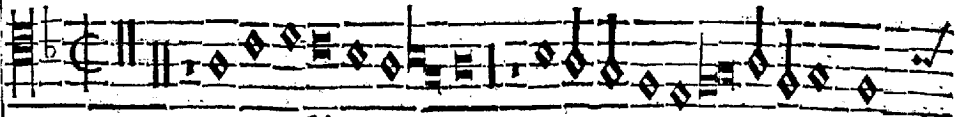
Ve uerum cor pus natum: Ex Mari a uirgi ne:



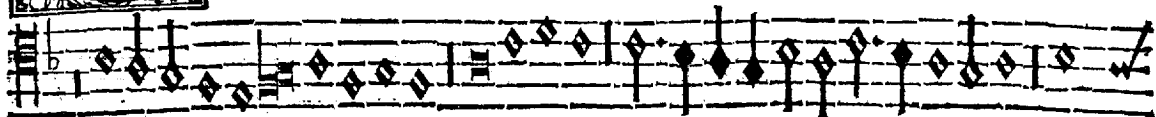
Ve re passum im mola tum: In cruce pro homine.



Secunda pars.
Altera uox in Epidiapente post duo Tempora.



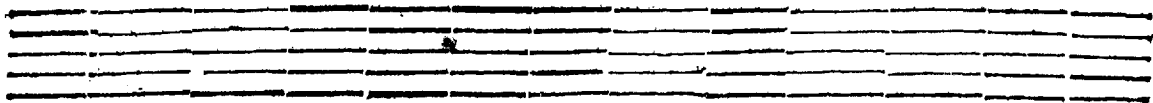
Vius latus perfora tum perfo ra tum Vn da flu xit



ij san guine: E stono bis prægustatum mora

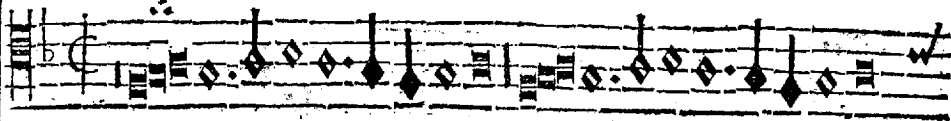


et in exa mine ij mortis in exa mine.

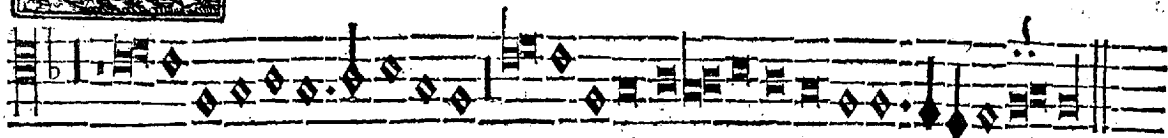


Tertia Pars.

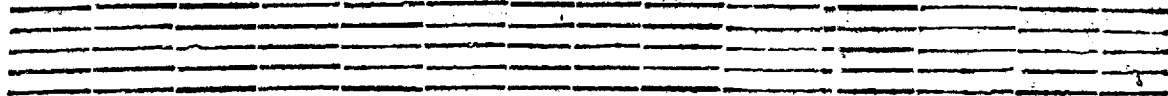
Altera uox in Epi diapente post unum Tempus.



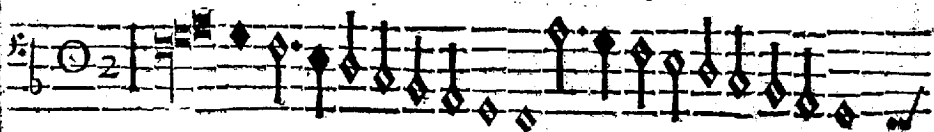
Dulcis o pi e



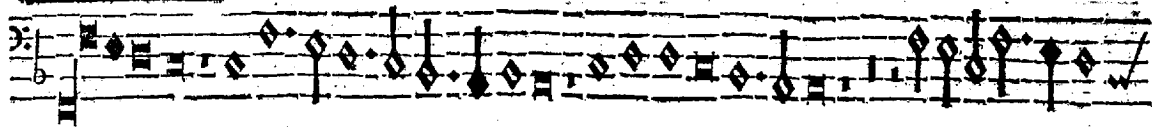
Ie su fili Ma ria ij A men.



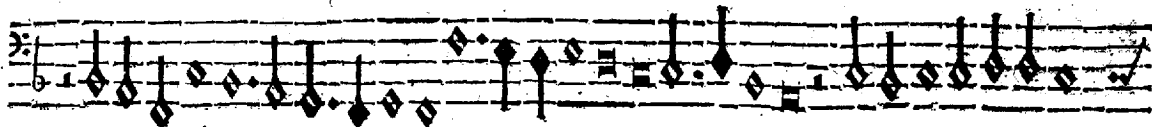
XXVI. Josquin de Prefs. Quinçz uocum.



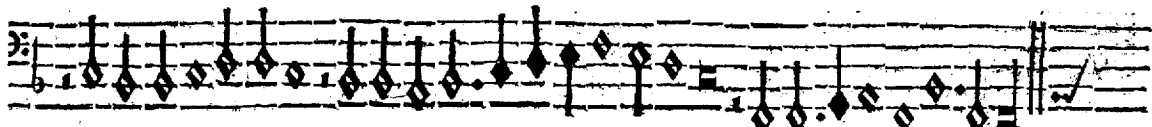
Ve ue rum corpus na.



tum: Ex Maria uir gine ij Vere passum.

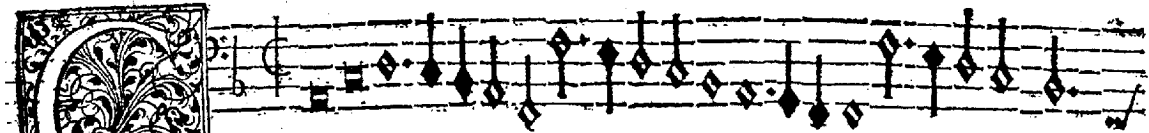


ij Vere passum. immo. latum: In cruce pro. homine



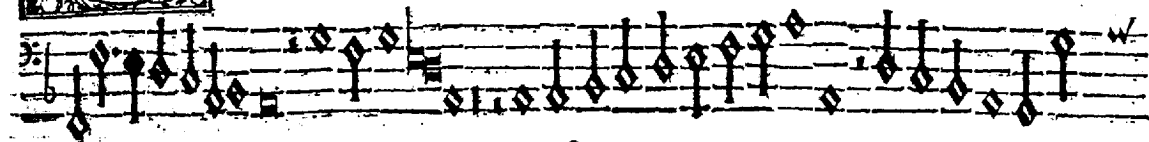
ij ij in cru ce pro homine.

Secunda Pars.



V ius la

tus per fos ra

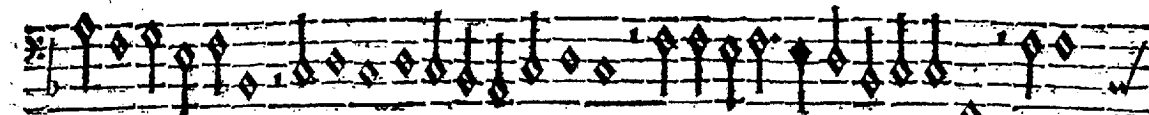


tam

ij

Vnda flu

xit sane



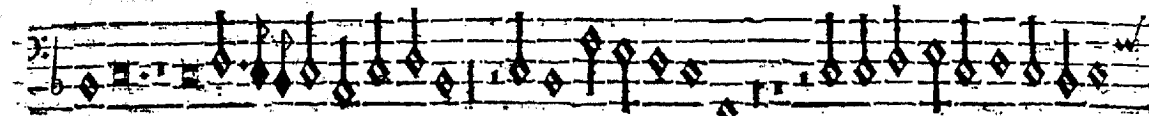
guine

ij

Vnda fluxit

sanguine:

Esto



nobis

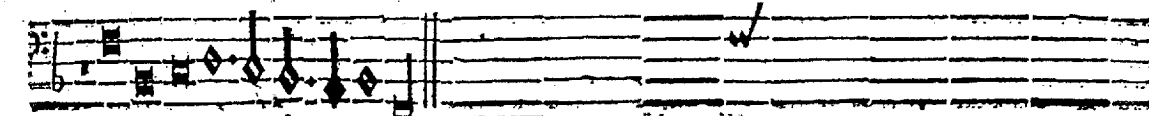
pragu

statum

mortis in exami

ne

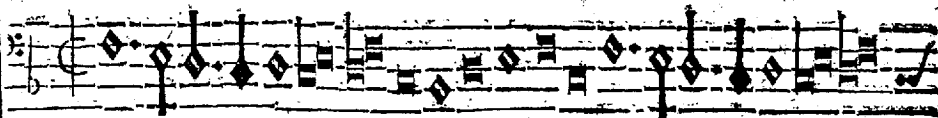
ij



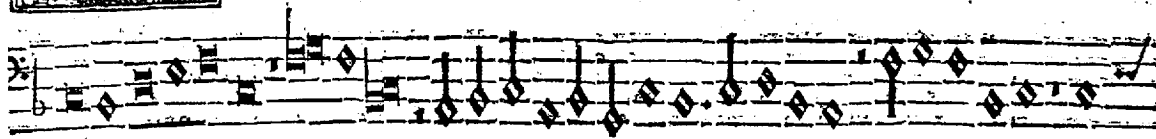
mortis in exa

mine

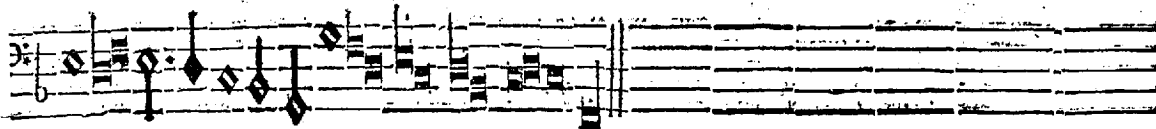
Tertia pars.



Dul cis Ie su ij ij



O dul cis O dulcis Ie su fili Ma rie



ij A men.

