

Basso

Concerto Con *Wae* Trombe, Da Caccia

Del Sig:

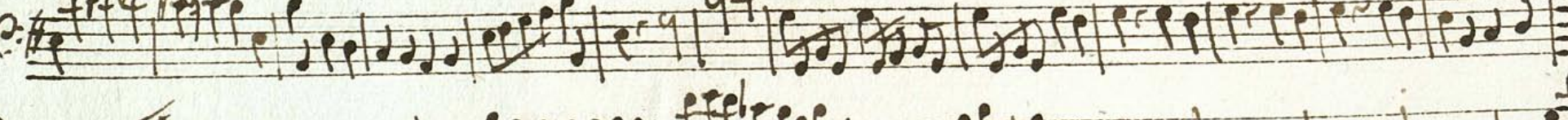
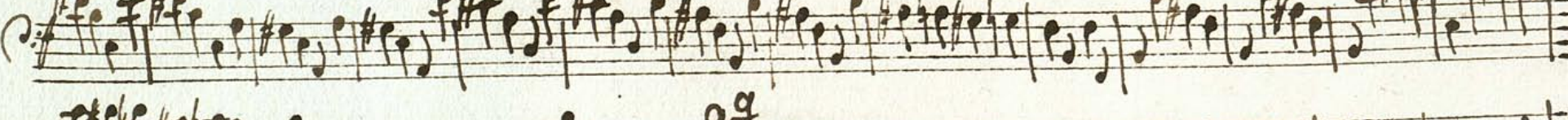
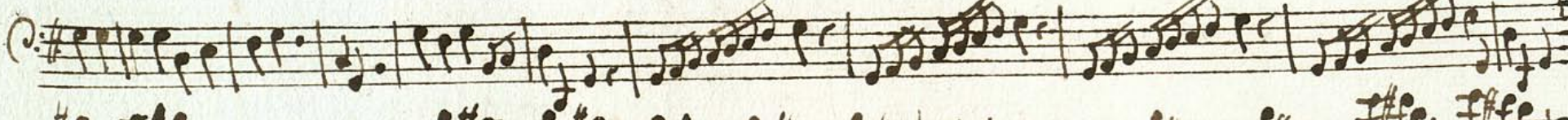
Giuseppe Valentini,



Largo $\text{C}\sharp$ $\frac{3}{4}$



Allegro $\text{C}\sharp$ $\frac{2}{4}$



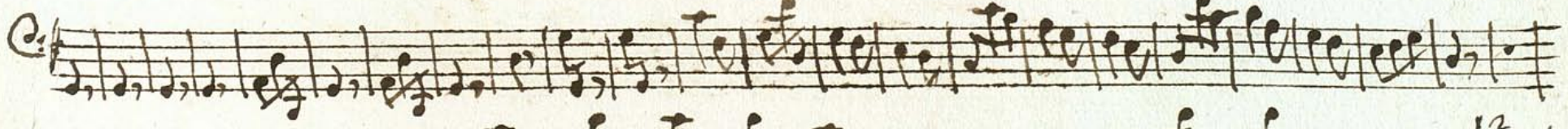
Comodo: 

 17

Spiritoso: 

 35

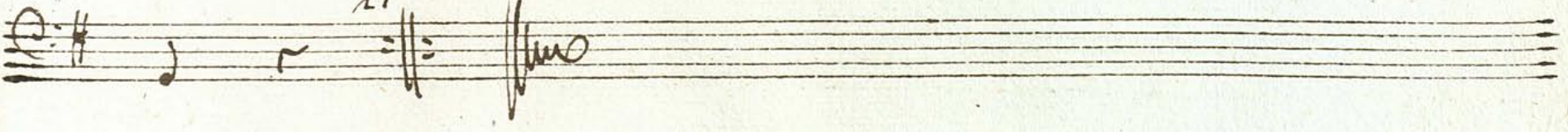




 12

Allegro: 



 21

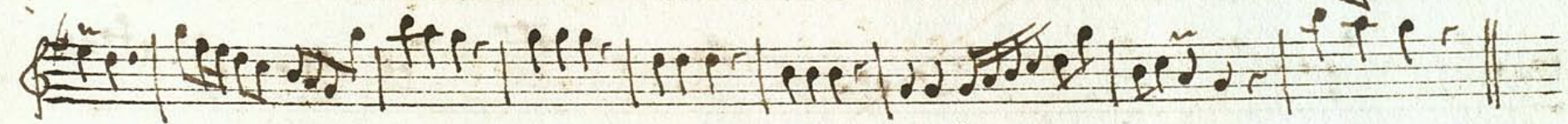
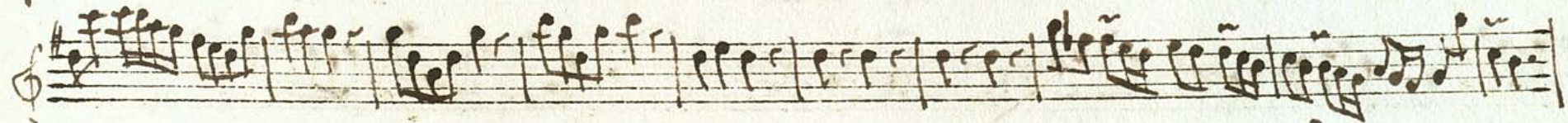
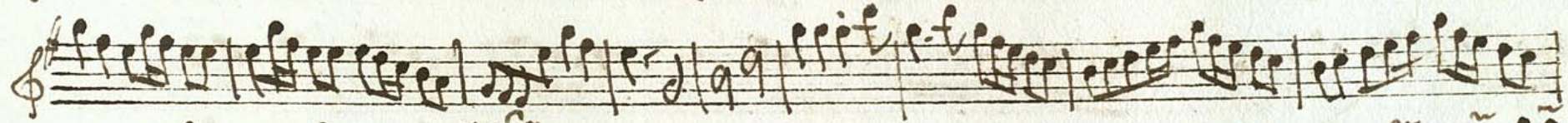


Violino Primo

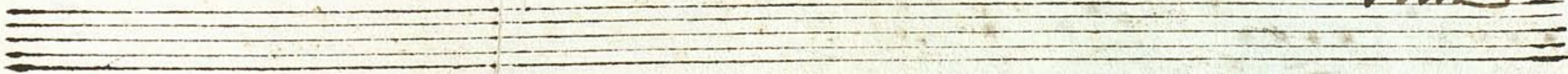


Largo $\#$ $\frac{3}{4}$

alle. C



Volvi



Spiritoso

Allegro

Violino 2:



Largo

$\frac{3}{4}$

Handwritten musical score for the first system, consisting of five staves of music. The key signature is G major (one sharp) and the time signature is 3/4. The notation includes various rhythmic values, slurs, and dynamic markings.

Allegro

$\frac{C}{4}$

Handwritten musical score for the second system, consisting of five staves of music. The key signature is G major (one sharp) and the time signature is common time (C). The notation includes various rhythmic values, slurs, and dynamic markings.

A handwritten musical score consisting of ten staves. The notation is in a single system, likely for a single melodic line. The key signature is one sharp (F#), and the time signature is 9/8. The score begins with a treble clef and a key signature of one sharp. The first staff contains a series of eighth and sixteenth notes. The second staff features a dense texture of sixteenth notes. The third and fourth staves continue with similar rhythmic patterns. The fifth staff shows a change in rhythm with some quarter notes. The sixth staff has a '9' written above it, indicating a measure rest. The seventh staff contains a '9' above it and a double bar line. The eighth staff begins with the tempo marking 'Comodo' and a common time signature 'C'. The ninth and tenth staves conclude the piece with a final cadence and the word 'Vlti' written in a cursive hand at the end of the final staff.

Spiritoso

Handwritten musical score for a piece titled "Spiritoso". The score consists of ten staves of music. The first staff is in treble clef with a key signature of one sharp (F#) and a 3/8 time signature. The music is written in a cursive, handwritten style. The second staff continues the melody. The third staff features a double bar line with repeat dots. The fourth staff continues the piece. The fifth staff has a fermata over a note. The sixth staff continues the melody. The seventh staff has a fermata over a note. The eighth staff is marked "Allegro" and has a 2/4 time signature. The ninth staff continues the piece. The tenth staff ends with a double bar line and repeat dots. A circular library stamp is visible in the bottom right corner of the page.



136.
Corno Primo

Largo 3/4 \#

Allegro C \#

Volta

And.^{te}

Handwritten musical notation on a single staff. It begins with a treble clef, a key signature of one sharp (F#), and a common time signature (C). A measure rest is marked with a '6' above it. The notation includes eighth and sixteenth notes, some beamed together, and a repeat sign.

Handwritten musical notation on a single staff. It begins with a treble clef, a key signature of one sharp (F#), and a 3/8 time signature. A measure rest is marked with a '22' above it. The notation includes quarter notes, eighth notes, and sixteenth notes, with some beaming and a repeat sign.

Handwritten musical notation on a single staff. It begins with a treble clef, a key signature of one sharp (F#), and a common time signature (C). A measure rest is marked with a '7' above it. The notation includes quarter notes, eighth notes, and sixteenth notes, with some beaming and a repeat sign.

Handwritten musical notation on a single staff. It begins with a treble clef, a key signature of one sharp (F#), and a common time signature (C). A measure rest is marked with a '15' above it. The notation includes quarter notes, eighth notes, and sixteenth notes, with some beaming and a repeat sign.

Handwritten musical notation on a single staff. It begins with a treble clef, a key signature of one sharp (F#), and a common time signature (C). The notation includes quarter notes, eighth notes, and sixteenth notes, with some beaming and a repeat sign.

Handwritten musical notation on a single staff. It begins with a treble clef, a key signature of one sharp (F#), and a common time signature (C). A measure rest is marked with an '8' above it. The notation includes quarter notes, eighth notes, and sixteenth notes, with some beaming and a repeat sign.

Handwritten musical notation on a single staff. It begins with a treble clef, a key signature of one sharp (F#), and a common time signature (C). A measure rest is marked with a '2' above it. The notation includes quarter notes, eighth notes, and sixteenth notes, with some beaming and a repeat sign.

Handwritten musical notation on a single staff. It begins with a treble clef, a key signature of one sharp (F#), and a 2/4 time signature. A measure rest is marked with a '4' above it. The notation includes quarter notes and eighth notes, with a repeat sign.

Handwritten musical notation on a single staff. It begins with a treble clef, a key signature of one sharp (F#), and a 2/4 time signature. A measure rest is marked with a '2' above it. The notation includes quarter notes and eighth notes, with a repeat sign.



-136.
Corno 2: in G

Largo $\frac{3}{4}$

Alte: $\frac{3}{4}$

Vola

Andte

