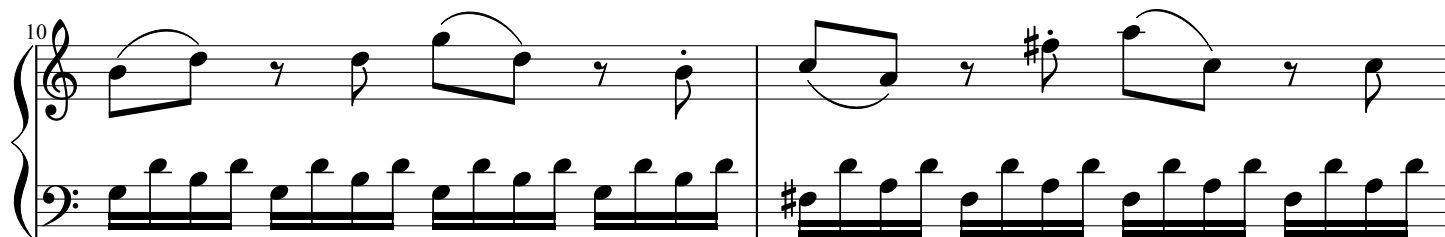
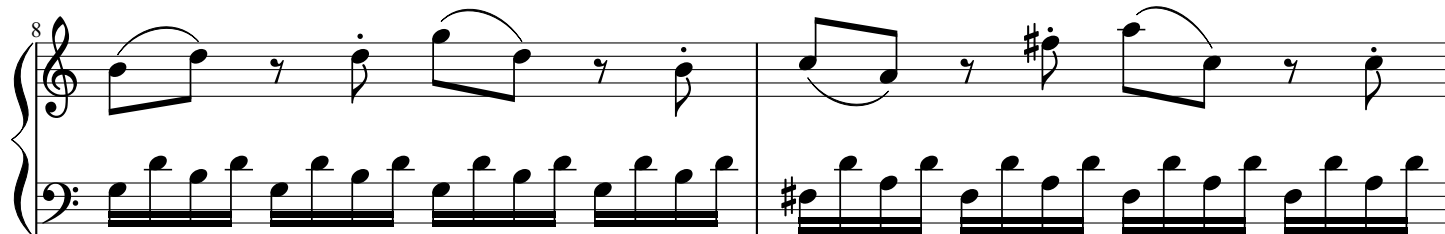
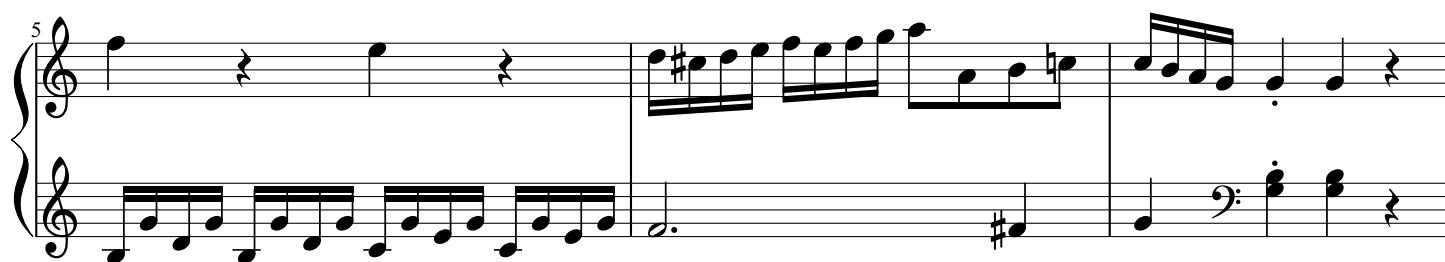
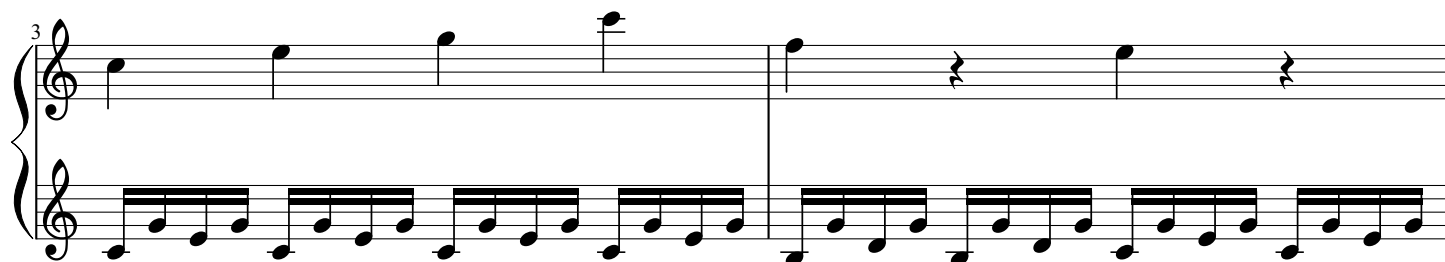


Franz Joseph Haydn

(HOB XVI : 1)

Allegro



12

15

18

20

22

The musical score for Example 6-10, measures 31-34, consists of two staves. The upper staff is in treble clef and contains a melodic line with eighth-note runs, slurs, and ties. The lower staff is in bass clef and provides harmonic support with chords and single notes. A key signature change to one sharp (F#) occurs at measure 33.

33

34

35

37

39

41

45

48

Measures 48-49. Treble clef: G4 (sharp). Bass clef: continuous eighth-note pattern (F3, G3, A3, B3, C4, D4, E4, F4).

50

(#)

Measures 50-51. Treble clef: G4 (sharp). Bass clef: continuous eighth-note pattern (F3, G3, A3, B3, C4, D4, E4, F4).

52

f *p*

Measures 52-53. Treble clef: G4 (fermata). Bass clef: continuous eighth-note pattern (F3, G3, A3, B3, C4, D4, E4, F4). Dynamics: *f* (measure 52), *p* (measure 53).

54

f

Measures 54-55. Treble clef: G4 (sharp), F4. Bass clef: F3 (sharp), G3. Dynamics: *f* (measure 54).

56

Measures 56-57. Treble clef: G4 (slur), F4. Bass clef: continuous eighth-note pattern (F3, G3, A3, B3, C4, D4, E4, F4).

58

Measures 58-59. The right hand features a melody with eighth notes and rests, while the left hand plays a steady eighth-note accompaniment.

60

Measures 60-62. Measure 60 has a complex right-hand passage with many beamed sixteenth notes. Measures 61-62 show a more active right hand and a left hand with chords and eighth notes.

63

Measures 63-64. The right hand has a rhythmic pattern of eighth notes and sixteenth notes, while the left hand plays a simple eighth-note accompaniment.

65

Measures 65-67. Measures 65-66 feature a complex right-hand passage with many beamed sixteenth notes. Measure 67 shows a right hand with chords and a left hand with eighth notes.